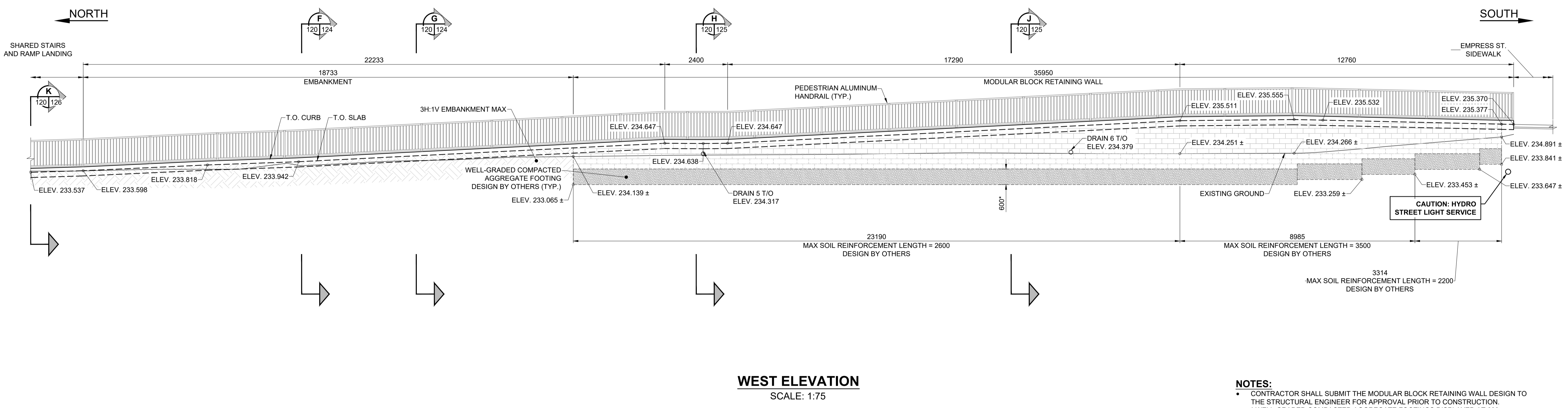
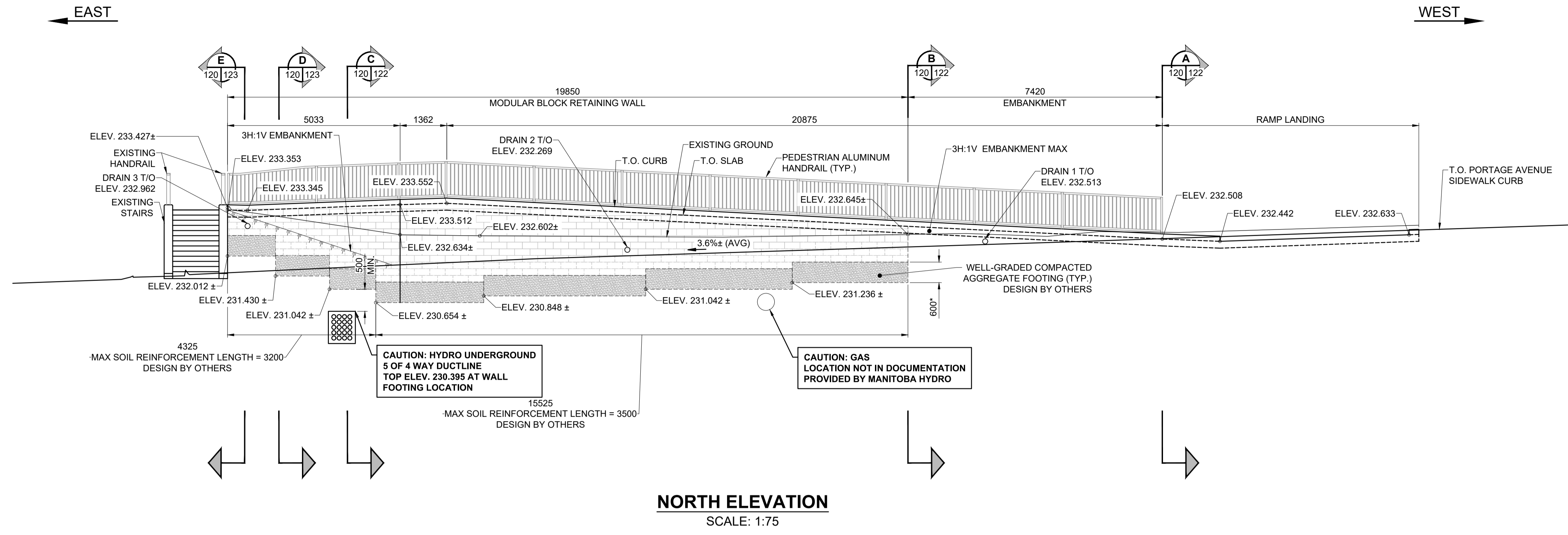


ISO A1 - 594mm x 841mm
 O:\winipeg\proj\160034\Design\1\Drawings\06 Sheets\Detailed Design\Structural\W160034-DD-SR-ELEVATIONS.dwg - Last Saved: 9/6/2018 5:08 PM by ALP
 Printed: 9/6/2018 9:27 PM by Alex Heppner



- NOTES:**
- CONTRACTOR SHALL SUBMIT THE MODULAR BLOCK RETAINING WALL DESIGN TO THE STRUCTURAL ENGINEER FOR APPROVAL PRIOR TO CONSTRUCTION.
 - * WELL-GRADED COMPACTED AGGREGATE FOOTINGS DISPLAYED AT 600 ASSUMED DEPTH. DESIGN FOR ALL MODULAR BLOCK RETAINING WALL FOOTINGS BY MODULAR BLOCK RETAINING WALL SUPPLIER. ANY CHANGES TO THE ASSUMED DIMENSIONS MUST BE APPROVED BY ALL PARTIES PRIOR TO CONSTRUCTION.
 - TOP OF RAMP SLAB ELEVATIONS LOCATED AT NEAREST GUTTER.
 - SHEAR KEYS NOT SHOWN IN ELEVATIONS VIEWS FOR CLARITY.



METRIC
WHOLE NUMBERS INDICATE MILLIMETRES
DECIMALIZED NUMBERS INDICATE METRES

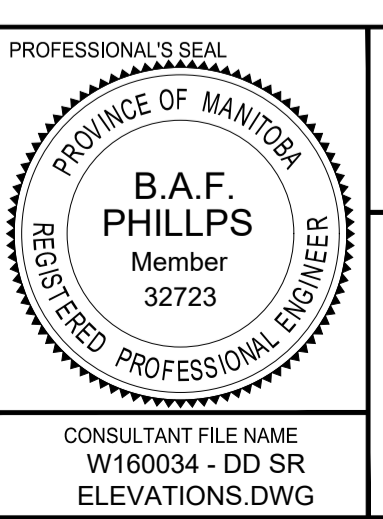
LOCATION APPROVED
UNDERGROUND STRUCTURES

DATE: _____

NOTE:
LOCATION OF UNDERGROUND STRUCTURES AS SHOWN ARE BASED ON THE BEST INFORMATION AVAILABLE BUT NO GUARANTEE IS GIVEN THAT ALL EXISTING UTILITIES ARE SHOWN OR THAT THE GIVEN LOCATIONS ARE EXACT. CONFIRMATION OF EXISTENCE AND EXACT LOCATION OF ALL SERVICES MUST BE OBTAINED FROM THE INDIVIDUAL UTILITIES BEFORE PROCEEDING WITH CONSTRUCTION.

NO.	REVISIONS	DATE	BY
C	ISSUED FOR TENDER	18/09/04	BAP
B	ISSUED FOR 95% DESIGN REVIEW	18/08/07	BAP
A	ISSUED FOR 50% DESIGN REVIEW	18/06/28	BAP

MORRISON HERSHFIELD	
DESIGNED BY: YM	CHECKED BY: BAP
DRAWN BY: ALP	APPROVED BY: BE
HOR SCALE: AS SHOWN	RELEASED FOR CONSTRUCTION
VERT SCALE: AS SHOWN	N/A



THE CITY OF WINNIPEG
PUBLIC WORKS DEPARTMENT
ENGINEERING DIVISION

EMPRESS STREET PROJECT
PEDESTRIAN ACCESSIBILITY RAMPS
SOUTH RAMP
ELEVATIONS

CITY DRAWING NUMBER: P-3494-121
SHEET 121 OF 168
DRAWING No. 121 REV C

BID OPPORTUNITY No. 602-2018