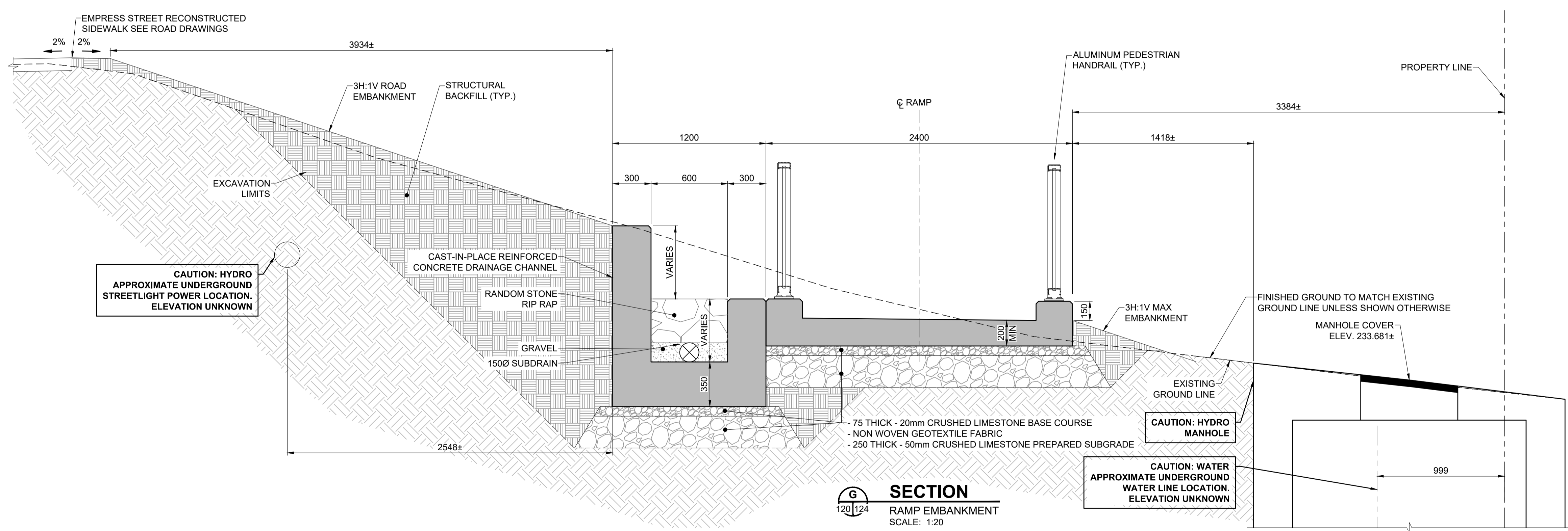


F
SECTION
RAMP EMBANKMENT & CHANNEL END
SCALE: 1:20



G
SECTION
RAMP EMBANKMENT
SCALE: 1:20

- NOTES:**
- * WALL BATTER ASSUMED AT A MAX OF 6 DEGREES. DESIGN OF WALL BY MODULAR BLOCK RETAINING WALL SUPPLIER.
 - ** WELL GRADED COMPACTED AGGREGATE FOOTINGS DISPLAYED AT ASSUMED 600 BY 1200 DIMENSIONS. DESIGN OF FOOTING BY MODULAR BLOCK RETAINING WALL SUPPLIER.
 - FOR TYPICAL SLAB CROSS SECTION DIMENSIONS SEE SHEET 120.
 - ALL EXPOSED CONCRETE CORNERS TO HAVE A 20mm CHAMFER UNLESS NOTED OTHERWISE.



METRIC
WHOLE NUMBERS INDICATE MILLIMETRES
DECIMALIZED NUMBERS INDICATE METRES

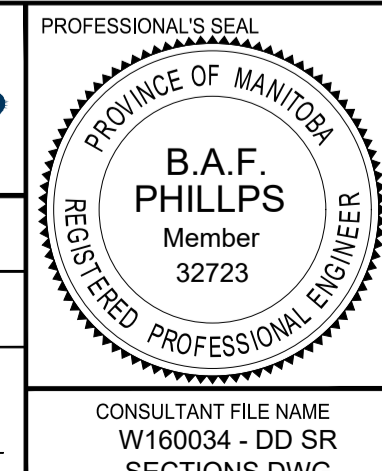
LOCATION APPROVED UNDERGROUND STRUCTURES

NO.	REVISIONS	DATE	BY
C	ISSUED FOR TENDER	18/09/04	BAP
B	ISSUED FOR 95% DESIGN REVIEW	18/08/07	BAP
A	ISSUED FOR 50% DESIGN REVIEW	18/06/28	BAP

BM	ELEV

MORRISON HERSHFIELD

DESIGNED BY	YM	CHECKED BY	BAP
DRAWN BY	ALP	APPROVED BY	BE
HOR SCALE	AS SHOWN	RELEASED FOR CONSTRUCTION	N/A
VERT SCALE	AS SHOWN	DATE	



THE CITY OF WINNIPEG PUBLIC WORKS DEPARTMENT ENGINEERING DIVISION

EMPRESS STREET PROJECT PEDESTRIAN ACCESSIBILITY RAMPS SOUTH RAMP CROSS SECTIONS 3

CITY DRAWING NUMBER	P-3494-124
SHEET	124 OF 168
DRAWING No.	124
REV	C