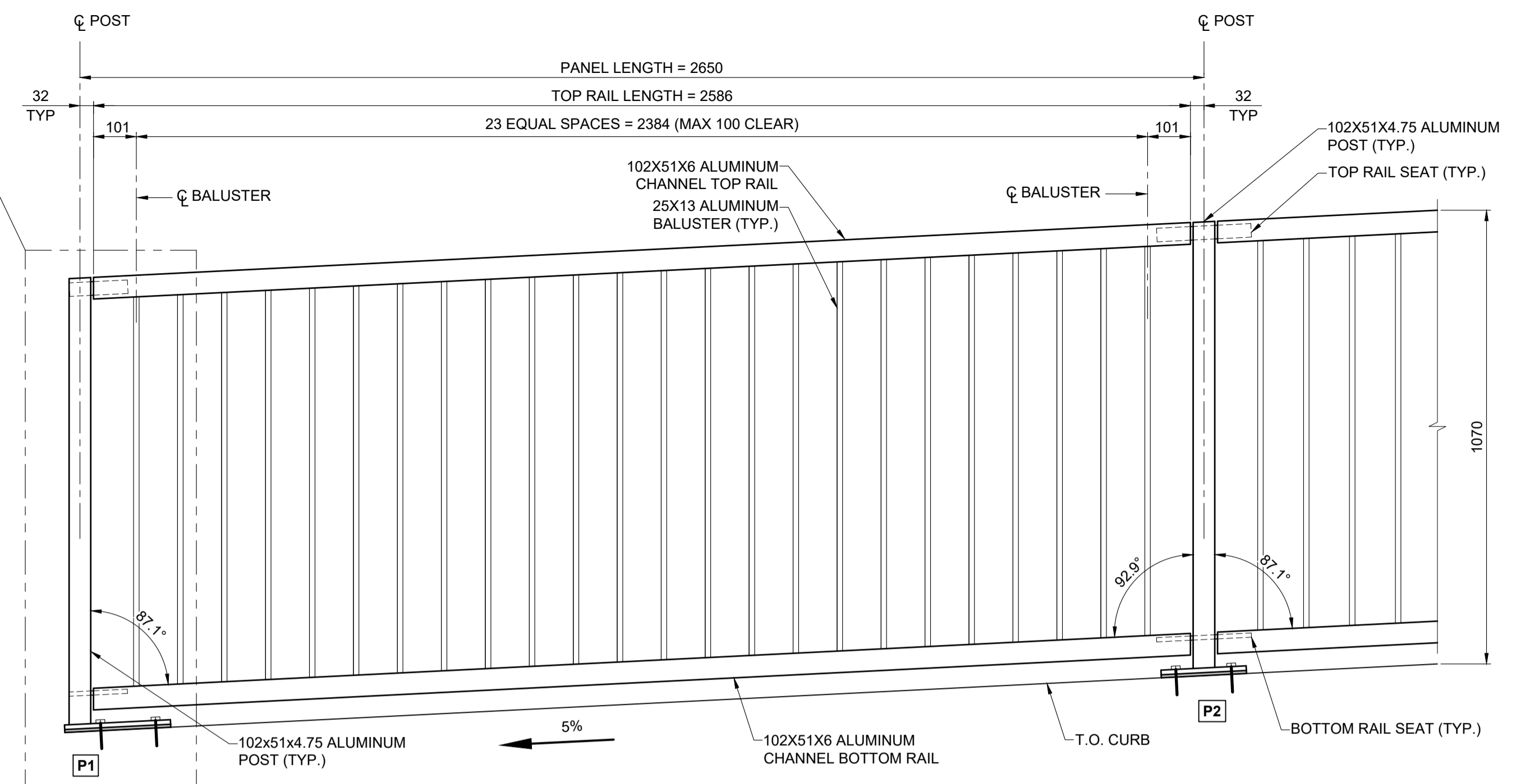


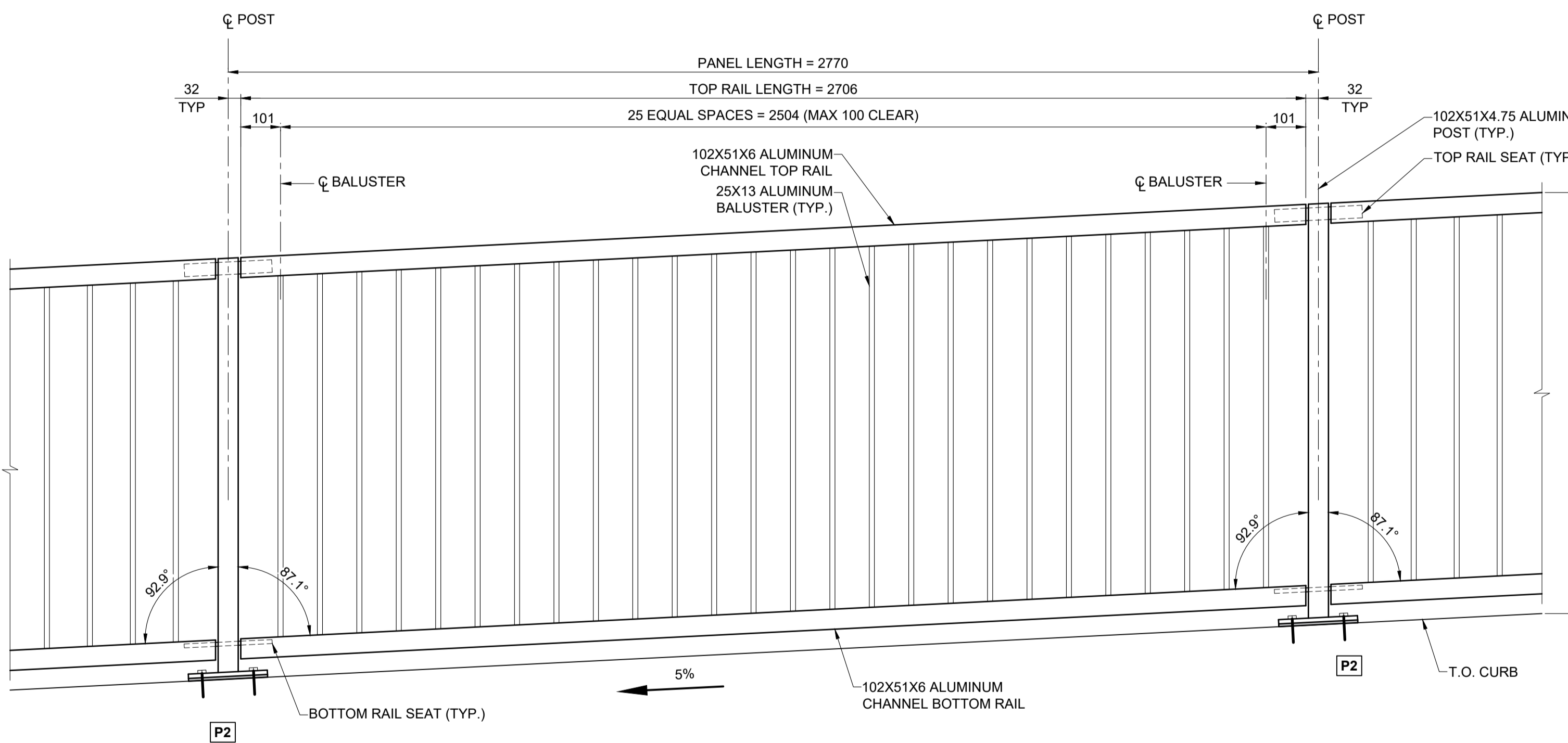
INTERMEDIATE PANEL Mk. A ELEVATION

SCALE: 1:10



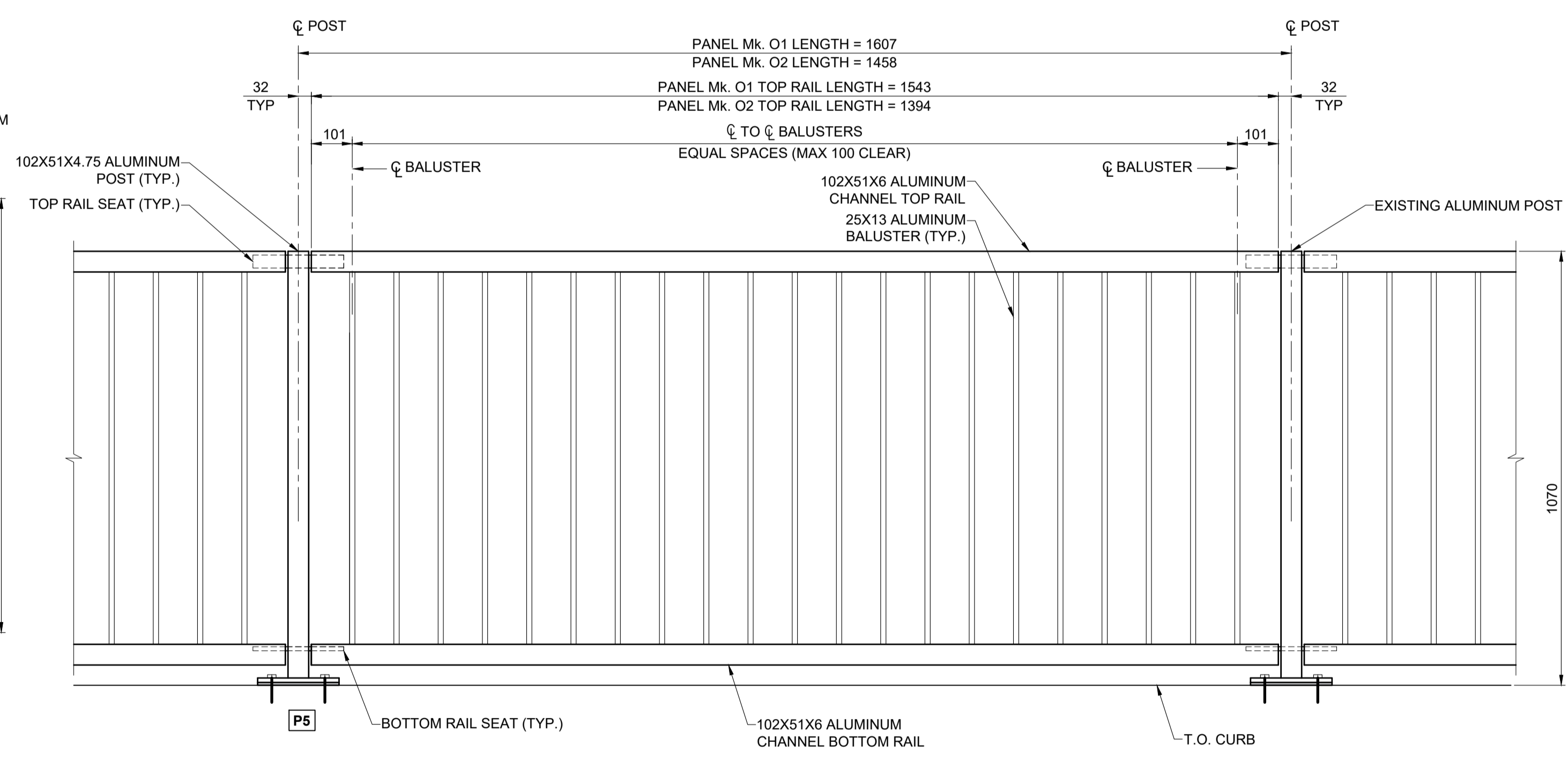
END PANEL Mk. A ELEVATION

SCALE: 1:10



INTERMEDIATE PANEL Mk. B ELEVATION

SCALE: 1:10



PANELS Mk. O1 & O2 ELEVATION

SCALE: 1:10

- NOTES:**
1. ALUMINUM EXTRUSIONS SHALL CONFORM TO ASTM B221 ALLOY 6351-T6.
 2. ALUMINUM PLATES SHALL CONFORM TO ASTM B221 ALLOY 5083.
 3. THE M.I.G. PROCESS OF WELDING SHALL BE USED.
 4. RAIL POSTS AND BALUSTERS SHALL BE SET PLUMB.
 5. PLACE NEOPRENE PAD UNDER EACH POST BETWEEN BASE PLATE OR SHIM AND CONCRETE SURFACE. ALUMINUM SHIMS MAY BE REQUIRED FOR VERTICAL ALIGNMENT.
 6. HANDRAIL ANCHOR INSERTS SHALL BE ACROW-RICHMOND TYPE DGRS-1.



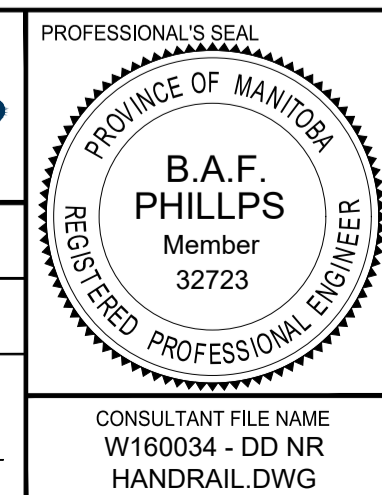
METRIC
WHOLE NUMBERS INDICATE MILLIMETRES
DECIMALIZED NUMBERS INDICATE METRES

LOCATION APPROVED
UNDERGROUND STRUCTURES

NOTE:
LOCATION OF UNDERGROUND STRUCTURES AS SHOWN ARE BASED ON THE BEST INFORMATION AVAILABLE BUT NO GUARANTEE IS GIVEN THAT ALL EXISTING UTILITIES ARE SHOWN OR THAT THE GIVEN LOCATIONS ARE EXACT. CONFIRMATION OF EXISTENCE AND EXACT LOCATION OF ALL SERVICES MUST BE OBTAINED FROM THE INDIVIDUAL UTILITIES BEFORE PROCEEDING WITH CONSTRUCTION.

No.	REVISIONS	DATE	BY
B	ISSUED FOR TENDER	18/09/04	BAP
A	ISSUED FOR 95% DESIGN REVIEW	18/08/07	BAP

DESIGNED BY ALP		CHECKED BY BAP	
DRAWN BY ALP		APPROVED BY BE	
HOR SCALE AS SHOWN		RELEASED FOR CONSTRUCTION	
VERT SCALE AS SHOWN		N/A	
DATE		DATE	



THE CITY OF WINNIPEG
PUBLIC WORKS DEPARTMENT
ENGINEERING DIVISION

EMPRESS STREET PROJECT
PEDESTRIAN ACCESSIBILITY RAMPS
NORTH RAMP
PEDESTRIAN HANDRAIL DETAILS 2

CITY DRAWING NUMBER: P-3494-156
SHEET 156 OF 168
DRAWING No. 156 REV B

BID OPPORTUNITY No. 602-2018