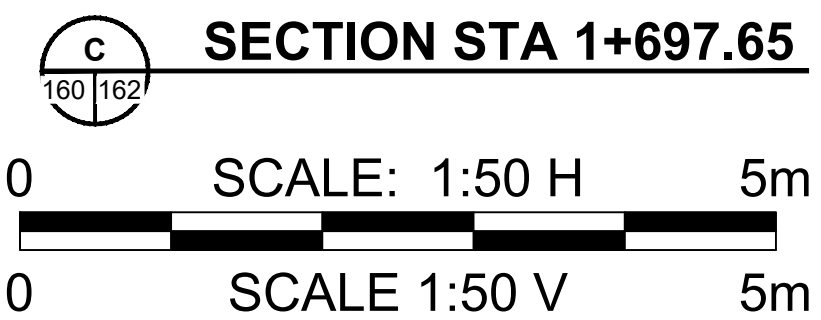
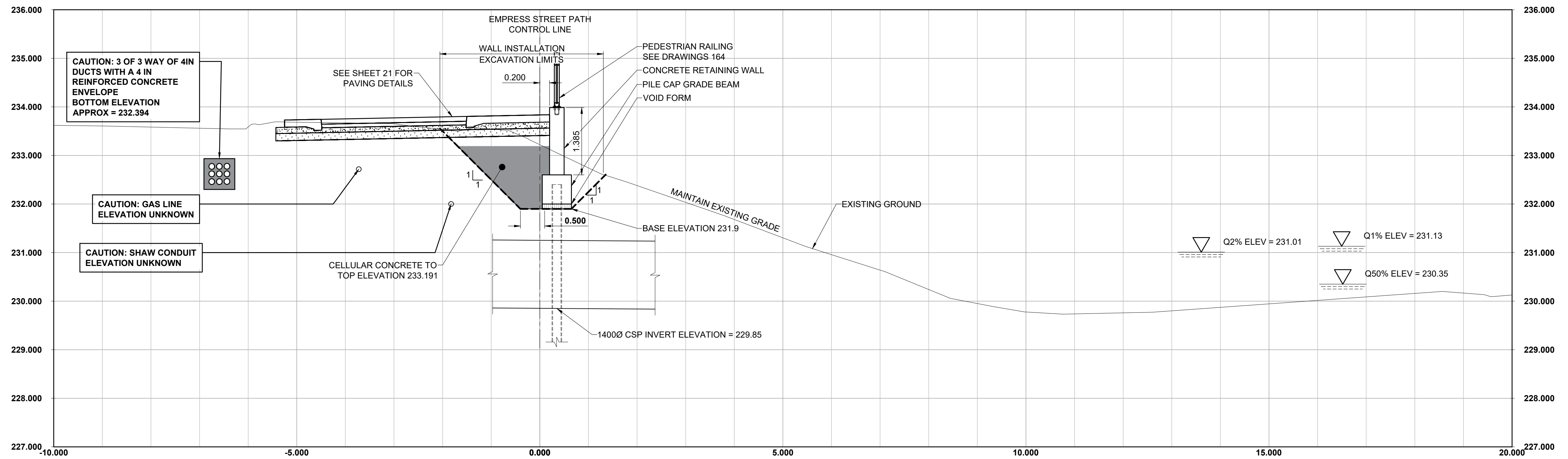


C:\Users\p1011603044\Desktop\Drawings\CS Sheets\Detailed Design\Structural\160034-Empress - DD St Matthews Wall.dwg    Last Saved: 9/20/2018 5:00 PM    by: A.Haggart    Plotted: 9/20/2018 9:22 PM    by: Alex Haggart    ISO A1 - 594mm x 841mm



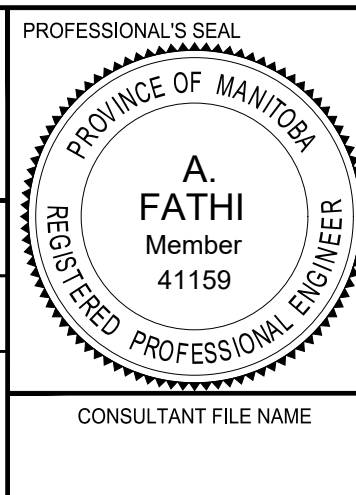
**METRIC**  
 WHOLE NUMBERS INDICATE MILLIMETRES  
 DECIMALIZED NUMBERS INDICATE METRES

**LOCATION APPROVED UNDERGROUND STRUCTURES**

SUPR. U/G STRUCTURES COMMITTEE DATE \_\_\_\_\_  
**NOTE:**  
 LOCATION OF UNDERGROUND STRUCTURES AS SHOWN ARE BASED ON THE BEST INFORMATION AVAILABLE BUT NO GUARANTEE IS GIVEN THAT ALL EXISTING UTILITIES ARE SHOWN OR THAT THE GIVEN LOCATIONS ARE EXACT. CONFIRMATION OF EXISTENCE AND EXACT LOCATION OF ALL SERVICES MUST BE OBTAINED FROM THE INDIVIDUAL UTILITIES BEFORE PROCEEDING WITH CONSTRUCTION.

NO.	REVISIONS	DATE	BY
C	ISSUED FOR TENDER	18/09/04	BAP
B	ISSUED FOR 95% DESIGN REVIEW	18/08/07	BAP
A	ISSUED FOR 50% DESIGN REVIEW	18/06/28	BAP

<b>MORRISON HERSHFIELD</b>	
DESIGNED BY: AF	CHECKED BY: BAP
DRAWN BY: TN	APPROVED BY: BAP
HOR SCALE: AS SHOWN	RELEASED FOR CONSTRUCTION
VERT SCALE: AS SHOWN	N/A
DATE	DATE



BID OPPORTUNITY No. 602-2018

**THE CITY OF WINNIPEG**  
 PUBLIC WORKS DEPARTMENT  
 ENGINEERING DIVISION

**EMPRESS STREET PROJECT**  
 EMPRESS STREET RETAINING WALL  
 CROSS SECTIONS 2

CITY DRAWING NUMBER	P-3494-162
SHEET OF	162 OF 168
DRAWING No.	REV
162	C