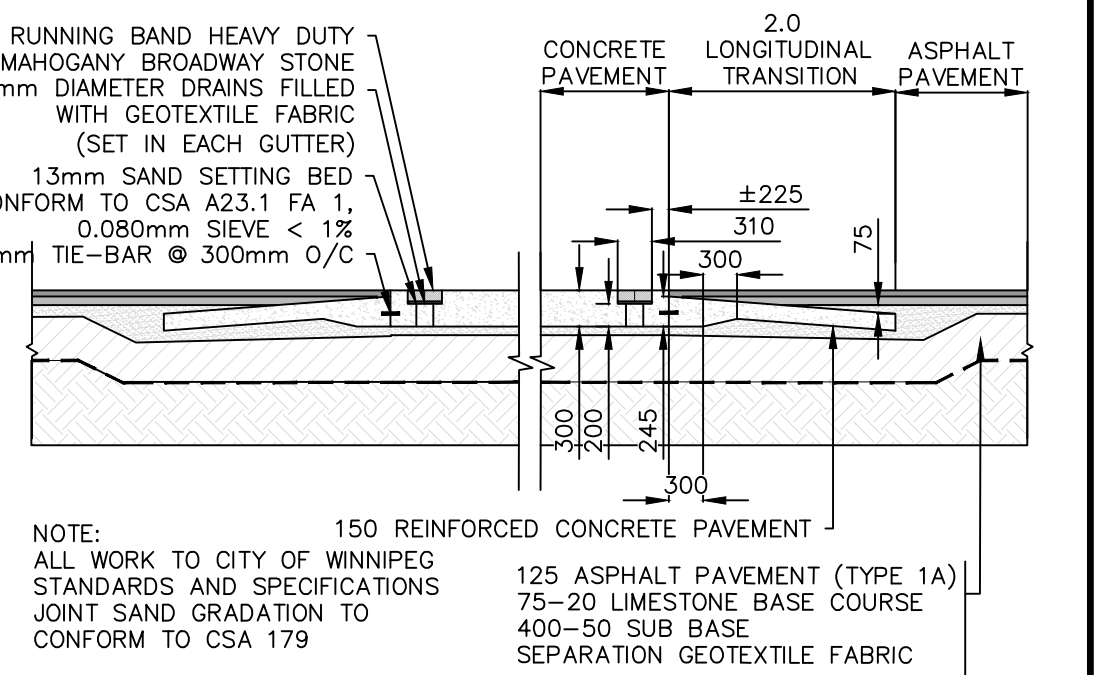
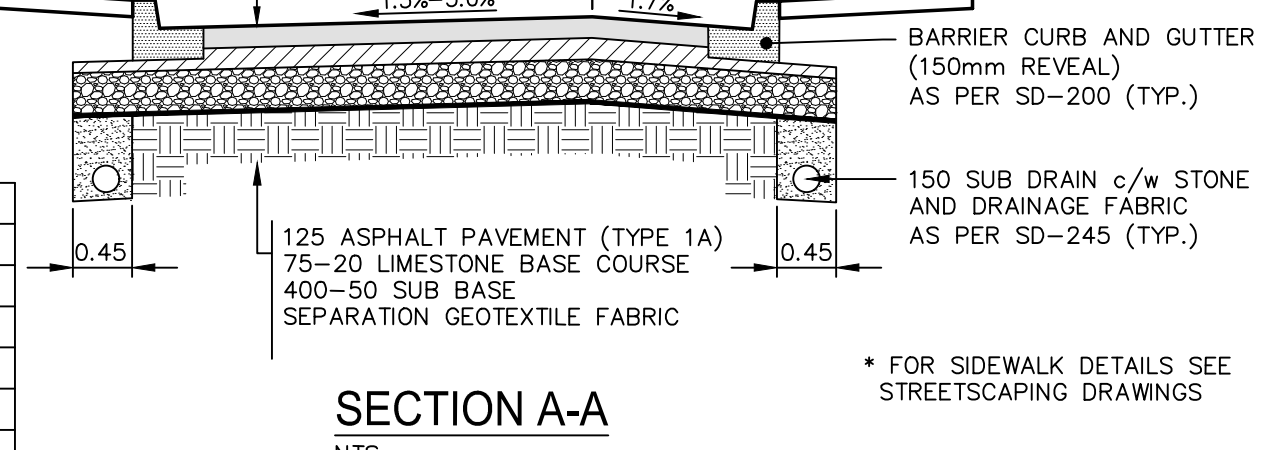


- NOTES:**
1. ALL WORK AND MATERIALS TO BE IN ACCORDANCE WITH THE LATEST REVISION OF THE CITY OF WINNIPEG STANDARD CONSTRUCTION SPECIFICATIONS.
 2. CONTRACTOR TO CONFIRM THE LOCATION OF ALL UTILITIES/SERVICES IN THE FIELD PRIOR TO CONSTRUCTION.
 3. ALL ROADWAY DIMENSIONS SHOWN ARE TO BACK OF CURB.
 4. ADD 200.00 TO ABBREVIATED ELEVATIONS TO OBTAIN GEODETIC ELEVATION.
 5. RENEW CURB AND SIDEWALK AS IDENTIFIED BY CONTRACT ADMINISTRATOR.
 6. MODIFIED BARRIER CURB TO BE CONSTRUCTED AT ALL INTERSECTION RADI AND BACK LANE RADI.
 7. INSTALL 40mm LIP CURB THROUGH ALL RESIDENTIAL APPROACHES.
 8. ALL EXISTING LONG WATER SERVICES TO BE INSULATED AS PER 50-018 (AS REQUIRED).
 9. LAMP STANDARDS, HYDRO POLES, AND ANCHORS THAT REQUIRE TEMPORARY SUPPORT, REMOVAL OR REPLACEMENT, TO BE DONE SO AT THE EXPENSE OF THE CONTRACTOR AS NECESSARY.
 10. CONTRACTORS TO TAKE PRECAUTIONARY STEPS TO PROTECT EXISTING TREES WITHIN THE LIMITS OF CONSTRUCTION FROM DAMAGE FROM CONSTRUCTION ACTIVITIES AS OUTLINED IN THE SPECIFICATIONS.
 11. ADJUST ALL WATER VALVES, HYDRANTS, MANHOLES, AND CATCH BASINS IN WORK AREA TO GRADE.



NOTE:
These design documents are prepared solely for the use by the party with whom the design professional has entered into a contract and there are no representations of any kind made by the design professional as to any party with whom the design professional has not entered into a contract.

EXISTING	LEGEND-PLAN	PROPOSED	EXISTING	LEGEND-PLAN	PROPOSED	EXISTING	LEGEND-PROFILE	PROPOSED
---	WATER MAIN	---	---	HYDRO POLE & LIGHT STANDARD	---	---	---	---
---	LAND DRAINAGE SEWER	---	---	LIGHT STANDARD OR TRAFFIC SIGNAL	---	---	---	---
---	WASTE WATER SEWER	---	---	HYDRO POLE	---	---	---	---
---	HYDRO	---	---	CURB RAMP	---	---	---	---
---	M.T.S.	---	---	DETECTABLE WARNING SURFACE TILE	---	---	---	---
---	GAS	---	---	EDGE OF SIDEWALK	---	---	---	---
---	SIGNALS	---	---	FENCE	---	---	---	---
○	MANHOLE	●	---	PROPERTY LINE	---	---	---	---
□	CATCH BASIN	■	---	EDGE OF ASPHALT	---	---	---	---
△	CURB INLET	▽	---	EDGE OF CONCRETE	---	---	---	---
⊃	UTILITIES ADJUSTED	△ □ ○	---	MODIFIED BARRIER CURB	---	---	---	---
⊂	PLUG	⊂	---	BARRIER CURB	---	---	---	---
⊕	HYDRANT	⊕	---	CURB AND GUTTER REPAIR	---	---	---	---
⊖	VALVE	⊖	---	MODIFIED BARRIER CURB AND GUTTER	---	---	---	---
⊙	CURB STOP	⊙	---	CONC. SIDEWALK WITH BLOCKOUTS	---	---	---	---
230.99	GROUND GRADE	---	---	CONCRETE REPAIR	---	---	---	---
(31.00)	PAVEMENT GRADE	(31.00)	---	ASPHALT OVERLAY	---	---	---	---
---	ANCHOR	---	---	PAVING STONE	---	---	---	---
#11	CIVIC ADDRESS	---	---	ASPHALT MILLING	---	---	---	---
⊕	IRON BAR	---	---	---	---	---	---	---
---	LEGEND-PLAN	---	---	---	---	---	---	---



LOCATIONS APPROVED UNDERGROUND STRUCTURES

SIGNED BY: _____ DATE: _____

LOCATION OF UNDERGROUND STRUCTURES AS SHOWN ARE BASED ON THE BEST INFORMATION AVAILABLE BUT NO GUARANTEE IS GIVEN THAT ALL EXISTING UTILITIES ARE SHOWN OR THAT THE GIVEN LOCATIONS ARE EXACT CONFIRMATION OF EXISTANCE AND EXACT LOCATION OF ALL SERVICES MUST BE OBTAINED FROM THE INDIVIDUAL UTILITIES BEFORE PROCEEDING

NO.	REVISIONS	DATE	BY
H			
G			
F			
E			
D			
C	ISSUED FOR TENDER	28-FEB-18	MV
B	ISSUED FOR U/G SERVICES REVIEW	08-JAN-18	MV
A	ISSUED FOR CLIENT REVIEW	10-NOV-17	MV

wsp

DESIGNED BY: MV
CHECKED BY: VM

DRAWN BY: SB
APPROVED BY: VM

HOR. SCALE: 1:250
VERTICAL: 1:10

RELEASED FOR CONSTRUCTION: _____ DATE: _____

DATE: 28-FEB-2018

WSP Canada Group Limited
Suite 111 - 93 Lombard Ave
Winnipeg, MB R3B 3B1
t. 204.943.3178
f. 204.943.4948
www.wsp.com

ENGINEER'S SEAL
V.M. MAROTI
Member 30809

THE CITY OF WINNIPEG
PUBLIC WORKS DEPARTMENT
ENGINEERING DIVISION

NORTH EAST EXCHANGE DISTRICT
STREET RENEWALS
JAMES AVENUE
LILY STREET TO WATERFRONT DRIVE
STA. 1+000 TO STA. 1+150

CITY DRAWING NUMBER
SHEET 1 OF 19
BID NO. 61-2018

Mar 01, 2018 - 11:03am - P:\2017\17M-0171-00 - 2018 North East Exchange WSP Dwg\17M-0171-00 C01-C07 James St. Waterfront Dr. Plan and Profile-2018.02.28.dwg - tab-C-01 James Street