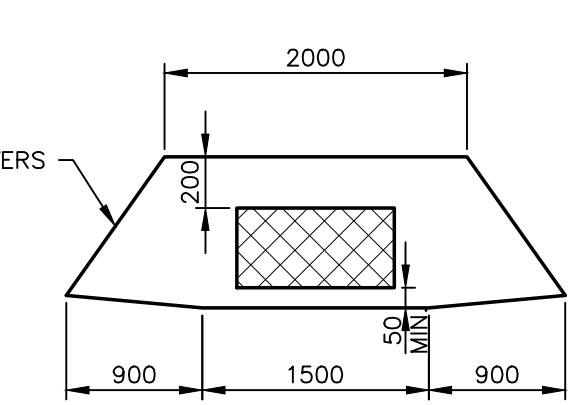
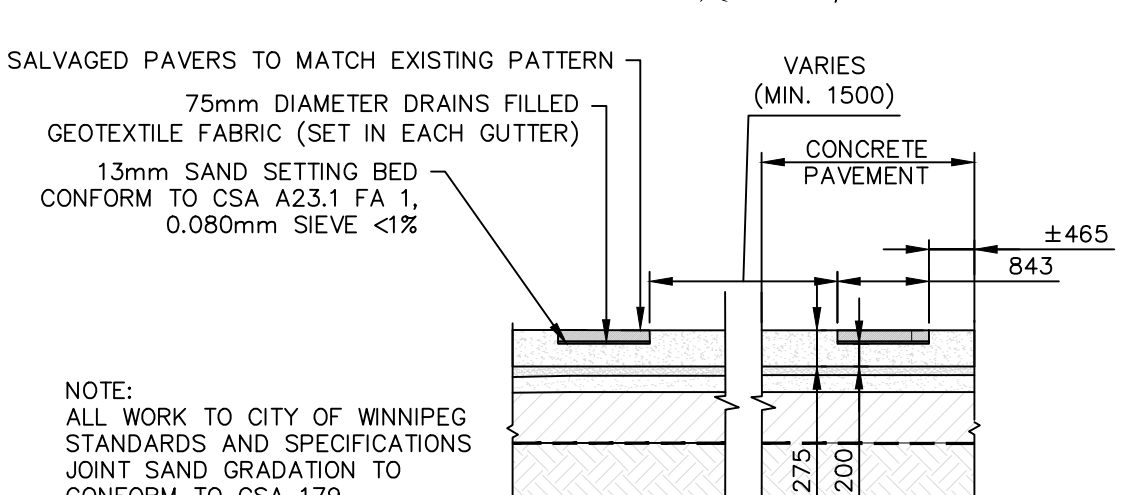
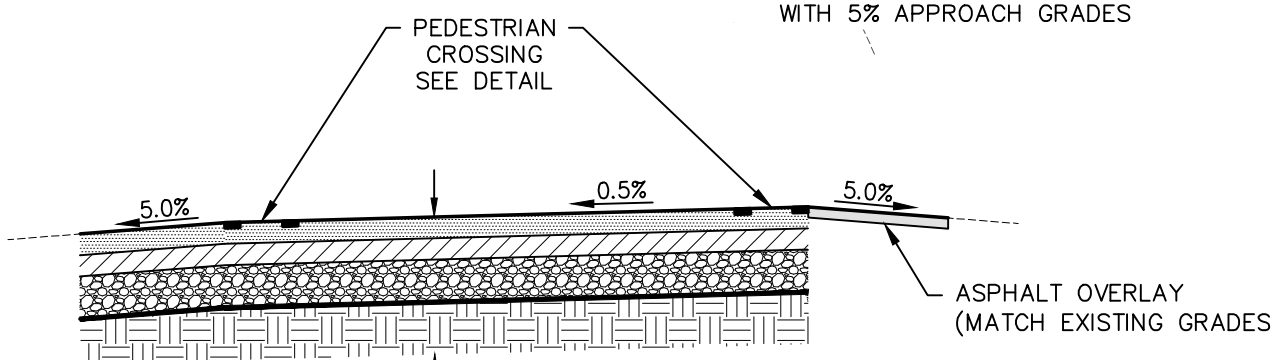
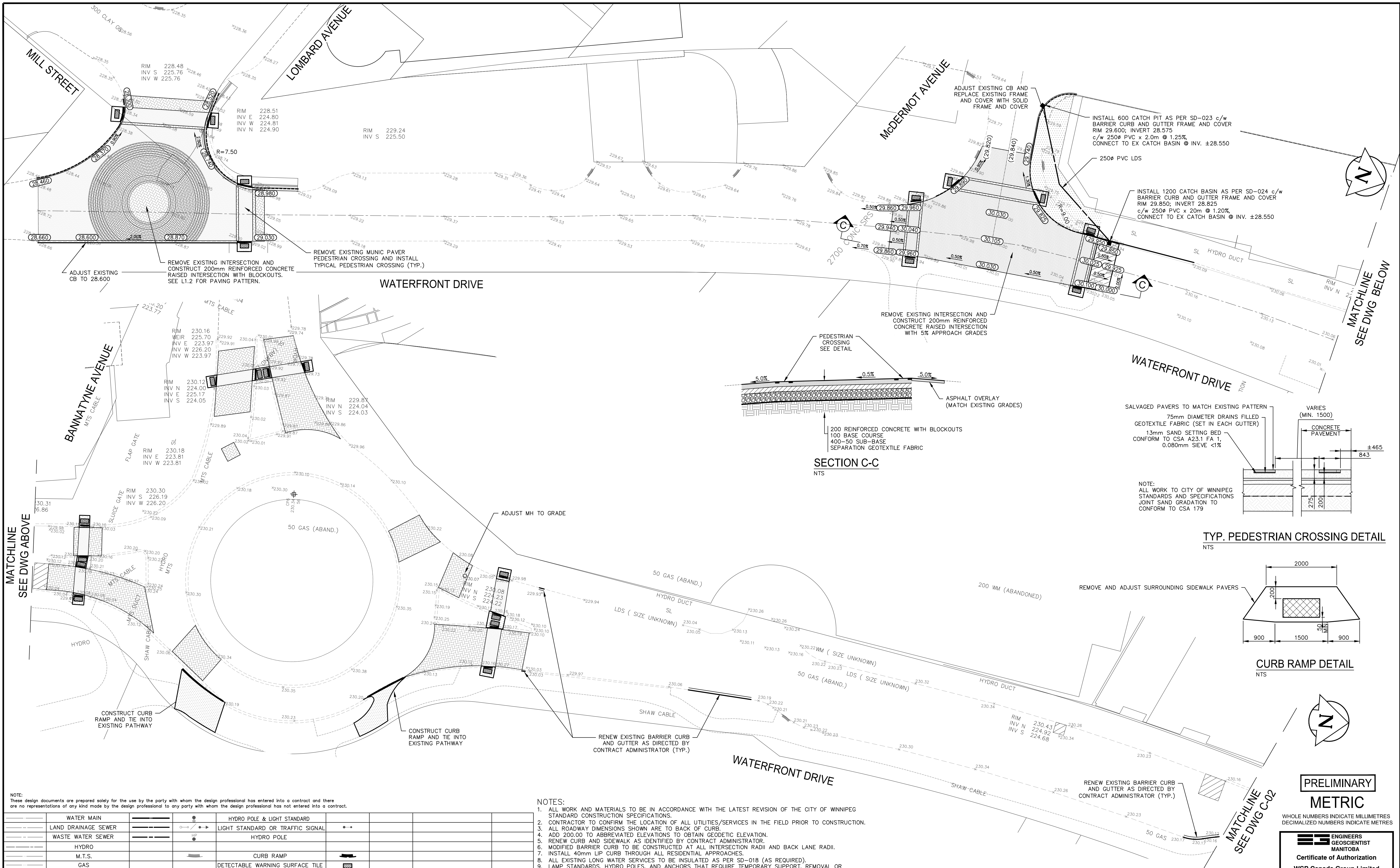


Mar 01, 2018 - 11:06am
P:\2017\17M-01771-00 - 2018 North East Exchange WSP Dwg\17M-01771-00 C01-C07 James St. Waterfront Dr Plan and Profile-2018.02.28.dwg -tab:C-03 Waterfront Drive



NOTE:
These design documents are prepared solely for the use by the party with whom the design professional has entered into a contract and there are no representations of any kind made by the design professional to any party with whom the design professional has not entered into a contract.

NOTES:

1. ALL WORK AND MATERIALS TO BE IN ACCORDANCE WITH THE LATEST REVISION OF THE CITY OF WINNIPEG STANDARD CONSTRUCTION SPECIFICATIONS.
2. CONTRACTOR TO CONFIRM THE LOCATION OF ALL UTILITIES/SERVICES IN THE FIELD PRIOR TO CONSTRUCTION.
3. ALL ROADWAY DIMENSIONS SHOWN ARE TO BACK OF CURB.
4. ADD 200.00 TO ABBREVIATED ELEVATIONS TO OBTAIN GEODETIC ELEVATION.
5. RENEW CURB AND SIDEWALK AS IDENTIFIED BY CONTRACT ADMINISTRATOR.
6. MODIFIED BARRIER CURB TO BE CONSTRUCTED AT ALL INTERSECTION RADII AND BACK LANE RADII.
7. INSTALL 40mm LIP CURB THROUGH ALL RESIDENTIAL APPROACHES.
8. ALL EXISTING LONG WATER SERVICES TO BE INSULATED AS PER SD-018 (AS REQUIRED).
9. LAMP STANDARDS, HYDRO POLES, AND ANCHORS THAT REQUIRE TEMPORARY SUPPORT, REMOVAL OR REPLACEMENT, TO BE DONE SO AT THE EXPENSE OF THE CONTRACTOR AS NECESSARY.
10. CONTRACTORS TO TAKE PRECAUTIONARY STEPS TO PROTECT EXISTING TREES WITHIN THE LIMITS OF CONSTRUCTION FROM DAMAGE FROM CONSTRUCTION ACTIVITIES AS OUTLINED IN THE SPECIFICATIONS.
11. ADJUST ALL WATER VALVES, HYDRANTS, MANHOLES, AND CATCH BASINS IN WORK AREA TO GRADE.

LOCATIONS APPROVED UNDERGROUND STRUCTURES

SIGNED BY: _____ DATE: _____
SUPV U/G STRUCTURES

LOCATION OF UNDERGROUND STRUCTURES AS SHOWN ARE BASED ON THE BEST INFORMATION AVAILABLE BUT NO GUARANTEE IS GIVEN THAT ALL EXISTING UTILITIES ARE SHOWN OR THAT THE GIVEN LOCATIONS ARE EXACT CONFIRMATION OF EXISTANCE AND EXACT LOCATION OF ALL SERVICES MUST BE OBTAINED FROM THE INDIVIDUAL UTILITIES BEFORE PROCEEDING

G.B.M. TOP OF TOP NUT ON HYDRANT SOUTHWEST CORNER OF JAMES AVENUE AND BERTHA STREET
ELEV. 232.033

H
G
F
E
D
C
B
A
NO.

ISSUED FOR TENDER 28-FEB-18 MV
ISSUED FOR U/G SERVICES REVIEW 08-JAN-18 MV
ISSUED FOR CLIENT REVIEW 10-NOV-17 MV
DATE BY

wsp

DESIGNED BY MV
CHECKED BY VM
DRAWN BY SB
APPROVED BY VM
HOR. SCALE 1:250
VERTICAL 1:10
RELEASED FOR CONSTRUCTION
DATE 28-FEB-2018

WSP Canada Group Limited
Suite 111 - 93 Lombard Ave
Winnipeg, MB R3B 3B1
t. 204.943.3178
f. 204.943.4848
www.wsp.com

ENGINEER'S SEAL
PROVINCE OF MANITOBA
V.M. MAROTI
Member 30809
REGISTERED PROFESSIONAL ENGINEER

CONSULTANT ACAD DWG. NO. C-03

Winnipeg

THE CITY OF WINNIPEG
PUBLIC WORKS DEPARTMENT
ENGINEERING DIVISION

NORTH EAST EXCHANGE DISTRICT
STREET RENEWALS
WATERFRONT DRIVE
LOMBARD AVENUE TO JAMES AVENUE

CITY DRAWING NUMBER

SHEET 4 OF 19

BID NO. 61-2018

PRELIMINARY
METRIC

WHOLE NUMBERS INDICATE MILLIMETRES
DECIMALIZED NUMBERS INDICATE METRES

ENGINEERS
GEOSCIENTIST
MANITOBA
Certificate of Authorization
WSP Canada Group Limited
No. 6657