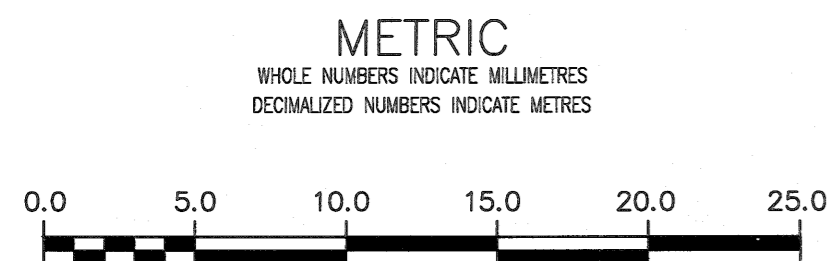
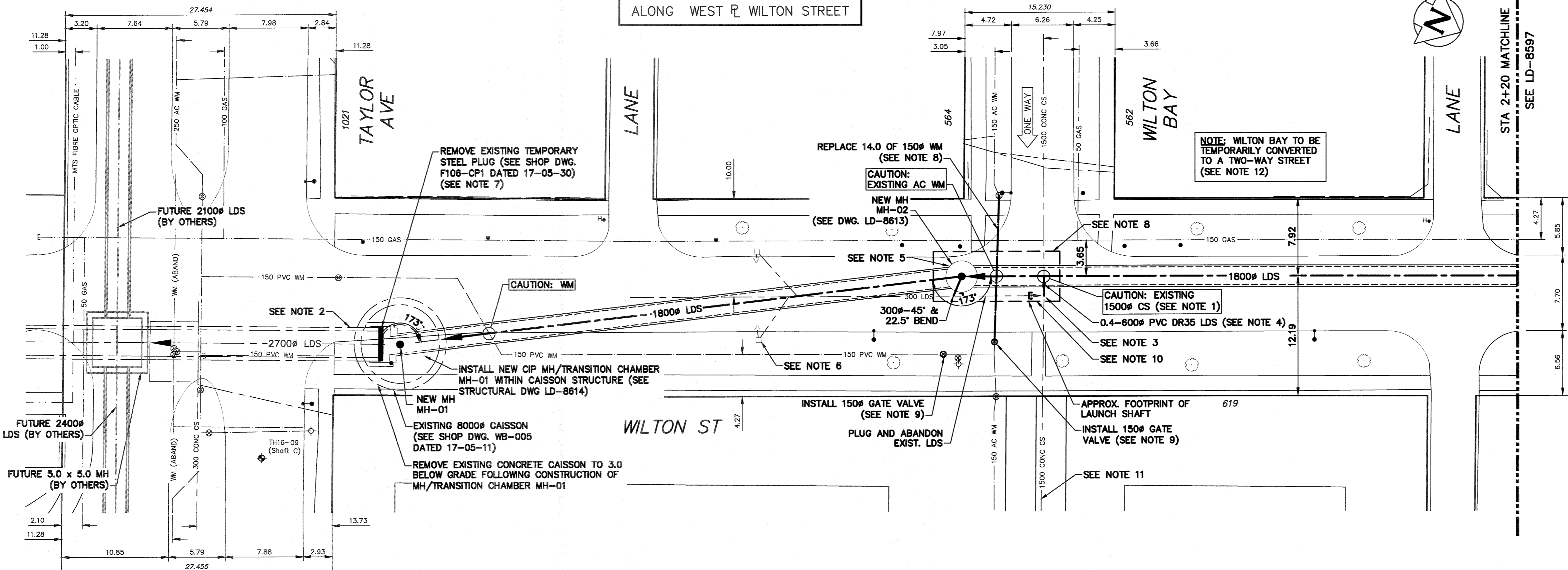


NOTES:

- SOFT DIG AT THE CROSSING WITH THE 1500# COMBINED SEWER TO CONFIRM DEPTH PRIOR TO START OF TRENCHLESS INSTALLATION OF NEW 1800# CONCRETE LDS.
- INSTALL A TEMPORARY PLUG IN DOWNSTREAM 2700# PIPE AT THE SOUTH SIDE OF MH-01 AND DEWATER THE CAISSON BEFORE START OF CONSTRUCTION.
- RENEW RISERS OF THE EXISTING COMBINED SEWER MANHOLE IN THE OPEN EXCAVATION IF SHAFT LOCATION ENROACHES ON TO THE 1500# CS.
- TEMPORARY CONNECTION BETWEEN THE COMBINED SEWER AND NEW 1800# LDS, THE CONNECTION WILL BE USED FOR PUMPED DEWATERING OF THE NEW LDS SYSTEM DURING CONSTRUCTION. CONTRACTOR TO INSTALL REMOVABLE PLUG IN 600# AT END OF PROJECT.
- MANHOLE MH-02 TO HAVE 1.0 DEEP TEMPORARY DRAINAGE SUMP THAT MAY BE USED FOR PUMPING DURING CONSTRUCTION. SUMP TO BE FILLED WITH CONCRETE AT END OF PROJECT.
- EXISTING LDS PIPES AND CB TO REMAIN AND BE REROUTED INTO MH-02.
- CONTRACTOR TO SUPPORT EXISTING 2700# PLUG DURING EXCAVATION OF BACKFILL IN EXISTING CAISSON. PLUG IS NOT INTENDED TO SUPPORT DOWNSTREAM WATER LEVEL. REMOVAL OF EXISTING PLUG SHALL BE UNDERTAKEN IN CONJUNCTION WITH CONTRACTOR'S DEWATERING AND DRAINAGE PLAN.
- MIN 1.0 CLEARANCE TO BE MAINTAINED BETWEEN SHAFT SHORING AND 150# MAIN GAS LINE.
- BEFORE LAUNCH SHAFT EXCAVATION INSTALL TWO NEW 150# VALVES TO PROVIDE UNDISTURBED WATER SUPPLY FOR ALL PROPERTIES. WATERMAIN SECTION WITHIN THE SHAFT LIMITS CAN BE REMOVED AND RENEWED AFTER MANHOLE MH-02 IS INSTALLED.
- SHORING DESIGN FOR SHAFT TO CONSIDER LOADING OF EXISTING 1500# COMBINED SEWER IF SHAFT LOCATION ENROACHES ON TO THE 1500# CS.
- COMPLETE PRE-/POST-CONSTRUCTION CCTV INSPECTION OF EXISTING 1500# CS FROM 1ST. MANHOLE WEST OF WILTON ST. TO THE 1ST. MANHOLE EAST OF WILTON ST.
- CONTRACTOR TO COORDINATE WITH CONTRACT ADMINISTRATOR AND THE CITY TO ARRANGE FOR HECTOR BAY TO TEMPORARILY BE MODIFIED TO A TWO-WAY STREET.

NOTE: CHAINAGES SHOWN ARE ALONG WEST R/W WILTON STREET



PROPERTY LIMITS DELINEATION
 DELINEATION OF PROPERTY LIMITS AS SHOWN ON THIS DWG DOES NOT REPRESENT A "LEGAL SURVEY". KGS GROUP MAKES NO REPRESENTATION OR WARRANTY AS TO THE ACCURACY OF PROPERTY LIMITS DELINEATED ON THIS DWG, NOR ON THE DIMENSIONAL ACCURACY OF DWG FEATURES RELATIVE TO THOSE PROPERTY LIMITS.

WARNING
 IF POWER EQUIPMENT OR EXPLOSIVES ARE TO BE USED FOR EXCAVATION ON THIS PROJECT THE CONTRACTOR MUST:
 1) NOTIFY THE GAS COMPANY OF THE PROPOSED LOCATION OF EXCAVATION.
 2) TAKE PRECAUTION TO AVOID DAMAGE TO GAS COMPANY INSTALLATIONS.
 SEE PROVINCIAL REGULATION 210/72 FOR DETAILS

LOCATION APPROVED UNDERGROUND STRUCTURES
 DATE _____
 DATE _____
 NOTE:
 LOCATION OF UNDERGROUND STRUCTURES AS SHOWN ARE BASED ON THE BEST INFORMATION AVAILABLE BUT NO GUARANTEE IS GIVEN THAT ALL EXISTING UTILITIES ARE SHOWN OR THAT THE GIVEN LOCATIONS ARE EXACT. CONFIRMATION OF EXISTENCE AND EXACT LOCATION OF ALL SERVICES MUST BE OBTAINED FROM THE INDIVIDUAL UTILITIES BEFORE PROCEEDING WITH CONSTRUCTION.

B.M.	ELEV.

DESIGNED BY	MID	CHECKED BY	<i>[Signature]</i>
DRAWN BY	GEL	APPROVED BY	<i>[Signature]</i>
SCALE:	HORIZONTAL 1:250	RELEASED FOR CONSTRUCTION	<i>[Signature]</i>
	VERTICAL 1:50		
ISSUED FOR CONSTRUCTION	2018 08 17	DATE	2018 08 17
NO.	REVISIONS	DATE	BY

ENGINEER'S SEAL

 CONSULTANT DRAWING NUMBER
 11-0107-18-C11_LD-8596

THE CITY OF WINNIPEG
 WATER AND WASTE DEPARTMENT
 ENGINEERING DIVISION
 COCKBURN & CALROSSIE SEWER RELIEF WORKS
 CONTRACT 11
WILTON STREET
 TAYLOR AVENUE TO GRANT AVENUE
 TAYLOR AVENUE TO STA 2+20
 SHEET 3 OF 22
 CITY DRAWING NUMBER
 LD-8596

ENGINEERS GEOSCIENTISTS MANITOBA
 Certificate of Authorization
 KGS Group
 No. 245