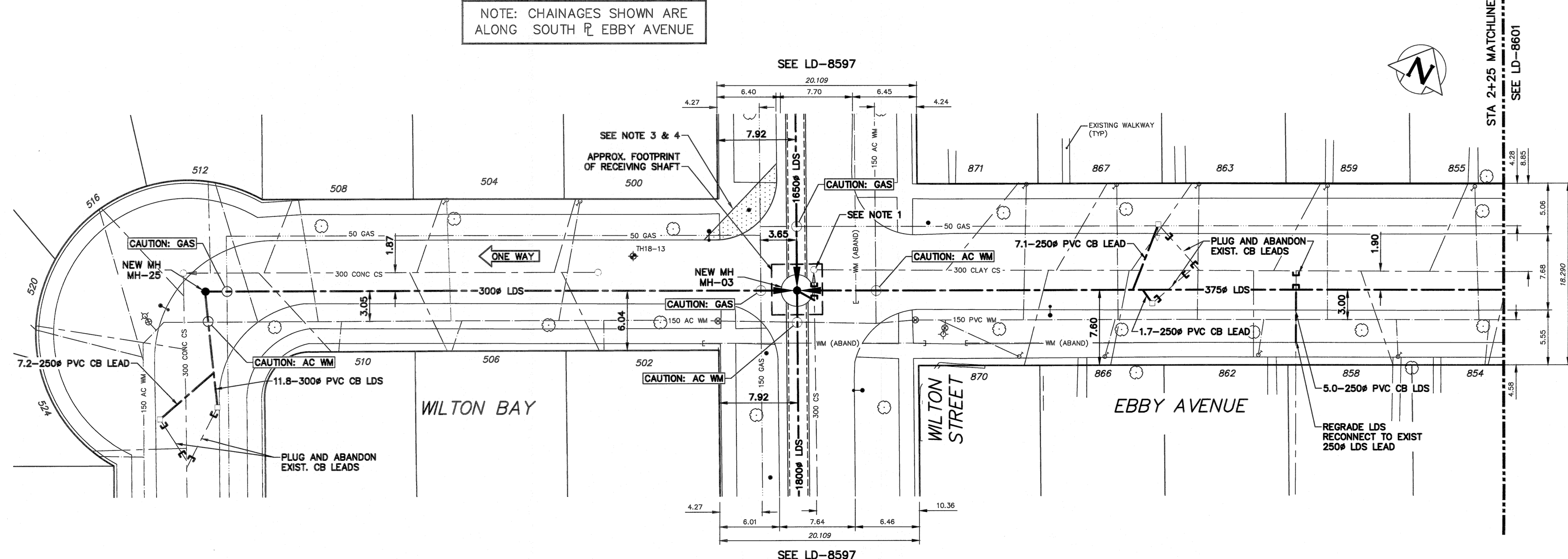


NOTES:

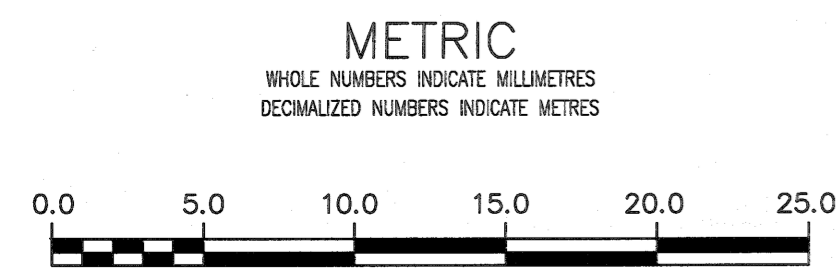
1. RENEW RISERS OF THE EXISTING COMBINED SEWER MANHOLE IN THE OPEN EXCAVATION IF SHAFT LOCATION ENCROACHES ON TO THE CS.
2. PROVIDE TEMPORARY TRAFFIC ACCESS TO WILTON BAY. CONTRACTOR TO RELOCATE LIGHT STANDARD, TRAFFIC SIGN AND TO INSTALL TEMPORARY ASPHALT PAVEMENT FOR SERVICE OF WILTON BAY. UPON CONSTRUCTION COMPLETION RESTORE SURFACES TO A CONDITION EQUAL TO ORIGINAL CONDITION.
3. PROVIDE TWO WAY TRAFFIC ACCESS TO WILTON BAY. CONTRACTOR TO RELOCATE LIGHT STANDARD, TRAFFIC SIGN AND INSTALL TEMPORARY ASPHALT PAVEMENT AS REQUIRED TO MAINTAIN TRAFFIC. UPON CONSTRUCTION COMPLETION RESTORE THE AREA TO A CONDITION EQUAL TO ORIGINAL CONDITION OR BETTER.
4. CONTRACTOR TO COORDINATE WITH CONTRACT ADMINISTRATOR AND THE CITY TO ARRANGE FOR HECTOR BAY TO TEMPORARILY BE MODIFIED TO A TWO-WAY STREET.

NOTE: CHAINAGES SHOWN ARE ALONG SOUTH R. EBBY AVENUE



STA 2+25 MATCHLINE
SEE LD-8601

ENGINEERS
GEOSCIENTISTS
MANITOBA
Certificate of Authorization
KGS Group
No. 245



PROPERTY LIMITS DELINEATION
DELINATION OF PROPERTY LIMITS AS SHOWN ON THIS DWG DOES NOT REPRESENT A "LEGAL SURVEY". KGS GROUP MAKES NO REPRESENTATION OR WARRANTY AS TO THE ACCURACY OF PROPERTY LIMITS DELINEATED ON THIS DWG, NOR ON THE DIMENSIONAL ACCURACY OF DWG FEATURES RELATIVE TO THOSE PROPERTY LIMITS.

WARNING
IF POWER EQUIPMENT OR EXPLOSIVES ARE TO BE USED FOR EXCAVATION ON THIS PROJECT THE CONTRACTOR MUST:
1) NOTIFY THE GAS COMPANY OF THE PROPOSED LOCATION OF EXCAVATION.
2) TAKE PRECAUTION TO AVOID DAMAGE TO GAS COMPANY INSTALLATIONS.
SEE PROVINCIAL REGULATION 210/72 FOR DETAILS

LOCATION APPROVED UNDERGROUND STRUCTURES
SUPV. U/G STRUCTURES COMMITTEE DATE
NOTE:
LOCATION OF UNDERGROUND STRUCTURES AS SHOWN ARE BASED ON THE BEST INFORMATION AVAILABLE BUT NO GUARANTEE IS GIVEN THAT ALL EXISTING UTILITIES ARE SHOWN OR THAT THE GIVEN LOCATIONS ARE EXACT. CONFIRMATION OF EXISTENCE AND EXACT LOCATION OF ALL SERVICES MUST BE OBTAINED FROM THE INDIVIDUAL UTILITIES BEFORE PROCEEDING WITH CONSTRUCTION.

B.M. ELEV.

0	ISSUED FOR CONSTRUCTION	2018 08 17	
NO.	REVISIONS	DATE	BY

KGS GROUP CONSULTING ENGINEERS

DESIGNED BY: MID
DRAWN BY: GEL
SCALE: HORIZONTAL 1:250, VERTICAL 1:50
CHECKED BY: [Signature]
APPROVED BY: [Signature]
RELEASED FOR CONSTRUCTION: [Signature]
DATE: 2018 08 17

ENGINEER'S SEAL
PROVINCE OF MANITOBA
MINKEVICH
Member
22789
CONSULTANT DRAWING NUMBER
11-0107-18-C11.LD-8600

THE CITY OF WINNIPEG
WATER AND WASTE DEPARTMENT
ENGINEERING DIVISION
COCKBURN & CALROSSIE SEWER RELIEF WORKS
CONTRACT 11
WILTON BAY/EBBY AVENUE
WILTON STREET TO GUELPH STREET
WILTON BAY WEST LEG TO STA 2+25

SHEET 7 OF 22
CITY DRAWING NUMBER
LD-8600