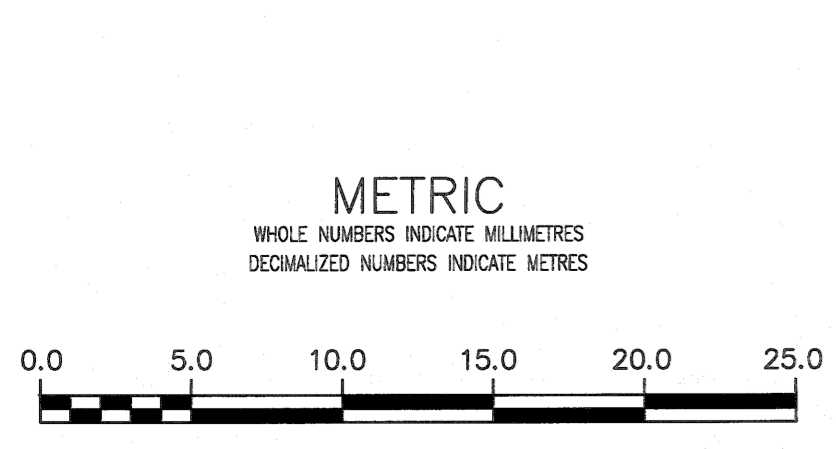
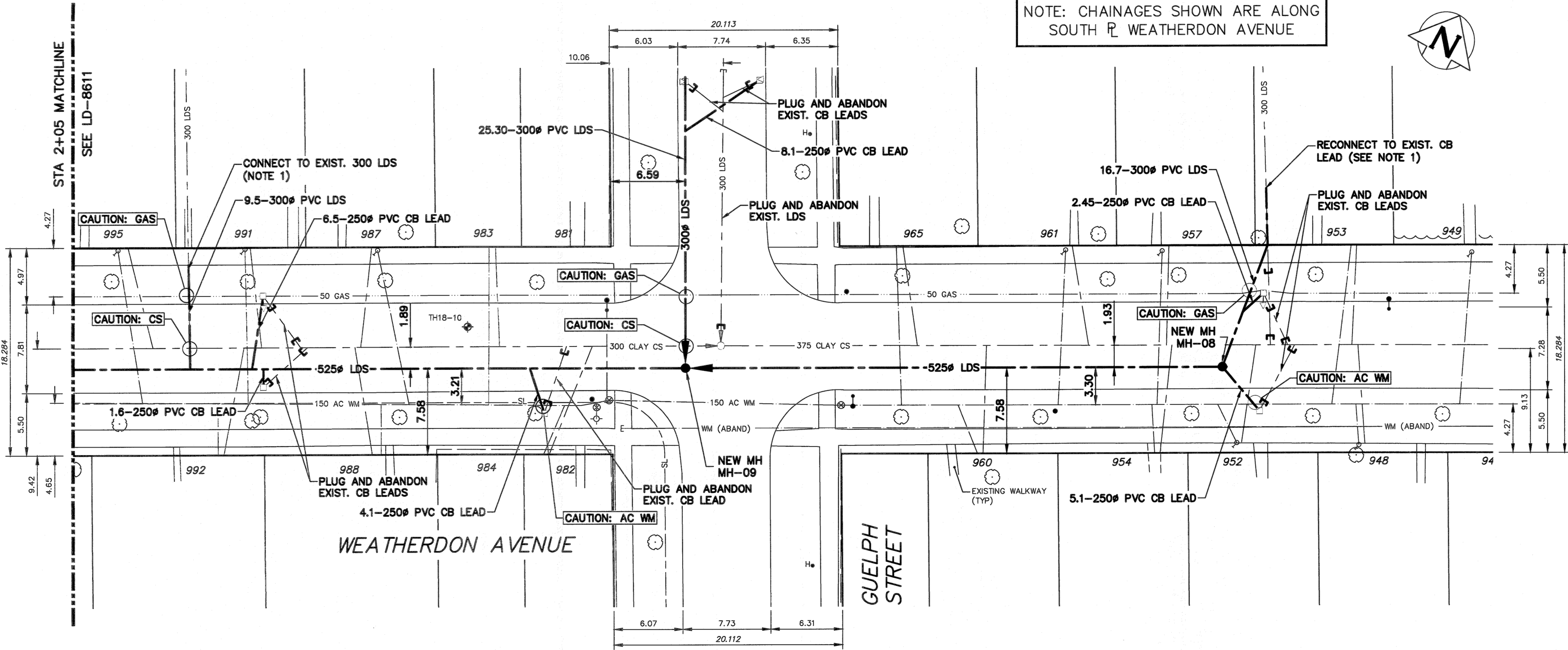


- NOTES:**
- SOFT DIG TO CONFIRM THE DEPTH OF EXISTING CB LEAD COMING FROM THE CATCH BASIN AT THE BACKLANE NORTH OF WEATHERDON AVE. PRIOR TO TYING INTO THE NEW LDS.



PROPERTY LIMITS DELINEATION
 DELINEATION OF PROPERTY LIMITS AS SHOWN ON THIS DWG DOES NOT REPRESENT A "LEGAL SURVEY". KGS GROUP MAKES NO REPRESENTATION OR WARRANTY AS TO THE ACCURACY OF PROPERTY LIMITS DELINEATED ON THIS DWG, NOR ON THE DIMENSIONAL ACCURACY OF DWG FEATURES RELATIVE TO THOSE PROPERTY LIMITS.

WARNING
 IF POWER EQUIPMENT OR EXPLOSIVES ARE TO BE USED FOR EXCAVATION ON THIS PROJECT THE CONTRACTOR MUST:
 1) NOTIFY THE GAS COMPANY OF THE PROPOSED LOCATION OF EXCAVATION.
 2) TAKE PRECAUTION TO AVOID DAMAGE TO GAS COMPANY INSTALLATIONS.
 SEE PROVINCIAL REGULATION 21072 FOR DETAILS

LOCATION APPROVED UNDERGROUND STRUCTURES
 SUPV. U/G STRUCTURES COMMITTEE DATE
 NOTE:
 LOCATION OF UNDERGROUND STRUCTURES AS SHOWN ARE BASED ON THE BEST INFORMATION AVAILABLE BUT NO GUARANTEE IS GIVEN THAT ALL EXISTING UTILITIES ARE SHOWN OR THAT THE GIVEN LOCATIONS ARE EXACT. CONFIRMATION OF EXISTENCE AND EXACT LOCATION OF ALL SERVICES MUST BE OBTAINED FROM THE INDIVIDUAL UTILITIES BEFORE PROCEEDING WITH CONSTRUCTION.

B.M.	ELEV.

DESIGNED BY	MID	CHECKED BY	<i>jm</i>
DRAWN BY	GEL	APPROVED BY	<i>RBO</i>
SCALE:	HORIZONTAL 1:250 VERTICAL 1:50	RELEASED FOR CONSTRUCTION	<i>[Signature]</i>
ISSUED FOR CONSTRUCTION	DATE 2018 08 17	DATE	2018 08 17
NO.	REVISIONS	DATE	BY

KGS GROUP CONSULTING ENGINEERS
 ENGINEER'S SEAL

 CONSULTANT DRAWING NUMBER
 P11-0107-18-C11_LD-8612

THE CITY OF WINNIPEG WATER AND WASTE DEPARTMENT ENGINEERING DIVISION
 COCKBURN & CALROSSIE SEWER RELIEF WORKS
 CONTRACT 11
WEATHERDON AVENUE
 WILTON STREET TO GUELPH STREET
 STA 2+05 TO ±40m EAST OF GUELPH ST
 SHEET 19 OF 22
 CITY DRAWING NUMBER
LD-8612

ENGINEERS GEOSCIENTISTS MANITOBA
 Certificate of Authorization
 KGS Group
 No. 245