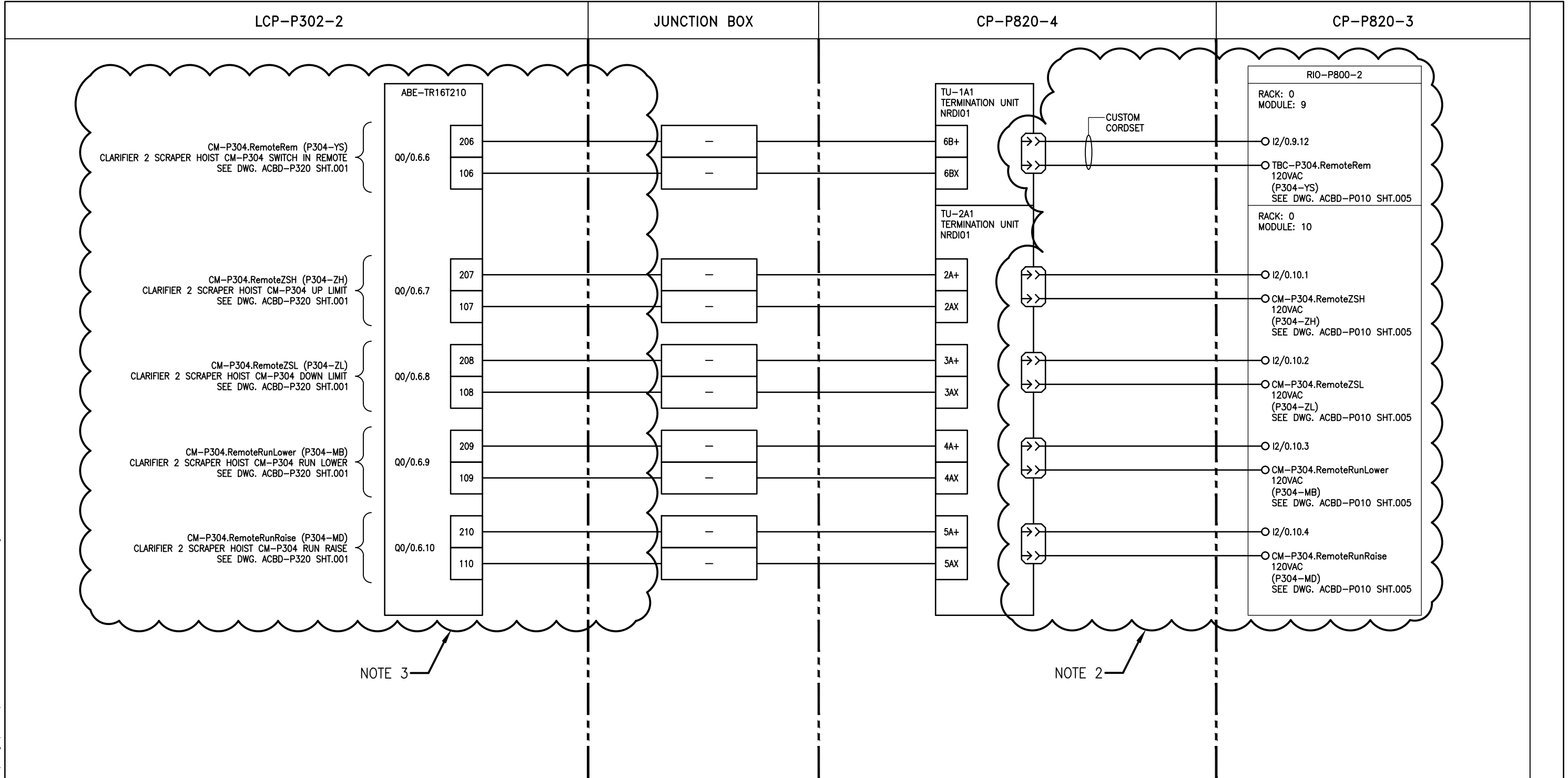


B SIZE - 279mm x 432mm

LAST SAVE: 2018/08/27 - 8:58am  
 PATH: P:\Projects\2018\18-0107-007\Dwg\Elec\1-0102-AILD-P307-002.dwg



NOTE 3

NOTE 2

**NOTES**

1. PREVIOUS IDENTIFIERS ARE SHOWN IN PARENTHESES.
2. SCOPE OF WORK NOT A PART OF 682-2018 CONTRACT.
3. SCOPE OF WORK INCLUDED WITHIN 682-2018 CONTRACT.



NO.	REVISIONS	DATE	DESIGN	CHECK
00	ISSUED FOR CONSTRUCTION - 682-2018	2018/08/27	DDW	JAB

**KGS GROUP**  
 CONSULTING ENGINEERS

DESIGNED BY: <b>D. WILSON</b>	CHECKED BY: <b>J. BOUCHARD</b>
DRAWN BY: <b>D. SHABATAEV</b>	APPROVED BY: <b>D. WILSON</b>
SCALE: <b>NTS</b>	DATE: <b>2018/07/20</b>
ISSUED FOR CONSTRUCTION	
BY: <b>B. STATION</b>	DATE: <b>2018/08/27</b>
CONSULTANT NO.: <b>1-0102-AILD-P307-002</b>	

ENGINEER'S SEAL

**THE CITY OF WINNIPEG**  
 WATER AND WASTE DEPARTMENT

**SOUTH END WATER POLLUTION CONTROL CENTRE  
 TRAVELLING BRIDGES REFURBISHMENT  
 AUTOMATION - LOOP DIAGRAM  
 RIO-P302 OUTPUTS / RIO-P800-2 INPUTS  
 PRIMARY CLARIFIER 2 TRAVELLING BRIDGE INTERCONNECTION**

CITY DRAWING NUMBER	SHEET	REV.	SIZE
<b>1-0102-AILD-P307</b>	<b>002</b>	<b>00</b>	<b>B</b>