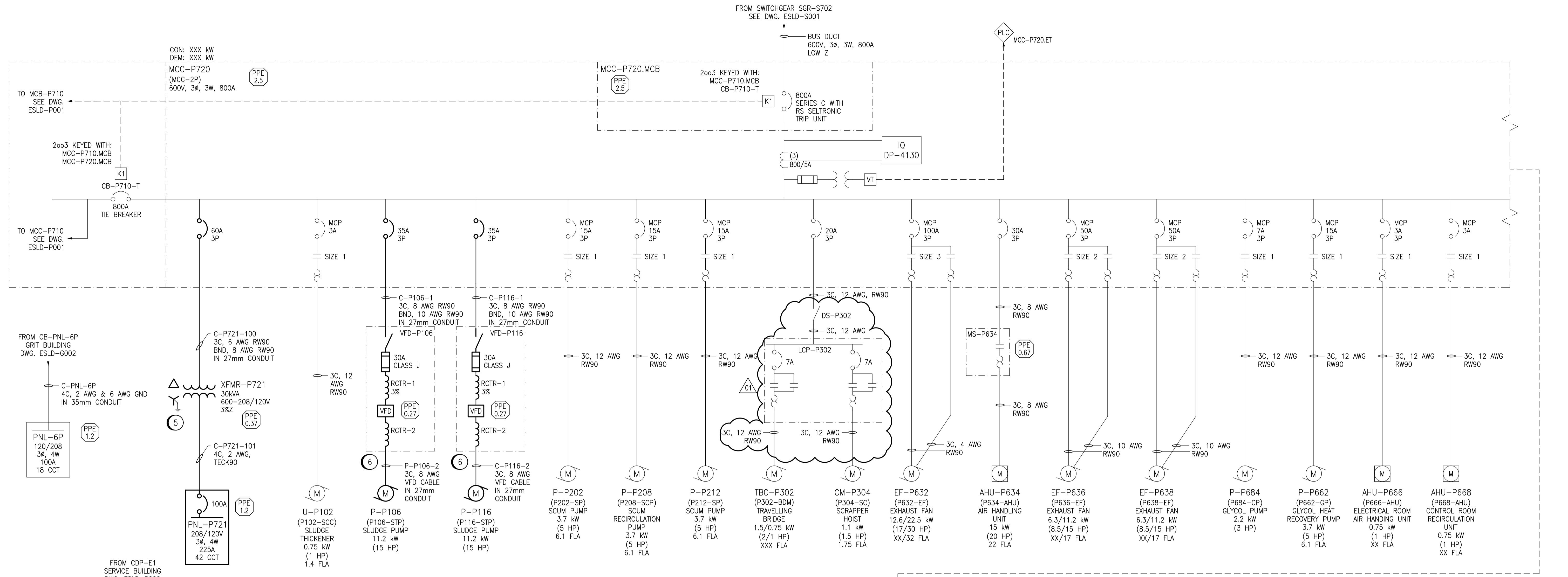


A1 SIZE - 594mm x 841mm

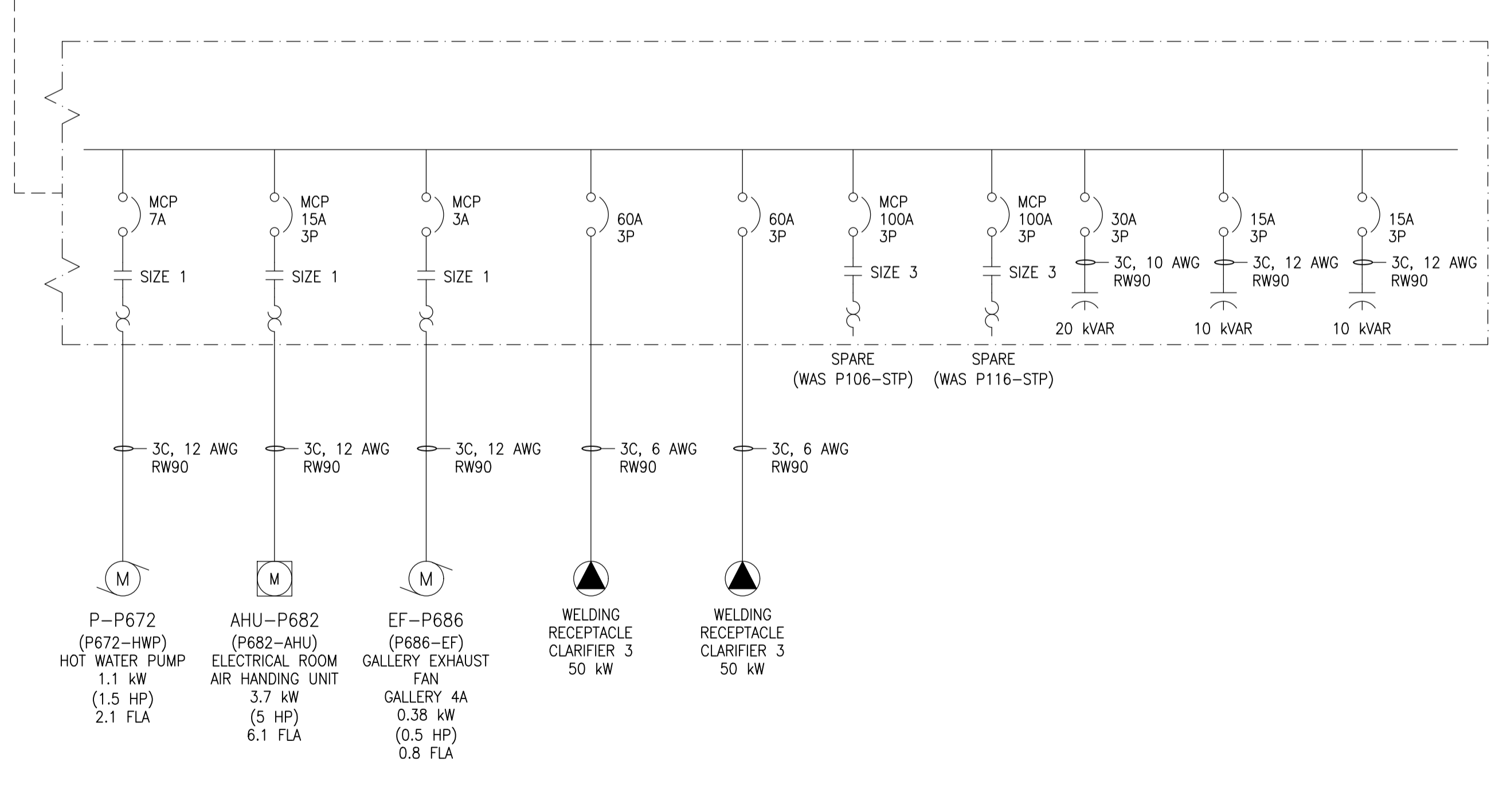


GENERAL NOTES:

1. THIS DRAWING SUPERSEDES PART OF DWG. 1-0102P-E0010.
2. RE-TAG SWITCHGEAR, DISTRIBUTION EQUIPMENT, AND ALL LOADS. PROVIDE NEW LAMACOIDS. PREVIOUS IDENTIFIERS SHOWN IN PARENTHESES. THESE ITEMS ARE NOT SHOWN CLOUDED.
3. THIS DRAWING IS BASED UPON EXISTING DOCUMENTATION, OF THE EXISTING FACILITY.
4. CLOUDED PORTION INDICATES NEW WORK / MODIFICATIONS TO EXISTING EQUIPMENT, EXCEPT AS NOTED. ALL CLOUDED PORTIONS OF WIRING, CONDUIT, BREAKERS, VFDs, ARE NEW AND ARE TO BE PROVIDED BY THE CONTRACTOR.

SPECIFIC NOTES:

1. PROVIDE ARGES EMERGENCY LIGHTING CENTRAL BATTERY SYSTEM. PROVIDE CABLING AND CONNECTIONS. REMOVE UN-USED CABLING / CONDUIT TO SUIT NEW ARRANGEMENT. SEE DWG. 1-0102-EGAD-P001.
2. DISCONNECT MCC-P32 FROM PANEL PNL-2P. RE-FEED FROM SERVICE BUILDING CDP-E1. SEE DWG. 1-0102-ESLD-B002.
3. PROVIDE NEW CABLING FROM XFMR-2P TO ELB-2P AND ELB-2P TO PNL-2P. REMOVE EXISTING CABLING FROM XFMR-2P TO PNL-2P.
4. PROVIDE SEPARATE 6 AWG RW90, GREEN INSULATED CONDUCTOR (RUN IN CONDUIT) FROM THE TRANSFORMER XO TERMINAL TO THE SYSTEM GROUND.
5. PROVIDE TRANSFORMER AND PANELBOARD. LOCATE EQUIPMENT IN ELECTRICAL ROOM B. REFER TO DWG 1-0102-EGAD-P002.
6. PROVIDE VFDs, FOR NEW PUMPS. PROVIDE NEW WIRING FROM MCC TO VFD AND FROM VFD TO NEW PUMP. LOCATE VFDs IN ELECTRICAL ROOM B. REFER TO DWGS 1-0102-EGAD-P002, SEP-285 AND SEP-287.



REFERENCE DRAWINGS	DESCRIPTION
1-0102-EGAD-P002	ELECTRICAL ROOM AND STORAGE ROOM LAYOUT
1-0102-EGAD-P003	EQUIPMENT LAYOUT PLAN - GALLERY 4
1-0102-ECBD-P002	MCC-P720 LAYOUT AND SCHEDULE
1-0102-EAAA-A001	ELECTRICAL, LEGEND AND DETAILS

REVISION 01 CHANGES	
THE ENGINEER'S DESIGN RESPONSIBILITIES ARE LIMITED TO THE CHANGES INDICATED IN THE CLOUDED WORK	
DESIGNED BY: D. WILSON	CHECKED BY: J. BOUCHARD
DRAWN BY: D. SHABATAEV	APPROVED BY: D. WILSON
DATE: 2018/08/27	RELEASED FOR CONSTR. DATE: 2018/08/27



NO.	REVISIONS	DATE	DESIGN	CHECK
01	RE-ISSUED FOR CONSTRUCTION-682-2018	2018/08/27	DDW	JAB
00	ISSUED FOR CONSTRUCTION - 976-2016	2017/04/05	WE	DEB

KGS GROUP CONSULTING ENGINEERS		ENGINEER'S SEAL
DESIGNED BY: D. WILSON	CHECKED BY: J. BOUCHARD	
DRAWN BY: D. SHABATAEV	APPROVED BY: D. WILSON	
SCALE: NTS	ISSUED FOR CONSTRUCTION BY: B. STATION	
DATE: 2018/07/20	DATE: 2018/08/27	
CONSULTANT NO.: 1-0102-ESLD-P002-001		

THE CITY OF WINNIPEG
WATER AND WASTE DEPARTMENT

SOUTH END WATER POLLUTION CONTROL CENTRE
SEWPPC UPGRADING/ EXPANSION PROJECT
ELECTRICAL - SINGLE LINE DIAGRAM
PRIMARY CLARIFIERS
MCC-P720 AND MISCELLANEOUS

CITY DRAWING NUMBER	SHEET	REV.	SIZE
1-0102-ESLD-P002	001	01	A1

LAST SAVE: 2018/08/27 - 10:03am
PATH: P:\Projects\2018\18-0107-007 Dwg [Elec] \1-0102-ESLD-P002-001.dwg