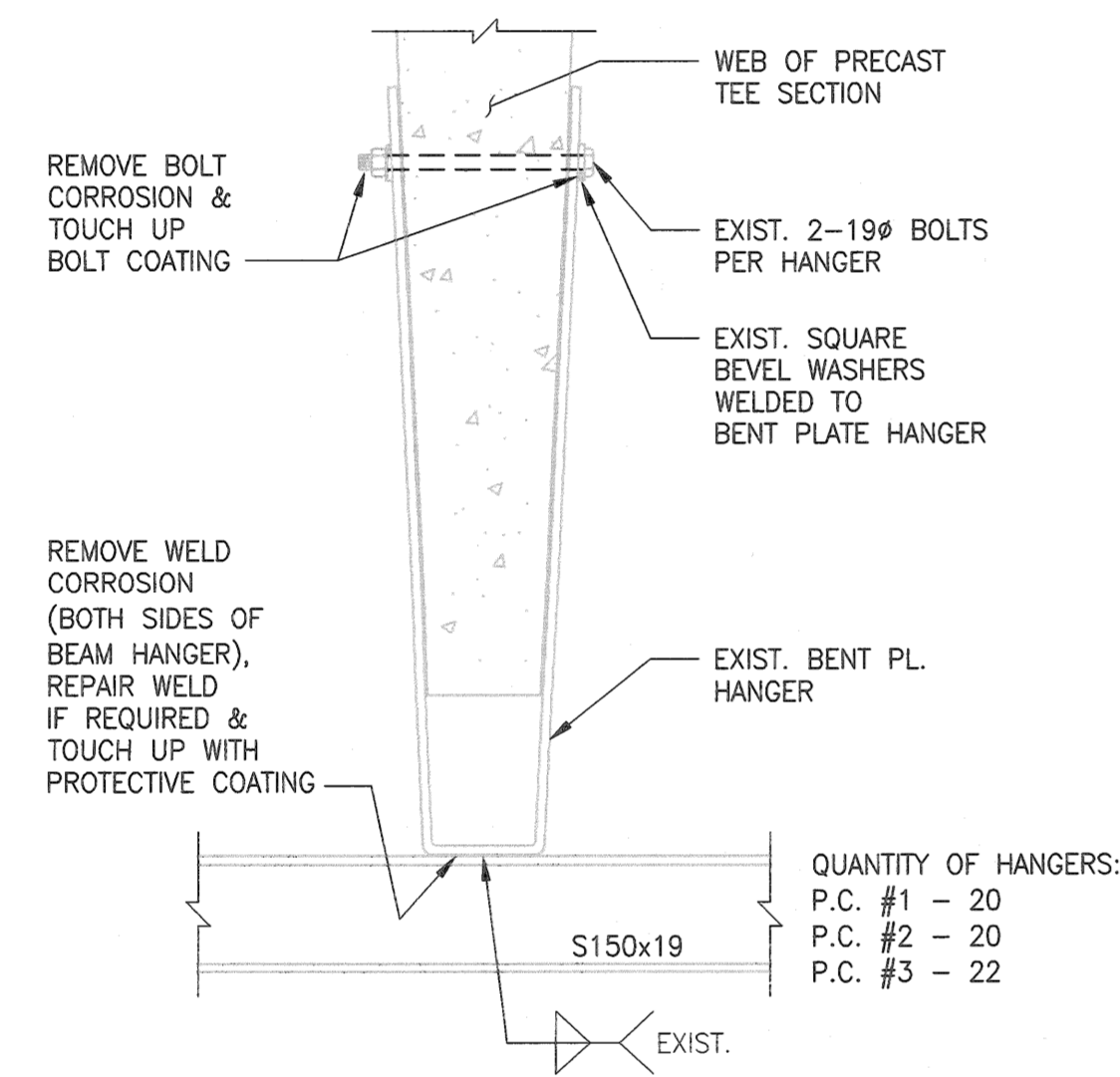
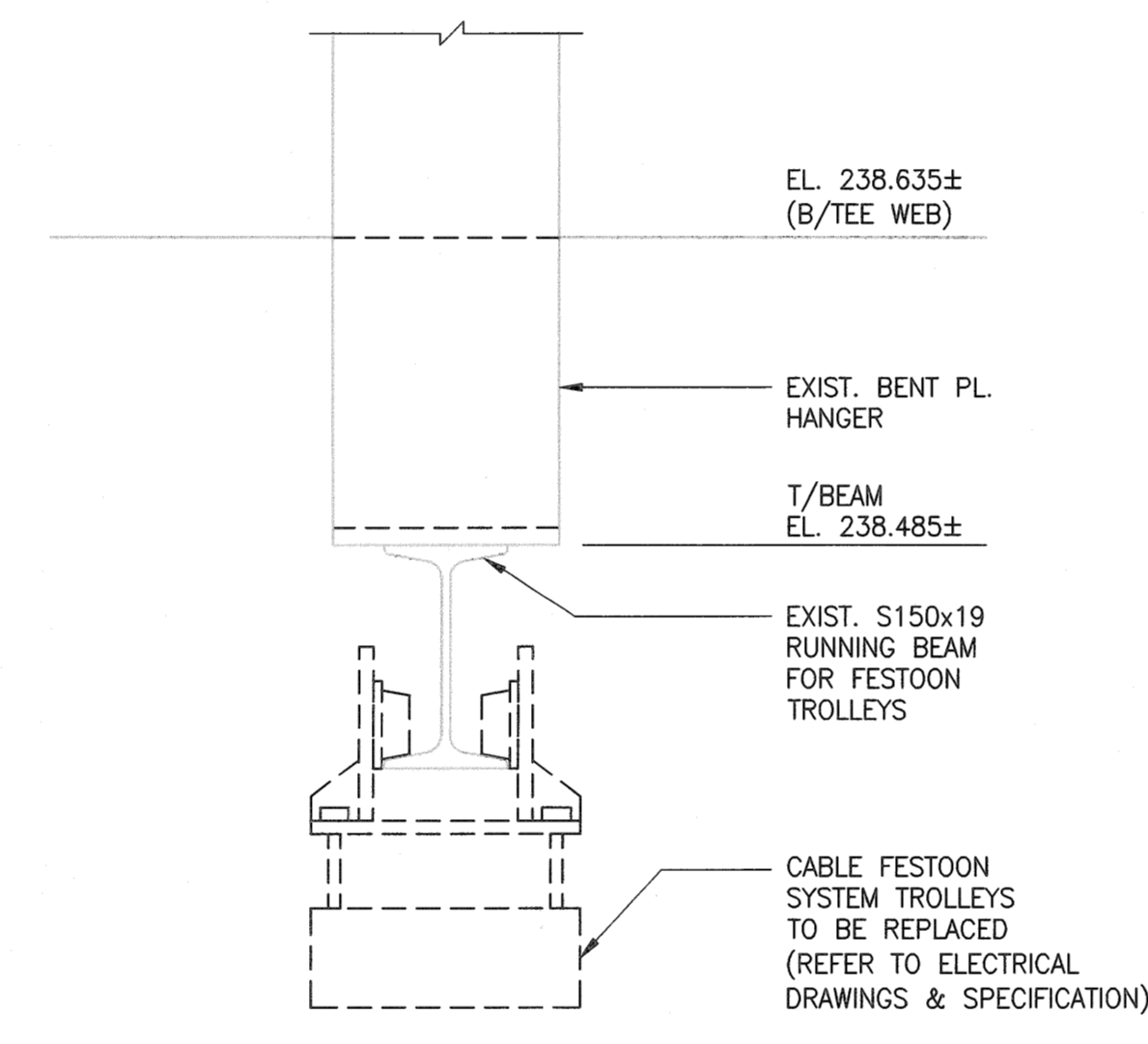


A
S01
PARTIAL SECTION
SCALE: 1:30



1
DETAIL
SCALE: 1:10



SECTION A-A
SCALE: 1:5

STRUCTURAL AND MISCELLANEOUS STEEL:

- WELDING SHALL BE IN ACCORDANCE WITH CSA W59 (2013), BY WELDERS CERTIFIED AND QUALIFIED IN ACCORDANCE WITH CSA W47.1-09 (R2014). ALL WELDS TO BE 6mm UNLESS NOTED OTHERWISE.
- STRUCTURAL AND MISCELLANEOUS STEEL SHALL BE FINISHED AS INDICATED BELOW, UNLESS OTHERWISE NOTED, OR APPROVED EQUAL:
 - INTERIOR STEEL (TOUCH-UPS)**
 - SURFACE PREP. TO SP-3 (HAND TOOL CLEANING).
 - ONE COAT OF BAR-RUST 235 HIGH-BUILD EPOXY (8 MIL DFT.).
- COLOUR OF STRUCTURAL AND MISCELLANEOUS STEEL SHALL BE AS FOLLOWS:
 - FESTOON - SAFETY YELLOW.
 - BRIDGES - BLACK.
- FIELD TOUCH-UP PAINT TO CONNECTIONS, WELDS, BURNED OR DAMAGED SURFACES, AND UNFINISHED SURFACES AT COMPLETION OF ERECTION AND SHALL MATCH THICKNESS AS SPECIFIED.
- PAINTED SURFACES OF EXISTING STEEL SHALL BE GROUND SMOOTH TO BARE METAL PRIOR TO FIELD WELDING.



DESIGNED BY: K. DYCK	CHECKED BY: C. SIEPMAN
DRAWN BY: F. VALENCIA	APPROVED BY: R. DERKSEN
SCALE: AS SHOWN	ISSUED FOR CONSTRUCTION BY: B. STATION
DATE: 2018/07/20	DATE: 2018/08/27
CONSULTANT NO.: S02	

NO.	REVISIONS	DATE	DESIGN	CHECK
0	ISSUED FOR CONSTRUCTION - 682-2018	2018/08/27	KRD	CMS



THE CITY OF WINNIPEG
WATER AND WASTE DEPARTMENT

SOUTH END WATER POLLUTION CONTROL CENTRE
TRAVELLING BRIDGES REFURBISHMENT
STRUCTURAL
PRIMARY CLARIFIERS
STRUCTURAL STEEL DETAILS

CITY DRAWING NUMBER 1-0102-SSST-P001	SHEET 001	REV. 0	SIZE A1
---	--------------	-----------	------------