

APPENDIX 'C'

GEOTECHNICAL REPORT

APPENDIX 'C' - GEOTECHNICAL REPORT

TABLE OF CONTENTS

GEOTECHNICAL REPORT FOR MAIN STREET FROM MCADAM AVE TO KILDONAN PARK GOLF COURSE	1
Pavement Core Locations	1
Summary of Core Samples	1
Pavement Core Photos	3

The geotechnical report is provided to aid in the Contractor's evaluation of the existing pavement structure. The information presented is considered accurate at the locations shown on the Drawings and at the time of coring. However, variations in pavement structure may exist between test holes. The nature and extent of variations may not become evident until construction commences.

Geotechnical Report for Main Street from McAdam Ave to Kildonan Park Golf Course

Pavement Core Locations



Summary of Core Samples

Core ID	Testhole Location	Pavement Surface		Comments
		Type	Thickness (mm)	
C01	Main Street Northbound middle lane, 31 m north of Rupertsland Avenue 6 m west of east curb	Asphalt	0	<ul style="list-style-type: none"> core located on joint of concrete slabs. crushed limestone base below concrete pavement
		Concrete	200	
C02	Main Street Southbound median lane, At Jefferson Avenue intersection 0 m of east curb	Asphalt	0 135*	<ul style="list-style-type: none"> core located on asphalt/concrete joint of south Main Street and Jefferson Avenue at median boulevard (asphalt on southbound Main Street) crushed limestone base below concrete pavement
		Concrete	265 130*	
C03	Main Street Northbound median lane, 36m north of Hardford Avenue 9 m west of east curb	Asphalt	0	<ul style="list-style-type: none"> core located on joint of concrete slabs. crushed limestone base below concrete pavement
		Concrete	190	
C04	Main Street Northbound curb lane, 27 m south of Burrin Avenue 2 m west of east curb	Asphalt	0	<ul style="list-style-type: none"> core located on middle of concrete slab. crushed limestone base below concrete pavement
		Concrete	200	
C05	Main Street Southbound median lane, At Royal Avenue intersection 0 m of east curb	Asphalt	0 50*	<ul style="list-style-type: none"> core located on asphalt/concrete joint of south Main Street and Royal Avenue at median boulevard (asphalt on southbound Main Street) crushed limestone base below concrete pavement
		Concrete	260 210*	
C06	Main Street Northbound median lane, 30 m south of Armstrong Avenue 9 m west of east curb	Asphalt	0	<ul style="list-style-type: none"> core located on middle of concrete slab. crushed limestone base below concrete pavement
		Concrete	205	

Notes: 1. * denotes the half of the core sample with asphalt and concrete pavement. Core sample is located on a joint with one half asphalt and concrete pavement and the other half concrete pavement.

Pavement Core Photos

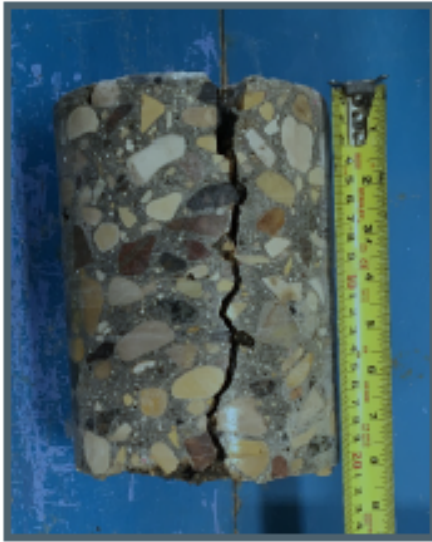


Figure 1 - C01 Core



Figure 2 - C02 Core

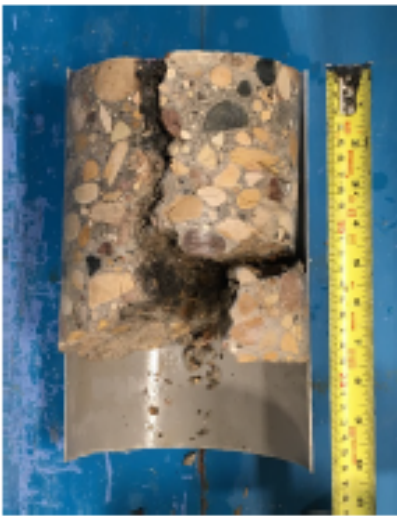


Figure 3 - C03 Core

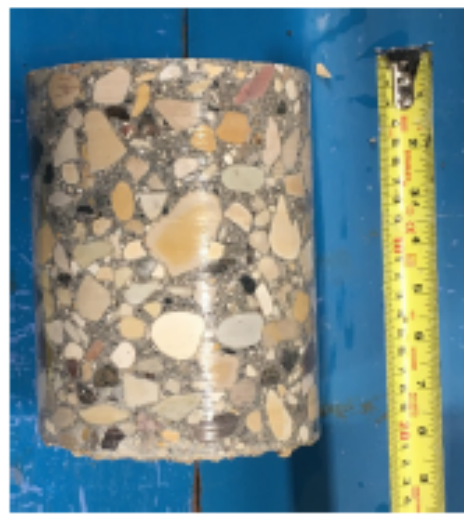


Figure 4 - C04 Core



Figure 5 - C05 Core



Figure 6 - C06 Core