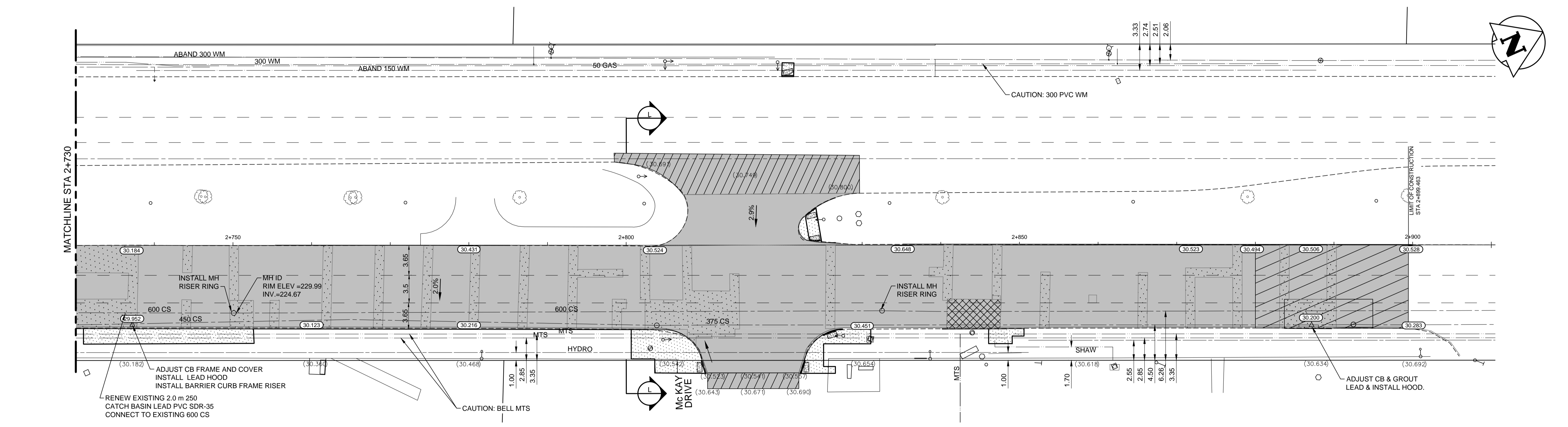


MAIN STREET



WARNING

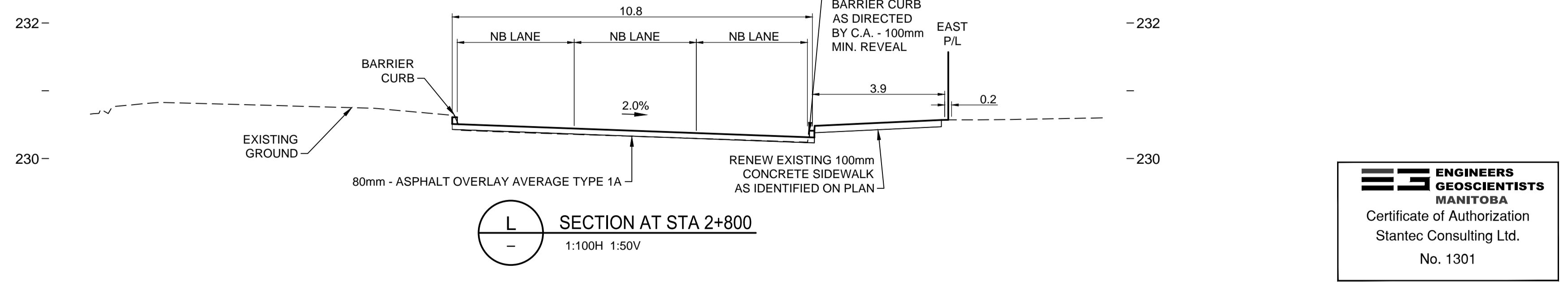
IF POWER EQUIPMENT OR EXPLOSIVES ARE TO BE USED FOR EXCAVATION ON THIS PROJECT THE CONTRACTOR MUST:
 1) NOTIFY THE GAS COMPANY OF THE PROPOSED LOCATION OF EXCAVATION.
 2) TAKE PRECAUTION TO AVOID DAMAGE TO GAS COMPANY INSTALLATIONS.
 SEE PROVINCIAL REGULATION 140/92 FOR DETAILS

METRIC

WHOLE NUMBERS INDICATE MILLIMETRES
 DECIMALIZED NUMBERS INDICATE METRES

NOTES:

- WORKS IN CLOSE PROXIMITY TO THE 400mm FEEDERMAIN SHALL BE DONE IN ACCORDANCE WITH E18 OF THE SPECIFICATION. FURTHER TO E18.10.1, VIBRATORY COMPACTION SHALL NOT BE PERMITTED WITHIN 3.0m OF THE CENTERLINE OF THE 400mm FEEDERMAIN.
- ADJUST ALL WATER VALVES, MANHOLES AND CATCH BASINS TO GRADE.
- ADJUST ALL WATER SERVICE VALVES TO GRADE, EXISTING SERVICE VALVES ARE NOT SHOWN HERE BUT ARE WITHIN THE SIDEWALK RENEWAL AREA.



EXISTING	LEGEND-PLAN	PROPOSED	EXISTING	LEGEND-PLAN	PROPOSED	EXISTING	LEGEND-PROFILE	PROPOSED
150 WM	WATERMAIN	150 WM	HYDRANT	M.T.S.	CONCRETE	300 LDS	LAND DRAINAGE SEWER	300 LDS
300 LDS	LAND DRAINAGE SEWER	300 LDS	250 WWS	WASTE WATER SEWER	250 WWS	ASPHALT	SIDEWALK	ASPHALT
250 WWS	WASTE WATER SEWER	250 WWS	MANHOLE	PROPERTY LINE	PROPERTY LINE	MANHOLE	NORTH OR WEST GUTTER	MANHOLE
MANHOLE	PROPERTY LINE	PROPERTY LINE	CATCH BASIN	SURVEY BAR	SURVEY BAR	CATCH BASIN	SOUTH OR EAST GUTTER	CATCH BASIN
CATCH BASIN	SURVEY BAR	SURVEY BAR	CURB INLET	GLAS GRID	GLAS GRID	CURB INLET	NORTH OR WEST P	CURB INLET
CURB INLET	GLAS GRID	GLAS GRID	JUNCTIONS	ELEVATION	ELEVATION	JUNCTIONS	SOUTH OR EAST P	JUNCTIONS
JUNCTIONS	ELEVATION	ELEVATION	CULVERT	SIDEWALK RAMP	SIDEWALK RAMP	CULVERT	NORTH OR WEST DITCH	CULVERT
CULVERT	SIDEWALK RAMP	SIDEWALK RAMP	GAS	MILL EXISTING ASPHALT	MILL EXISTING ASPHALT	GAS	SOUTH OR EAST DITCH	GAS
GAS	MILL EXISTING ASPHALT	MILL EXISTING ASPHALT	EXISTING	LEGEND-PLAN	PROPOSED	EXISTING	LEGEND-PROFILE	PROPOSED

LOCATION APPROVED UNDERGROUND STRUCTURES

SUPV. U/G STRUCTURES COMMITTEE

DATE

NOTE:
 LOCATION OF UNDERGROUND STRUCTURES AS SHOWN ARE BASED ON THE BEST INFORMATION AVAILABLE BUT NO GUARANTEE IS GIVEN THAT ALL EXISTING UTILITIES ARE SHOWN OR THAT THE GIVEN LOCATIONS ARE EXACT. CONFIRMATION OF EXISTENCE AND EXACT LOCATION OF ALL SERVICES MUST BE OBTAINED FROM THE INDIVIDUAL UTILITIES BEFORE PROCEEDING WITH CONSTRUCTION.

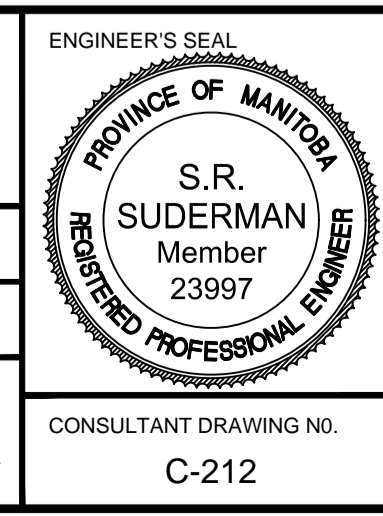
NO.	REVISIONS	DATE	BY
2	ISSUED FOR TENDER	19.01.25	S.R.S.
1	ISSUED FOR U/G STRUCTURES REVIEW	18.12.12	S.R.S.
0	ISSUED FOR 98% REVIEW	18.11.08	S.R.S.

Stantec
 500 - 311 Portage Avenue, Winnipeg MB
 www.stantec.com

DESIGNED BY	T.G.	CHECKED BY	D.M.
DRAWN BY	M.K.	APPROVED BY	S.S.

HOR. SCALE: 1:250
 VERTICAL: 1:10

RELEASED FOR CONSTRUCTION: _____
 DATE: 2018.11.08



THE CITY OF WINNIPEG
 PUBLIC WORKS DEPARTMENT
 ENGINEERING DIVISION

2019 REGIONAL STREET RENEWAL PROGRAM

MAIN STREET
 STA 2+730 TO STA 2+887.071
 ROADWORKS

SHEET OF 15 25
 CAD FILE DRAWING NUMBER 07620c-211-920.dwg
 CITY DRAWING NUMBER P-3502-15

CONSULTANT DRAWING NO. C-212

VA:1137\active\113707620\0300_drawing\0302_sheet_files\02_civil\07620c-211-920.dwg
 2019/01/29 3:09 PM By: Kijarntson, Melanie