

1 BUS STOP FLAG BASE WITH CONCRETE SIDEWALK & UNIT PAVER INSERT
6 16 N.T.S.

**ENGINEERS
GEOLOGISTS
MANITOBA**
Certificate of Authorization
Stantec Consulting Ltd.
No. 1301

VA 1137\active\113707620\0300_drawing\02_sheet_files\02_sheet_files\07620c-501-920.dwg
2019/01/29 3:10 PM By: Kjarntanson, Melanie

150 WM	WATERMAIN	150 WM	HYDRO	CONCRETE
⊕	HYDRANT	⊕	M.T.S.	ASPHALT
⊙	VALVE	⊙	PROPERTY LINE	SIDEWALK
300 LDS	LAND DRAINAGE SEWER	300 LDS	SURVEY BAR	MILL EXISTING ASPHALT
250 WWS	WASTE WATER SEWER	250 WWS (31.334)	ELEVATION (32.231)	GLAS GRID
○	MANHOLE	●	SIDEWALK RAMP	
□	CATCH BASIN	■		
▽	CURB INLET	▽		
+	JUNCTIONS	+		
—	CULVERT	—		
—	GAS	—		
EXISTING	LEGEND-PLAN	PROPOSED	LEGEND-PLAN	PROPOSED

LOCATION APPROVED UNDERGROUND STRUCTURES

SUPV. U/G STRUCTURES COMMITTEE DATE

NOTE:
LOCATION OF UNDERGROUND STRUCTURES AS SHOWN ARE BASED ON THE BEST INFORMATION AVAILABLE BUT NO GUARANTEE IS GIVEN THAT ALL EXISTING UTILITIES ARE SHOWN OR THAT THE GIVEN LOCATIONS ARE EXACT. CONFIRMATION OF EXISTENCE AND EXACT LOCATION OF ALL SERVICES MUST BE OBTAINED FROM THE INDIVIDUAL UTILITIES BEFORE PROCEEDING WITH CONSTRUCTION.

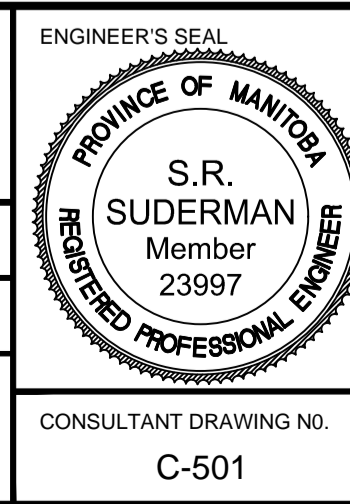
B.M. ELEV.	NO.	REVISIONS	DATE	BY
	2	ISSUED FOR TENDER	19.01.25	S.R.S.
	1	ISSUED FOR U/G STRUCTURES REVIEW	18.12.12	S.R.S.
	0	ISSUED FOR 98% REVIEW	18.11.08	S.R.S.

Stantec
500 - 311 Portage Avenue, Winnipeg MB
www.stantec.com

DESIGNED BY	T.G./J.D.	CHECKED BY	D.M.
DRAWN BY	M.K.	APPROVED BY	S.R.S.

HOR. SCALE: 1:500
VERTICAL: _____

RELEASED FOR CONSTRUCTION: _____
DATE: 2018.11.08



THE CITY OF WINNIPEG
PUBLIC WORKS DEPARTMENT
ENGINEERING DIVISION

2019 REGIONAL STREET RENEWAL PROGRAM
MAIN STREET
FROM McADAM AVE TO 87m NORTH OF ARMSTRONG
MISCELLANEOUS DETAILS

SHEET OF 16 25
CAD FILE DRAWING NUMBER 07620c-501-920.dwg
CITY DRAWING NUMBER P-3502-16

CONSULTANT DRAWING NO. C-501