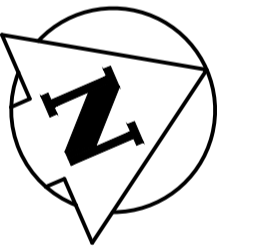
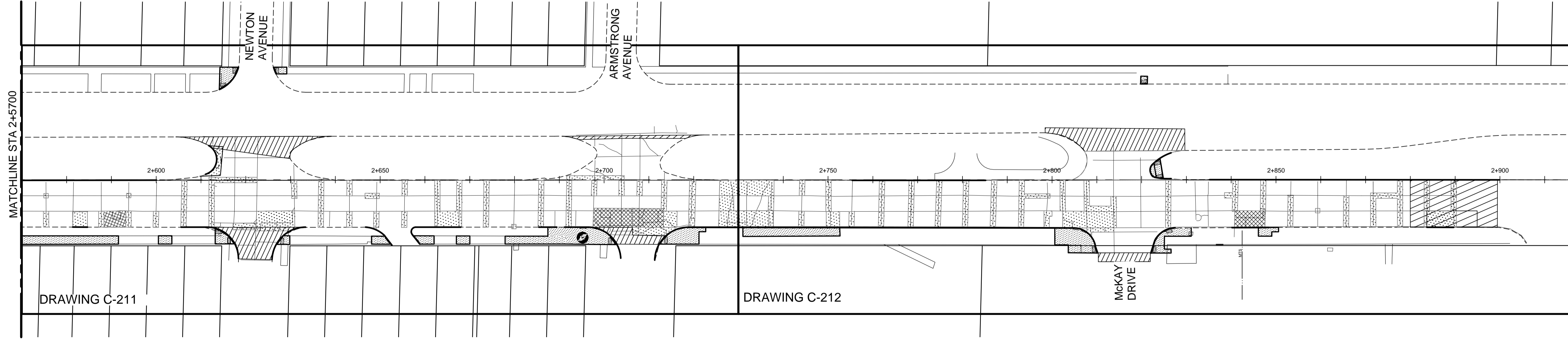
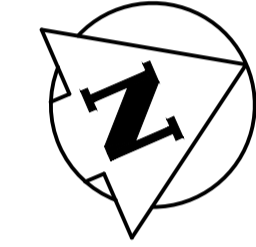
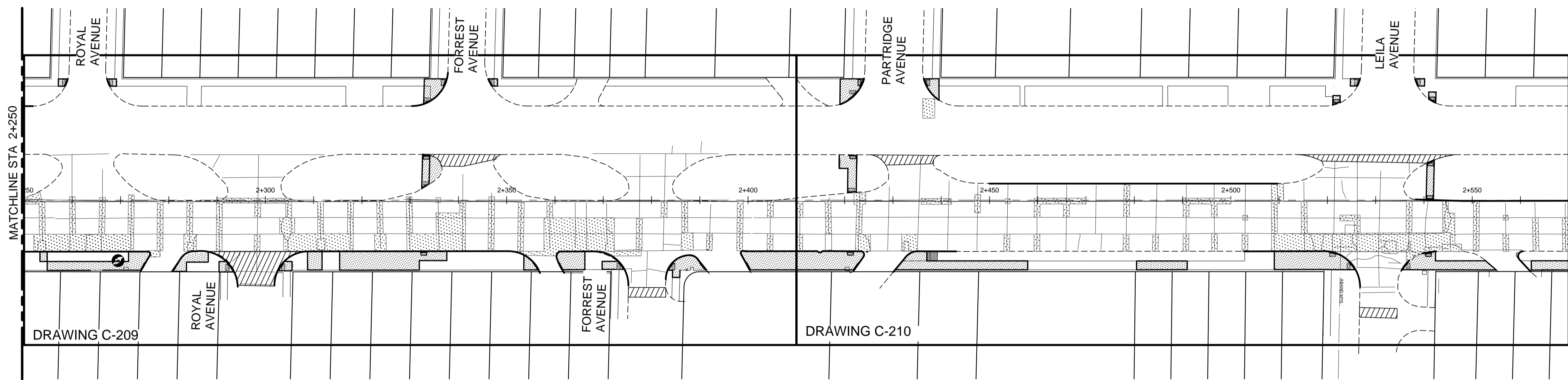


- NOTES**
- EXISTING PAVEMENT PATCHES AND CONCRETE JOINTS ARE SHOWN ON DRAWING FOR INFORMATION AND REFERENCE.
 - THE CONTRACT ADMINISTRATOR TO MARK OUT ALL PAVEMENT, CURB AND SIDEWALK REPAIR LOCATIONS PRIOR TO SAW-CUTTING.
 - NEW ASPHALT LIMITS ARE NOT SHOWN FOR CLARITY.
 - RENEW EXISTING BARRIER CURB WITH 100mm REVEAL SEPARATE BARRIER CURB AS DIRECTED BY CONTRACT ADMINISTRATOR.
 - MATCH EXISTING RADII FOR CURB RENEWAL UNLESS OTHERWISE NOTED.
 - REFER TO RESPECTIVE SHEET IDENTIFIED ON PLAN FOR ADDITIONAL DETAILS AND GRADING.
 - SEE SPECIFICATION FOR REQUIREMENTS FOR WORKING NEAR EXISTING 300 CAST IRON WATERMAIN.
 - CURB RENEWAL ASSOCIATED WITH 'B' REPAIRS NOT SHOWN FOR CLARITY.



VA:1137\active\113707620\0300_drawing\0302_sheet_files\02_civil\07620c-101-920.dwg 2019/01/29 2:57 PM By: Kjarntansen, Melanie

| | | | | |
|----------|---------------------|------------------|---------------|-----------------------|
| 150 WM | WATERMAIN | 150 WM | HYDRO | CONCRETE |
| ⊕ | HYDRANT | ⊕ | M.T.S. | ASPHALT |
| ⊗ | VALVE | ⊕ | PROPERTY LINE | SIDEWALK |
| 300 LPS | LAND DRAINAGE SEWER | 300 LPS | SURVEY BAR | MILL EXISTING ASPHALT |
| 250 WWS | WASTE WATER SEWER | 250 WWS (31.334) | ELEVATION | GLAS GRID |
| ○ | MANHOLE | ● | SIDEWALK RAMP | |
| □ | CATCH BASIN | ■ | | |
| ▽ | CURB INLET | ▼ | | |
| + | JUNCTIONS | + | | |
| — | CULVERT | — | | |
| — | GAS | — | | |
| EXISTING | LEGEND-PLAN | PROPOSED | LEGEND-PLAN | PROPOSED |

LOCATION APPROVED UNDERGROUND STRUCTURES

SUPV. U/G STRUCTURES COMMITTEE DATE

NOTE:
LOCATION OF UNDERGROUND STRUCTURES AS SHOWN ARE BASED ON THE BEST INFORMATION AVAILABLE BUT NO GUARANTEE IS GIVEN THAT ALL EXISTING UTILITIES ARE SHOWN OR THAT THE GIVEN LOCATIONS ARE EXACT. CONFIRMATION OF EXISTENCE AND EXACT LOCATION OF ALL SERVICES MUST BE OBTAINED FROM THE INDIVIDUAL UTILITIES BEFORE PROCEEDING WITH CONSTRUCTION.

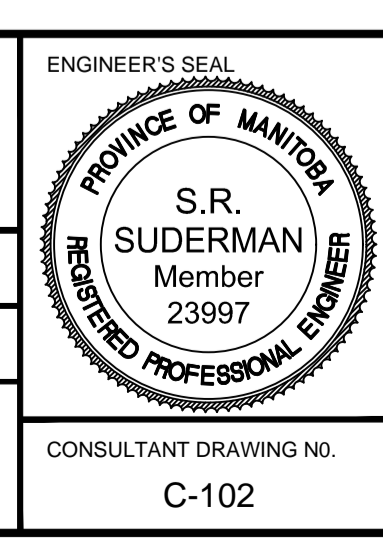
| NO. | REVISIONS | DATE | BY |
|-----|----------------------------------|----------|--------|
| 2 | ISSUED FOR TENDER | 19.01.25 | S.R.S. |
| 1 | ISSUED FOR U/G STRUCTURES REVIEW | 18.12.12 | S.R.S. |
| 0 | ISSUED FOR 98% REVIEW | 18.11.08 | S.R.S. |

Stantec
500 - 311 Portage Avenue, Winnipeg MB
www.stantec.com

| | | | |
|-------------|-----------|-------------|--------|
| DESIGNED BY | T.G./J.D. | CHECKED BY | D.M. |
| DRAWN BY | M.K. | APPROVED BY | S.R.S. |

HOR. SCALE: 1:500
VERTICAL:

DATE 2018.11.08



THE CITY OF WINNIPEG
PUBLIC WORKS DEPARTMENT
ENGINEERING DIVISION

2019 REGIONAL STREET RENEWAL PROGRAM
MAIN STREET
FROM SEMPLE AVE TO MCKAY DR
CONCRETE PAVEMENT, CURB & SIDEWALK REPAIRS

SHEET OF 3 25
CAD FILE DRAWING NUMBER 07620c-101-920.dwg
CITY DRAWING NUMBER P-3502-3

CONSULTANT DRAWING NO. C-102

ENGINEERS GEOSCIENTISTS MANITOBA
Certificate of Authorization
Stantec Consulting Ltd.
No. 1301