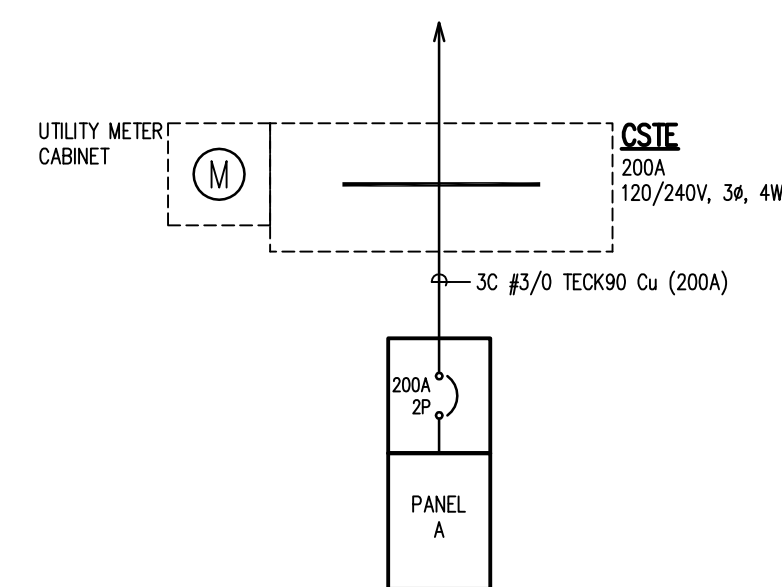


ELECTRICAL SYMBOL LEGEND		ELECTRICAL DOCUMENT LIST
<p>NOTE: NOT ALL SYMBOLS SHOWN ON THIS LEGEND ARE NECESSARILY USED ON THIS PROJECT.</p> <p>EQUIPMENT CONNECTIONS AND CONTROLS</p> <p>⊙ DIRECT CONNECTION - 120 OR 208V AS SPECIFIED</p> <p>⊙⊔ DIRECT CONNECTION - 120 OR 208V C/W UNFUSED DISCONNECT SWITCH AS SPECIFIED</p> <p>⊙⊔⊕ DIRECT CONNECTION - 120 OR 208V C/W FUSED DISCONNECT SWITCH AS SPECIFIED</p> <p>⊙ MOTOR CONNECTION AS SPECIFIED</p> <p>⊙⊔ MOTOR CONNECTION C/W UNFUSED DISCONNECT SWITCH</p> <p>⊔ HAND DRYER</p> <p>⊔ THERMOSTAT PROVIDED AND WIRED BY ELECTRICAL</p> <p>⊔ THERMOSTAT PROVIDED BY MECHANICAL AND WIRED BY ELECTRICAL</p> <p>⊔ POWER ACTIVATED DOOR EXIT BUTTON SUPPLIED BY DOOR HARDWARE SUPPLIER, WIRED BY ELECTRICAL</p> <p>SP RECESSED MOUNTED ELECTRICAL PANEL - 'SP' DENOTES PANEL DESIGNATION</p> <p>SP SURFACE MOUNTED ELECTRICAL PANEL - 'SP' DENOTES PANEL DESIGNATION</p> <p>GENERAL POWER</p> <p>⊕ 15A, U-GROUND DUPLEX RECEPTACLE</p> <p>⊕ (5-20R) T-SLOT U-GROUND DUPLEX RECEPTACLE</p> <p>⊕ 15A, U-GROUND DUPLEX RECEPTACLE - MOUNTED ABOVE COUNTER</p> <p>POWER DISTRIBUTION</p> <p>⊔ DISCONNECT SWITCH</p> <p>⊔ MOLDED CASE CIRCUIT BREAKER</p> <p>⊕ KW/HR METER</p> <p>ELECTRIC HEATING</p> <p>BBH1 ELECTRIC BASEBOARD HEATER, TYPE 'BBH1' AS SPECIFIED</p> <p>FFH1 RECESSED MOUNTED - ELECTRIC FORCE FLOW HEATER, TYPE 'FFH1' AS SPECIFIED</p> <p>UH1 ELECTRIC UNIT HEATER, TYPE 'UH1' AS SPECIFIED</p> <p>LIGHTING</p> <p>⊔ LINEAR FLUORESCENT LUMINAIRE, TYPE 'A' AS SPECIFIED. HATCHING DENOTES CONNECTED TO EMERGENCY/NIGHT LIGHTING CIRCUIT</p> <p>⊕ CEILING MOUNTED LUMINAIRE, TYPE 'A' AS SPECIFIED</p> <p>⊕ WALL MOUNTED LUMINAIRE, TYPE 'A' AS SPECIFIED</p> <p>⊕ DOUBLE SURFACE MOUNTED EMERGENCY LIGHTING REMOTE HEADS, TYPE 'BU-1' INDICATES BATTERY BANK FED FROM</p> <p>⊕ WALL MOUNTED SINGLE FACED EXIT LIGHT AND DIRECTIONAL ARROWS AS INDICATED. SHADED AREAS DENOTE DIRECTION OF FACE OF EXIT SIGN.</p> <p>⊕ CEILING MOUNTED DOUBLE FACED EXIT LIGHT AND DIRECTIONAL ARROWS AS INDICATED. SHADED AREAS DENOTE DIRECTION OF FACE OF EXIT SIGN.</p> <p>⊕ CEILING MOUNTED SINGLE FACED EXIT LIGHT AND DIRECTIONAL ARROWS AS INDICATED. SHADED AREAS DENOTE DIRECTION OF FACE OF EXIT SIGN.</p> <p>LIGHTING CONTROL</p> <p>\$\$\$ ONE, TWO, THREE AND FOUR GANG SINGLE POLE TOGGLE SWITCHES</p> <p>3 3-WAY SWITCH</p> <p>⊕ CEILING MOUNTED OCCUPANCY SENSOR, TYPE 'A' AS SPECIFIED</p> <p>⊕ PHOTO ELECTRIC CONTROL</p> <p>⊕ REMOTE LED DRIVER</p> <p>MISCELLANEOUS</p> <p>--- INDICATES CONDUIT</p> <p>⊔ (TYP.) ELECTRICAL DRAWING NOTES</p> <p>COMMUNICATIONS</p> <p>▽ DATA OUTLET - WALL MOUNTED OR MOUNTED ABOVE COUNTER</p> <p>◇ DATA OUTLET - FLUSH CEILING MOUNTED UNLESS NOTED OTHERWISE</p> <p>⊔ DATA OUTLET - FLUSH FLOOR MOUNTED</p>		<p>E1.0 ELECTRICAL SYMBOL LEGEND, DRAWING LIST & SCHEDULES</p> <p>EL2.0 MAIN FLOOR - LIGHTING LAYOUT</p> <p>EP2.0 MAIN FLOOR - POWER & SYSTEMS LAYOUT</p> <p>E3.0 ELECTRICAL SPECIFICATION</p> <p>ME1.0 MECHANICAL AND ELECTRICAL DATA SHEETS</p> <p>ABBREVIATIONS</p> <p>A - AMPERES AFF - ABOVE FINISHED FLOOR BB - BASEBOARD HEATER C - CONDUCTOR CLG - CEILING MOUNTED CNDT - CONDUIT DB - DIRECT BURIED EC - EMPTY CONDUIT EF - EXHAUST FAN EH - ELECTRIC HEATER FF - FORCE FLOW GFI - GROUND FAULT CIRCUIT INTERRUPTER HP - HORSEPOWER INT - INTERLOCK kVA - KILO VOLT-AMPERES kW - KILOWATTS LTG - LIGHTING MTD - MOUNTED MTG - MOUNTING NIC - NOT IN CONTRACT NTS - NOT TO SCALE PNL - PP POWER PANEL QP - QUAD PLEX SM - SURFACE MOUNTED TEL - TELEPHONE TYP - TYPICAL UC - UNDER COUNTER V - VOLT WL - WET LOCATION WP - WEATHERPROOF</p>

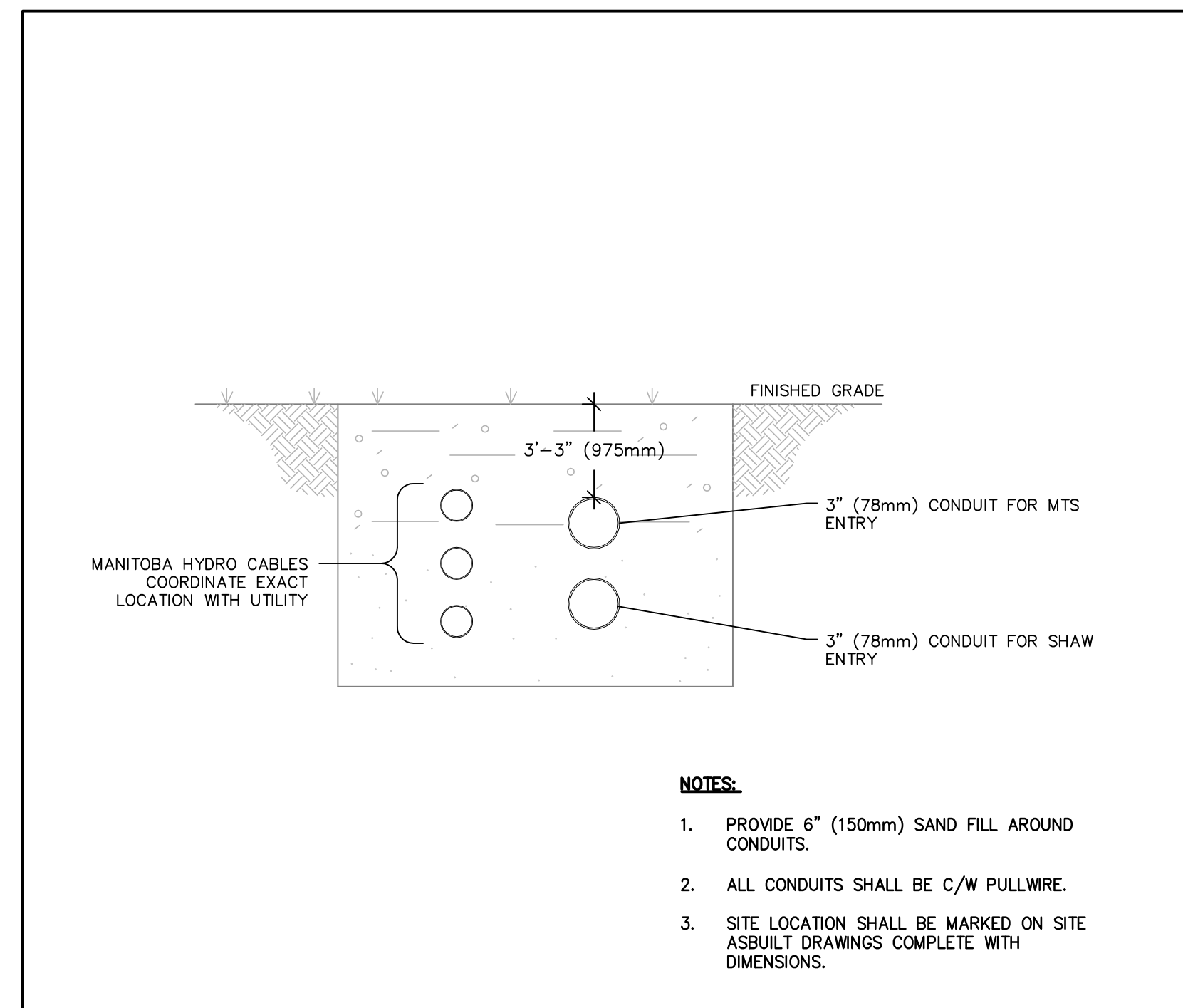
PANEL	A (C/W MAIN BREAKER)	FED FROM:	MH SERVICE					
VOLTAGE:	120/240V/1Ø/3W	225A MAINS	MOUNTING: SURFACE POWER: NORMAL					
DESCRIPTION	LOAD	BRKR	CCT	PHASE	CCT	BRKR	LOAD	DESCRIPTION
SPARE	20	1	A	21	25	2000		DWHT-1
MECH RM - RECEPTACLES - 1R	400	20	3	A	23	20	1000	MENS WR - HAND DRYER
WOMENS WASHRM - RECEPTACLES - 1R	400	20	4	B	24	20	1000	UTR - HAND DRYER
UTR - RECEPTACLES - 1R	400	20	5	A	25	20	1000	WOMENS WR - HAND DRYER
MECH RM - UNIT HEATER	1500	20	6	B	26	20	1000	HC-2
WOMENS WASHRM - FORCE FLOW	2500	30	7	A	27	20	1500	CHANGE ROOM REC
UTR - FORCE FLOW	1000	15	8	B	28	30	1500	WALL MTD. LTG.
MENS WASHRM - FORCE FLOW	2500	30	9	A	29	30	1500	DOOR OPERATOR
WASHROOM DOOR OPERATORS	1000	20	10	B	30			SPACE
WASHROOM AND MECH ROOM LTG	1250	15	11	A	31	15	1000	SPACE
COVERED PATIO LTG	720	15	12	B	32	15		SPACE
HRV-1	15	18	13	A	33			SPACE
PHC-1	7000	80	14	B	34			SPACE
			15	A	35			SPACE
			16	B	36	15		SPACE
			17	A	37	15		SPACE
			18	B	38	15		SPACE
			19	A	39	20		SPACE
			20	B	40	20		SPACE
LIGHTING	0.90	ELECTRIC WATER HEATING	2.00	MOTORS		ELECTRIC RAMP HEATING		
PARKING RECEPTACLES		AIR CONDITIONING		MISCELLANEOUS LOADS	9.60	LAUNDRY EQUIPMENT		
ELECTRIC HEATING	32.00	ELEVATOR MOTORS		ELECTRIC BOILER		KITCHEN EQUIPMENT		
							TOTAL (kVA)	44.50

NOTE: PANELBOARD SHALL BE SERVICE ENTRANCE RATED.

TO MANITOBA HYRO U/G SERVICE

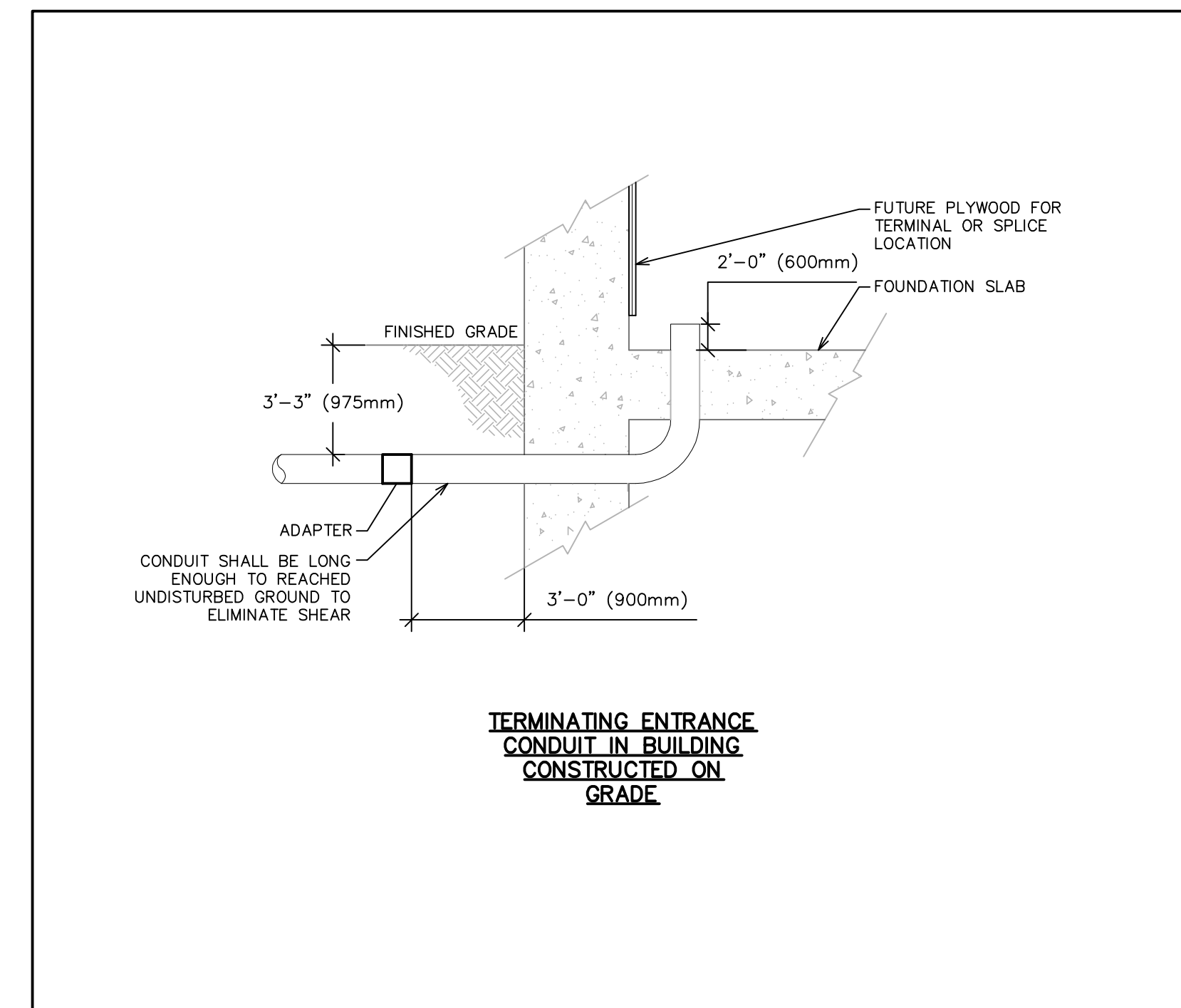


1 SINGLE-LINE DIAGRAM
E1.0 SCALE: N.T.S.



- NOTES:**
1. PROVIDE 6" (150mm) SAND FILL AROUND CONDUITS.
 2. ALL CONDUITS SHALL BE C/W PULLWIRE.
 3. SITE LOCATION SHALL BE MARKED ON SITE ASSULT DRAWINGS COMPLETE WITH DIMENSIONS.

1 BURIED POWER CABLES/COMMUNICATION CONDUIT DETAIL
E1.0 SCALE: N.T.S.



TERMINATING ENTRANCE CONDUIT IN BUILDING CONSTRUCTED ON GRADE

3 FUTURE TELECOMMUNICATIONS CONDUIT ENTRY DETAIL
E1.0 SCALE: N.T.S.