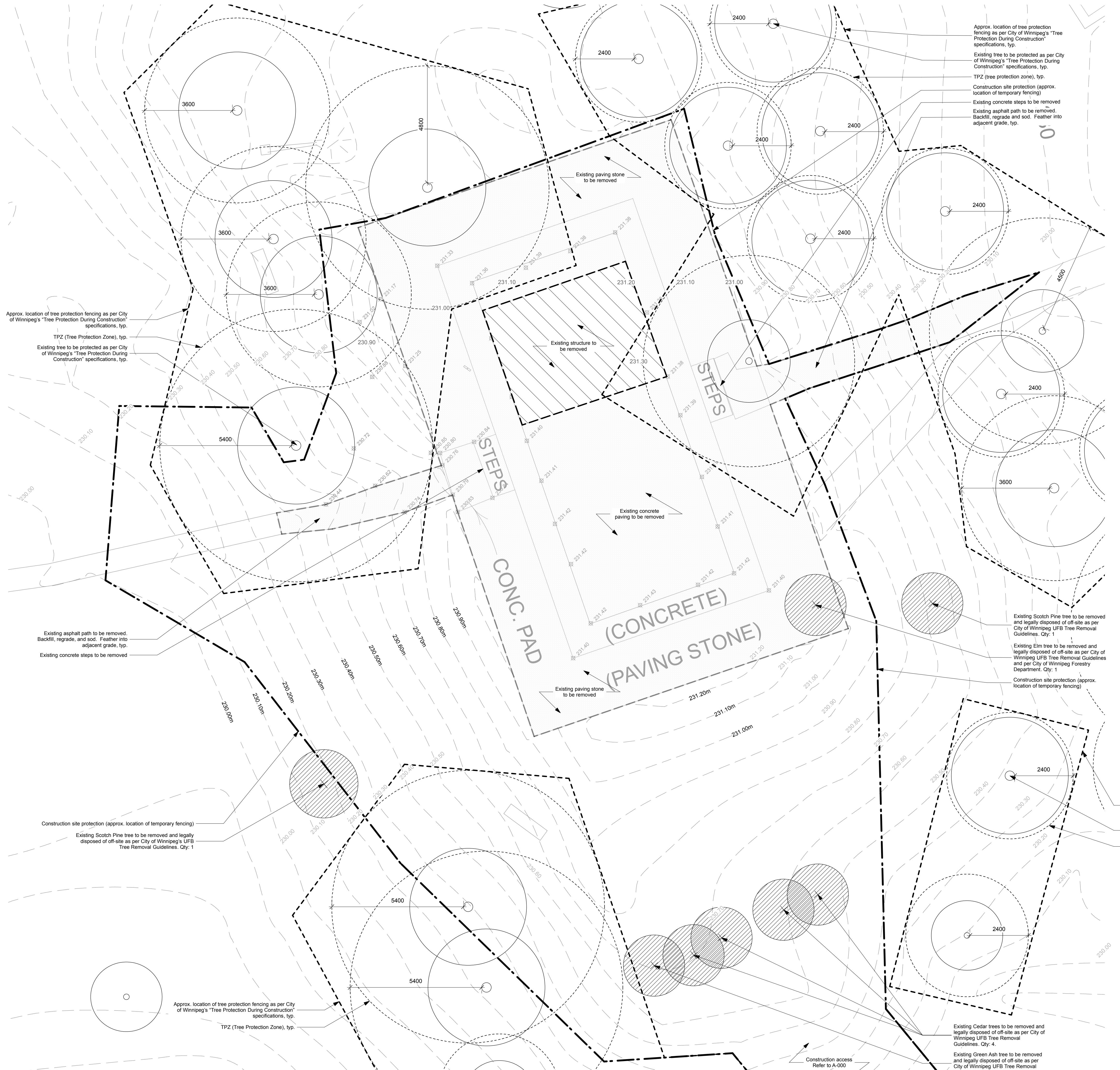


Owner

City of Winnipeg
185 King Street
Winnipeg, Manitoba
R3B 1J1
(204) 794-4418

Rev. No.	Date	Revision Notes
0.	2018.07.27	Issued for Construction



REMOVAL NOTES:

- All existing trees, shrubs, sidewalks, curbs, sod, utilities and paving to be protected (unless otherwise noted) during construction to City of Winnipeg Standards. Contractor to make good all area damaged during construction both on and off-site to City of Winnipeg standards at the Contractor's cost.
- If power equipment is to be used for excavation on this project, the Contractor must:
 - Notify all utilities of the proposed location of excavation.
 - Take precaution to avoid damage to all utilities.

REMOVALS LEGEND:

- Existing tree to be protected for the duration of construction. Refer to current City of Winnipeg "Tree Protection During Construction" specifications.
- Existing tree to be removed and legally disposed of off-site. Refer to current City of Winnipeg UFB Tree Removal Guidelines.
- Extent of Removal: Paving
- Extent of Removal: Structure
- Existing Contours
- Limit of Work - Refer to A-000
- Tree Protection Fencing (as per City of Winnipeg's "Tree Protection During Construction" Specifications. Refer to A-000)
- TPZ (Tree Protection Zone)
- Existing Geodetic Elevation

Approx. location of tree protection fencing as per City of Winnipeg's "Tree Protection During Construction" specifications, typ.
TPZ (Tree Protection Zone), typ.
Existing tree to be protected as per City of Winnipeg's "Tree Protection During Construction" specifications, typ.

Existing asphalt path to be removed. Backfill, regrade, and sod. Feather into adjacent grade, typ.
Existing concrete steps to be removed

Construction site protection (approx. location of temporary fencing)
Existing Scotch Pine tree to be removed and legally disposed of off-site as per City of Winnipeg's UFB Tree Removal Guidelines. Qty: 1

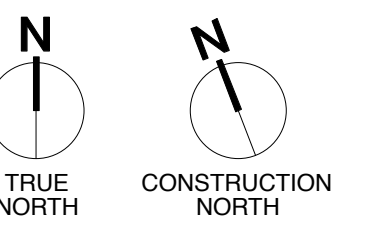
Approx. location of tree protection fencing as per City of Winnipeg's "Tree Protection During Construction" specifications, typ.
TPZ (Tree Protection Zone), typ.

Approx. location of tree protection fencing as per City of Winnipeg's "Tree Protection During Construction" specifications, typ.
Existing tree to be protected as per City of Winnipeg's "Tree Protection During Construction" specifications, typ.
TPZ (tree protection zone), typ.
Construction site protection (approx. location of temporary fencing)
Existing concrete steps to be removed
Existing asphalt path to be removed. Backfill, regrade and sod. Feather into adjacent grade, typ.

Existing Scotch Pine tree to be removed and legally disposed of off-site as per City of Winnipeg UFB Tree Removal Guidelines. Qty: 1
Existing Elm tree to be removed and legally disposed of off-site as per City of Winnipeg UFB Tree Removal Guidelines and per City of Winnipeg Forestry Department. Qty: 1
Construction site protection (approx. location of temporary fencing)

Approx. location of tree protection fencing as per City of Winnipeg's "Tree Protection During Construction" specifications, typ.
Existing tree to be protected as per City of Winnipeg's "Tree Protection During Construction" specifications, typ.
TPZ (Tree Protection Zone), typ.

Existing Cedar trees to be removed and legally disposed of off-site as per City of Winnipeg UFB Tree Removal Guidelines. Qty: 4.
Existing Green Ash tree to be removed and legally disposed of off-site as per City of Winnipeg UFB Tree Removal Guidelines. Qty: 1



This drawing must not be scaled. The contractors shall verify all dimensions and other data on site prior to commencement of work. Discrepancies, errors, and omissions are to be reported to Public City Architecture Inc. prior to proceeding with the Work.

Drawings and specifications as instruments of service are the property of Public City Architecture Inc. and when made, must bear their name. All prints to be returned to Public City Architecture Inc. upon request.

Project
Crescent Drive Park Pavilion

Drawing
Removals Plan

Drawn By TL	Reviewed By LW
Scale 1:75	Drawing No. L-100

Date 2018.07.27	Project No. 1448
--------------------	---------------------