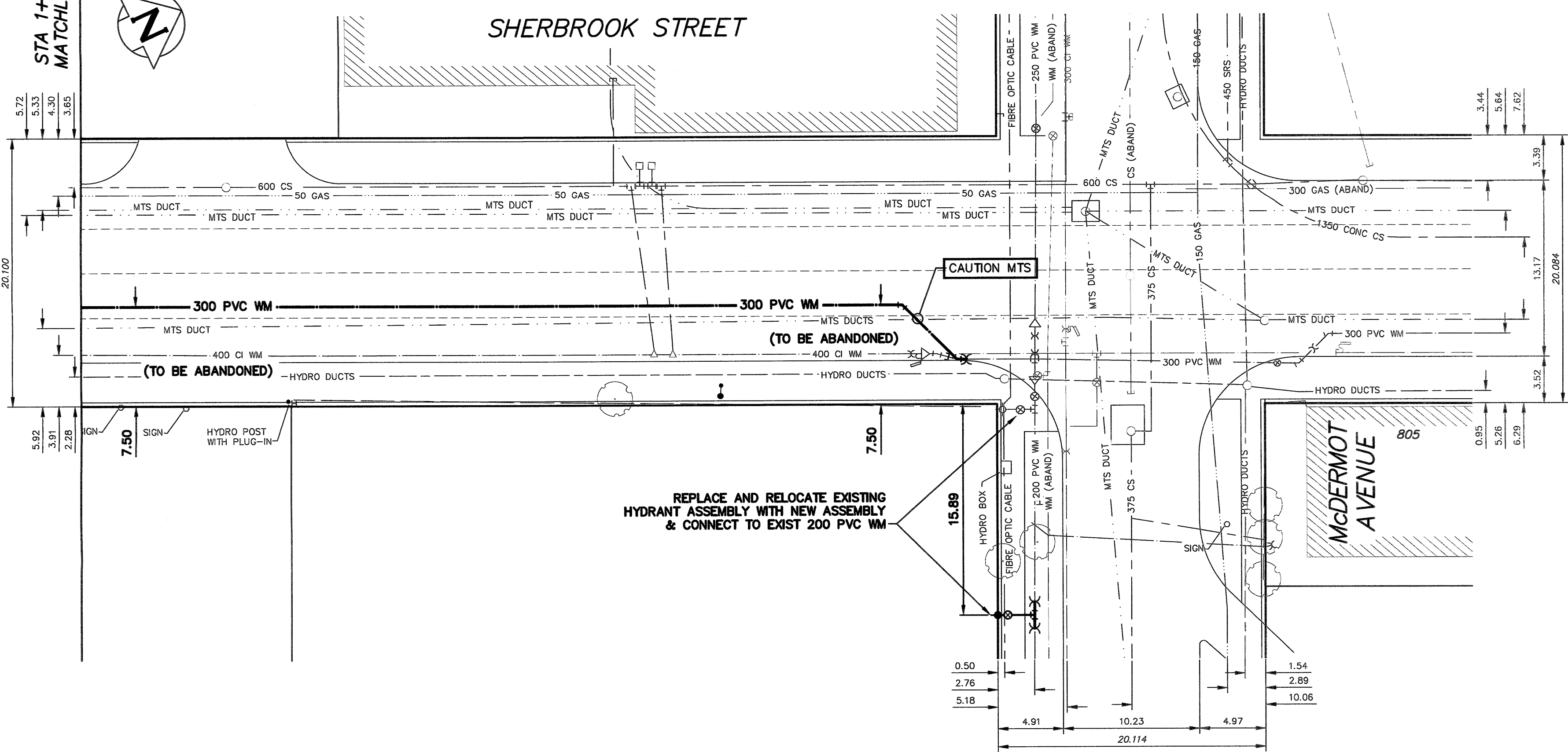
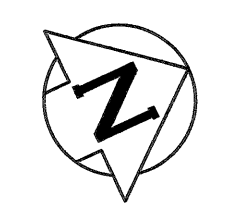


NOTE: CHAINAGES SHOWN ARE ALONG E. R. OF SHERBROOK STREET

STA 1+75 MATCHLINE

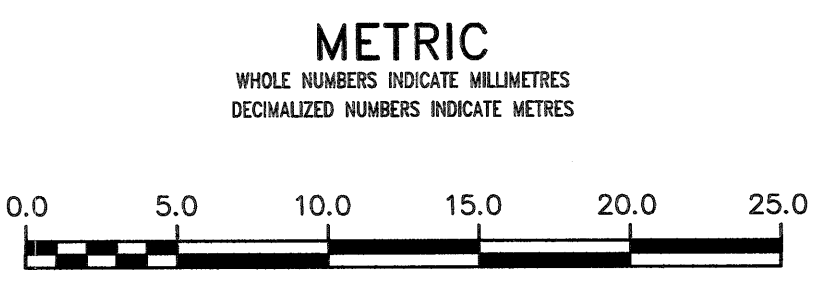


REPLACE AND RELOCATE EXISTING HYDRANT ASSEMBLY WITH NEW ASSEMBLY & CONNECT TO EXIST 200 PVC WM

PROPERTY LIMITS DELINEATION
 DELINEATION OF PROPERTY LIMITS AS SHOWN ON THIS DWG DOES NOT REPRESENT A "LEGAL SURVEY". KGS GROUP MAKES NO REPRESENTATION OR WARRANTY AS TO THE ACCURACY OF PROPERTY LIMITS DELINEATED ON THIS DWG, NOR ON THE DIMENSIONAL ACCURACY OF DWG FEATURES RELATIVE TO THOSE PROPERTY LIMITS.

NOTE: ALL VALVES TO BE INSTALLED COUNTERCLOCKWISE TO CLOSE

APEGM
 Certificate of Authorization
 KGS Group
 No. 245



WARNING
 IF POWER EQUIPMENT OR EXPLOSIVES ARE TO BE USED FOR EXCAVATION ON THIS PROJECT THE CONTRACTOR MUST:
 1) NOTIFY THE GAS COMPANY OF THE PROPOSED LOCATION OF EXCAVATION.
 2) TAKE PRECAUTION TO AVOID DAMAGE TO GAS COMPANY INSTALLATIONS.
 SEE PROVINCIAL REGULATION 21072 FOR DETAILS

LOCATION APPROVED UNDERGROUND STRUCTURES
 SUPV. U/G STRUCTURES COMMITTEE DATE
 NOTE:
 LOCATION OF UNDERGROUND STRUCTURES AS SHOWN ARE BASED ON THE BEST INFORMATION AVAILABLE BUT NO GUARANTEE IS GIVEN THAT ALL EXISTING UTILITIES ARE SHOWN OR THAT THE GIVEN LOCATIONS ARE EXACT. CONFIRMATION OF EXISTENCE AND EXACT LOCATION OF ALL SERVICES MUST BE OBTAINED FROM THE INDIVIDUAL UTILITIES BEFORE PROCEEDING WITH CONSTRUCTION.

B.M. ELEV.	NO.	ISSUED FOR CONSTRUCTION	DATE	BY
	0	ISSUED FOR CONSTRUCTION	18/02/15	Reo

KGS GROUP CONSULTING ENGINEERS
 DESIGNED BY: TLE
 CHECKED BY: [Signature]
 DRAWN BY: GEL
 APPROVED BY: [Signature]
 SCALE: HORIZONTAL 1:250, VERTICAL 1:50
 RELEASED FOR CONSTRUCTION: [Signature]
 DATE: 2018 02 14

ENGINEER'S SEAL

 CONSULTANT DRAWING NUMBER: 17-0107-024_D-14983

THE CITY OF WINNIPEG WATER AND WASTE DEPARTMENT ENGINEERING DIVISION
 2018 WATER MAIN RENEWALS
SHERBROOK STREET
 NOTRE DAME AVENUE TO McDERMOT AVENUE
 STA 1+75 TO McDERMOT AVENUE
 SHEET 9 OF 10
 CITY DRAWING NUMBER: D-14983