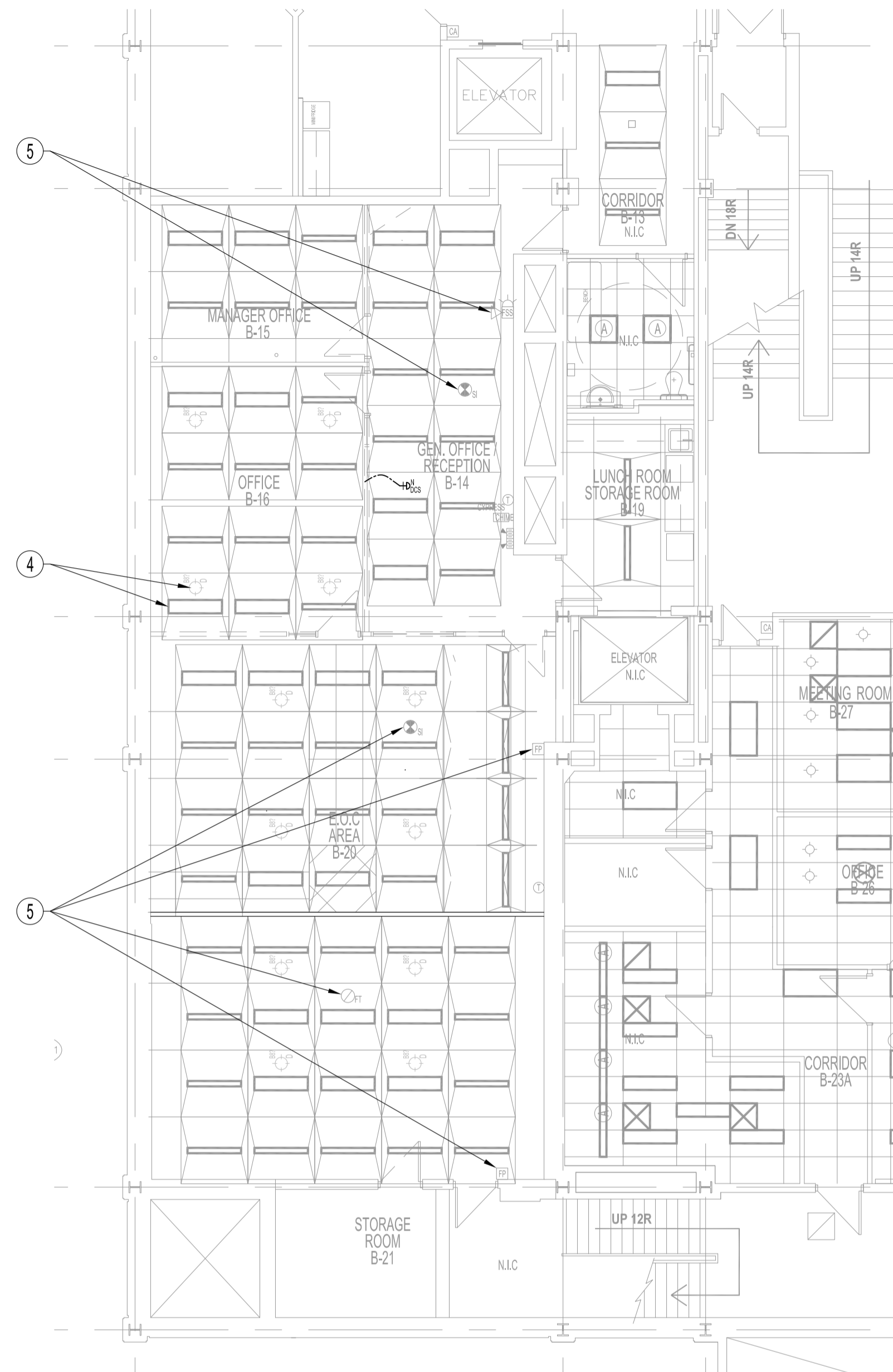
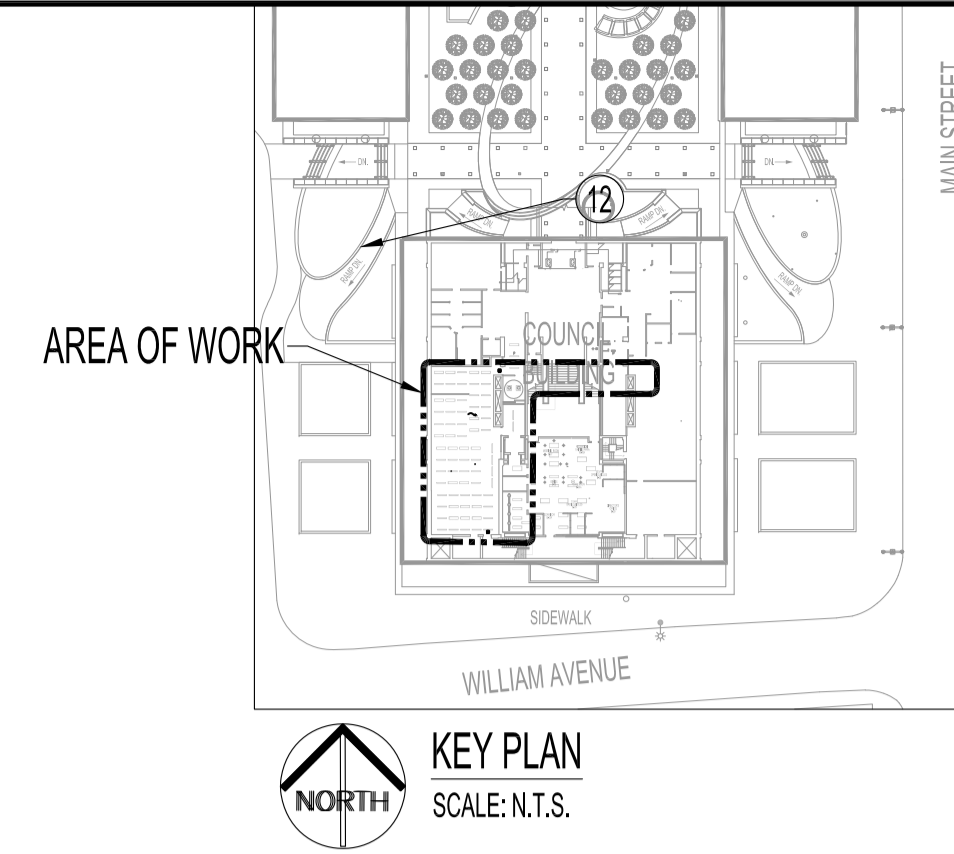


PARTIAL BASEMENT FLOOR PLAN - DEMOLITION
SCALE: 1/8"=1'-0"



PARTIAL BASEMENT REELECTED CEILING PLAN - DEMOLITION
SCALE: 1/8"=1'-0"



KEY PLAN
SCALE: N.T.S.

NOTES:
 THESE DRAWINGS SHALL NOT BE SCALED.
 THE CONTRACTOR SHALL VISIT THE SITE AND SATISFY ONESELF ALL DIMENSIONS, DATUM, AND DETAILED INFORMATION SHOWN ARE CORRECT.
 THE CONTRACTOR IS TO REVIEW AND COORDINATE ALL ARCHITECTURAL, MECHANICAL, ELECTRICAL AND STRUCTURAL DRAWINGS FOR ADDITIONAL OPENINGS THROUGH FLOORS, WALLS, AND CEILINGS FOR DUCT, PIPE & ELECTRICAL RISERS AND ALL OPENINGS NOT SHOWN ON DRAWINGS.
 ALL OPENINGS THROUGH FIRE ASSEMBLIES ARE TO BE FIRE STOPPED AND SEALED WITH ULC APPROVED FIRE STOPPING TO MAINTAIN THE INTEGRITY OF THE FIRE SEPARATION, AND PROVIDE A SMOKE-TIGHT BARRIER.
 ALL PRODUCTS AND MATERIALS TO BE USED AND INSTALLED SHALL CONFORM WITH MANUFACTURER'S SPECIFICATIONS & APPLICABLE CODES.
 THE CONTRACTOR SHALL BE RESPONSIBLE TO PATCH AND MAKE GOOD ALL EXISTING CONSTRUCTION AFFECTED BY THE REMOVAL OF ALL ITEMS FORMING THE PART OF THE RENOVATION WORK.
 WHERE NEW FLOORING AND BASE IS TO BE INSTALLED IN EXISTING AREAS (REFER TO FLOOR PLAN AND ROOM SCHEDULE) THE EXISTING FLOORING SURFACE AND BASE MUST BE REMOVED, UNLESS OTHERWISE NOTED. ALL FLOOR SURFACES SHALL BE PREPARED IN ACCORDANCE TO MANUFACTURER'S RECOMMENDATIONS FOR INSTALLATION OF NEW FLOOR.
 WHERE PAINTING OF EXISTING WALLS IS INDICATED ON THE ROOM SCHEDULE, THESE WALLS MUST BE CLEANED OF ANY EXISTING WALL COVERING, PATCHED & PREPARED TO ACCEPT NEW MATERIAL, UNLESS OTHERWISE NOTED.

POWER AND SYSTEMS DEMOLITION NOTES: "X"

- ALSO SEE NOTES & SPECIFICATIONS.
 REFER TO APPLICABLE RENOVATION DRAWING FOR RELOCATED COMPONENTS.
 ALL ABANDONED CABLES TO BE REMOVED FROM PLENUM SPACES AS REQUIRED BY LATEST CANADIAN ELECTRICAL CODE.
 DO NOT DISTURB OR DISCONNECT ANY WIRING & CABLING IN AREA OF WORK REQUIRED FOR OTHER AREAS.
- REMOVE ALL COMPONENTS WITH DESIGNATION "D" BACK TO SOURCE, UNLESS OTHERWISE NOTED. UNUSED TV COAXIAL CABLE STILL CONNECTED TO SOURCE SHALL BE LABELLED, RECOILED & STORED IN A NEAT FASHION IN THE CEILING SPACE & MAYBE REDEPLOYED.
 - NOTE: CONCRETE CEILING CONSISTS OF ELECTRICAL CELLULAR STEEL FLOOR CELLS CONTAINING TYPE "Q" HEADER DUCTS & TYPE "Q" JACK HEADER DUCTS WITH STANDARD JUNCTION UNITS FOR EVERY CELL. EACH TYPE "Q" HEADER DUCTS & TYPE "Q" JACK HEADER DUCTS HAVE A SET OF PROVISION FOR SIGNAL, TELEPHONE & POWER.
 - REMOVE ELECTRIC BASE BOARD HEATERS & CONNECTED THERMOSTAT BACK TO SOURCE.
 - FIBRE OPTIC & WALL CABINET TO REMAIN.
 - REMOVE ALL EXISTING CEILING LUMINARIES & LIGHT SWITCHES IN EOC AREAS- INCLUDES LUNCH ROOM B-19 & STORAGE RM. B-21 BACK TO SOURCE.
 - ALL FIRE DETECTION/PREVENTION DEVICES TO REMAIN (E.G., CEILING HEAT DETECTORS, SMOKE DETECTORS, FIRE ALARM PULL STATIONS, COMBINATION HORN STROBES, EMERGENCY LIGHTING).

No.	REVISION/DESCRIPTION	BY	DATE
0	ISSUED FOR 60% CLIENT REVIEW	DTA	2018.08.17

DRAWN DATE	CHECKED USER	DESIGNED DATE	APPROVED
2018.07.26			

THE CITY OF WINNIPEG
 PLANNING, PROPERTY AND
 DEVELOPMENT DEPARTMENT
 MUNICIPAL ACCOMMODATIONS DIVISION
 3-65 GARRY STREET, R3C 4K4

PROJECT
 COUNCIL BUILDING
 EMERGENCY OPERATIONS CENTRE RENOVATIONS

510 MAIN STREET

SHEET TITLE
 PARTIAL BASEMENT FLOOR PLAN
 DEMOLITION AND RENOVATION
 POWER AND SYSTEMS

SCALE	PROJECT No:	SHEET No:
AS SHOWN	2018-010	E2