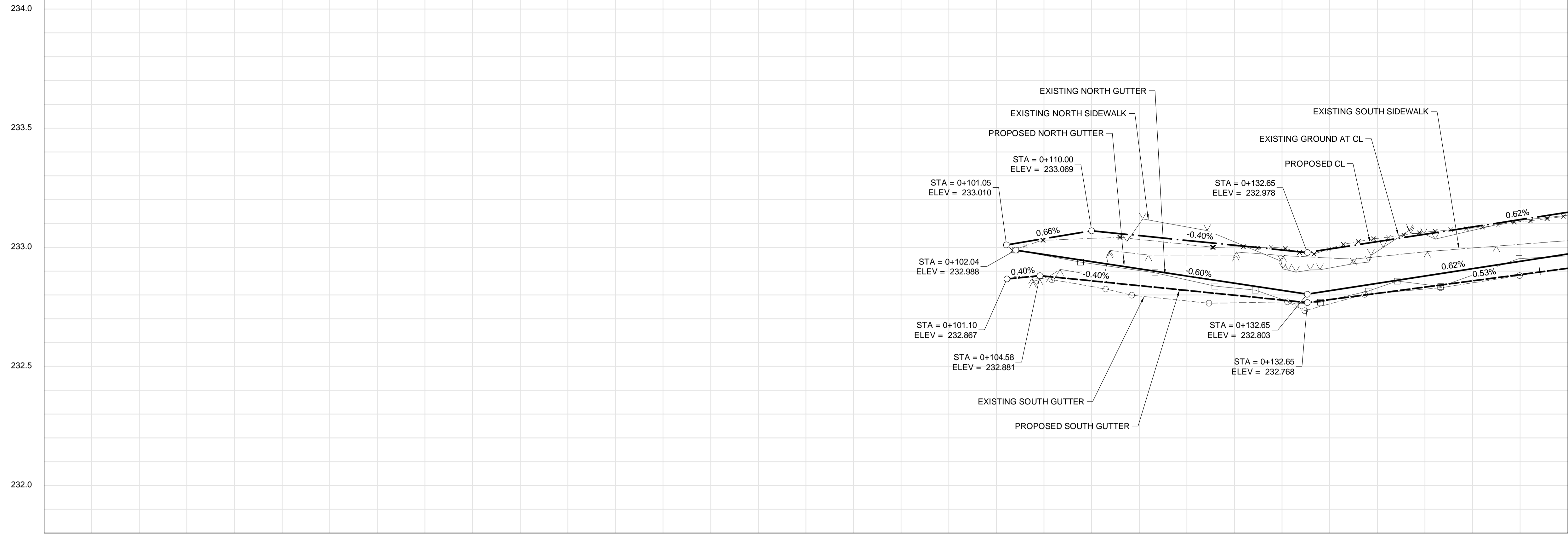


ELLICE AVENUE



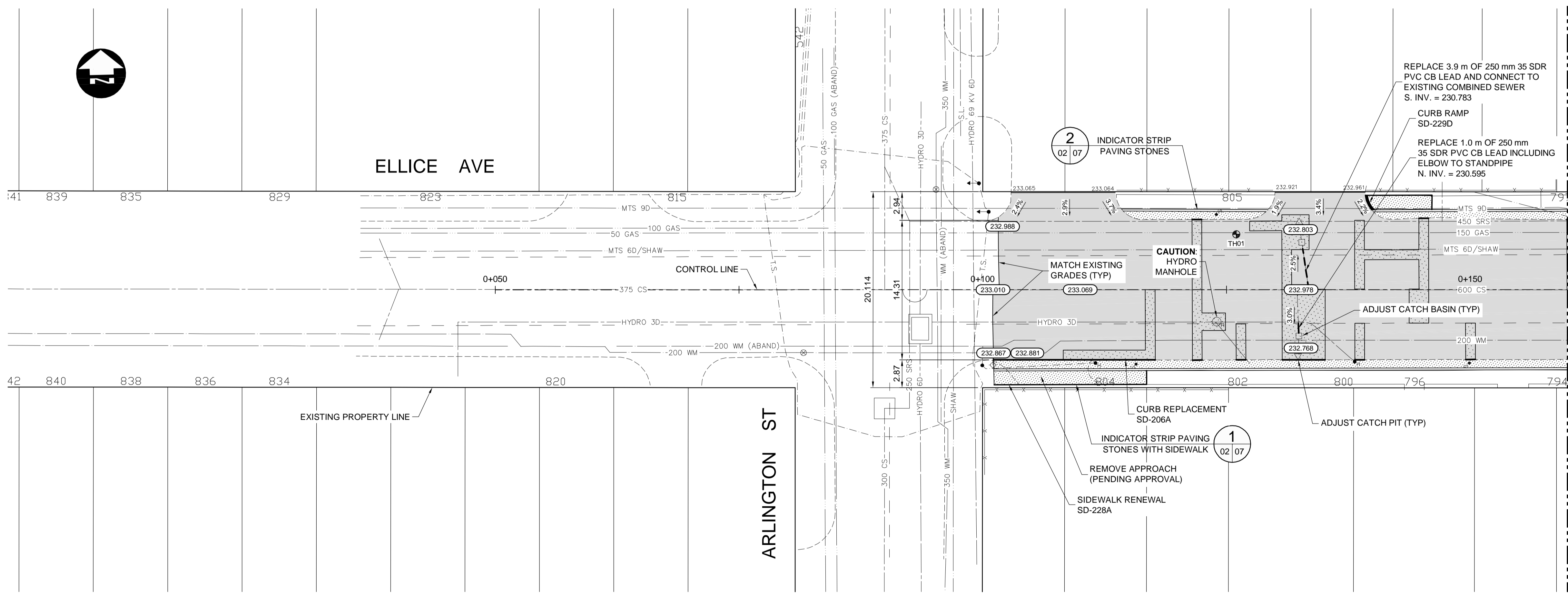
- CONSTRUCTION NOTES:**
1. ALL WORK AND MATERIALS TO BE IN ACCORDANCE WITH LATEST REVISION OF THE CITY OF WINNIPEG STANDARD CONSTRUCTION SPECIFICATIONS.
 2. ALL DIMENSIONS ARE TO BACK OF CURB.
 3. ISOLATE MISCELLANEOUS ITEMS IN NEW CONCRETE WORKS AS PER SD-228C.
 4. LEGAL PLAN AND UNDERGROUND INFORMATION FROM CITY OF WINNIPEG LBIS. CONTRACTOR TO VERIFY ALL UNDERGROUNDS IN THE FIELD.
 5. CONTRACTOR TO TAKE PRECAUTIONARY STEPS TO AVOID DAMAGE FROM CONSTRUCTION ACTIVITIES TO TREES WITHIN THE LIMITS OF CONSTRUCTION.
 6. LOCATION OF EXISTING SERVICES TO BE CONFIRMED IN THE FIELD BY THE CONTRACTOR.
 7. CB LEADS TO BE INSTALLED AT MIN. 1.0% SLOPE OR AS DIRECTED BY CONTRACT ADMINISTRATOR.
 8. LIMITS OF CURB AND SIDEWALK RENEWAL TO BE FINALIZED IN THE FIELD BY THE CONTRACT ADMINISTRATOR.
 9. LIMITS OF BOULEVARD GRADING TO BE FINALIZED IN THE FIELD BY THE CONTRACT ADMINISTRATOR.
 10. ADJUST ALL WATER VALVES, MANHOLES, CATCH BASINS AND CATCH PITS TO GRADE.
 11. ALL EXISTING LONG WATER SERVICES TO BE INSULATED AS PER SD-018 (AS REQUIRED).
 12. PAVEMENT REPAIRS SHOWN ARE ONLY REPRESENTATIVE APPROXIMATION OF TENDERED QUANTITIES.
 13. ALL PRIVATE WALKWAYS TO BE ADJUSTED TO NEW SIDEWALK OR TOP OF CURB ELEVATION, AS REQUIRED.
 14. MODIFIED BARRIER CURB TO BE CONSTRUCTED AT ALL INTERSECTION RADI AND BACK LANE RADI.
 15. LAMP STANDARDS, HYDRO POLES AND ANCHORS THAT REQUIRE TEMPORARY SUPPORT, REMOVAL OR REPLACEMENT, TO BE DONE SO AT THE EXPENSE OF THE CONTRACTOR, AS NECESSARY.
 16. CONTRACTOR TO CONFIRM LOCATION AND LIMITS OF SEWER REPAIRS BY PERFORMING VIDEO INSPECTION AND REVIEWING WITH THE CONTRACT ADMINISTRATOR PRIOR TO CONSTRUCTION.
 17. SEE SHEET 7 FOR TYPICAL SECTION.

TESTHOLE COORDINATES
 TH01: N = 5528373.9735 E = 631557.1620

METRIC
 WHOLE NUMBERS INDICATE MILLIMETRES
 DECIMALIZED NUMBERS INDICATE METRES

WARNING
 IF POWER EQUIPMENT OR EXPLOSIVES ARE TO BE USED FOR EXCAVATION ON THIS PROJECT THE CONTRACTOR MUST:

1. NOTIFY THE GAS COMPANY OF THE PROPOSED LOCATION OF EXCAVATION.
2. TAKE PRECAUTION TO AVOID DAMAGE TO GAS COMPANY INSTALLATIONS SEE PROVINCIAL REGULATION 210/72 FOR DETAILS.
3. OBTAIN EXCAVATION PERMITS PRIOR TO CONSTRUCTION.



HYDRANT	CONCRETE	WATERMAIN	150 WM
VALVE	ASPHALT	LAND DRAINAGE SEWER	300 LDS
MANHOLE	SIDEWALK	WASTE WATER SEWER	250 WWS
CATCH BASIN	PAVING STONES	HYDRANT	
CATCH PIT	PROPERTY LINE	VALVE	
150 WM	ELEVATION	PROPERTY LINE	(232.000)
300 LDS	TRAFFIC SIGNAL	TRAFFIC SIGNAL	
250 WWS	SURVEY BAR	SURVEY BAR	
HYDRO	CURB RAMP	CURB RAMP	
MTS	DETECTABLE WARNING	DETECTABLE WARNING	
100 GAS	SURFACE TILE (SD-229AA)	SURFACE TILE (SD-229AA)	
EXISTING	LEGEND-PLAN	PROPOSED	EXISTING

UNDERGROUND STRUCTURES	B.M. ELEV.
SUPPLY, U/G STRUCTURES	DATE
0	ISSUED FOR TENDER
NO.	REVISIONS

DESIGNED BY	TJH
DRAWN BY	TJH
CHECKED BY	TS
APPROVED BY	TJP
HOR. SCALE	1:250
VERTICAL	1:10

DILLON CONSULTING

RELEASED FOR CONSTRUCTION

DATE

THE CITY OF WINNIPEG PUBLIC WORKS DEPARTMENT

ELLICE AVENUE REHABILITATION
 ARLINGTON STREET TO MARYLAND STREET

ELLICE AVENUE - PLAN-PROFILE
 (START TO STA. 0+160)

CITY DRAWING NUMBER: P-3505-2018-02
 SHEET 02 OF 09
 CONSULTANT DRAWING NUMBER

C:\projects\working_directory\projects_2018\40jph\dms24490\187677-CON-CT-PLAN-PROFILE.dwg