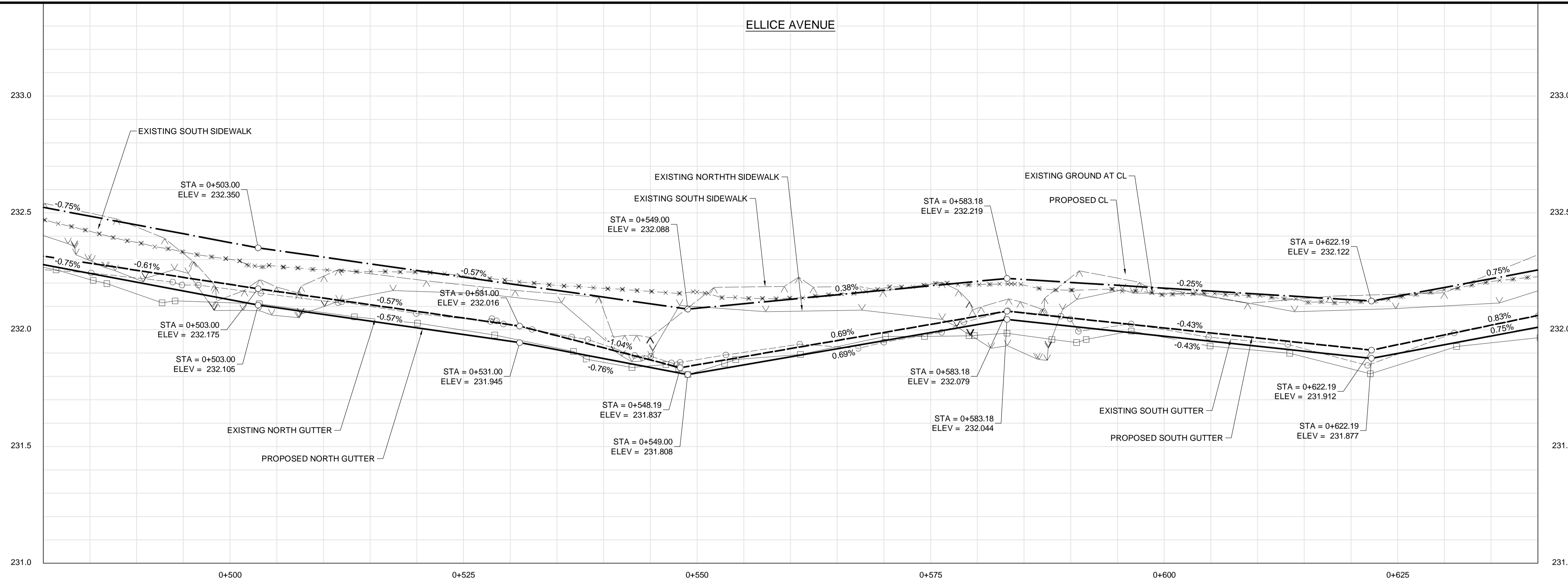


ELLICE AVENUE

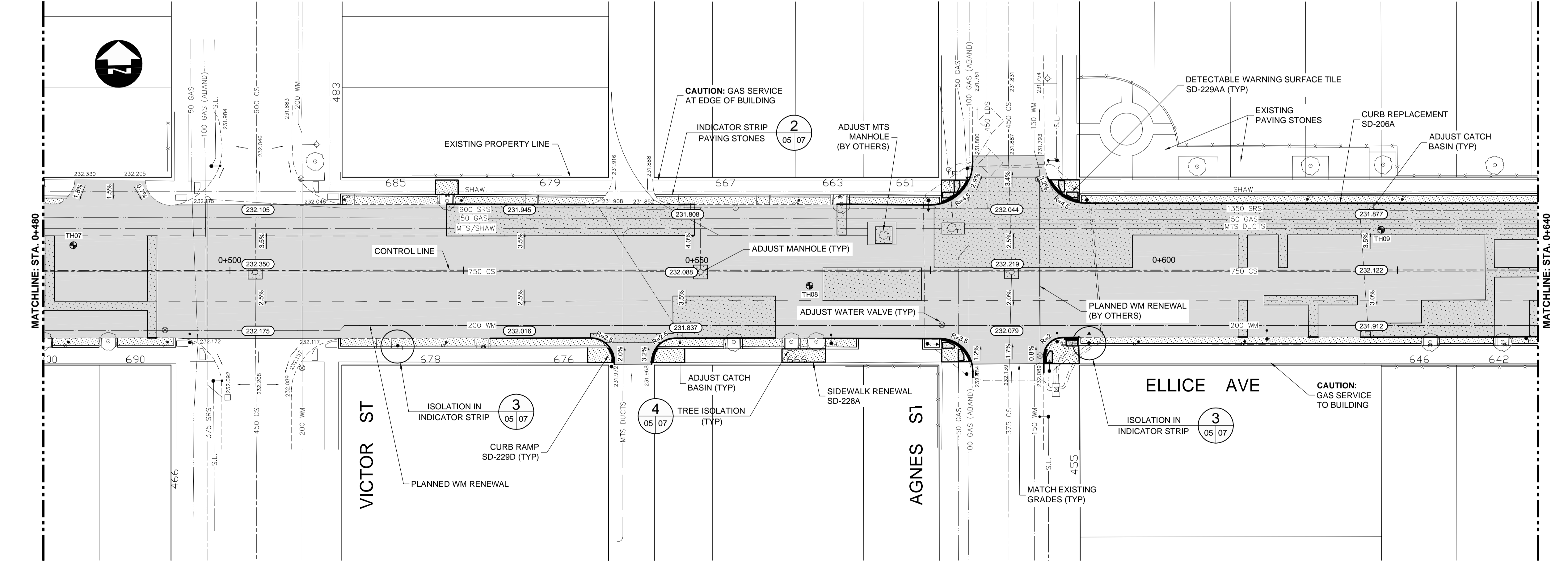


- CONSTRUCTION NOTES:**
- ALL WORK AND MATERIALS TO BE IN ACCORDANCE WITH LATEST REVISION OF THE CITY OF WINNIPEG STANDARD CONSTRUCTION SPECIFICATIONS.
  - ALL DIMENSIONS ARE TO BACK OF CURB.
  - ISOLATE MISCELLANEOUS ITEMS IN NEW CONCRETE WORKS AS PER SD-228C.
  - LEGAL PLAN AND UNDERGROUND INFORMATION FROM CITY OF WINNIPEG LBIS. CONTRACTOR TO VERIFY ALL UNDERGROUNDS IN THE FIELD.
  - CONTRACTOR TO TAKE PRECAUTIONARY STEPS TO AVOID DAMAGE FROM CONSTRUCTION ACTIVITIES TO TREES WITHIN THE LIMITS OF CONSTRUCTION.
  - LOCATION OF EXISTING SERVICES TO BE CONFIRMED IN THE FIELD BY THE CONTRACTOR.
  - CB LEADS TO BE INSTALLED AT MIN. 1.0% SLOPE OR AS DIRECTED BY CONTRACT ADMINISTRATOR.
  - LIMITS OF CURB AND SIDEWALK RENEWAL TO BE FINALIZED IN THE FIELD BY THE CONTRACT ADMINISTRATOR.
  - LIMITS OF BOULEVARD GRADING TO BE FINALIZED IN THE FIELD BY THE CONTRACT ADMINISTRATOR.
  - ADJUST ALL WATER VALVES, MANHOLES, CATCH BASINS AND CATCH PITS TO GRADE.
  - ALL EXISTING LONG WATER SERVICES TO BE INSULATED AS PER SD-018 (AS REQUIRED).
  - PAVEMENT REPAIRS SHOWN ARE ONLY REPRESENTATIVE APPROXIMATION OF TENDERED QUANTITIES.
  - ALL PRIVATE WALKWAYS TO BE ADJUSTED TO NEW SIDEWALK OR TOP OF CURB ELEVATION, AS REQUIRED.
  - MODIFIED BARRIER CURB TO BE CONSTRUCTED AT ALL INTERSECTION RADI AND BACK LANE RADI.
  - LAMP STANDARDS, HYDRO POLES AND ANCHORS THAT REQUIRE TEMPORARY SUPPORT, REMOVAL OR REPLACEMENT, TO BE DONE SO AT THE EXPENSE OF THE CONTRACTOR, AS NECESSARY.
  - CONTRACTOR TO CONFIRM LOCATION AND LIMITS OF SEWER REPAIRS BY PERFORMING VIDEO INSPECTION AND REVIEWING WITH THE CONTRACT ADMINISTRATOR PRIOR TO CONSTRUCTION.
  - SEE SHEET 7 FOR TYPICAL SECTION.

**TESTHOLE COORDINATES**  
 TH07: N = 5528363.0791 E = 631914.2365  
 TH08: N = 5528356.9860 E = 631992.9450  
 TH09: N = 5528361.6117 E = 632054.2584

**METRIC**  
 WHOLE NUMBERS INDICATE MILLIMETRES  
 DECIMAL NUMBERS INDICATE METRES

- WARNING**
- IF POWER EQUIPMENT OR EXPLOSIVES ARE TO BE USED FOR EXCAVATION ON THIS PROJECT THE CONTRACTOR MUST:
- NOTIFY THE GAS COMPANY OF THE PROPOSED LOCATION OF EXCAVATION.
  - TAKE PRECAUTION TO AVOID DAMAGE TO GAS COMPANY INSTALLATIONS SEE PROVINCIAL REGULATION 210/72 FOR DETAILS.
  - OBTAIN EXCAVATION PERMITS PRIOR TO CONSTRUCTION.



C:\projects\working\_directory\projects\_2018\40\jhp\dms24490\187677-CON-CT-PLAN-PROFILE.dwg

EXISTING	LEGEND-PLAN	PROPOSED	EXISTING	LEGEND-PLAN	PROPOSED	EXISTING	LEGEND-PROFILE	PROPOSED
	HYDRANT			CONCRETE			WATERMAIN	
	VALVE			ASPHALT			LAND DRAINAGE SEWER	
	MANHOLE			SIDEWALK			WASTE WATER SEWER	
	CATCH BASIN			PAVING STONES			HYDRANT	
	CATCH PIT			PROPERTY LINE			VALVE	
	WATERMAIN			ELEVATION			PROFILE	
	LAND DRAINAGE SEWER			TRAFFIC SIGNAL			NORTH/WEST GUTTER	
	WASTE WATER SEWER			SURVEY BAR			SOUTH/EAST GUTTER	
	HYDRO			CURB RAMP			NORTH/WEST DITCH	
	M.T.S.			DETECTABLE WARNING SURFACE TILE (SD-229AA)			SOUTH/EAST DITCH	
	GAS							

**UNDERGROUND STRUCTURES**

SUPPLY, U/G STRUCTURES DATE

LOCATION OF UNDERGROUND STRUCTURES AS SHOWN ARE BASED ON THE BEST INFORMATION AVAILABLE, BUT NO GUARANTEE IS GIVEN THAT ALL EXISTING UTILITIES ARE SHOWN OR THAT THE GIVEN LOCATIONS ARE EXACT. CONFIRMATION OF EXISTENCE AND EXACT LOCATION OF ALL SERVICES MUST BE OBTAINED FROM THE INDIVIDUAL UTILITIES BEFORE PROCEEDING WITH CONSTRUCTION.

**B.M. ELEV.**

NO.	REVISIONS	DATE	BY
0	ISSUED FOR TENDER	19/02/04	TJP

**DESIGNED BY** TJH

**DRAWN BY** TJH

**CHECKED BY** TS

**APPROVED BY** TJP

**HOR. SCALE** 1:250

**VERTICAL** 1:10

**ENGINEER'S SEAL**

PROVINCE OF MANITOBA

REGISTERED PROFESSIONAL ENGINEER

T.J. PETERS

2019/02/04

Member 22309

**CONSULTANT PROJECT NUMBER** 18-7677

**THE CITY OF WINNIPEG**  
 PUBLIC WORKS DEPARTMENT

**ELLICE AVENUE REHABILITATION**  
 ARLINGTON STREET TO MARYLAND STREET

**ELLICE AVENUE - PLAN-PROFILE**  
 (STA. 0+480 TO 0+640)

**CITY DRAWING NUMBER** P-3505-2018-05

**SHEET** 05 **OF** 09

**CONSULTANT DRAWING NUMBER**

