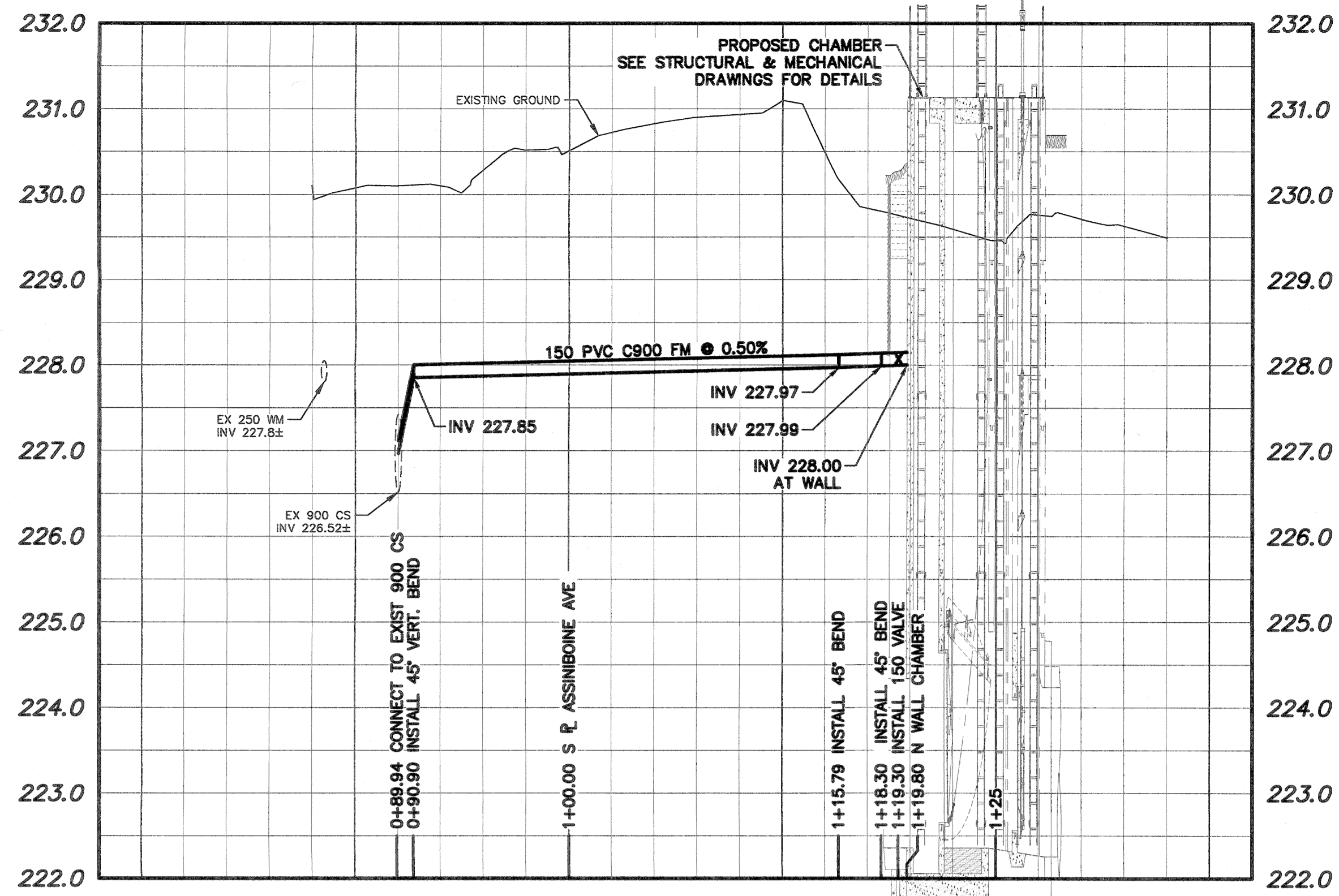
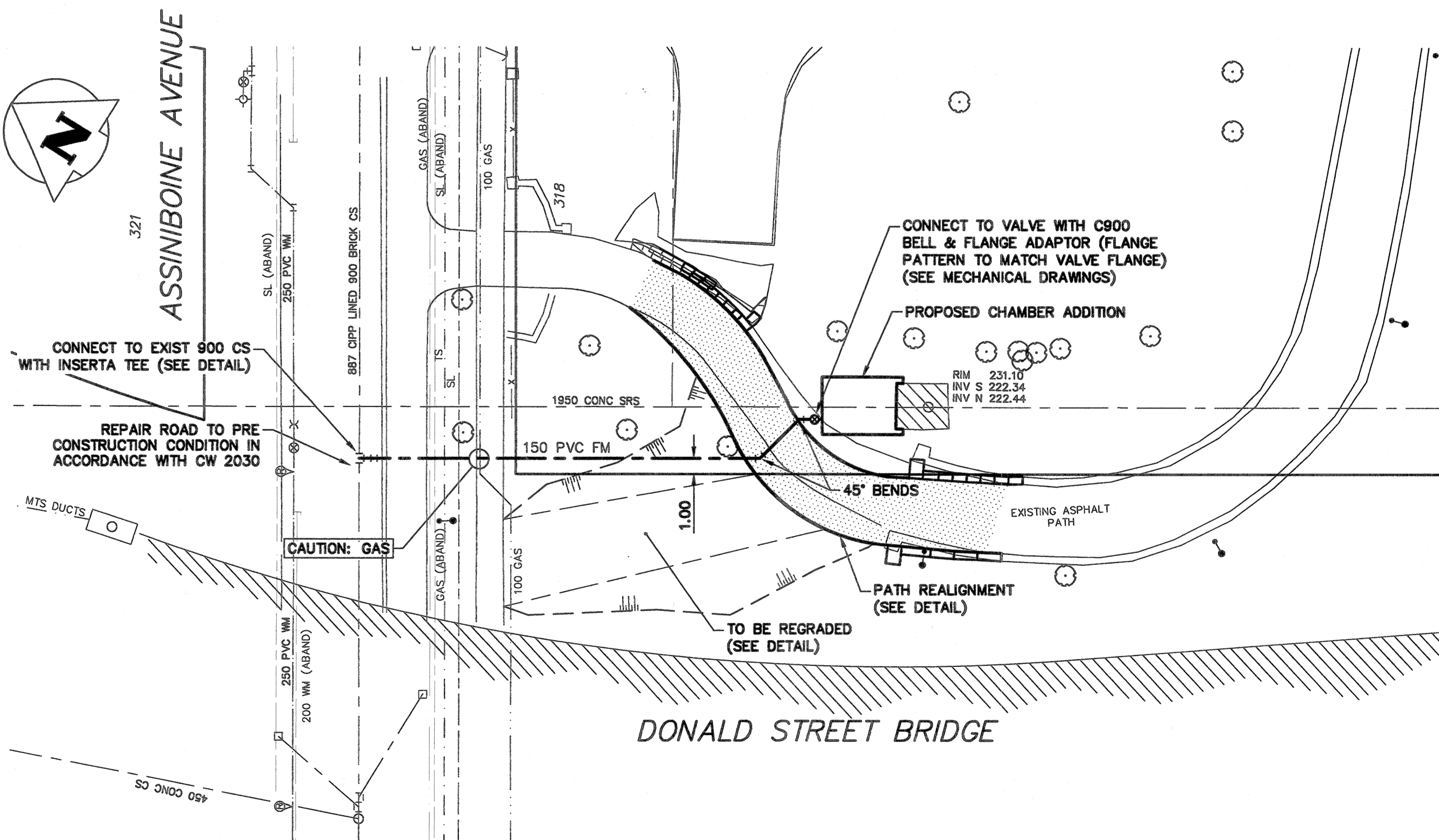


File Name: P:\Projects\2018\18-0107-005\DWG\Mun\18-0107-005_CALL.dwg - Tab: 001 Plotted By: Glewen 09/17/2018 [Mon 3:42pm] CW-9-M564-1

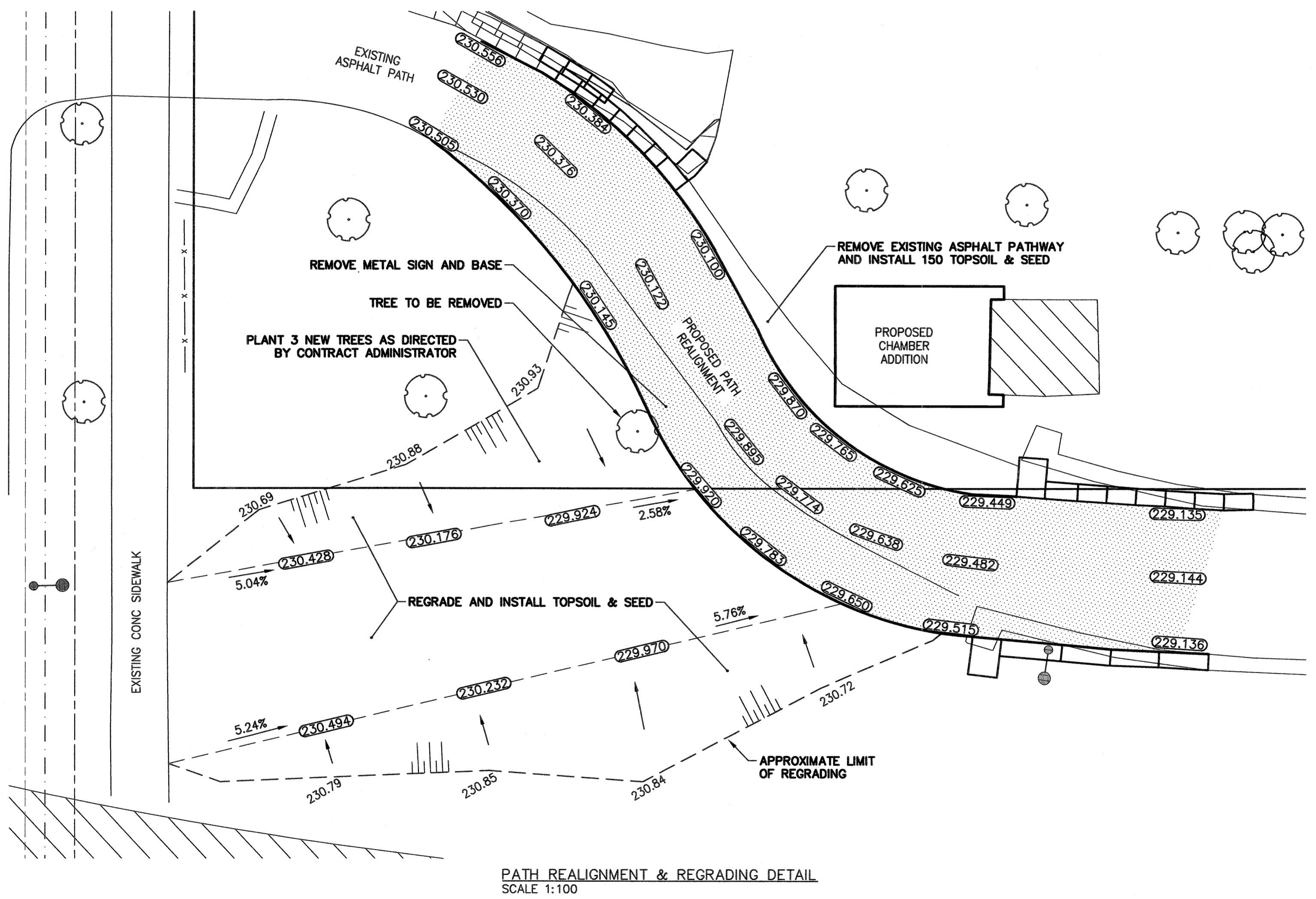
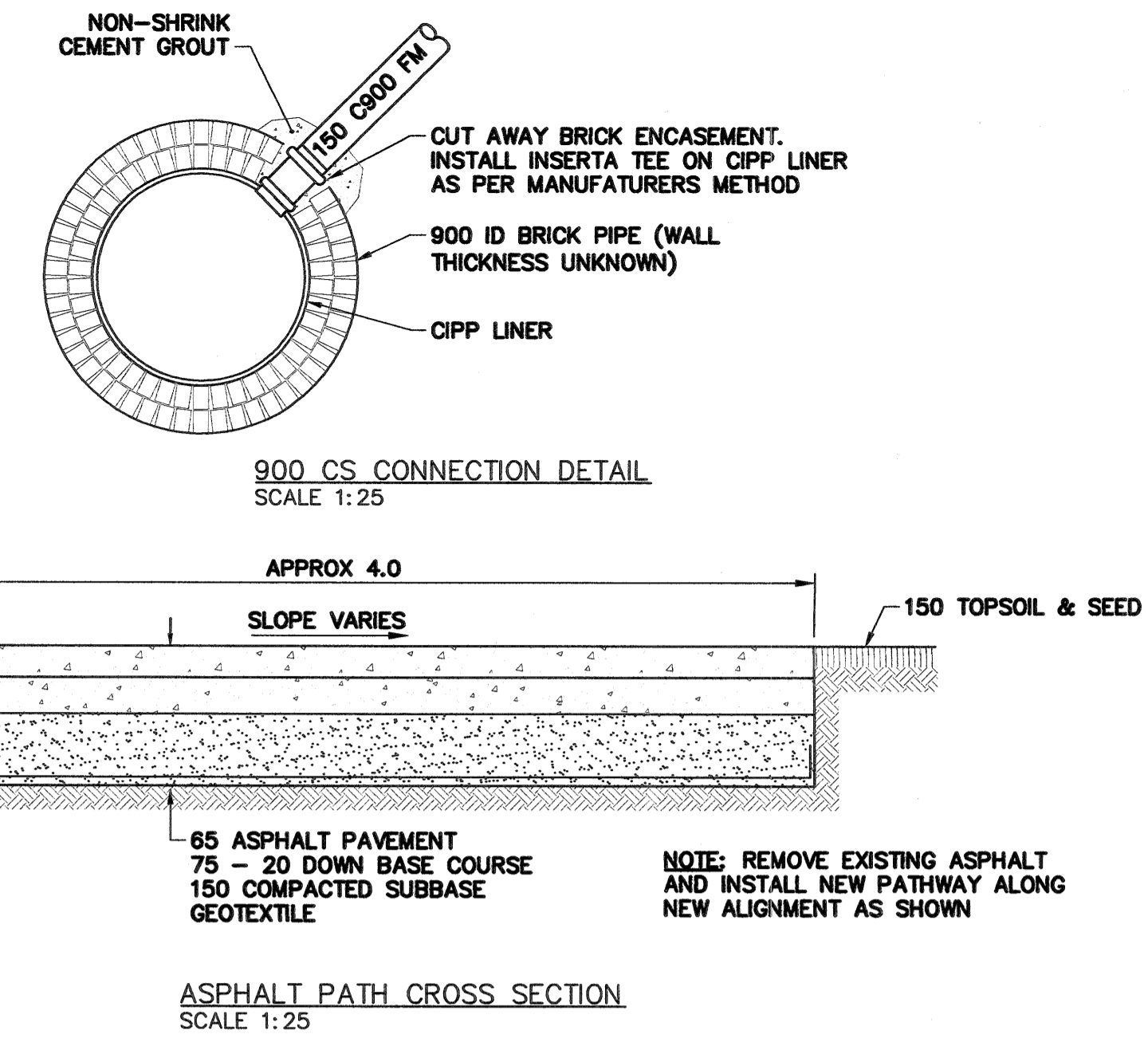
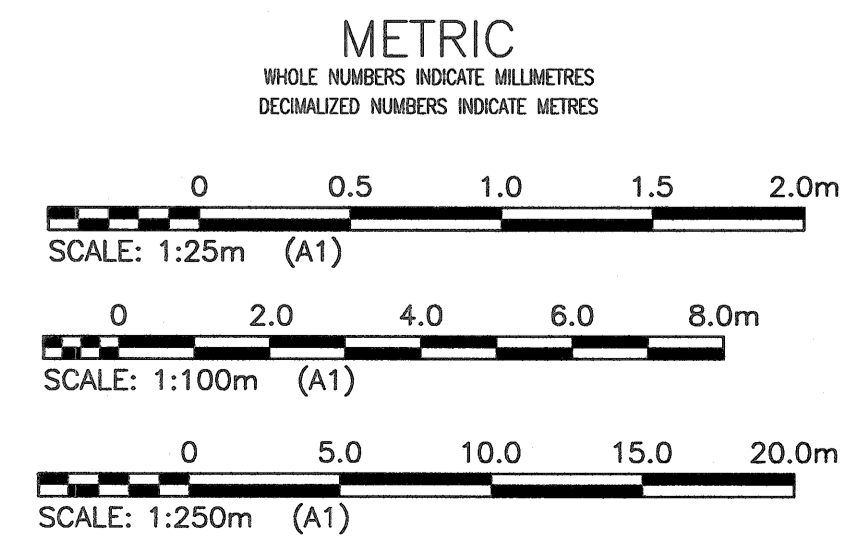


NOTE: CHAINAGES SHOWN ARE ALONG EAST R DONALD STREET



CONSTRUCTION NOTES

1. ALL UNDERGROUND WORKS TO BE CONSTRUCTED IN ACCORDANCE WITH THE LATEST REVISION OF THE CITY OF WINNIPEG STANDARD CONSTRUCTION SPECIFICATIONS.
2. CONTRACTOR TO VERIFY LOCATIONS OF ALL EXISTING UNDERGROUND UTILITIES PRIOR TO START OF CONSTRUCTION.
3. INSTALL SEWER BY TRENCHLESS METHODS.
4. ALL PIPE SHALL HAVE CLASS B BEDDING WHEN INSTALLED BY TRENCH METHOD.
5. BACKFILL UNDER PAVEMENT, IN SIDEWALKS, & WITHIN 1.0 OF PAVEMENT TO BE CLASS 5.
6. BACKFILL IN BOULEVARD TO BE CLASS 5.
7. MITIGATE IMPACT FROM SITE SURFACE RUNOFF.
8. PEDESTRIAN ACCESS MUST BE MAINTAINED DURING CONSTRUCTION.



ENGINEERS
GEOSCIENTISTS
MANITOBA
Certificate of Authorization
KGS Group
No. 245

FIELD BOOK #:				
POSTED TO LIS:				
DESIGNED BY	ALH	CHECKED BY	RBO	THE CITY OF WINNIPEG WATER AND WASTE DEPARTMENT
DRAWN BY	GEL	APPROVED BY	CMS	
HOR. SCALE	AS NOTED	RELEASED FOR CONSTRUCTION	K. ZUREK	DONALD OUTFALL CHAMBER UPGRADES
VERTICAL SCALE	AS NOTED	DATE	2018 07 19	
NO. REVISIONS		DATE	18/09/13	MUNICIPAL SITE PLAN, GRADING & FORCEMAIN
18-0107-005_C01				SHEET 2 OF 24 CITY DRAWING NUMBER LD-8634