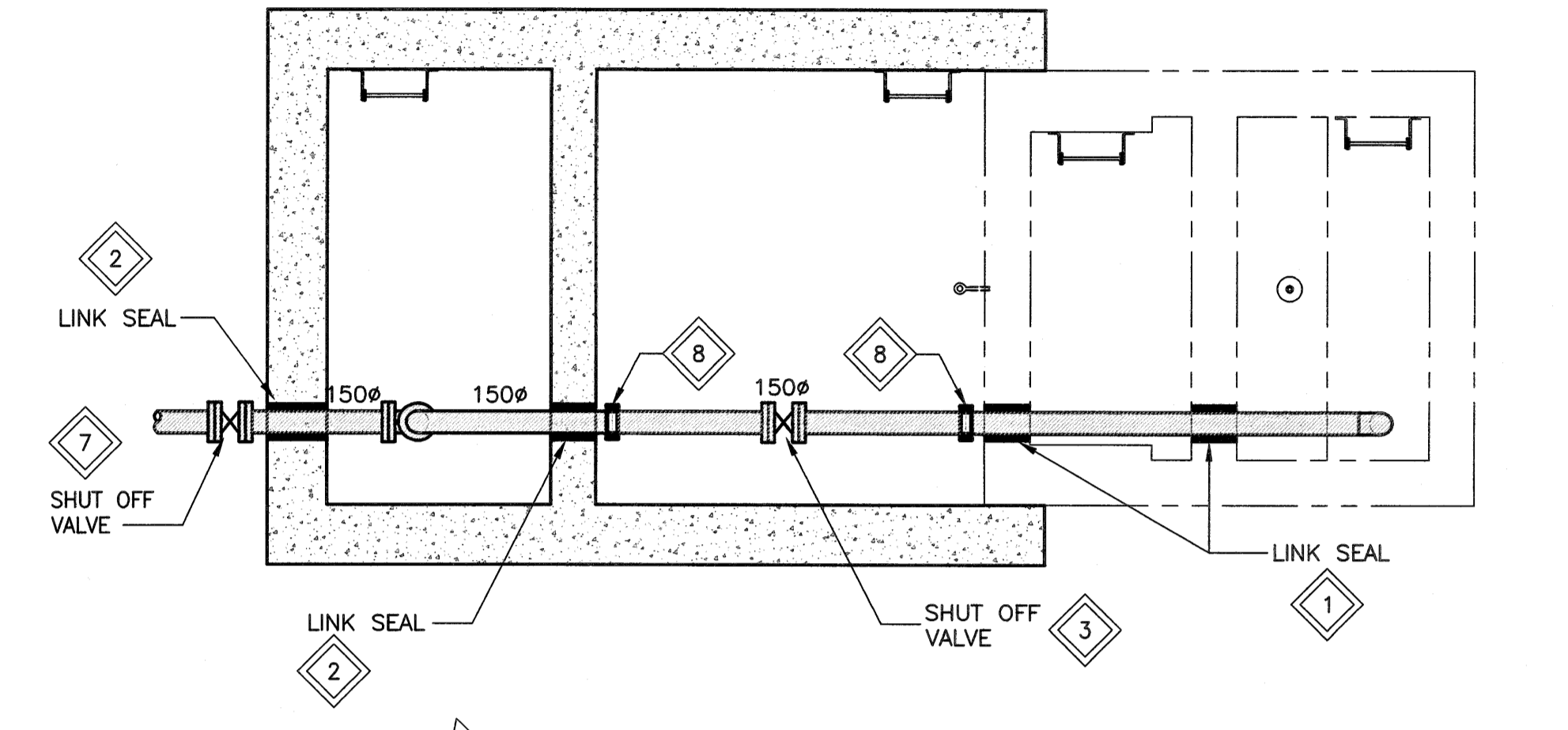
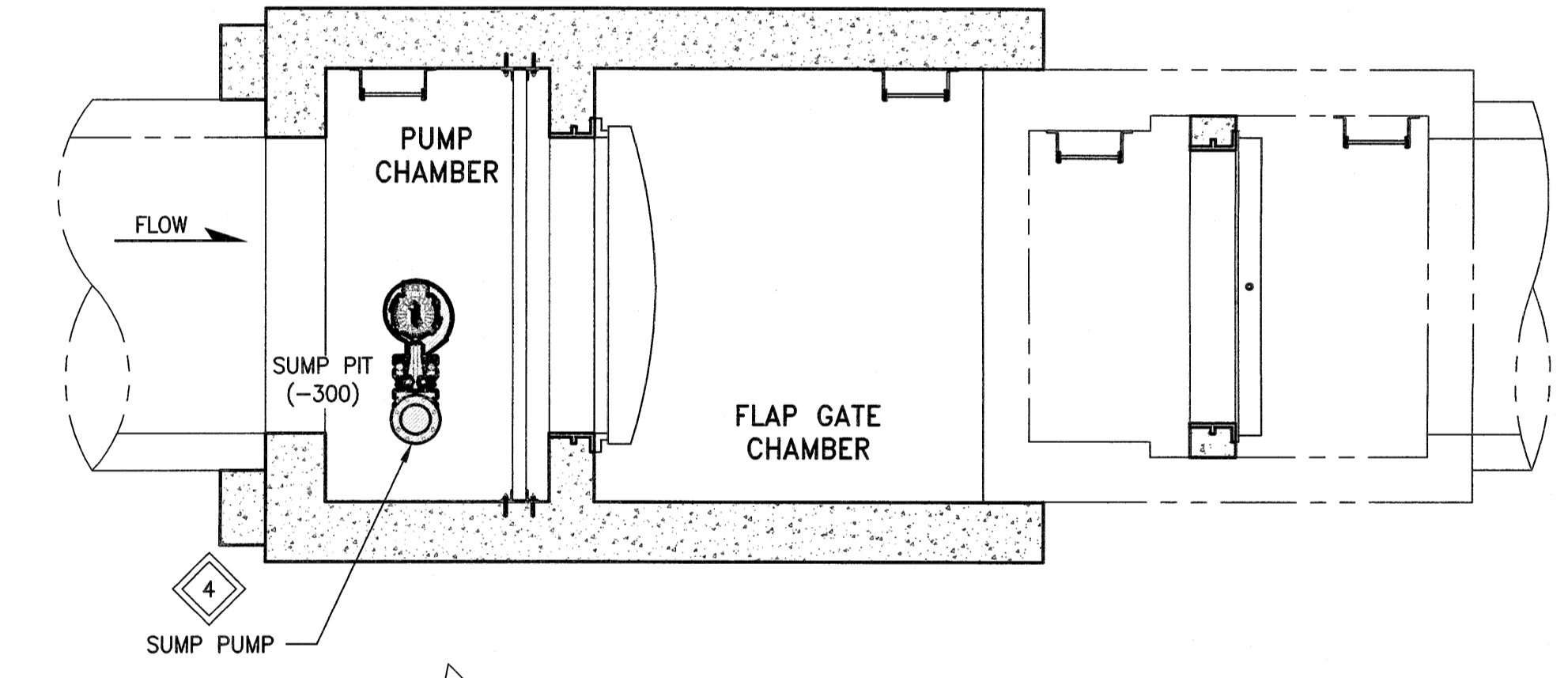


A SECTION
SCALE: 1:40



PLAN - EL. 229.600
SCALE: 1:40

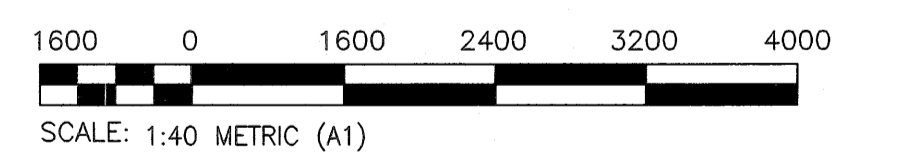


PLAN - EL. 222.257
SCALE: 1:40

- KEYNOTES:**
- 1 CORE THROUGH EXISTING CONCRETE TO SUIT NEW PIPING. PROVIDE LINK-SEAL CLOSURE AROUND OPENING.
 - 2 PROVIDE NEW CAST IN PLACE PIPE SLEEVE WITHIN NEW CONCRETE. PROVIDE LINK-SEAL CLOSURE AROUND OPENING.
 - 3 PROVIDE NEW PLUG SHUT-OFF VALVE WITH VALVE BOX, EXTEND BONNET ASSEMBLY LOCKABLE COVER, VALVE STEM EXTENSIONS AND VALVE POSITION INDICATOR. REFER TO SPECIFICATIONS FOR DETAILS.
 - 4 PROVIDE NEW SUMP PUMP WITH GUIDE RAILS, LIFT CHAIN, CHECK VALVE, PUMP BASE AND ASSOCIATED PIPING. SUPPORT GUIDE RAILS BACK TO THE CONCRETE CHAMBER WALL AT INTERVALS RECOMMENDED BY THE SYSTEM SUPPLIER. PROVIDE PIPING SUPPORTS TO THE CHAMBER WALL FOR ALL VERTICAL PIPING AND HANGING SUPPORTS FOR THE HORIZONTAL PIPING.
 - 5 NEW VALVE OPERATOR 50mm WITH EXTENSION TO VALVE BOX COVER PLATE. SUPPORT SECURELY FROM CHAMBER WALL.
 - 6 FASTEN PIPE TO CHAMBER WALL AT MINIMUM 3.0m INTERVALS AND AT CHANGES IN PIPE DIRECTION.

- 7 PROVIDE NEW RESILIENT SEALED GATE SHUT-OFF VALVE WITH FLOOR BOX, LOCKABLE COVER, VALVE STEM EXTEND BONNET ASSEMBLY EXTENSIONS AND VALVE POSITION INDICATOR. REFER TO SPECIFICATIONS FOR DETAILS.
- 8 PROVIDE GROOVED PIPE COUPLING CONNECTIONS FOR DISASSEMBLY OF PIPE.
- 9 PROVIDE TAPPED 6mmØ WEEPING HOLE IN VERTICAL PIPE SECTION 200mm DOWNSTREAM OF CHECK VALVE WITH NIPPLE AND PIPE PLUG.
- 10 PROVIDE VACUUM BREAKER WITH NPT INLET CONNECTION AND ISOLATION BALL VALVE.

- LEGEND:**
- NEW PIPING/EQUIPMENT
 - NEW SHUT OFF VALVE
 - NEW CHECK VALVE



METRIC
WHOLE NUMBERS INDICATE MILLIMETRES
DECIMALIZED NUMBERS INDICATE METRES

**ENGINEERS
GEOSCIENTISTS
MANITOBA**
Certificate of Authorization
KGS Group
No. 245

FIELD BOOK #:		KGS GROUP CONSULTING ENGINEERS		ENGINEER'S SEAL	
POSTED TO LBIS		DESIGNED BY	RCC	CHECKED BY	<i>[Signature]</i>
		DRAWN BY	EAG	APPROVED BY	<i>[Signature]</i>
1	RE-ISSUED FOR CONSTRUCTION	18/09/21	RCC	HDR. SCALE	AS NOTED
0	ISSUED FOR CONSTRUCTION	18/09/13	RCC	VERTICAL	AS NOTED
NO.	REVISIONS	DATE	BY	DATE	2018 07 25
				RELEASED FOR CONSTRUCTION	K. ZUREK
				DATE	2018 09 11

PROVINCE OF MANITOBA
CHEN
Member
30523
REGISTERED PROFESSIONAL ENGINEER

THE CITY OF WINNIPEG
WATER AND WASTE DEPARTMENT

DONALD OUTFALL CHAMBER UPGRADES

MECHANICAL
PLANS AND SECTIONS

SHEET 9 OF 24
CITY DRAWING NUMBER
LD-8641