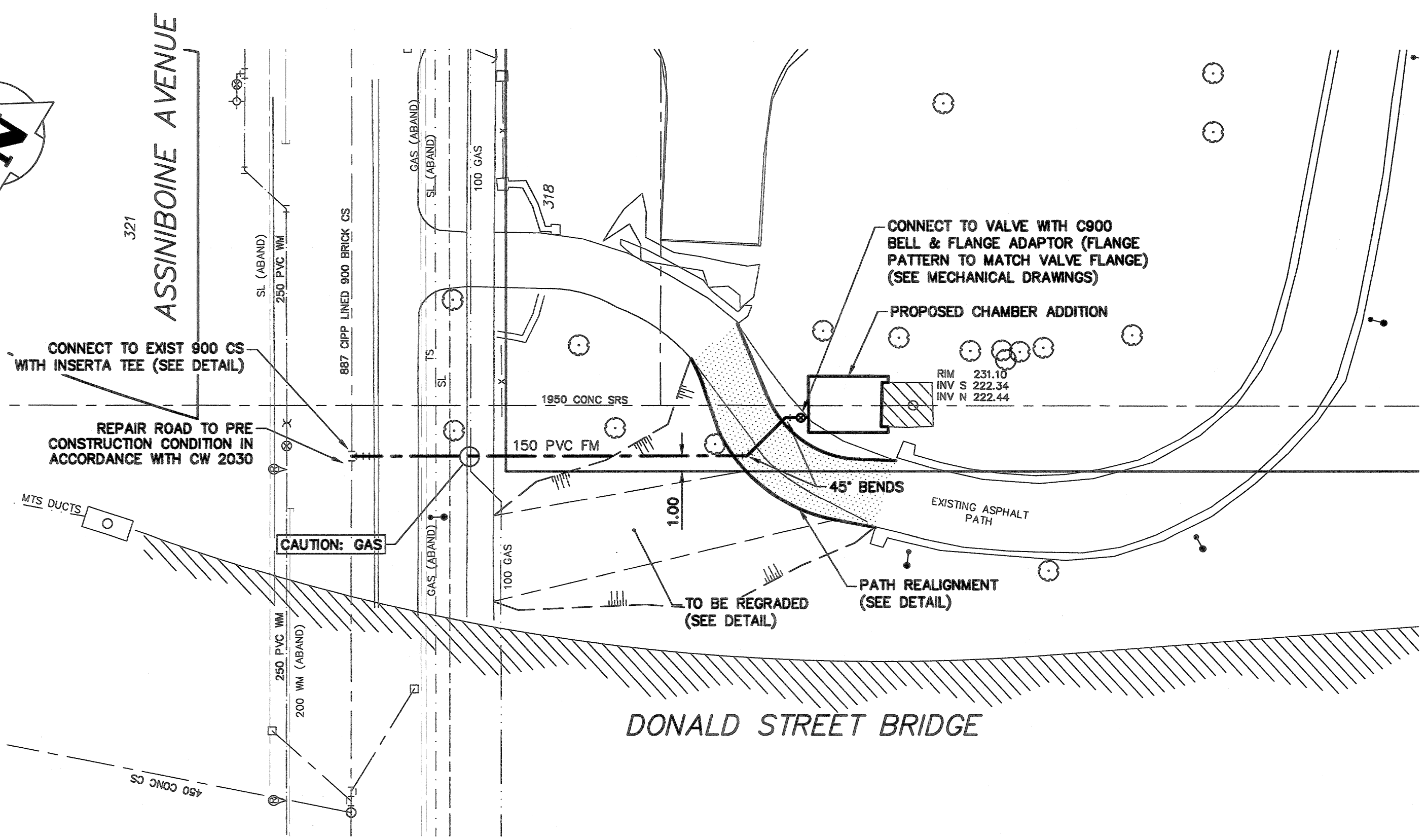
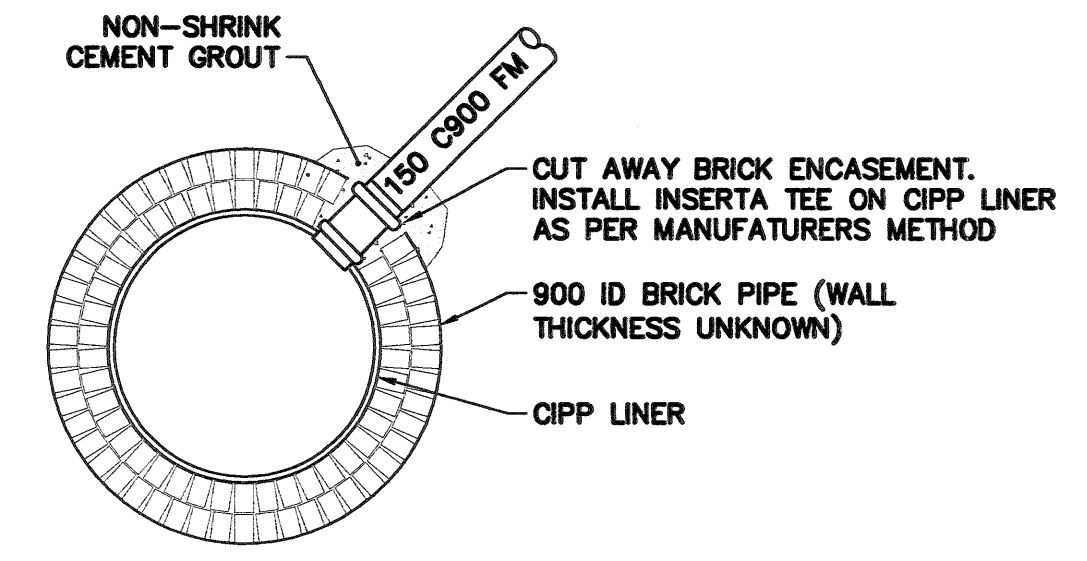
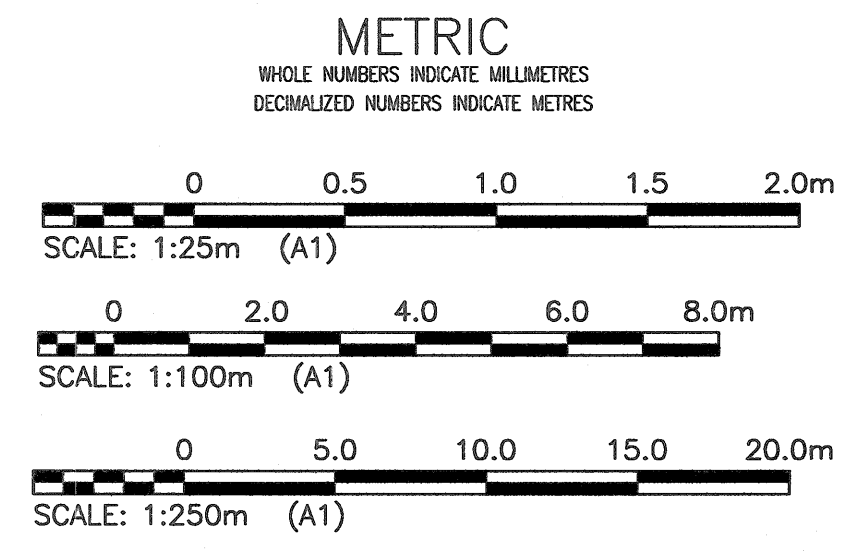


NOTE: CHAINAGES SHOWN ARE ALONG EAST R DONALD STREET

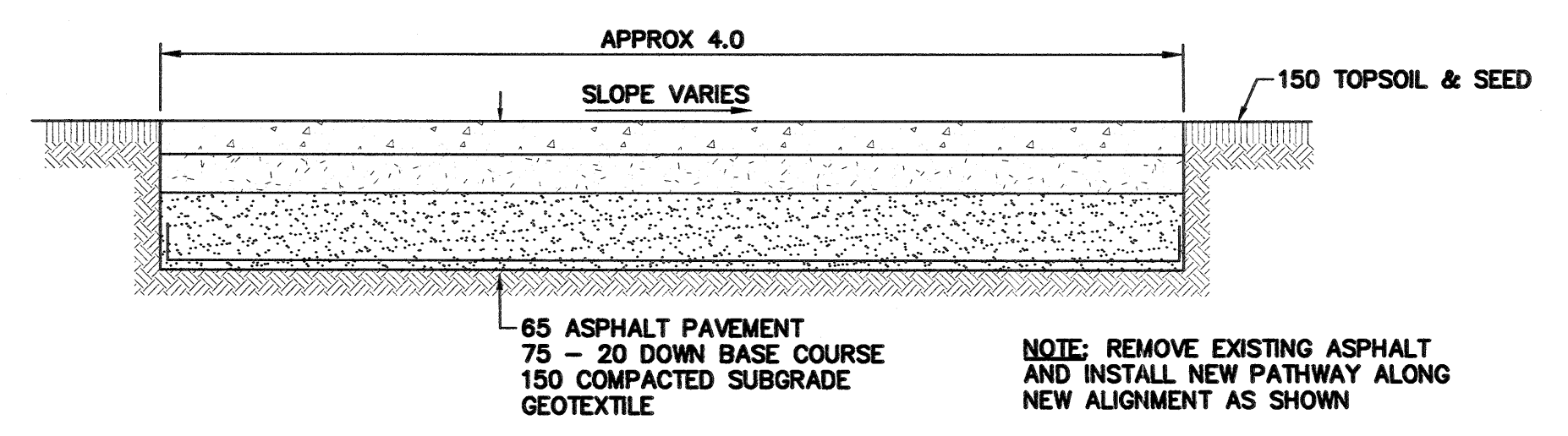


CONSTRUCTION NOTES

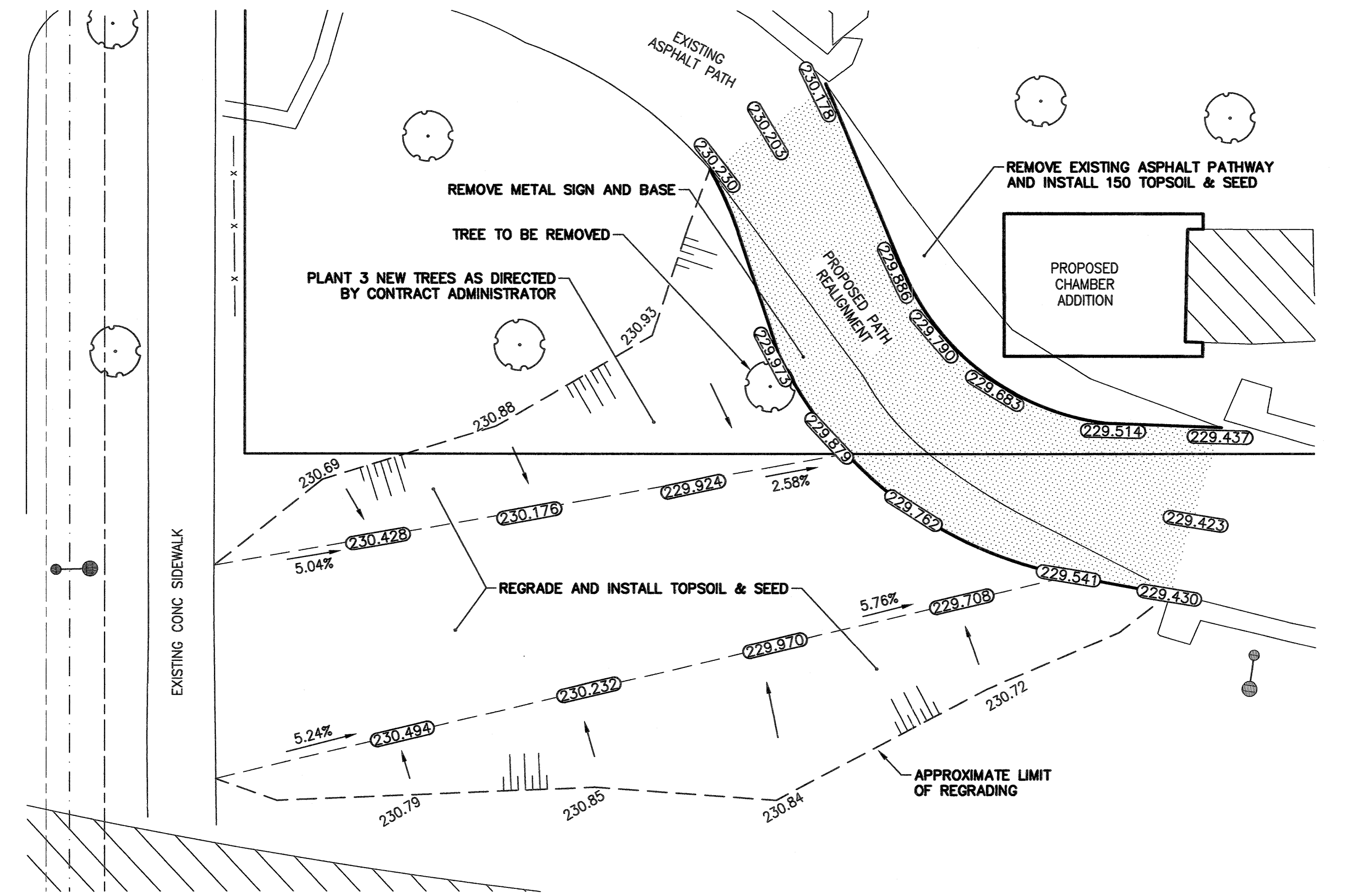
1. ALL UNDERGROUND WORKS TO BE CONSTRUCTED IN ACCORDANCE WITH THE LATEST REVISION OF THE CITY OF WINNIPEG STANDARD CONSTRUCTION SPECIFICATIONS.
2. CONTRACTOR TO VERIFY LOCATIONS OF ALL EXISTING UNDERGROUND UTILITIES PRIOR TO START OF CONSTRUCTION.
3. INSTALL SEWER BY TRENCHLESS METHODS.
4. ALL PIPE SHALL HAVE CLASS B BEDDING WHEN INSTALLED BY TRENCH METHOD.
5. BACKFILL UNDER PAVEMENT, IN SIDEWALKS, & WITHIN 1.0 OF PAVEMENT TO BE CLASS 3.
6. BACKFILL IN BOULEVARD TO BE CLASS 5.
7. MITIGATE IMPACT FROM SITE SURFACE RUNOFF.
8. PEDESTRIAN ACCESS MUST BE MAINTAINED DURING CONSTRUCTION.



900 CS CONNECTION DETAIL
SCALE 1:25



ASPHALT PATH CROSS SECTION
SCALE 1:25



PATH REALIGNMENT & REGRADING DETAIL
SCALE 1:100

ENGINEERS
GEOSCIENTISTS
MANITOBA
Certificate of Authorization
KGS Group
No. 245

FIELD BOOK #:					
DESIGNED BY	ALH			CHECKED BY	RBO
DRAWN BY	GEL	APPROVED BY	CUS	SHEET 1 OF 1	
HOR. SCALE	AS NOTED	RELEASED FOR CONSTRUCTION		CITY DRAWING NUMBER	
VERTICAL SCALE	AS NOTED			LD-8634	
ISSUED FOR CONSTRUCTION	18/09/11	DATE	2018 07 19	18-0107-005_C01	
NO. REVISIONS		DATE			