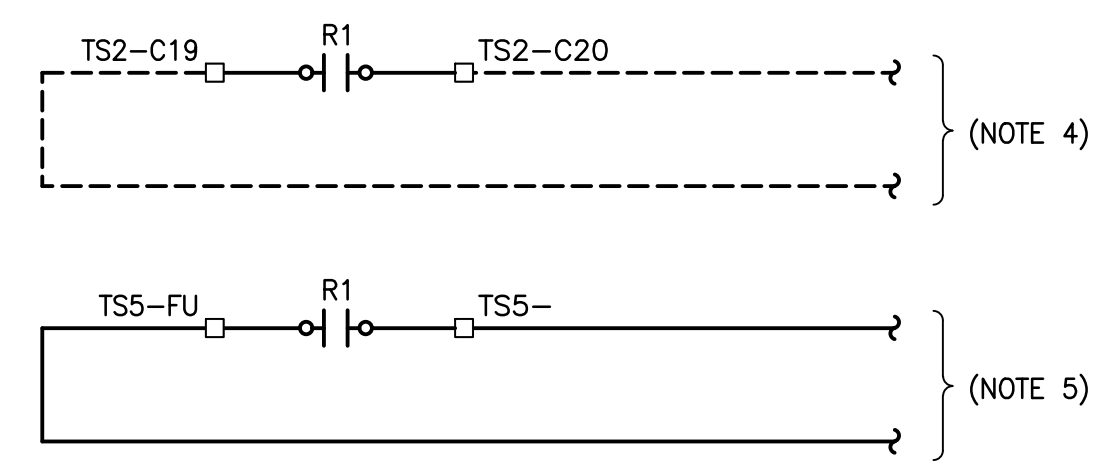
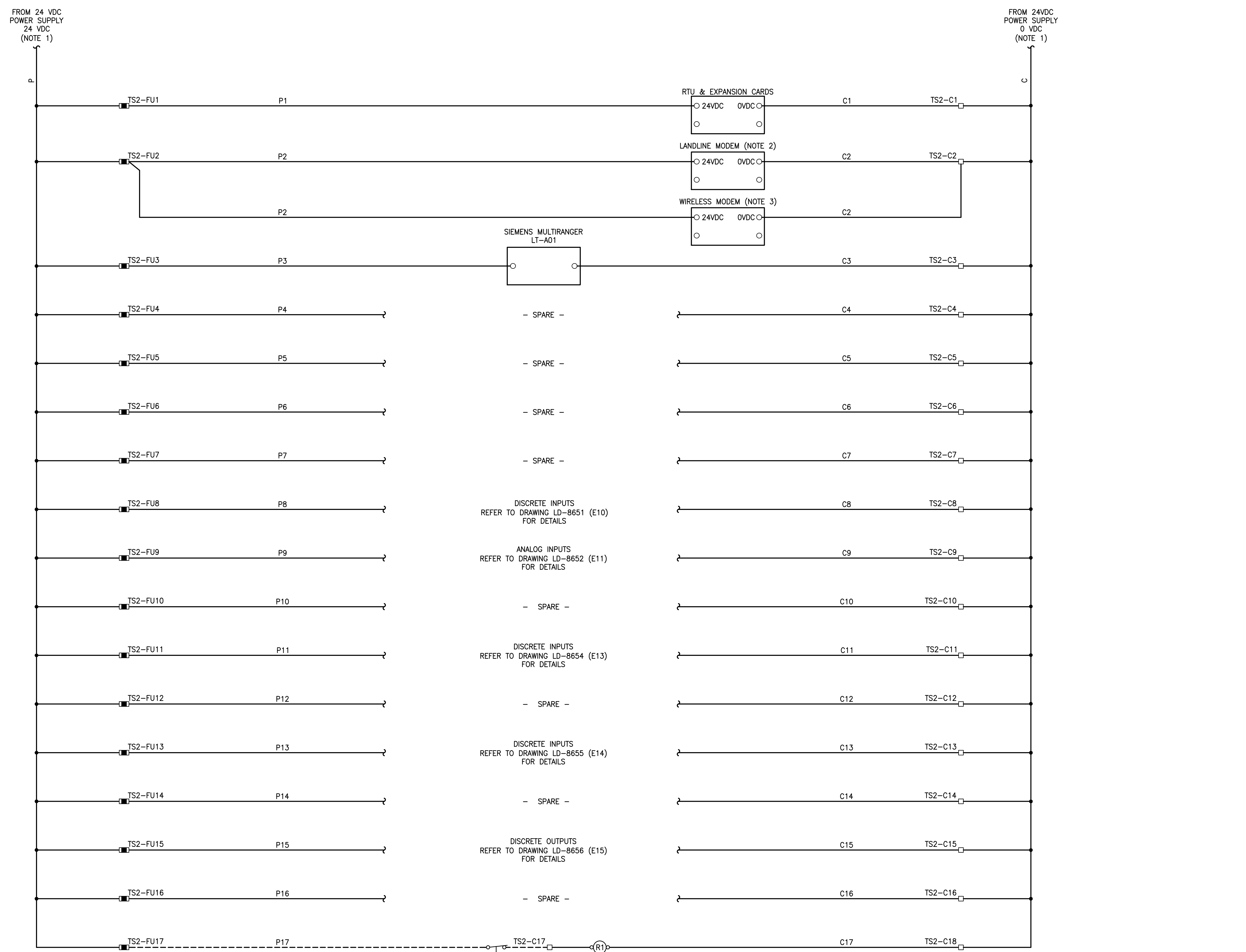


File Name: \\k-file-4\p-data\Projects\2018\18-0107-005\Dwg\Elec\18-0107-005_E08.dwg - Tab: E08 Plotted By: jdeleon 09/12/2018 [Wed 11:23am] CW-9-MS64-1



- NOTES:**
- REFER TO DRAWING LD-8650 (E09) FOR ADDITIONAL DETAILS.
 - LANDLINE MODEM SHALL BE A PHOENIX CONTACT PSI-DATA/FAX-MODEM/RS232 (PART No.2708203). PROVIDE RS-232 DATA CABLE BETWEEN RTU AND MODEM.
 - WIRELESS MODEM SHALL BE A SIXNET SN-6821 (PART No. SN-6821-MTS) C/W SIM CARD SETUP WITH AN MTS ACCOUNT AND ANTENNA MOUNTED EXTERNALLY TO RTU ENCLOSURE. PROVIDE A CAT5E PATCH CABLE BETWEEN RTU AND WIRELESS MODEM.
 - REFER TO DRAWING LD-8643 (E02) FOR ADDITIONAL DETAILS.
 - REFER TO DRAWING LD-8654 (E13) FOR ADDITIONAL DETAILS.

- LEGEND:**
- RTU TERMINAL
 - ⊠ FIELD DEVICE TERMINAL
 - FUSED TERMINAL
 - PANEL WIRING
 - - - - - FIELD WIRING



POSTED TO LBIS		FIELD BOOK #:	
DESIGNED BY	LU	CHECKED BY	JAB
DRAWN BY	JPL	APPROVED BY	JAB
HDR. SCALE	AS NOTED	RELEASED FOR CONSTRUCTION	K. ZUREK
VERTICAL	AS NOTED	DATE	2018 09 11
0 ISSUED FOR CONSTRUCTION	18/09/11	JAB	
NO. REVISIONS	DATE	BY	DATE

ENGINEER'S SEAL

E08

Winnipeg THE CITY OF WINNIPEG
WATER AND WASTE DEPARTMENT

DONALD OUTFALL CHAMBER UPGRADES SHEET 17 OF 24
CITY DRAWING NUMBER LD-8649

ELECTRICAL
RTU PANEL
120VDC POWER & FUSE DISTRIBUTION