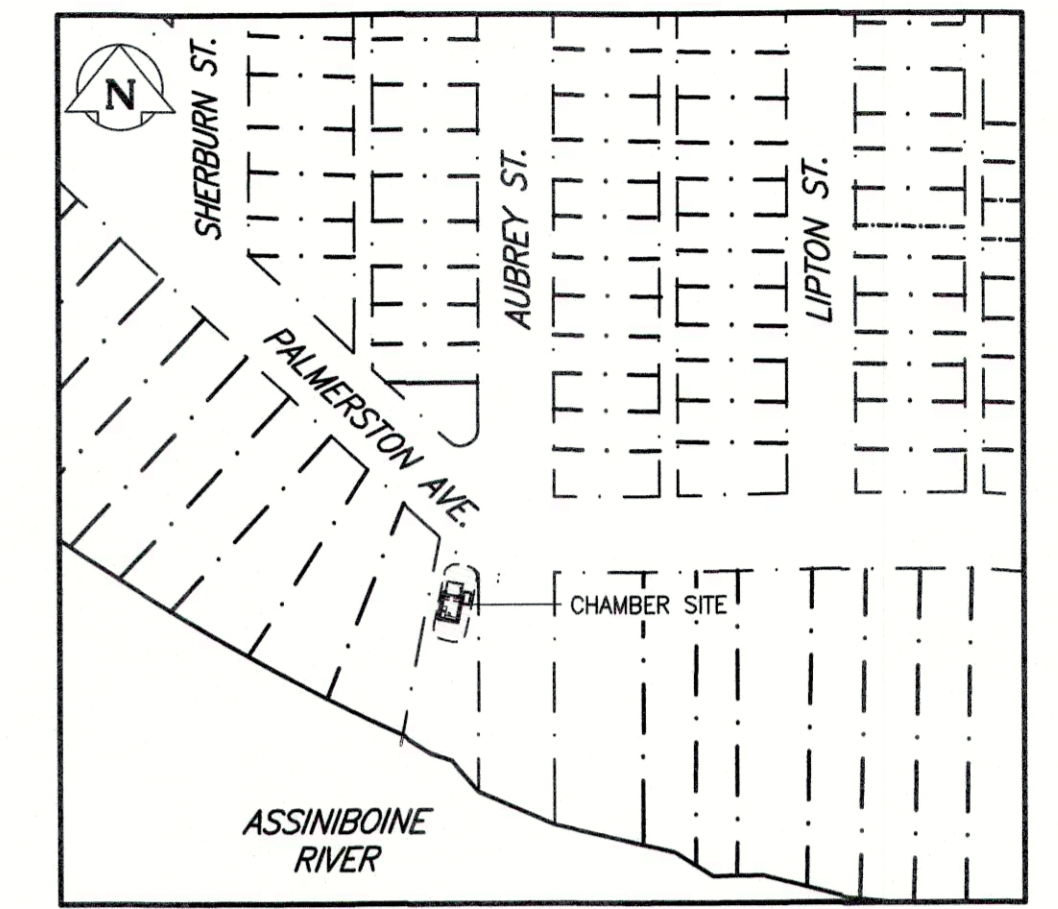
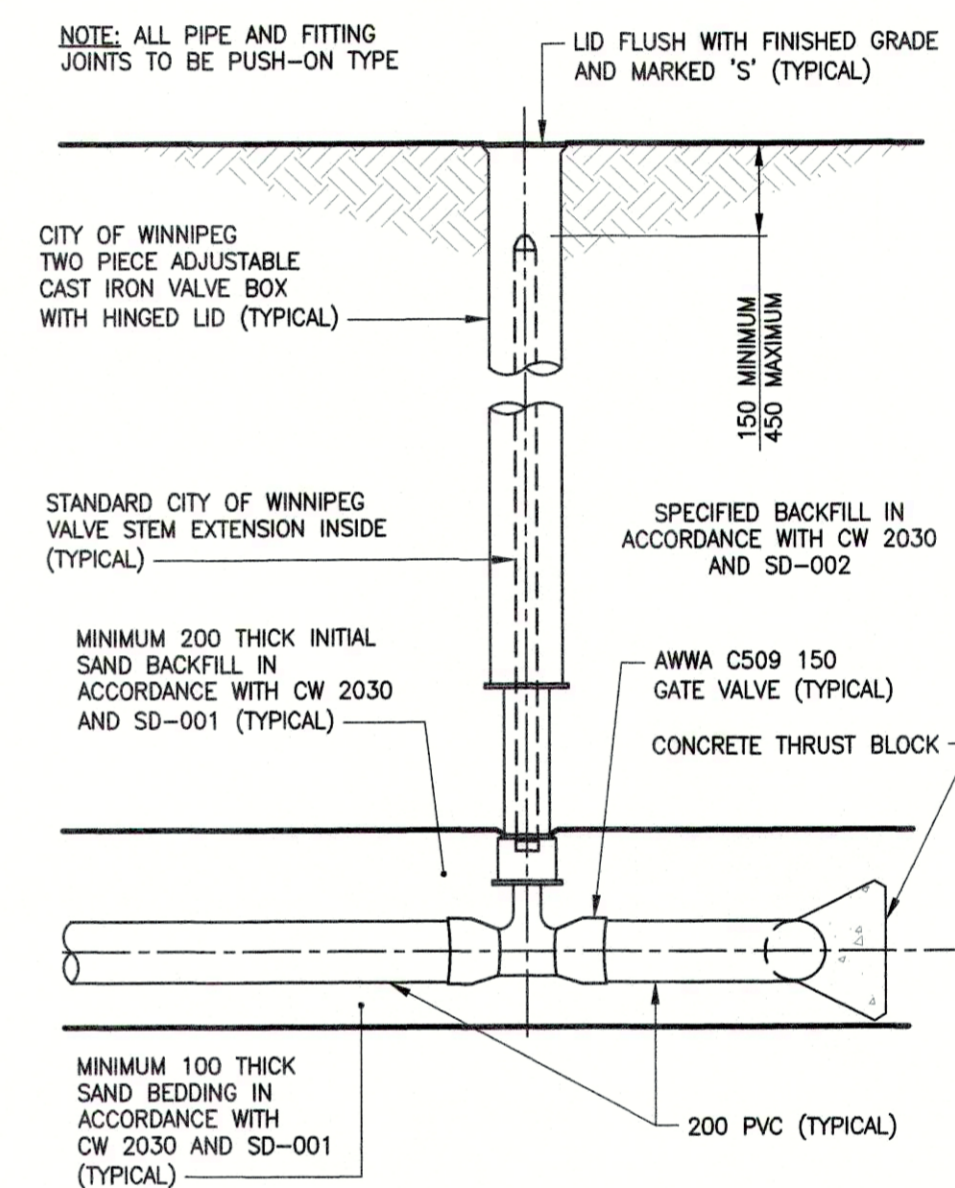


SECTION THROUGH CENTRELINE OF EXISTING 2 890 Ø CONCRETE SRS

HORIZONTAL 1:200
VERTICAL 1:600



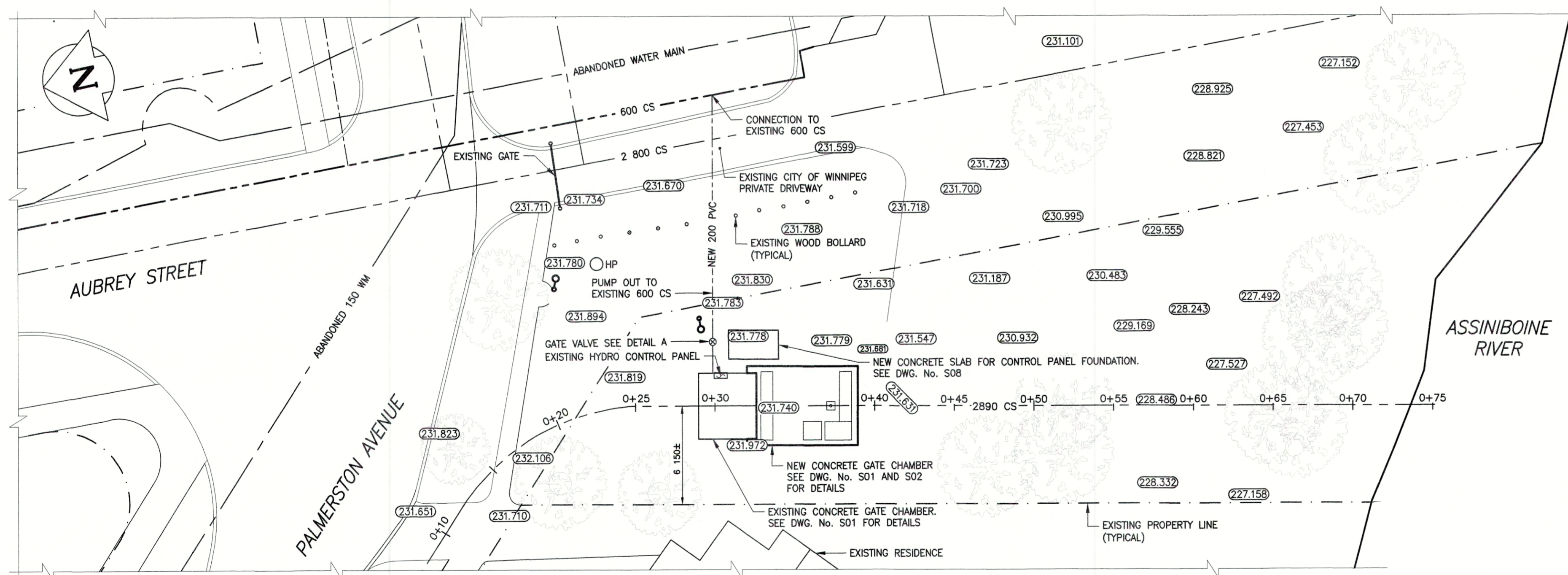
KEY PLAN
N.T.S.



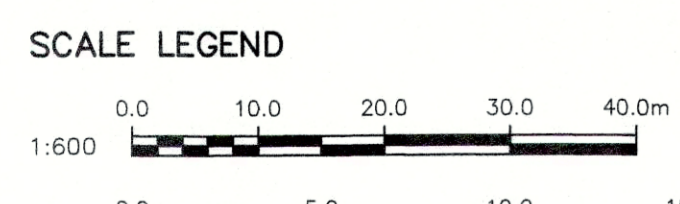
GATE VALVE DETAIL
1:25

CONSTRUCTION NOTES:

- RESTORE ALL DISTURBED GRASS AREAS WITH IMPORTED TOP SOIL AND SOD IN ACCORDANCE WITH CW 3510.
- LEAVE SLUICE GATE IN EXISTING CHAMBER IN FULL OPEN POSITION AT ALL TIMES EXCEPT WHEN ON SITE WORKING ON GATE.
- PROVIDE TEMPORARY PUMPING OF FLOW IN SRS AS REQUIRED DURING CONSTRUCTION.
- PREVENT EXCAVATED MATERIAL, BACKFILL MATERIAL AND SOIL / WATER SLURRY FROM ENTERING THE SRS OUTFALL TO THE RIVER.
- DO NOT REMOVE EXISTING TREES UNLESS NOTED OTHERWISE. PROVIDE TREE PROTECTION IN ACCORDANCE WITH SPECIFICATIONS.
- CONFIRM LOCATION AND ELEVATION OF EXISTING SRS, SEWER MAIN AND WATER MAIN BEFORE CONSTRUCTION COMMENCES.



SITE PLAN
1:200

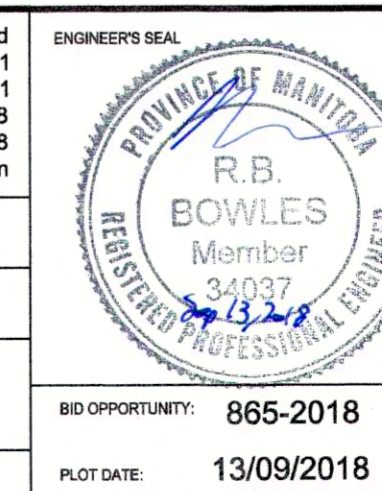


METRIC
WHOLE NUMBERS INDICATE MILLIMETRES
DECIMALIZED NUMBERS INDICATE METRES



PLAN LEGEND		G.R.M. ELEV.	
WM	WATER MAIN	---	---
SRS	STORM RELIEF SEWER	---	---
CS	COMBINED SEWER	---	---
---	BARRIER CURB	---	---
(32.50)	ELEVATION		
HP	HYDRO POLE		
○	LIGHT STANDARD		
○	MANHOLE		
---	PROPERTY LINE		
---	WOOD FENCE		
EXISTING	DESCRIPTION	PROPOSED	
NO.	REVISIONS	DATE	BY

wsp		WSP Canada Group Limited 93 Lombard Avenue, Suite 111 Winnipeg MB R3B 3B1 T +1 204-943-3178 F +1 204-943-4948 www.wsp.com	
DESIGNED BY	BB	CHECKED BY	EH
DRAWN BY	KD	APPROVED BY	JPL
HOR. SCALE	AS NOTED	RELEASED FOR CONSTRUCTION	Signed by KZ September 14, 2018
VERTICAL	AS NOTED	DATE	13/09/2018



THE CITY OF WINNIPEG
WATER AND WASTE DEPARTMENT

OUTFALL GATE CHAMBER UPGRADES
AUBREY STREET
SRS OUTFALL GATE CHAMBER

CONSULTANT DRAWING NUMBER: 5516047 - C01
SHEET 02 OF 33
CITY DRAWING NUMBER: LD-8014

BID OPPORTUNITY: 865-2018
PLOT DATE: 13/09/2018

Sep 13, 2018 - 8:13am
 P:\5516047-5516047 - Ruby & Aubrey Chamber Upgrades\MM Drawings\5516047 DO Gate Chambers - Aubrey Upgrades\01_508_Site plan, Control panel Ind.dwg - Job.C01 - Site Plan

NOTE: These design documents are prepared solely for the use by the party with whom the design professional has entered into a contract and there are no representations of any kind made by the design professional to any party with whom the design professional has not entered into a contract.