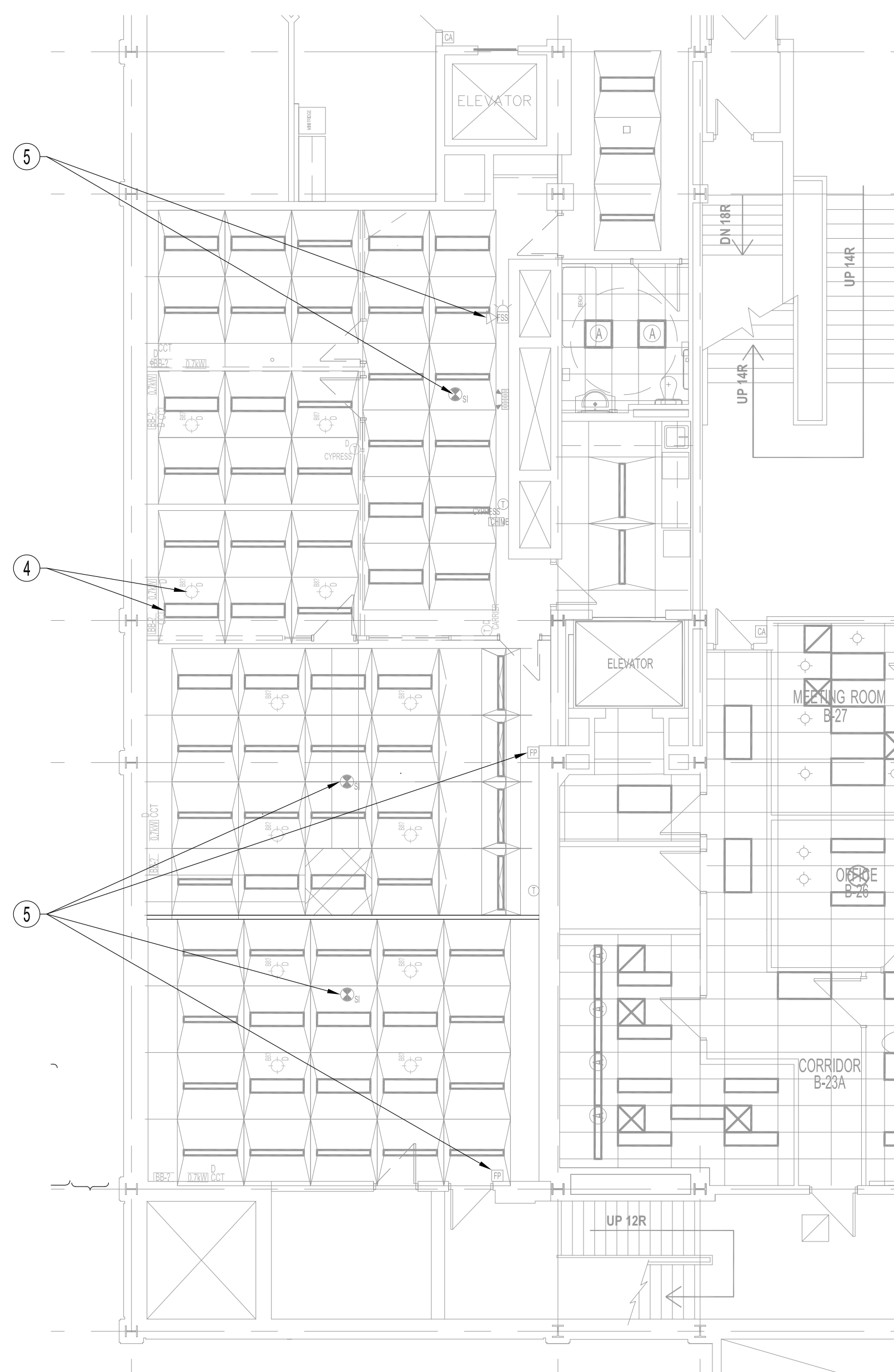
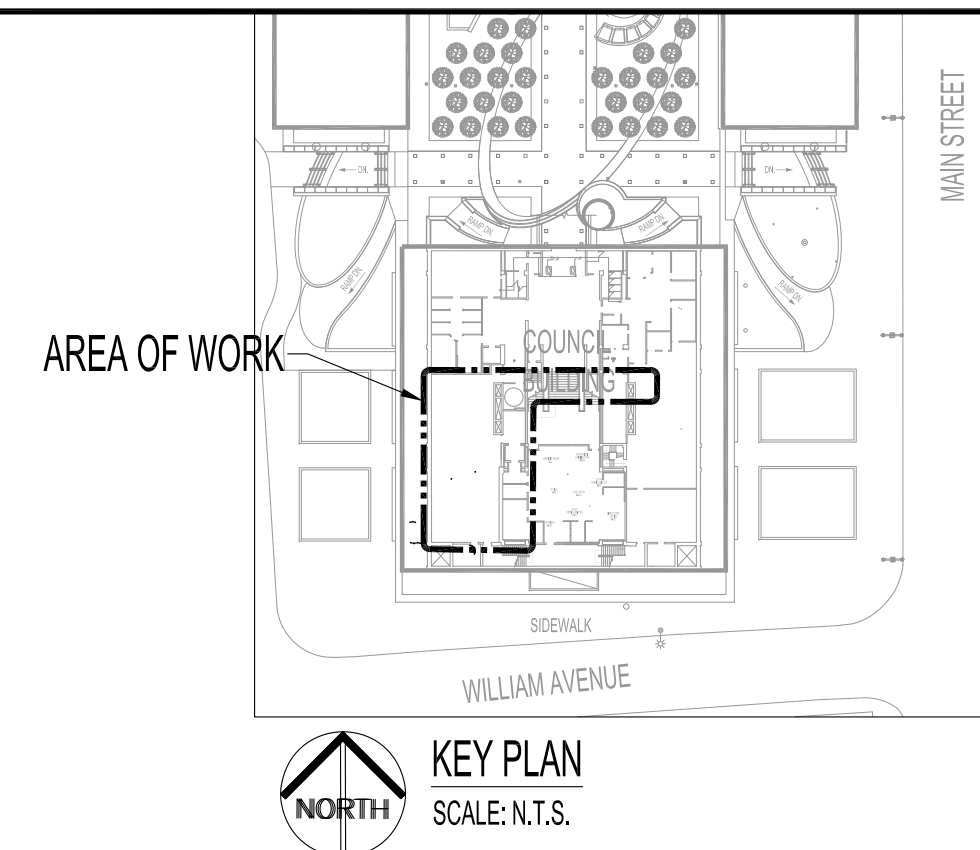


PARTIAL BASEMENT FLOOR PLAN - DEMOLITION
SCALE: 1/8"=1'-0"



PARTIAL BASEMENT REELECTED CEILING PLAN - DEMOLITION
SCALE: 1/8"=1'-0"



NOTES:
REFER TO DRAWING E1.

POWER AND SYSTEMS DEMOLITION NOTES: "X"

ALSO SEE NOTES & SPECIFICATIONS.
REFER TO APPLICABLE RENOVATION DRAWING FOR RELOCATED COMPONENTS.
ALL ABANDONED CABLES TO BE REMOVED FROM PLENUM SPACES AS REQUIRED BY LATEST CANADIAN ELECTRICAL CODE.
DO NOT DISTURB OR DISCONNECT ANY WIRING & CABLING IN AREA OF WORK REQUIRED FOR OTHER AREAS.

1. REMOVE ALL COMPONENTS WITH DESIGNATION "D" BACK TO SOURCE, UNLESS OTHERWISE NOTED. UNUSED TV COAXIAL CABLE STILL CONNECTED TO SOURCE SHALL BE LABELLED, RECOILED & STORED IN A NEAT FASHION IN THE CEILING SPACE & MAYBE REDEPLOYED.
 - 1.1. NOTE: CONCRETE CEILING CONSISTS OF ELECTRICAL CELLULAR STEEL FLOOR CELLS CONTAINING TYPE "Q" HEADER DUCTS & TYPE "Q" JACK HEADER DUCTS WITH STANDARD JUNCTION UNITS FOR EVERY CELL. EACH TYPE "Q" HEADER DUCTS & TYPE "Q" JACK HEADER DUCTS HAVE A SET OF PROVISION FOR SIGNAL, TELEPHONE & POWER.
2. REMOVE ELECTRIC BASE BOARD HEATERS & CONNECTED THERMOSTAT BACK TO SOURCE.
3. FIBRE OPTIC & WALL CABINET TO REMAIN.
4. REMOVE ALL EXISTING CEILING LUMINARIES & LIGHT SWITCHES IN EOC AREAS- INCLUDES LUNCH ROOM B-19 & STORAGE RM. B-21 BACK TO SOURCE.
5. ALL FIRE DETECTION/PREVENTION DEVICES TO REMAIN (E.G., CEILING HEAT DETECTORS, SMOKE DETECTORS, FIRE ALARM PULL STATIONS, COMBINATION HORN STROBES, EMERGENCY LIGHTING).

0	ISSUED FOR CONSTRUCTION	DTA	2018.08.24
00	ISSUED FOR 90% CLIENT REVIEW	DTA	2018.08.17
No.	REVISION/DESCRIPTION	BY	DATE

SEAL



DRAWN	DTA	CHECKED	DESIGNED	DTA	APPROVED
DATE	2018.07.26	USER	APPROVAL		

THE CITY OF WINNIPEG
PLANNING, PROPERTY AND
DEVELOPMENT DEPARTMENT
MUNICIPAL ACCOMMODATIONS DIVISION
3-65 GARRY STREET, R3C 4K4

PROJECT
COUNCIL BUILDING
EMERGENCY OPERATIONS CENTRE RENOVATIONS

510 MAIN STREET BID OPPORTUNITY: 870-2018

SHEET TITLE
PARTIAL BASEMENT FLOOR PLAN
DEMOLITION
POWER AND SYSTEMS

SCALE	PROJECT No:	SHEET No:
AS SHOWN	2018-010	E2