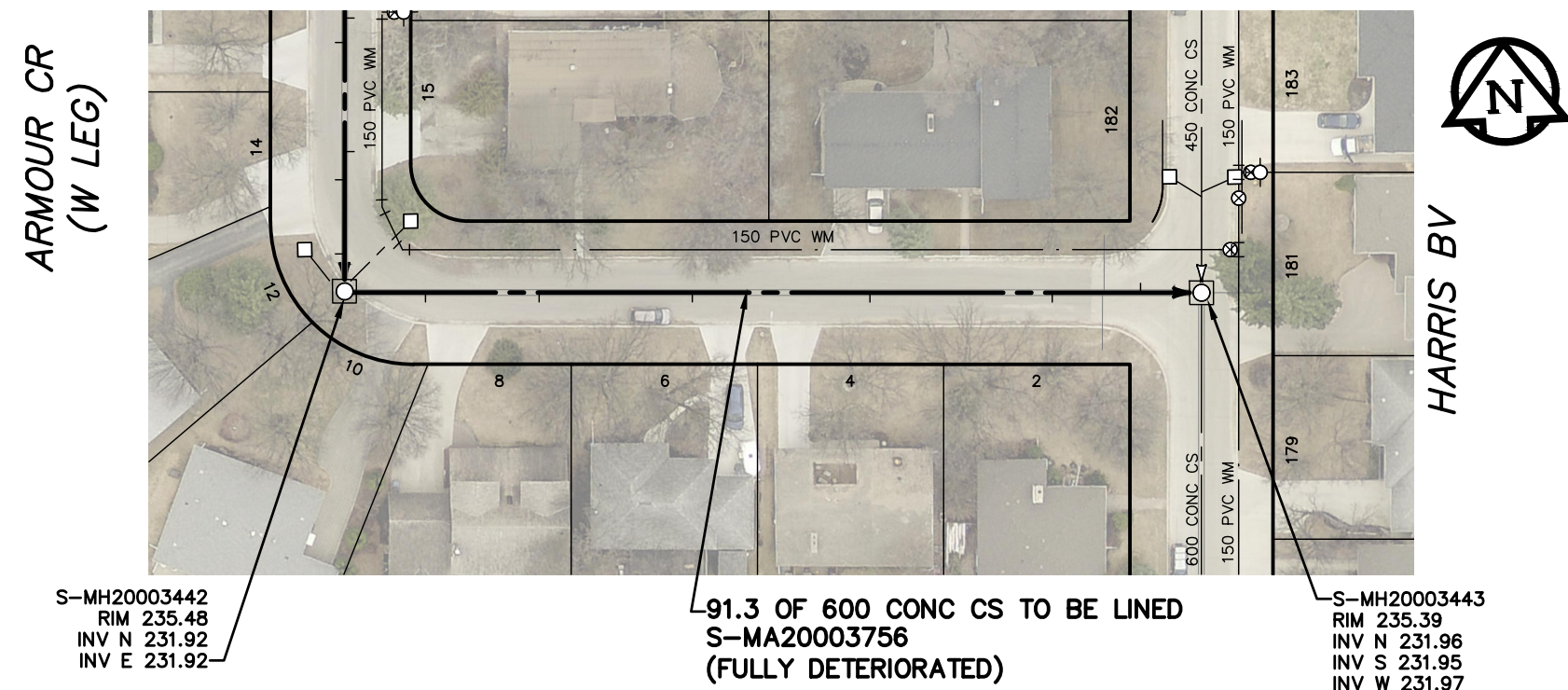


ARMOUR CRESCENT (S LEG)



SEWER JUNCTION INFORMATION FROM SEWER VIDEO INSPECTION		
SEWER ID S-MA20003756		
DISTANCE FROM MH ID S-MH20003442		
DISTANCE	DIAMETER	CLOCK
8.6	150	01
20.7	150	01
37.0	150	01
55.9	150	01
75.3	150	01
84.7	150	11

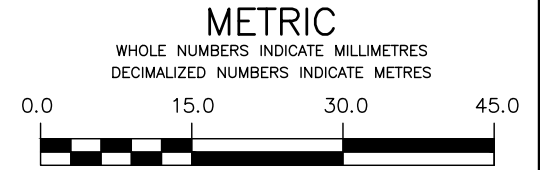
S-MH20003442
RIM 235.48
INV N 231.92
INV E 231.92

91.3 OF 600 CONC CS TO BE LINED
S-MA20003756
(FULLY DETERIORATED)

S-MH20003443
RIM 235.39
INV N 231.96
INV S 231.95
INV W 231.97

WARNING
IF POWER EQUIPMENT OR EXPLOSIVES ARE TO BE USED FOR EXCAVATION ON THIS PROJECT THE CONTRACTOR MUST:
1) NOTIFY THE GAS COMPANY OF THE PROPOSED LOCATION OF EXCAVATION.
2) TAKE PRECAUTION TO AVOID DAMAGE TO GAS COMPANY INSTALLATIONS.
SEE PROVINCIAL REGULATION 210/72 FOR DETAILS

FOR INDEX SEE 11643



LOCATION APPROVED UNDERGROUND STRUCTURES		B.M.	ELEV.
SUPV. U/G STRUCTURES COMMITTEE	DATE		
NOTE: LOCATION OF UNDERGROUND STRUCTURES AS SHOWN ARE BASED ON THE BEST INFORMATION AVAILABLE BUT NO GUARANTEE IS GIVEN THAT ALL EXISTING UTILITIES ARE SHOWN OR THAT THE GIVEN LOCATIONS ARE EXACT. CONFIRMATION OF EXISTENCE AND EXACT LOCATION OF ALL SERVICES MUST BE OBTAINED FROM THE INDIVIDUAL UTILITIES BEFORE PROCEEDING WITH CONSTRUCTION.			
NO.	REVISIONS	DATE	BY

DESIGNED BY	JKH	CHECKED BY	HAK
DRAWN BY	DML	APPROVED BY	BWB
SCALE:		RELEASED FOR CONSTRUCTION	ORIGINAL SIGNED
HORIZONTAL	1:750		K. ZUREK
VERTICAL		DATE	2018 03 12

ENGINEER'S SEAL
ORIGINAL SIGNED BY H.A. KATZ 2018 03 12
CONSULTANT DRAWING NUMBER

THE CITY OF WINNIPEG
WATER AND WASTE DEPARTMENT
ENGINEERING DIVISION

2017 SEWER RENEWALS
BY CIPP LINING - CONTRACT NO. 3
ARMOUR CRESCENT (SOUTH LEG)
1ST MH W OF HARRIS BOULEVARD TO
MH AT HARRIS BOULEVARD

SHEET **4** OF **25**
CITY DRAWING NUMBER
11645