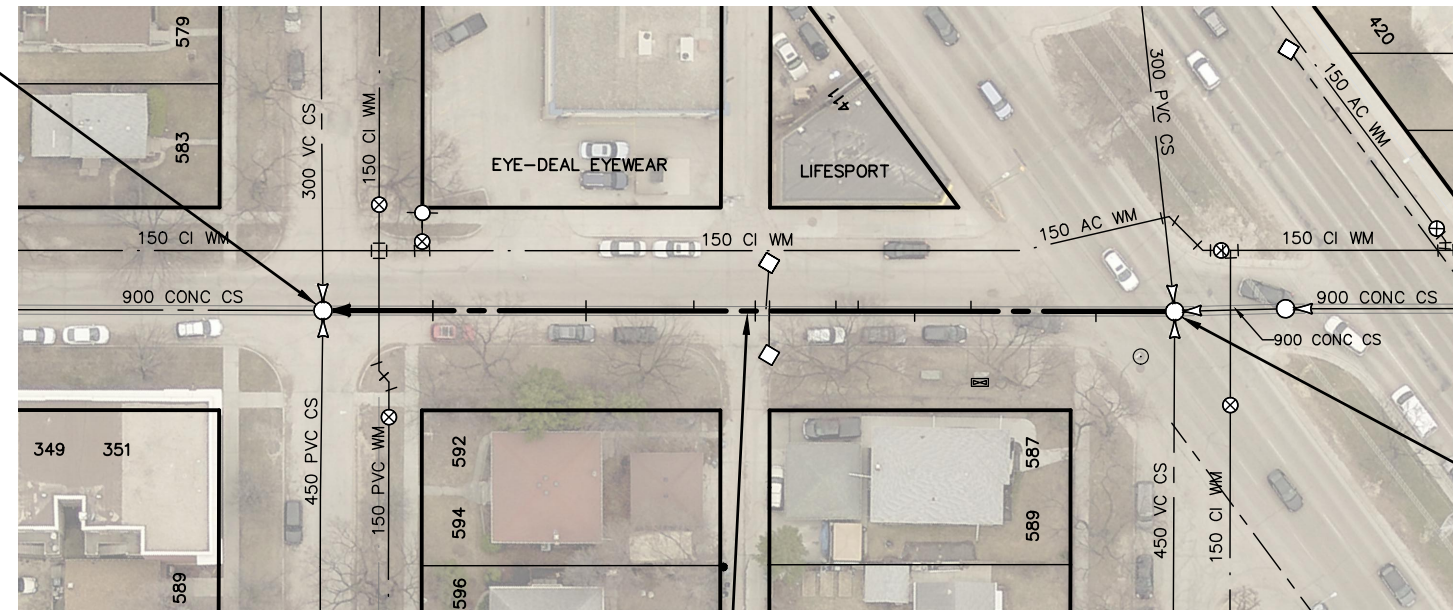


# DALY STREET N

S-MH60001565  
RIM 231.98  
INV E 224.23  
INV S 224.23  
INV N 224.23  
INV W 224.23



PEMBINA HWY

S-MH60007578  
RIM 232.26  
INV E 224.41  
INV W 224.41  
INV N 224.41  
INV S 224.41

FLEET AVE 84.4 OF 900 CONC CS TO BE LINED  
S-MA60009184  
(FULLY DETERIORATED)

GARWOOD AVE

SEWER JUNCTION INFORMATION FROM SEWER VIDEO INSPECTION SEWER ID S-MA60009184		
DISTANCE FROM MH ID S-MH60007578		
DISTANCE	DIAMETER	CLOCK
7.8	100	10
20.2	100	02
25.8	100	11
31.4	100	01
33.6	100	02
40.2	100	11
40.2	100	01
41.6	100	11
41.6	100	01
47.7	100	01
58.4	100	01
58.4	100	11
73.6	100	11
73.6	100	01

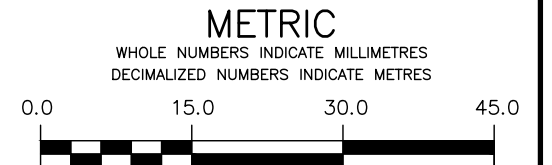
### WARNING

IF POWER EQUIPMENT OR EXPLOSIVES ARE TO BE USED FOR EXCAVATION ON THIS PROJECT THE CONTRACTOR MUST:

- 1) NOTIFY THE GAS COMPANY OF THE PROPOSED LOCATION OF EXCAVATION.
- 2) TAKE PRECAUTION TO AVOID DAMAGE TO GAS COMPANY INSTALLATIONS.

SEE PROVINCIAL REGULATION 210/72 FOR DETAILS

FOR INDEX SEE  
11643



### LOCATION APPROVED UNDERGROUND STRUCTURES

SUPV. U/G STRUCTURES COMMITTEE DATE

NOTE:

LOCATION OF UNDERGROUND STRUCTURES AS SHOWN ARE BASED ON THE BEST INFORMATION AVAILABLE BUT NO GUARANTEE IS GIVEN THAT ALL EXISTING UTILITIES ARE SHOWN OR THAT THE GIVEN LOCATIONS ARE EXACT. CONFIRMATION OF EXISTENCE AND EXACT LOCATION OF ALL SERVICES MUST BE OBTAINED FROM THE INDIVIDUAL UTILITIES BEFORE PROCEEDING WITH CONSTRUCTION.

B.M.	ELEV.			
NO.	REVISIONS	DATE	BY	



DESIGNED BY	JKH	CHECKED BY	HAK
DRAWN BY	DML	APPROVED BY	BWB
SCALE:		RELEASED FOR CONSTRUCTION	ORIGINAL SIGNED
HORIZONTAL	1:750		<b>K. ZUREK</b>
VERTICAL			
DATE	18/01/15	DATE	2018 03 12

ENGINEER'S SEAL

ORIGINAL  
SIGNED BY  
H.A. KATZ  
2018 03 12

CONSULTANT DRAWING NUMBER



**THE CITY OF WINNIPEG**  
WATER AND WASTE DEPARTMENT  
ENGINEERING DIVISION

2017 SEWER RENEWALS  
BY CIPP LINING - CONTRACT NO. 3  
**DALY STREET N**  
MH AT PEMBINA HIGHWAY TO  
MH AT FLEET AVENUE

SHEET 15 OF 25  
CITY DRAWING NUMBER

11656