

FORM A: BID
(See B8)

1. Contract Title SUPPLY AND DELIVERY OF A INDUSTRIAL TRACTOR LOADER
BACKHOE

2. Bidder

Name of Bidder

Usual Business Name of Bidder as it appears on Invoice (if different from above)

Street

City

Province

Postal Code

Email Address of Bidder

Facsimile Number

(Mailing address if different)

Street or P.O. Box

City

Province

Postal Code

GST Registration Number (if applicable)

The Bidder is:

(Choose one)

a sole proprietor

a partnership

a corporation

carrying on business under the above name.

3. Contact Person

The Bidder hereby authorizes the following contact person to represent
the Bidder for purposes of the Bid.

Contact Person

Title

Telephone Number

Facsimile Number

Email Address

4. Definitions

All capitalized terms used in the Contract shall have the meanings
ascribed to them in the General Conditions and D3.

5. Offer The Bidder hereby offers to perform the Work in accordance with the Contract for the price(s), in Canadian funds, set out on Form B: Prices, appended hereto.

6. Commencement of the Work The Bidder agrees that no Work shall commence until he/she is in receipt of a notice of award from the Award Authority authorizing the commencement of the Work.

7. Contract The Bidder agrees that the Bid Opportunity in its entirety shall be deemed to be incorporated in and to form a part of this offer notwithstanding that not all parts thereof are necessarily attached to or accompany this Bid.

8. Addenda The Bidder certifies that the following addenda have been received and agrees that they shall be deemed to form a part of the Contract:

No.		Dated	
_____		_____	_____
_____		_____	_____
_____		_____	_____

9. Time This offer shall be open for acceptance, binding and irrevocable for a period of sixty (60) Calendar Days following the Submission Deadline.

10. Indigenous Self-Declaration The City is requesting that Bidders identify if their business is at least 51% owned by one or more Indigenous persons of Canada.

YES, 51% or more Indigenous ownership

NO, it is not

This information is being gathered for statistical purposes only and will not be used for purposes of evaluation.

11. Signatures

The Bidder or the Bidder's authorized official or officials have signed this

_____ day of _____, 20_____ .

Signature of Bidder or
Bidder's Authorized Official or Officials

(Print here name and official capacity of individual whose signature appears above)

(Print here name and official capacity of individual whose signature appears above)

FORM B: PRICES
 (See B9)

SUPPLY AND DELIVERY OF AN INDUSTRIAL TRACTOR LOADER BACKHOE

UNIT PRICES

ITEM NO.	DESCRIPTION	SPEC. REF.	UNIT	QUANTITY	UNIT PRICE
1.	Industrial Tractor Hi-Rail Loader Backhoe 110HP	18036	Each	1	
1a.	Option 1: Attachments	18036	Each		
	Clam Bucket 4-in-1 (Loader)			1	_____
	Digging Bucket (Backhoe)			1	_____
	Tube Talon Attachment (Backhoe)			1	_____
	Hi-Rail Dolly Set			1	_____

 Name of Bidder

**FORM N: DETAILED SPECIFICATIONS 18036
INDUSTRIAL TRACTOR LOADER BACKHOE (110HP)**

1.0 DESCRIPTION OF EQUIPMENT

- 1.1 These specifications describe an **Industrial Tractor Loader Backhoe** and other equipment and features as specified herein. The specifications describe the supply and delivery of a trailer mounted, self-contained, diesel fueled Industrial Tractor Loader machine.
- 1.2 The **Industrial Tractor Loader Backhoe** shall be a new 2018 model year or newer.
- 1.3 The **Industrial Tractor Loader Backhoe** and all other items/components shall be the manufacturer's latest model. The equipment shall be furnished complete and ready for operation. Any parts or accessories not specifically mentioned, but which are required to complete and place the equipment and associated attachments in successful operation shall be furnished as though specifically mentioned in these specifications. The equipment and associated attachments, and all parts thereof, shall conform in strength and quality of material and workmanship, to the best standards and engineering practice of the industry.
- 1.4 It will be the responsibility of the Bidder to inform the City of any errors or omissions in these specifications, for under this Contract the Contractor shall be held responsible for the satisfactory operational function of the equipment.

2.0 OTHER SPECIFICATIONS AND STANDARDS

- 2.1 All applicable SAE standards form an integral part of these specifications and shall have precedence in any conflict concerning minimum acceptable standards.
- 2.2 The **Industrial Tractor Loader Backhoe** shall comply with the applicable regulations:

National Safety Mark, NSM = <http://www.tc.gc.ca/eng/acts-regulations/acts-road.htm>

Manitoba Safety and Health Act, Parts 12, 22 =
<http://web2.gov.mb.ca/laws/statutes/ccsm/w210e.php> and <http://www.gov.mb.ca/labour/safety/>

Canadian Standards Association, CSA = <http://www.csa.ca/about/Default.asp?language=english>

Under Writers of Canada, U/L = <http://www.ulc.ca/>

Society of Automotive Engineers, SAE = <http://www.sae.org/>

City of Winnipeg Lighting Visibility
Standard=<http://winnipeg.ca/matmgt/pdfs/PublicWorksEquipLightingVisibility.pdf>.

- 2.3 It will be the responsibility of the Bidder to inform the City of any deficiencies in these specifications, for under this Contract the Contractor shall be held responsible for the design, performance, reliability and satisfactory operational function of the units.

3.0 SERVICE FACILITY

- 3.1 For the purpose of warranty repairs, the Bidder shall have an authorized service facility located within 10 km of the boundaries of the City of Winnipeg. The facility, or a portion thereof, shall be dedicated to the service and maintenance of the type equipment being offered. Further to B9.1, Bidders shall provide a description of the service facility including, but not limited to, number of qualified service staff, years of service experience, and general service capabilities within three (3) Business Days upon request of the Contract Administrator.

3.2 If a suitable warranty facility is not available within 10 km of the boundaries of the City of Winnipeg, the Bidder may propose that the City of Winnipeg Repair Facility perform warranty work. Any Work performed by the City of Winnipeg Repair Facility shall be charged to the Contractor at the Facility's shop rate in effect at the time the work is performed **(for example, shop rate for 2017: \$109.00/hour and \$129.00/hour for overtime and callout).**

3.3 Location of the service facility located within 10 km of the boundaries of the City of Winnipeg.

The Bidder shall choose and fill in one of the Clauses listed below. --- 3.4) or 3.5)

3.4 Bidder's own facility location. **State the location of the service facility below.**

3.5 Bidder elects to have warranty work be performed by the City of Winnipeg. Bidder shall provide all warranty authorization processes.

4.0 **REFERENCES**

4.1 Provide five (5) references where this equipment is used in a working environment where climatic conditions are similar to the City of Winnipeg.

5.0 **MAKE & MODEL**

5.1 **State** make, year and model of the equipment bid- _____

6.0 **INSTRUCTIONS FOR COMPLETION OF SPECIFICATIONS**

6.1 Each bid will be evaluated based on adherence to all terms, conditions and requirements outlined in the Bid Opportunity package.

6.2 All items in these specifications must be answered indicating compliance or non-compliance. **BIDDERS SHALL STATE "YES" FOR COMPLIANCE OR STATE DEVIATION**, or give reply where requested to do so. Deviations shall be clearly stated and fully detailed. Alternatives will be considered subject to evaluation.

6.3 **EACH BIDDER IS REQUIRED TO FILL IN EVERY BLANK. FAILURE TO DO SO MAY BE USED AS A BASIS FOR REJECTION OF BID**

7.0 **PERFORMANCE RELIABILITY**

7.1 The responsibility for the design of the **Industrial Tractor Loader Backhoe**, its performance and reliability shall rest upon the Contractor.

7.2 The term "repeated failures" as used herein is defined to mean that the same component, subassembly, or assembly develops repeated defects, breakdowns and/or malfunctions rendering the vehicle inoperative, or requiring repeated shop correction, service and/or replacement during the warranty period applicable for said component, subassembly, of assembly. Minor items or ordinary service adjustments are not included, or considered under the scope of "repeated failures", as well as other factors, such as operational damage due

to accidents, misuse or lack of proper maintenance, service and lubrication attention by not following the manufacturer's preventative maintenance schedule.

7.3 Where the **Industrial Tractor Loader Backhoe** develops "repeated failures" in service, the Contractor shall make any necessary engineering changes, repairs, alterations or modifications in order to guarantee reliability of performance.

7.4 The equipment shall be capable of consistent top performance in City of Winnipeg Environment. Note: The City of Winnipeg has four seasons with ambient temperatures ranging from approximately 90°F (32°C) to -40°F (-40°C)

8.0 FUEL

8.1 Where applicable, all equipment must be fully fueled upon delivery (no exceptions).

9.0 QUALIFICATIONS OF MANUFACTURER & CONTRACTOR

9.1 The manufacturer of the **Industrial Tractor Loader Backhoe** shall have five (5) years continuous experience manufacturing the equipment.

9.2 The manufacturer shall have in effect a documented quality control program ensuring that the quality of materials and workmanship, including welding, conforms to the best standards and engineering practice of the industry.

9.3 The Contractor shall have five (5) years continuous experience servicing, repairing and maintaining **Industrial Tractor Loader Backhoe** of the type being offered.

10.0 SPECIFICATIONS:

ENGINE

10.1	Engine make & model	State	_____
10.2	Engine specification	Diesel, Emissions Tier IV Diesel Interim or Final, must meet current Emission Standards.	_____
10.3	Horse power	Approx. Net 110 hp. State.	_____
10.4	Torque	Net torque, State.	_____
10.5	Engine aspiration	State.	_____
10.6	Fuel shut off	Electric solenoid type.	_____
10.7	Fuel filter	With water separator.	_____
10.8	Oil filter	Full flow, spin-on type.	_____
10.9	Air cleaner	Dry cartridge type with dash mounted restriction indicator.	_____
10.10	Throttle	Hand operated with foot override.	_____
10.11	Exhaust	Muffled, vertical discharge with bend and 40° cut-off (rain cap unacceptable).	_____

10.12	Coolant	Extended life, protected to -40 ⁰ C.	_____
10.13	Engine block heater	Approx. 750 Watts.	_____
10.14	Cold weather starting aid	Glow plugs or air intake warmer, state type.	_____
10.15	Fuel tank	State capacity.	_____
10.16	Front radiator guard	Made from steel and painted, protects radiator from rocks and debris when using the front loader. Designed to permit servicing of radiator without being removed.	_____

ELECTRICAL/ LIGHTING/ SAFETY

10.17	Type	12-Volt, negative ground electrical system.	_____
10.18	Electric starter	With key starter switch.	_____
10.19	Batteries	Dual batteries, 1600CCA combined capacity.	_____
10.20	Battery disconnect switch (lockable)	Protected from the elements. Switch to be lockable with pad lock.	_____
10.21	Alternator	Approx. 150 Amp, state capacity.	_____
10.22	Combined stop and tail lights	Two (2).	_____
10.23	Signal lights with warning flashers	Two (2) front and two (2) rear.	_____
10.24	Warning flashers	Operable with key removed.	_____
10.25	Headlights	Two (2).	_____
10.26	Working lights	Front- four (4) front mounted, adjustable, located immediately below cab roof line. Rear-four (4) rear mounted, adjustable, located immediately below the cab roof line. Side-two (2) side mounted, located immediately below cab roof line.	_____
10.27	Light switches	Independent on/off switch for each pair of work lights, dash mounted, wired through ignition, labeled with permanent type, engraved style labels.	_____
10.28	Cab interior light	Interior light.	_____
10.29	Radio	AM/FM/CD or MP3.	_____

10.30	Radio installation provision	12 volt, 20Amp spate/independent circuit available at a spare circuit breaker, suitable for installation of a 2-way mobile radio.	_____
10.31	Horn	Operable from driving position and from backhoe position.	_____
10.32	Safety lighting (beacon)	Make and Model: Whelen L31 Series Super-LED, SAE Class 1 (or equivalent in accordance to B6) Blue/Amber (individual control) beacon, 360 degree visibility. Wired through ignition, lights shall be wired for separate amber and separate blue labelled independently "winter", "off", "summer". The winter mode will turn on both blue and the summer will only turn on the amber lights.	_____
10.33	Beacon guard	Ramped, heavy duty bolt-on metal guard, designed to permit servicing of beacon without being removed.	_____
10.34	Back-up alarm	Approx. 97 dB, factory installed, mounted to be protected from damage.	_____
10.35	Wiring	All locally installed accessories shall be color coded, loomed and properly secured. Splicing in any factory harness is unacceptable. All electrical power for locally supplied electrical components to be supplied from an OEM power distribution box. All joining of wires and electrical connectors shall be soldered and sealed with heat shrink tubing. All wiring for work lights and warning lights shall be supplied with no exposed wiring.	_____
10.36	LED lighting	All lighting LED, state .	_____
10.37	Slow moving sign	Grote 71152 (or equivalent in accordance to B6) with bracket mounted to rear of backhoe.	_____

TIRES, RIMS, FENDERS

10.38	Front tires	Michelin or Bridgestone radial or bias, (or equivalent in accordance to B6) state .	_____
10.39	Ply rating	State ply rating.	_____
10.40	Tread	R4, Industrial tractor.	_____

10.41	Rear tires	Size 21L-24, Michelin or Bridgestone radial or bias, (or equivalent in accordance to B6) state .	_____
10.42	Ply rating	State ply rating.	_____
10.43	Tread	R4, industrial tractor.	_____
10.44	Fenders (extensions)	Front and rear, rubber or polymer, state , material.	_____

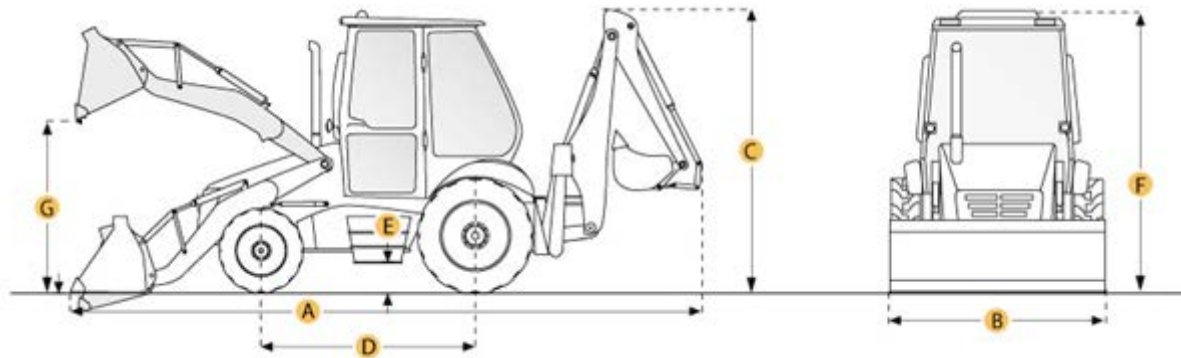
AXLES & BRAKES

10.45	Front axle	Driven type (4WD) with guarded drive shaft (limited slip differential).	_____
10.46	Rear axle	Differential lock, push button activation.	_____
10.47	Brakes	Wet disk type with individual pedals simultaneous or independent operations.	_____
10.48	Parking brake	Foot or hand operated, state type.	_____

TRANSMISSION

10.49	Type	Power-shift transmission with torque convertor, manual shift with power reverser, state .	_____
10.50	Shifting	Fully synchronized.	_____
10.51	Speeds forward	Four (4), state .	_____
10.52	Speeds reverse	Four (4), state .	_____
10.53	Power-shift	Direction reverser.	_____
10.54	Travel speed Max	Forward speed: approx. 24 mph (40 kph), state .	_____
		Reverse speed: approx. 24 mph (40 kph), state .	_____

DIMENSIONS



10.55	Overall transport length (A)	Approx. 24', state.	_____
10.56	Overall transport width (B)	Approx. 8', state.	_____
10.57	Overall transport height (C)	Approx. 12'5", state.	_____
10.58	Overall width	Stabilizer spread, outside edge of pad, state.	_____
10.59	Wheelbase (D)	Approx. 84", state.	_____
10.60	Ground clearance (E)	Approx. 12", state.	_____
10.61	Overall height (top of cab) (F)	Approx. 9', state.	_____
10.62	Operating weight (as bid)	Approx. 18,000lbs, (without attachments) state weight.	_____
10.63	Turning radius	Curb clearance with brakes applied, state.	_____

FRONT END LOADER

10.64	Lift capacity, full height	Approx. 8400lbs., state.	_____
10.65	Bucket breakout force	Approx. 13,000lbs., state.	_____
10.66	Dump clearance as bid (G)	Bucket @ 45 ^o approx. 108 inches, state	_____
10.67	Controls	Single lever with clutch disconnect button, return –to-dig and float.	_____
10.68	Self-levelling bucket	With level indicator.	_____
10.69	Wear plate (s)	Required to prevent bucket heel from rubbing on ground with bolt-on cutting edge in place.	_____
10.70	Lashing ring	Heavy duty, steel weld-on hook with spring mounted clasp, top-center mounted at front of loader bucket.	_____
10.71	Loader safety prop bar	For safety when servicing loader arms.	_____

10.72 Hydraulic function For attachment growth, 3rd function valve. High flow pump, approx. 43 gpm Couplers and controls shall be provided as required on all machines to accommodate, a brush mower attachment etc. _____

10.73 Hydraulic quick attach For loader bucket. In cab controls to release pins from bucket. _____

10.74 OEM ride control **State.** _____

BACKHOE

10.75 Type Centre pivot with extendable dipper-stick. _____

10.76 Maximum digging depth Approx. 19'6", **state** digging depth. _____

10.77 Overall reach from rear axle centerline Approx. 27', **state** reach. _____

10.78 Digging force Bucket cylinder (SAE), with 24 inch bucket approx. 15,000lbs., **state.** _____

10.79 Digging force Crowd cylinder (SAE), with dipper-stick retracted approx. 10,500lbs., **state.** _____

10.80 Lifting capacity with stick at 12ft reach Approx. 4,400lbs. **state.** _____

10.81 Controls SAE excavator style, pilot operated hydraulic joystick controls. _____

10.82 Multi-brand Quick coupler attachment bracket For quick attachment of all buckets and hydraulic hammers, **state** make and model being bid. _____

10.83 360° rotation and tilt attachment coupler Hydraulic quick attach. _____

10.84 Attachment bracket Permit use of two (2) bucket positions. _____

10.85 Attachment bracket Permit bucket, and bucket position changes. _____

10.86 Certified lifting hooks All buckets to be complete with certified lifting hooks. _____

10.87 Stabilizer pads Designed for use on railways. _____

10.88 Front counterweight Supplied as to provide proper machine balance and loading characteristics. _____

10.89 Replaceable bushings and grease fittings At backhoe pivot points, cylinder rod and closed ends, and bucket links. _____

10.90 Auxiliary hydraulics For attachment growth, 3rd function valve. High flow pump, approx. 43 gpm Couplers and controls shall be provided as required on all machines to accommodate, BTE tube tie talon etc. _____

ATTACHMENTS

Note: Options to be priced only as indicated on Form B: Prices.

Option 1: unit to have the following attachments

10.91 **Clam bucket** 4 in 1 combination, with bolt-on cutting edge. Approx. width 93" with 1.4 yd³ capacity. Replaceable bolt-on cutting edges for all three edges of the bucket. (Quick Attach) _____

10.92 **24 inch digging bucket** 24 inch heavy duty digging bucket with replaceable pin-on teeth, complete with required attachment pin(s) and certified lifting hooks. Backhoe to be delivered with 24 inch digging bucket (w/teeth) installed. _____

10.93 **Hydraulic thumb (backhoe)** Factory installed, **state** _____

10.94 **BTE (or equivalent) Extendable Tube talon (backhoe)** Extendable with rotozip for removing and inserting railway ties. _____

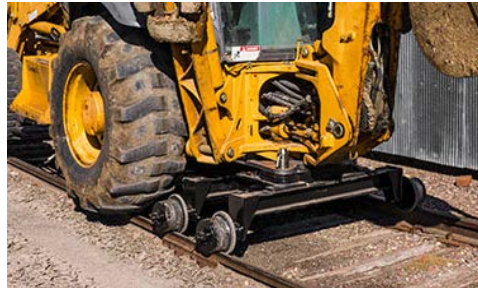


Hi-Rail Dolly Set

10.95 Hi-Rail Make **State.** _____

10.96 Hi-Rail Model **State.** _____

10.97 Rear dolly _____
Four (4) wheel dolly with rear tower bracket. Rear tower bracket mounted to the rear of loader backhoe. With mechanical lock pins. Backhoe to be delivered with bracket installed.



10.98 Bucket wheels _____
Heat treated and lubricated rail wheels with mechanical lock pins (stowable). Backhoe to be delivered with bucket wheels installed.



10.99 Rail Travel Speed _____
Approx. 24 mph (40 kph), **state.**

10.100 Guide Wheels _____
Approx. 8" in diameter.

10.101 Track Gauge _____
Standard, 56.5 inches.

10.102 Brakes _____
Rubber tire friction rail travel and braking.

OPERATOR CAB

10.103 Type-ROPS _____
Roll-over protective structure complete with pressurized cab, OSHA certified or equivalent in accordance with B6.

10.104 Insulation and headliner _____
For sound suppression and severe weather/climate.

10.105 Floor covering _____
Rubber matting, throughout.

10.106 Seat _____
Cushioned, adjustable bucket type with arm rests, cloth upholstery air suspension with retractable seat belt.

10.107 Ride control _____
Factory installed.

10.108 All windows _____
Tinted safety glass with appropriate markings for all panes and opening type where applicable.

10.109 Ignition keys _____
Three (3) sets required per machine.

10.110	Doors	One (1) each side with spring assisted strut, lockable with common key.	_____
10.111	Interior rear-view mirror	Adjustable.	_____
10.112	Windshield wipers	Intermittent preferred, requires front and rear.	_____
10.113	Heater/defroster	Heavy duty, hot water type with multi-speed fan, capable of keeping all windows clear at -40 ⁰ C.	_____
10.114	Window fans	Two (2) with guards.	_____
10.115	Air conditioning	Factory installed with under hood compressor. (Note: roof mounted air conditioners are not acceptable).	_____
10.116	Steps	Open grate style.	_____
10.117	Toolbox	Lockable, state location.	_____
10.118	Instrumentation	Coolant temperature-gauge with audible alarm. Engine oil pressure-gauge or warning light with audible alarm. Engine hour meter-non resettable type. Tachometer. Fuel gauge.	_____
10.119	Noise Level, interior	Approx. 85 dB(A), measured in accordance with SAE J336, state noise level.	_____
10.120	Fire extinguisher	Five (5) lbs. High volume ABC type, State location.	_____

GREASING SYSTEM

10.121	Greasing system	Parallel NLGI-2 (or equivalent in accordance with B6) heavy-duty automatic lubrication system, connected to all grease points, outfitted with automatic low level shut-off. With an in cab monitor showing system status such as low level, low pressure and/ or fault code display.	_____
10.122	Pump reservoir	a) Approx. 6kg pump reservoir. Parameters preprogrammed to accommodate 500 hour service intervals. Pump must have correct filler adapter fitting for City of Winnipeg maintenance staff to refill reservoir. b) Access to refill the pump reservoir shall be via remote fill line of min. 3/8" hose to accommodate a refill procedure at ground level.	_____ _____

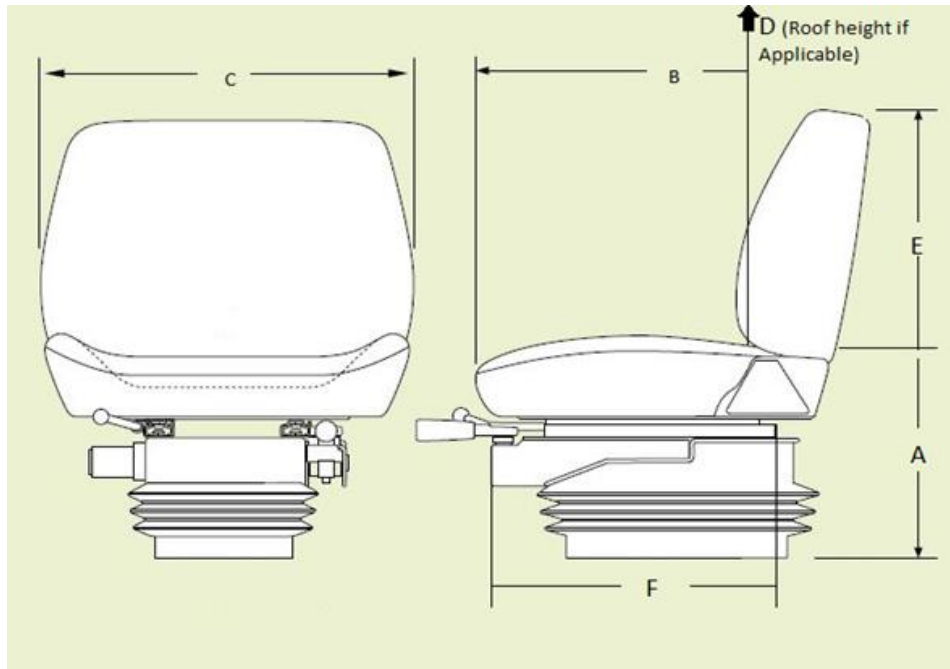
- 10.123 Power input
- a) System power connection 12-Volt to ignition source with an accessible fuse protection. Greasing system to shut down when the engine is turned off. _____
- b) Bidder to suggest possible anti idle protection feature providing it does not affect Machine OEM warranty. _____
- 10.124 Grease lines
- a) Extreme Low temperature (example: Parker Blue Stripe or equivalent in accordance with B6) steel braided rubber hose. With compatibility to accommodate max working pressure of 5000psi. Each hose on all connected points must be outfitted with #4 JIC crimped ends. Thread sealant for each fitting must be used. _____
- b) In extreme environment areas such as the lower machine articulator pin, and front bucket pins, heavy wall pipe must be fitted. _____
- 10.125 Greasing points
- a) **State**, quantity of greasing points connected to the automatic lubrication system. _____
- b) **State**, quantity of remote grease lines points that cannot be connected to the automatic lubrication system. _____
- 10.126 Grease fittings
- Each connected component must have a manual grease zerk either at each injector or at the connected component to manually lubricate. _____
- 10.127 Injector manifolds
- Mounted secure in an area away from debris impact. Special guards should be fitted for injector manifolds and hoses, in areas of consistent debris impact (snow, ice, etc.). _____

11.0 **OPERATOR STATION ERGONOMICS**

Entry/ Exit

- 11.1 First step entry height **State**, height of first step in inches. _____
- 11.2 First handhold entry height **State**, first handhold entry height in inches. _____
- 11.3 Access to equipment **State**, door opening height in inches. _____
- 11.4 Access to equipment **State**, door opening width in inches. _____
- 11.5 Designed to prevent slipping Anti-slip steps/handholds **(Y or N)?** _____

Seat (use below diagram to answer questions)



- | | | | |
|-------|---|---|-------|
| 11.6 | Sitting height range from floor (where feet rest) (A) | State , seat height range in inches. | _____ |
| 11.7 | Seat length/depth (B) | State , seat length/depth in inches. | _____ |
| 11.8 | Seat width (C) | State , seat width in inches. | _____ |
| 11.9 | Cab height from seat to roof (if applicable) (D) | State , cab height range in inches. | _____ |
| 11.10 | Back rest height (E) | State , back rest height in inches. | _____ |
| 11.11 | Seat travel range (F) | State , seat travel in inches. | _____ |
| 11.12 | Lumbar support | Is lumbar support provided (Y or N)? | _____ |
| 11.13 | Head rest | Is head rest provided (Y or N)? | _____ |
| 11.14 | Seat is made of breathable material | State , type of seat material. | _____ |

Operation

- | | | | |
|-------|--|--|-------|
| 11.15 | Reaching distance to usual work | State , reaching distance in inches. | _____ |
| 11.16 | Maximum reaching distance | State , maximum reach distance in inches. | _____ |
| 11.17 | Adjustable pedals (accelerator/brake/clutch) | Are pedals adjustable (Y or N)? | _____ |
| 11.18 | Adjustable steering wheel | Is steering wheel adjustable (Y or N)? | _____ |
| 11.19 | Adjustable shoulder belt | Is belt adjustable and anchored (Y or N)? | _____ |

12.0 **WARRANTY**

12.1 All warranty information shall be detailed and include all exclusions. The Contractor shall provide all published warranty information upon delivery of the equipment. Bidder shall state all warranty information. _____

12.2 Basic coverage **State:** _____

12.3 Power train **State:** _____

12.4 Hydraulics warranty **State:** _____

12.5 Batteries warranty **State:** _____

12.6 Tires warranty **State:** _____

12.7 Electrical warranty **State:** _____

13.0 **DELIVERY**

13.1 Delivery Point: The complete unit shall be serviced, ready for operation and delivered F.O.B. with the freight prepaid, including invoice and N.I.V.S. (if applicable) to the WFMA 185 Tecumseh Street, Winnipeg MB. The successful bidder shall be notified by the Contractor Administrator the delivery address prior to issuance of the purchase order. _____

13.2 Delivery Time: **Twelve (12) calendar weeks** from the date of award. Equipment shall be delivered between 8:00 am and 2:00 pm on Business Days. _____

13.3 Delivery Contact: The Contractor shall contact the Contract Administrator prior to delivery of the equipment. _____

13.4 P.D.I: A pre-delivery inspection shall be performed by the Contractor on the equipment. Proof upon inspection including completed check list _____

14.0 **MANUALS**

14.1 Manuals supplied under this Contract shall cover the complete equipment including all components thereof, CD or USB flash drive is preferred where available. _____

14.2 The following manuals shall be supplied with the units when delivered:

a) Operator's manual – Two (2) per unit (one operator manual shall be sent to the Equipment Operator Training Branch) _____

b) Parts and service manuals – one (1) complete sets including preventative maintenance schedules. CDs or USB flash drive are preferred. _____

15.0 **FIRST SERVICE PREVENTATIVE MAINTENANCE KIT**

15.1 In order to assure minimum downtime of the equipment in future service, the Contractor shall provide one (1) complete replacement set of new OEM filters for each unit purchased. The set of required filters shall include (if applicable to the equipment type) air, fuel, oil, cab and hydraulic, or otherwise all known necessary common replacement filters required for the first preventative maintenance servicing. _____

15.2 The Contractor shall provide a list of factory recommended lubricants to be used with the equipment, as well as a complete cross reference guide for all warranty approved lubricants and filters that can be used during preventative maintenance servicing. _____

16.0 **PARTS/LABOUR PRICING**

16.1 Bidder to provide City of Winnipeg Parts Discount % Pricing from retail parts pricing. **State percentage discount-** % _____

16.2 Bidder to provide City of Winnipeg Labor Discount % Pricing from Retail shop labor rate. **State percentage discount-** % _____