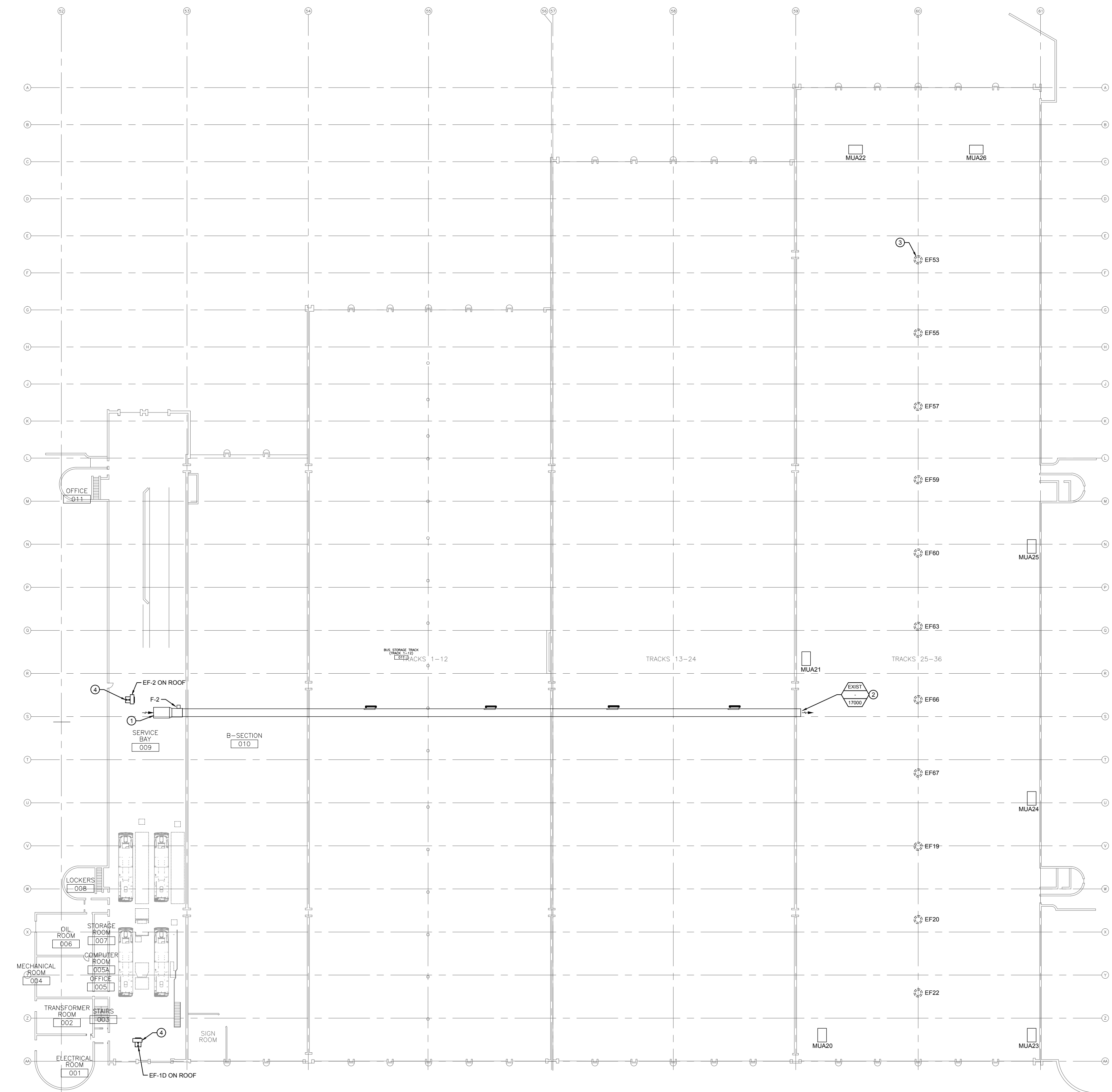
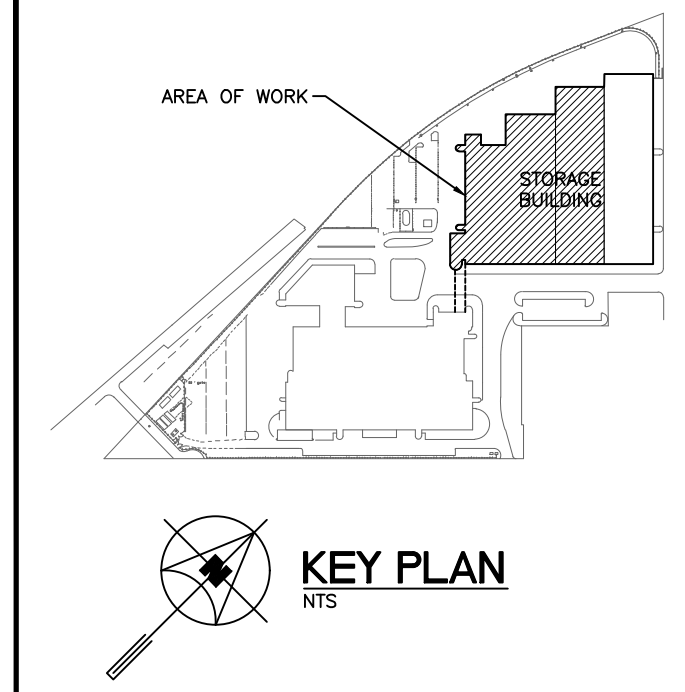


**GENERAL NOTES**

- A. THIS BUILDING MAY CONTAIN ASBESTOS. REFER TO FRONT END SPECIFICATIONS FOR FURTHER INFORMATION.
- B. REFER TO ROOF DETAILS AND SPECIFICATIONS FOR ALL NEW AND GAPPED OPENINGS.

**KEY NOTES**

1. BALANCE THE EXISTING TRANSFER FAN, F-2 TO 1700 CFM. FAN MAY BE BALANCED USING THE EXISTING VFD OR THROUGH THE FLEXIBLE BELTS.
2. BALANCE THE EXISTING TRANSFER AIR OUTLET TO THE FLOW INDICATED.
3. BALANCE THE EXISTING EXHAUST FAN, EF-53, TO 9939 CFM.
4. REFER TO SPECIFICATION FOR SEQUENCE MODIFICATION OF EF-2 AND EF-10.



1 MAIN FLOOR PLAN - STORAGE TRACKS REBALANCING - VENTILATION  
SCALE: 1/32" = 1'-0"

NO.	Description	BY	DATE
0	ISSUED FOR CONSTRUCTION	JH	09/11/18



770 Bradford Street  
Winnipeg, Canada  
T 204 775 0363  
SMSeng.com

**SMS**  
ENGINEERING

Project Title  
**CITY OF WINNIPEG FORT ROUGE  
TRANSIT BASE - STORAGE TRACK  
13-24 - MECHANICAL UPGRADE**

WINNIPEG MANITOBA

Drawing Title  
**MAIN FLOOR PLAN - STORAGE  
TRACKS REBALANCING -  
VENTILATION**

Drawn By	Checked By	Approved By
JC/AS	XZ	JH
Scale	Date	Project No.
AS NOTED	NOVEMBER, 2018	18-240-01
Revision Number	Drawing Number	Sheet Order
0	M2.7	12 OF 12