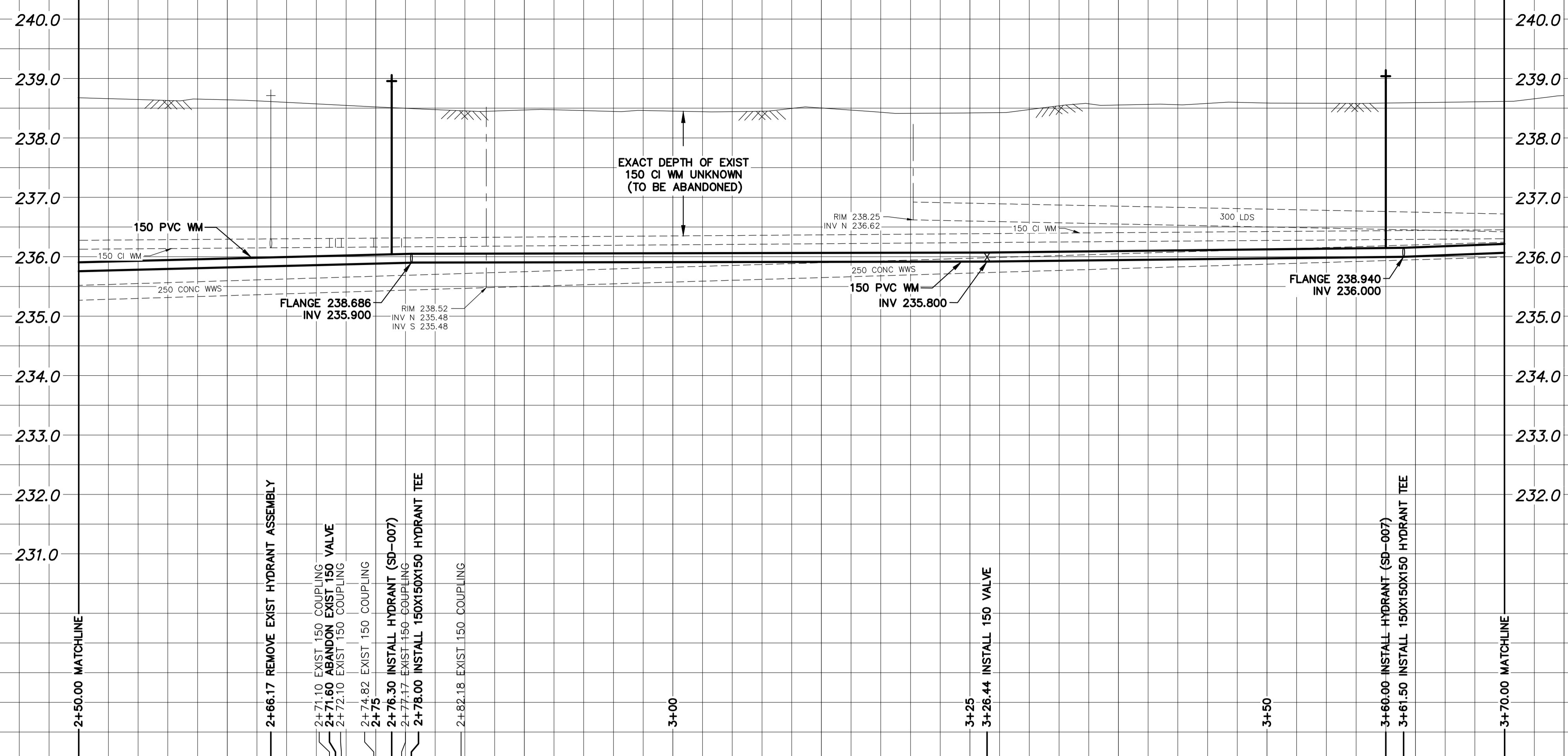


WATER SERVICE INFORMATION

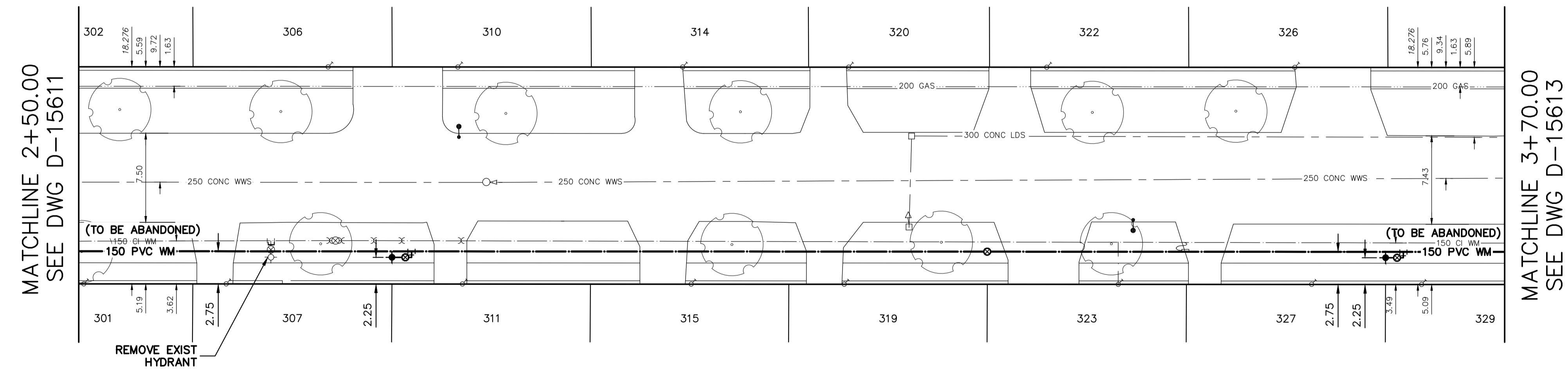
ADDRESS	SIZE (mm) MATERIAL (STREET)	SIZE (mm) MATERIAL (PROP.)	SHORT & LONG MEASUREMENT	CORP. LOCATION	REMARKS
269 HARCOURT ST	-	-	-	-	RECONNECT SERVICE
273 HARCOURT ST	-	20	OPP NL HSE	-	RECONNECT SERVICE
276 HARCOURT ST	20	CU	40.343>NNL LODGE AVE	5.8 S OF S/C	RECONNECT SERVICE
277 HARCOURT ST	20	CU	44.225>NNL LODGE AVE	0.3 S OF S/C	RECONNECT SERVICE
278 HARCOURT ST	20	CU	48.988>NNL LODGE AVE	OPP OF S/C	RECONNECT SERVICE
282 HARCOURT ST	12	LEAD	56.653>NNL LODGE AVE	10.3 S OF S/C	RENEW TO P W/20 CU
283 HARCOURT ST	20	CU	64.091>NNL LODGE AVE	0.9 N OF S/C	RECONNECT SERVICE
288 HARCOURT ST	-	20	1.29 SSL HSE	-	RECONNECT SERVICE
287 HARCOURT ST	-	20	3.21 NSL HSE	-	RECONNECT SERVICE
290 HARCOURT ST	20	CU	82.534>NNL LODGE AVE	1.3 N OF S/C	RECONNECT SERVICE
291 HARCOURT ST	20	CU	98.276>NNL LODGE AVE	OPP OF S/C	RECONNECT SERVICE
293 HARCOURT ST	-	20	1.68 NSL HSE	-	RECONNECT SERVICE
294 HARCOURT ST	-	20	8.75 NSL HSE	-	RECONNECT SERVICE
295 HARCOURT ST	-	20	OPP SL HSE	-	RECONNECT SERVICE
298 HARCOURT ST	-	20	8.22 SNL HSE	-	RECONNECT SERVICE
301 HARCOURT ST	-	20	3.24 NSL HSE	-	RECONNECT SERVICE
302 HARCOURT ST	20	CU	150.402>NNL LODGE AVE	3.7 N OF S/C	RECONNECT SERVICE
306 HARCOURT ST	-	25	0.95 SNL HSE	-	RECONNECT SERVICE
307 HARCOURT ST	-	20	0.99 SSL HSE	-	RECONNECT SERVICE
310 HARCOURT ST	-	20	1.75 NSL HSE	-	RECONNECT SERVICE
311 HARCOURT ST	-	20	1.07 SSL HSE	-	RECONNECT SERVICE
314 HARCOURT ST	-	20	125.667>SSL BRUCE AVE	-	RECONNECT SERVICE
315 HARCOURT ST	-	20	144.959>NNL LODGE AVE	-	RECONNECT SERVICE
319 HARCOURT ST	-	20	106.047>SSL BRUCE AVE	-	RECONNECT SERVICE
320 HARCOURT ST	-	20	1.27 SSL HSE	-	RECONNECT SERVICE
322 HARCOURT ST	-	20	92.738>SSL BRUCE AVE	-	RECONNECT SERVICE
323 HARCOURT ST	-	20	2.92 SSL HSE	-	RECONNECT SERVICE
326 HARCOURT ST	20	CU	76.060>SSL BRUCE AVE	OPP OF S/C	RECONNECT SERVICE
327 HARCOURT ST	-	20	4.24 SNL HSE	-	RECONNECT SERVICE
328 HARCOURT ST	-	20	70.012>SSL BRUCE AVE	-	RECONNECT SERVICE
329 HARCOURT ST	-	20	7.38 NSL HSE	-	RECONNECT SERVICE
329 HARCOURT ST	-	20	55.143>SSL BRUCE AVE	-	RECONNECT SERVICE
329 HARCOURT ST	-	20	7.78 NSL HSE	-	RECONNECT SERVICE
329 HARCOURT ST	-	20	53.761>SSL BRUCE AVE	-	RECONNECT SERVICE
329 HARCOURT ST	-	20	OPP SL HSE	-	RECONNECT SERVICE
329 HARCOURT ST	-	20	44.548>SSL BRUCE AVE	-	RECONNECT SERVICE

* SERVICES TO BE RENEWED TO R. ALL OTHERS TO BE RECONNECTED



NOTE: CHAINAGES SHOWN ARE ALONG E. R. OF HARCOURT STREET

HARCOURT STREET

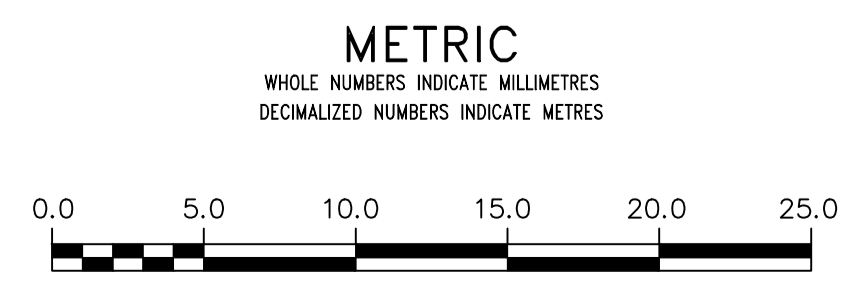


MATCHLINE 2+50.00
SEE DWG D-15611

MATCHLINE 3+70.00
SEE DWG D-15613

FOR INDEX SEE D-15610

NOTE: ALL VALVES TO BE INSTALLED COUNTERCLOCKWISE TO CLOSE



WARNING
IF POWER EQUIPMENT OR EXPLOSIVES ARE TO BE USED FOR EXCAVATION ON THIS PROJECT THE CONTRACTOR MUST:
1) NOTIFY THE GAS COMPANY OF THE PROPOSED LOCATION OF EXCAVATION.
2) TAKE PRECAUTION TO AVOID DAMAGE TO GAS COMPANY INSTALLATIONS.
SEE PROVINCIAL REGULATION 210/72 FOR DETAILS

LOCATION APPROVED
UNDERGROUND STRUCTURES
SUPV. U/G STRUCTURES COMMITTEE DATE
NOTE:
LOCATION OF UNDERGROUND STRUCTURES AS SHOWN ARE BASED ON THE BEST INFORMATION AVAILABLE BUT NO GUARANTEE IS GIVEN THAT ALL EXISTING UTILITIES ARE SHOWN OR THAT THE GIVEN LOCATIONS ARE EXACT. CONFIRMATION OF EXISTENCE AND EXACT LOCATION OF ALL SERVICES MUST BE OBTAINED FROM THE INDIVIDUAL UTILITIES BEFORE PROCEEDING WITH CONSTRUCTION.

VERTICAL DATUM: CGVD28 (HT2.0 Geoid)			
HORIZONTAL DATUM: NAD83 (June 1990), Zone 14			
NO.	REVISIONS	DATE	BY

DESIGNED BY	RG	CHECKED BY	SC
DRAWN BY	RS	APPROVED BY	KZ
SCALE:		RELEASED FOR CONSTRUCTION	K. ZUREK
HORIZONTAL	1:250	DATE	2020-04-24
VERTICAL	1:50	DATE	2020-04-28
PLOT DATE: 2020 04 28		DATE 2020-04-24	

ENGINEER'S SEAL
ORIGINAL SIGNED BY
S.R.J.
COURNOYER
2020/04/24
CONSULTANT DRAWING NUMBER

THE CITY OF WINNIPEG
WATER AND WASTE DEPARTMENT
ENGINEERING DIVISION
2020 WATER MAIN RENEWALS
CONTRACT 9
HARCOURT STREET
150 N OF LODGE AVENUE TO
270 N OF LODGE AVENUE
SHEET 4 OF 9
CITY DRAWING NUMBER
D-15612