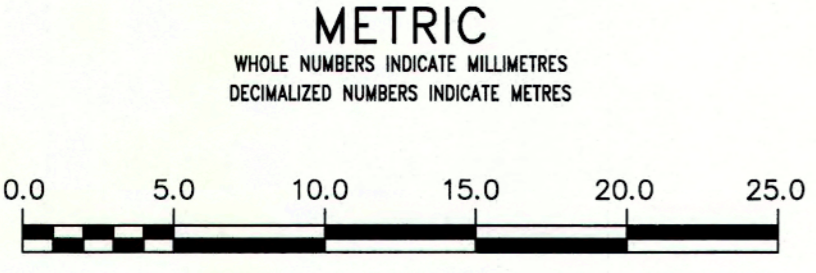
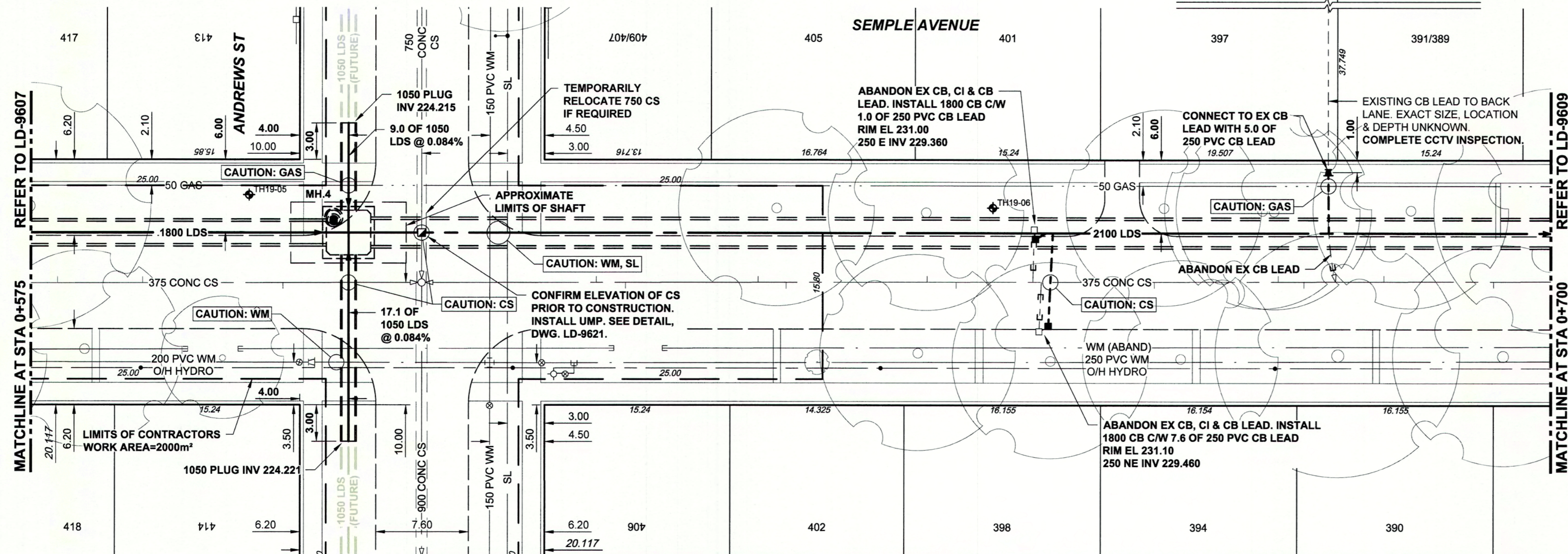
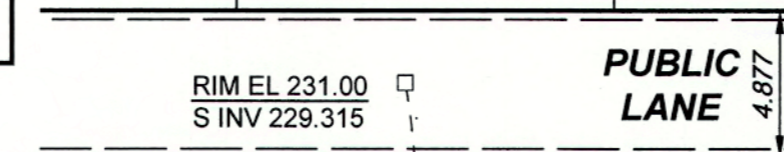


NOTE: CHAINAGES SHOWN ARE ALONG S. R. OF SEMPLE AVENUE



**WARNING**  
 IF POWER EQUIPMENT OR EXPLOSIVES ARE TO BE USED FOR EXCAVATION ON THIS PROJECT THE CONTRACTOR MUST:  
 1) NOTIFY THE GAS COMPANY OF THE PROPOSED LOCATION OF EXCAVATION.  
 2) TAKE PRECAUTION TO AVOID DAMAGE TO GAS COMPANY INSTALLATIONS.  
 SEE PROVINCIAL REGULATION 210/72 FOR DETAILS

**LOCATION APPROVED UNDERGROUND STRUCTURES**  
 SUPV. U/G STRUCTURES COMMITTEE DATE  
 NOTE:  
 LOCATION OF UNDERGROUND STRUCTURES AS SHOWN ARE BASED ON THE BEST INFORMATION AVAILABLE BUT NO GUARANTEE IS GIVEN THAT ALL EXISTING UTILITIES ARE SHOWN OR THAT THE GIVEN LOCATIONS ARE EXACT. CONFIRMATION OF EXISTENCE AND EXACT LOCATION OF ALL UTILITIES MUST BE OBTAINED FROM THE INDIVIDUAL UTILITIES BEFORE PROCEEDING WITH CONSTRUCTION.

B.M. ELEV.	
CONSTRUCTION COMPLETION DATE: YYYY MM DD	
ISSUED FOR CONSTRUCTION	19/12/23 ADL
NO.	REVISIONS

**AECOM**

DESIGNED BY: JAT  
 CHECKED BY: [Signature]  
 DRAWN BY: ADL  
 APPROVED BY: [Signature]  
 SCALE: HORIZONTAL 1:250  
 VERTICAL 1:50  
 DATE: 2019 12 20  
 PLOT DATE: 2019 12 20

**ENGINEERS GEOSCIENTISTS MANITOBA**  
 Certificate of Authorization  
 AECOM Canada Ltd.  
 No. 4671 Date: Dec 23, 2019

**THE CITY OF WINNIPEG**  
 WATER AND WASTE DEPARTMENT  
 ENGINEERING DIVISION

JEFFERSON EAST COMBINED SEWER RELIEF  
 CONTRACT 5 - SEMPLE TRUNK SEWER  
 SEMPLE AVENUE  
 160m EAST OF MCGREGOR STREET TO  
 99m WEST OF POWERS STREET

SHEET 16 OF 30  
 QTY DRAWING NUMBER  
 LD-9608