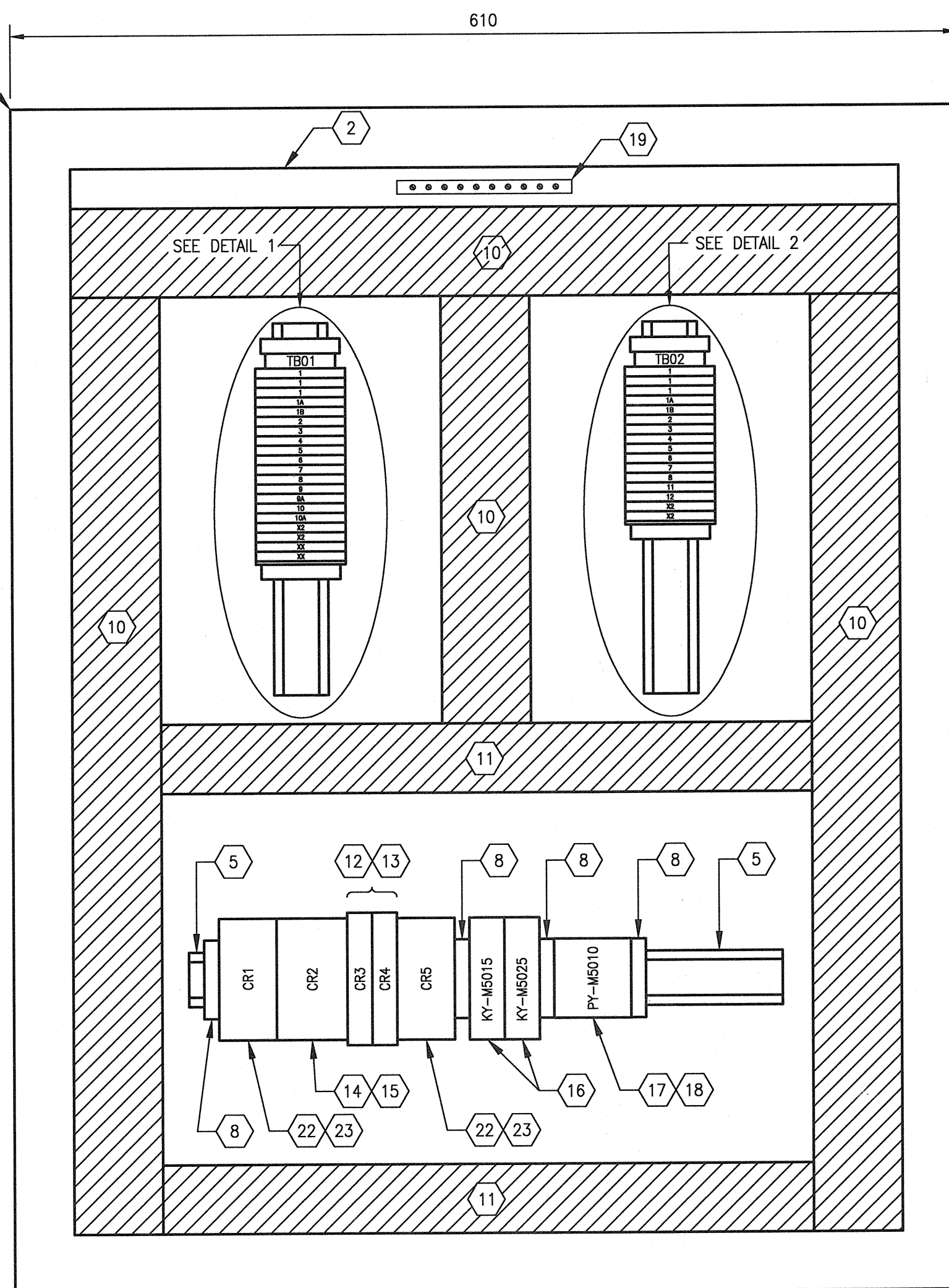
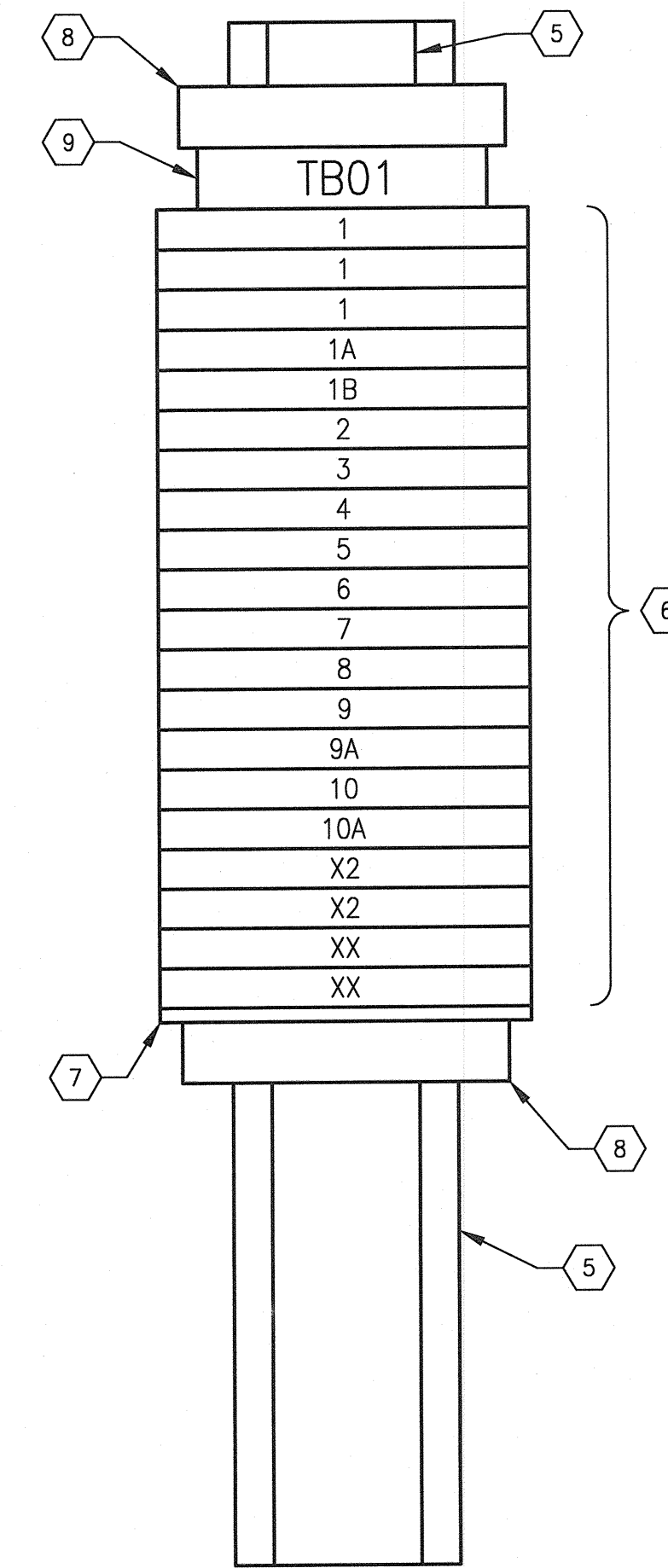


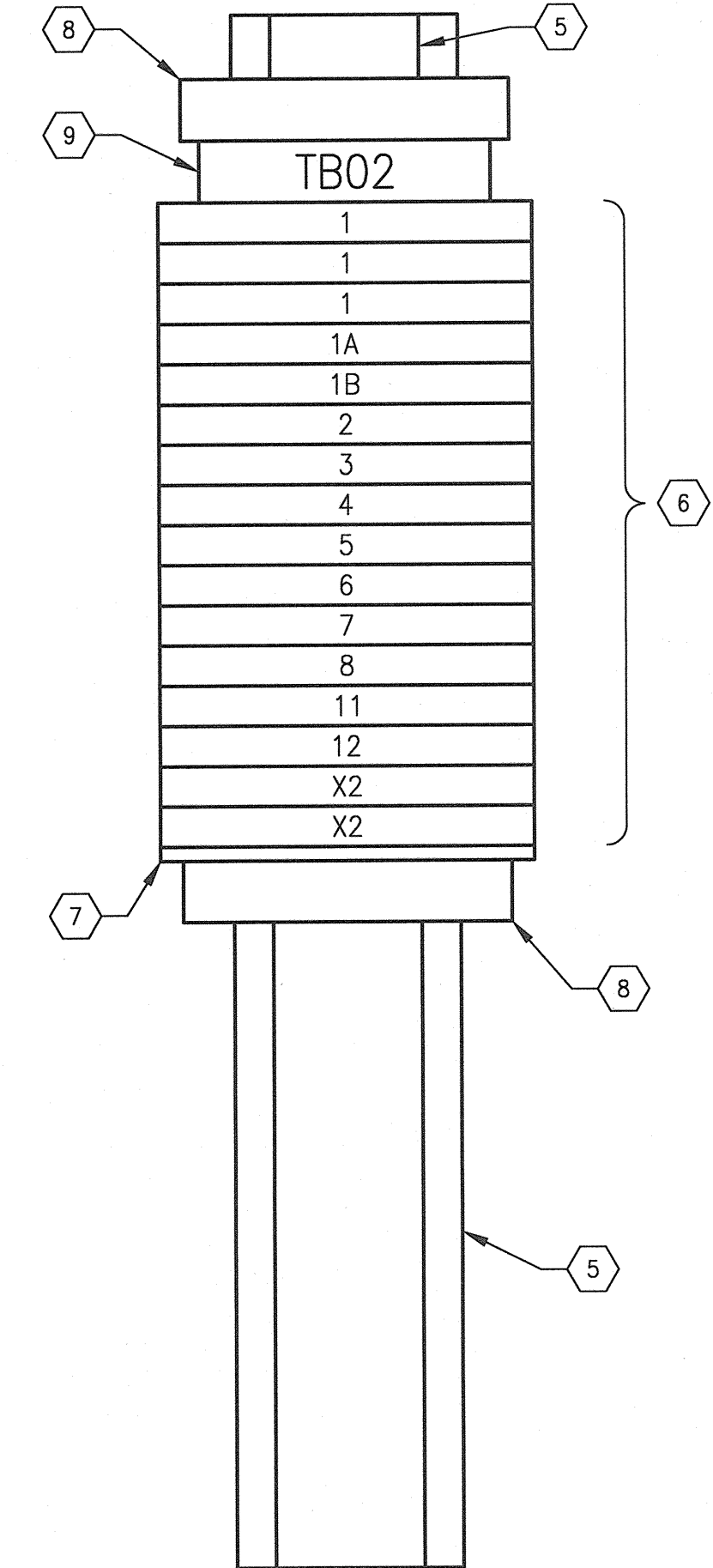
LCP-M500 EXTERIOR PANEL VIEW
SCALE: 1 : 3



LCP-M500 INTERIOR PANEL VIEW
SCALE: 1 : 3



DETAIL 1
SCALE: NTS



DETAIL 2
SCALE: NTS

BILL OF MATERIALS

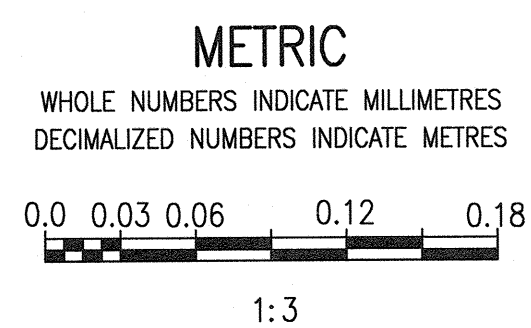
ITEM	QTY	DESCRIPTION	MANUFACTURER	CATALOG NUMBER
1	1	SINGLE DOOR TYPE 12, WALL MOUNTED ENCLOSURE 762x610x152	HOFFMAN	A302406LP
2	1	BACKPAN	HOFFMAN	A30P24
3	2	SELECTOR SWITCH, 3-POSITION, MAINTAINED, 1 N/O, 1 N/C	ALLEN BRADLEY	800T-J2A
4	2	CLOSING BUTTON, GREY	ALLEN BRADLEY	800T-N1
5	AS REQ'D	35mm DIN RAIL	PHOENIX CONTACT	0801733
6	AS REQ'D	FEED-THROUGH TERMINAL	PHOENIX CONTACT	3046184
7	AS REQ'D	TERMINAL END PLATE	PHOENIX CONTACT	3047141
8	AS REQ'D	TERMINAL END CLAMP	PHOENIX CONTACT	1201442
9	AS REQ'D	TERMINAL BLOCK MARKER	PHOENIX CONTACT	1004348
10	AS REQ'D	NARROW SLOT WIRING DUCT, 2.25"x3.12"	PANDUIT	-
11	AS REQ'D	NARROW SLOT WIRING DUCT, 1.75"x3.12"	PANDUIT	-
12	2	RELAY, 120 VAC, SPDT, LED, 10A	OMRON	G2R-1-SN 120 VAC(S)
13	2	RELAY BASE, SPDT	OMRON	P2RF-05-S
14	1	RELAY, 120 VAC, 4PDT, LED, 10A	OMRON	LY4N-120 VAC
15	1	RELAY, BASE, 4PDT	OMRON	PTF14A-E
16	2	MULTI-FUNCTION HIGH PERFORMANCE TIMING RELAY	ALLEN BRADLEY	700-FSH3VU23
17	1	ALTERNATING RELAY, 120 VAC	TIME MARK	261-DXT-120
18	1	8-PIN SOCKET	TIME MARK	51x120
19	1	GROUND BAR, 8 TAP	ILSCO	D167-8
20	AS REQ'D	LAMACOIDS		
21	2	PILOT LIGHT, AMBER, 120 VAC, LED	ALLEN BRADLEY	800T-QH2A
22	2	RELAY, 120 VAC, 3PDT, 10A	OMRON	LY3-120 VAC
23	2	RELAY BASE, 3PDT	OMRON	PTF11A-E

GENERAL NOTES:

- ALL POWER AND 120 VAC WIRING TO BE TEW/MTW 300V, 105°C INSULATION, STRANDED COPPER, 12 AWG OR LARGER WHERE CURRENT REQUIREMENTS DICTATE AS PER CEC REQUIREMENTS.
- ALL 24 VDC CONTROL WIRING TO BE TEW/MTW 300V, 105°C INSULATION, STRANDED COPPER, 16 AWG.
- COMPONENTS ARE TO BE LABELED AS SHOWN ON THE DRAWINGS.
- TEST ALL WIRING AND COMPONENTS FOR FUNCTIONAL OPERATION, CORRECT CONNECTION, CONTINUITY AND INSULATION INTEGRITY. DOCUMENT ALL TEST RESULTS.
- ALL MAJOR COMPONENTS INSIDE THE PANEL ARE TO BE LABELED WITH LAMACOIDS IN ACCORDANCE WITH MAJOR DESCRIPTIONS ON THE DRAWINGS.
- PROVIDE WIRE BARREL FERRULES FOR ALL WIRING.
- ALL TERMINAL BLOCKS SHALL BE NUMBERED AS SHOWN IN THE DRAWINGS, COMPLETE WITH GROUP LABELING.
- ALL WIRES SHALL BE MARKED AS INDICATED ON THE DRAWINGS.

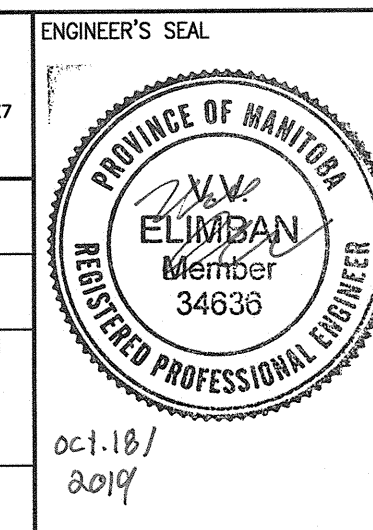
LAST SAVE: 2019/10/30 - 10:39am
 PATH: M:\661472\ENGC\481C\DD - General DWG\01 - McPhillips\1-0640M-A0035-001-00.dwg

DRAWING NUMBER	REFERENCE DRAWINGS
1-0640M-E0073	MOTOR STARTER SCHEMATIC, AC2
1-0640M-E0072	MOTOR STARTER SCHEMATIC, AC1
1-0640M-E0042	PANELBOARD SCHEDULE
1-0640M-E0041	ELECTRICAL EQUIPMENT PLAN, LOWER LEVEL
1-0640M-E0036	SINGLE LINE DIAGRAM, MCC-M730E



NO.	REVISIONS	DATE	DESIGN	CHECK
00	ISSUED FOR TENDER AND CONSTRUCTION	2019/10/18	VE	BC

		SNC-LAVALIN INC. 148 Nature Park Way Winnipeg, MB, Canada R3P 0X7 204-786-8590	
DESIGNED BY: V. ELIMBAN	CHECKED BY: B. CLEVEN	DRAWN BY: J. GRAGASIN	APPROVED BY: D. BECKER
SCALE: AS SHOWN		ISSUED FOR CONSTRUCTION BY: A. WEISS	
DATE: 2019/03/29		DATE: 2019/10/18	
CONSULTANT NO.:			



THE CITY OF WINNIPEG
 WATER AND WASTE DEPARTMENT
 MCPHILLIPS PUMPING STATION
 PANEL LAYOUT
 LCP-M500 (AC1 AND AC2)
 INSTRUMENT AIR COMPRESSOR CONTROL PANEL
 CITY DRAWING NUMBER: **1-0640M-A0035** SHEET: **001** REV: **00** SIZE: **A1**