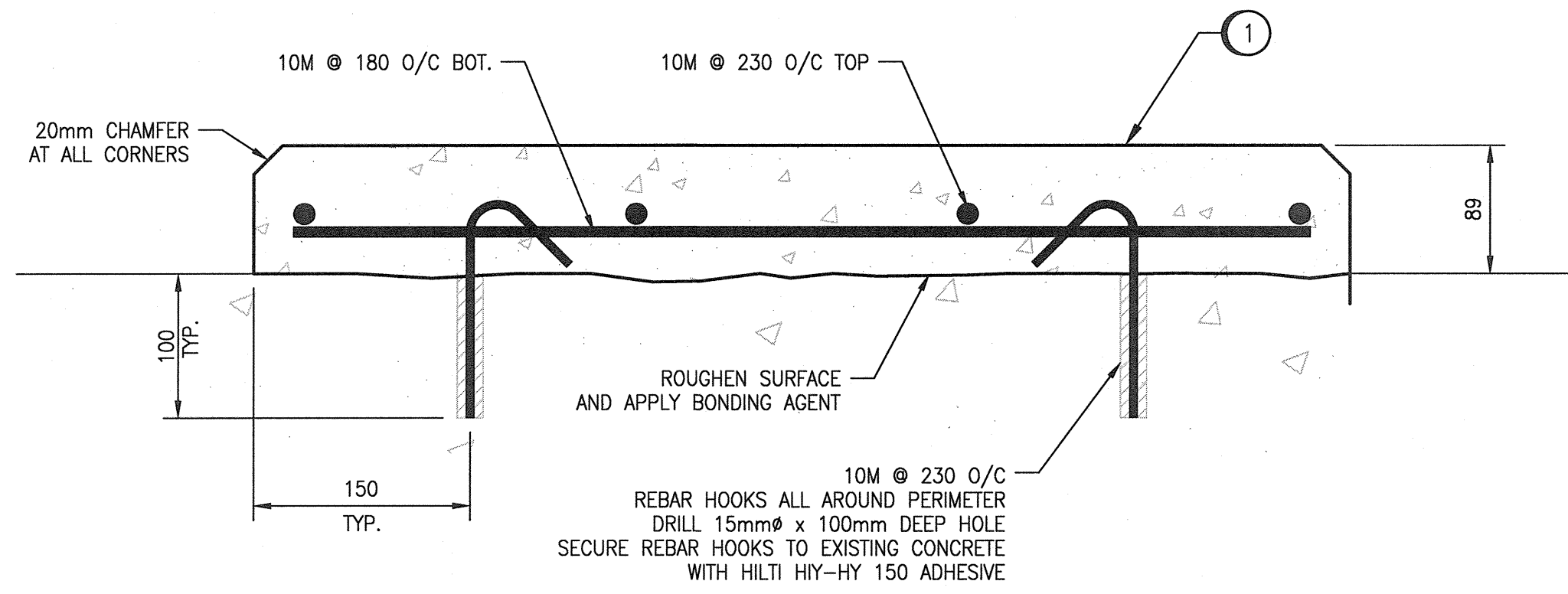


PLAN: HOUSEKEEPING PAD
SCALE: 1:4



SECTION: HOUSEKEEPING PAD
SCALE: 1:4

GENERAL NOTES:

DESIGN LOAD

1. THE HOUSEKEEPING PAD SHOWN IS NOT STRUCTURAL. THE SUPPORTING STRUCTURE UPON WHICH THE HOUSEKEEPING PAD IS INSTALLED SHALL BE CAPABLE OF SUPPORTING ALL LOADS AND DYNAMIC EFFECTS.
2. THE HOUSEKEEPING PAD HAS NOT BEEN DESIGNED FOR CORROSIVE ENVIRONMENTS AND MODIFICATION TO SUIT THE INSTALLED ENVIRONMENT IS BY OTHERS IF NEEDED.

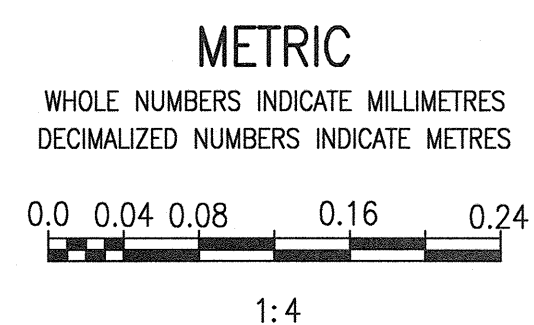
CONCRETE

1. WORK, MATERIALS AND TESTING SHALL BE IN CONFORMANCE WITH CSA A23.1, AND CSA A23.2.
2. CONCRETE SHALL BE READY MIXED, CONFORMING TO CSA A23.1 (ALTERNATIVE 1), AND AS NOTED HEREIN:
CEMENT TYPE: GU
CONCRETE COMPRESSIVE STRENGTH @ 28 DAYS: 30 MPa
MAXIMUM AGGREGATE SIZE: 20 MM
MAXIMUM SLUMP: 100 MM
AIR CONTENT: 0% TO 3%
W/C RATIO: 0.45 MAXIMUM
CLASS OF SULPHATE AND CHLORIDE EXPOSURE: S-3 AND C-3
3. REINFORCING STEEL SHALL BE NEW BILLET GRADE STEEL MEETING THE REQUIREMENT OF CSA G30.18, GRADE 400.
4. SUPPORT REINFORCING STEEL ON SUFFICIENT SUPPORT CHAIRS TO MAINTAIN CONCRETE COVER OF 50mm.
5. REMOVE ALL LOOSE AND DELETERIOUS MATERIAL FROM REINFORCING STEEL.
6. TOLERANCES SHALL BE AS STIPULATED IN ACI 315.
7. SATURATE THE CONCRETE SURFACE FOR ONE HOUR PRIOR TO APPLYING THE BONDED CONCRETE TOPPING. PROVIDE A SATURATED SURFACE DRY CONDITION.
8. APPLY LATEX BONDING AGENT IN ACCORDANCE WITH MANUFACTURER'S PRINTED INSTRUCTIONS. BONDING AGENT TO BE DARAWELD 'C'.
9. PROVIDE A WET 'BURLAP' CURE FOR 7 DAYS MIN.
10. EXPOSED CONCRETE SHALL BE SEALED WITH MEADOWS SEALTIGHT CS-309.
11. ALL WORK TO BE EXECUTED IN A NEAT WORKMANLIKE MANNER.

SPECIFIC NOTES:

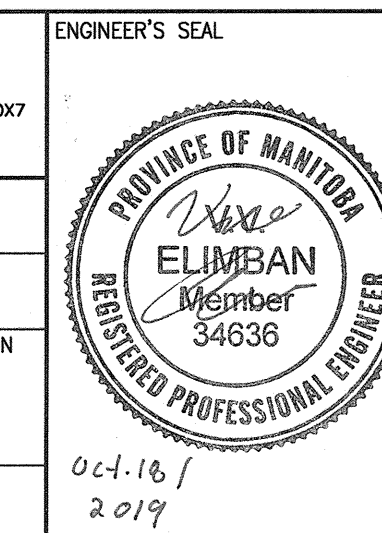
1. ALL CABLE OPENINGS TO BE FRAMED OUT ACCORDING TO LOCATION OF CABLE TERMINATIONS ON MCC-M710 BEFORE POURING THE PAD.

1-0660M-E0013	ELECTRICAL EQUIPMENT PLAN, PUMP ROOM
DRAWING NUMBER	REFERENCE DRAWINGS



NO.	REVISIONS	DATE	DESIGN	CHECK
00	ISSUED FOR TENDER AND CONSTRUCTION	2019/10/18	SB	BC

 SNC-LAVALIN INC. 148 Nature Park Way Winnipeg, MB, Canada R3P 0X7 204-786-8080	
DESIGNED BY: S. BOGHOSIAN	CHECKED BY: B. CLEVEN
DRAWN BY: J. GRAGASIN	APPROVED BY: D. BECKER
SCALE: 1:4	ISSUED FOR CONSTRUCTION BY: A. WEISS
DATE: 2019/08/12	DATE: 2019/10/18
CONSULTANT NO.:	



 THE CITY OF WINNIPEG WATER AND WASTE DEPARTMENT			
TACHE BOOSTER PUMPING STATION			
PLAN AND SECTIONS TYPICAL HOUSEKEEPING PAD DETAILS			
CITY DRAWING NUMBER 1-0660M-E0010	SHEET 001	REV. 00	SIZE A1