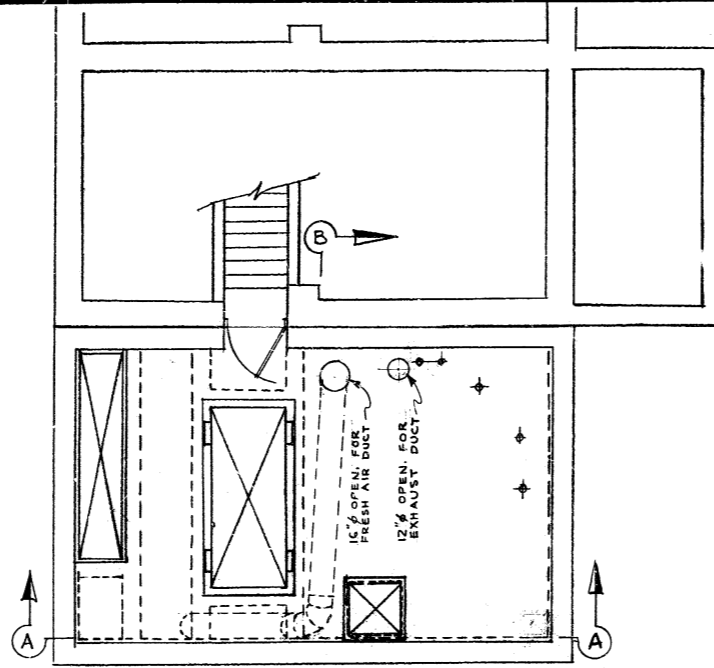
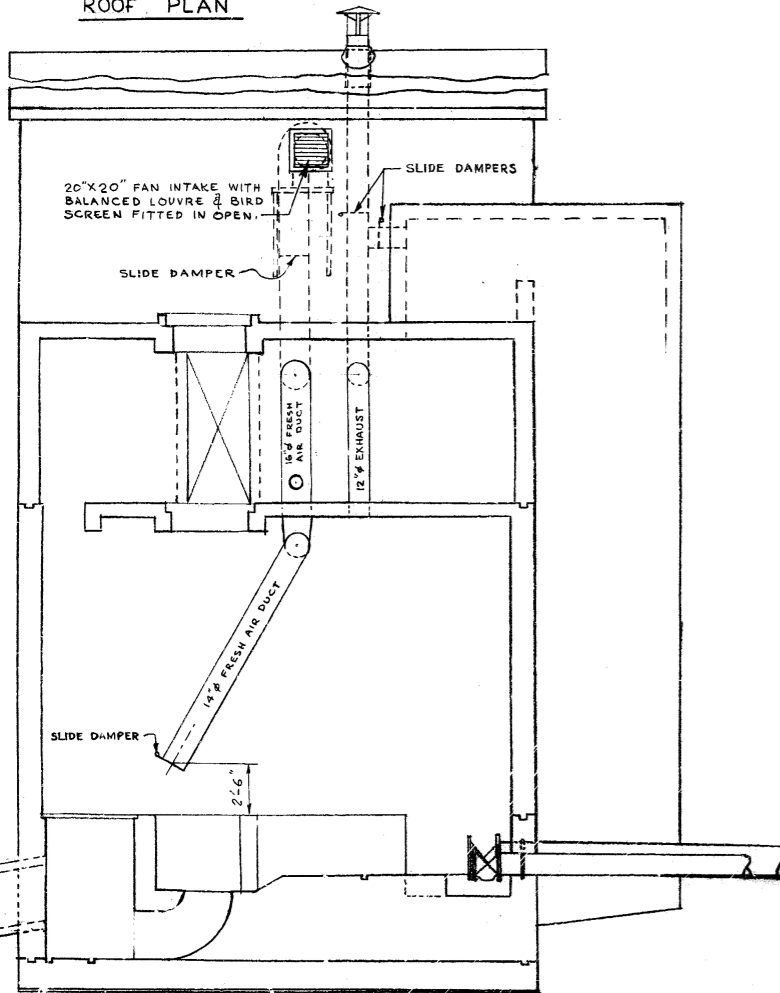


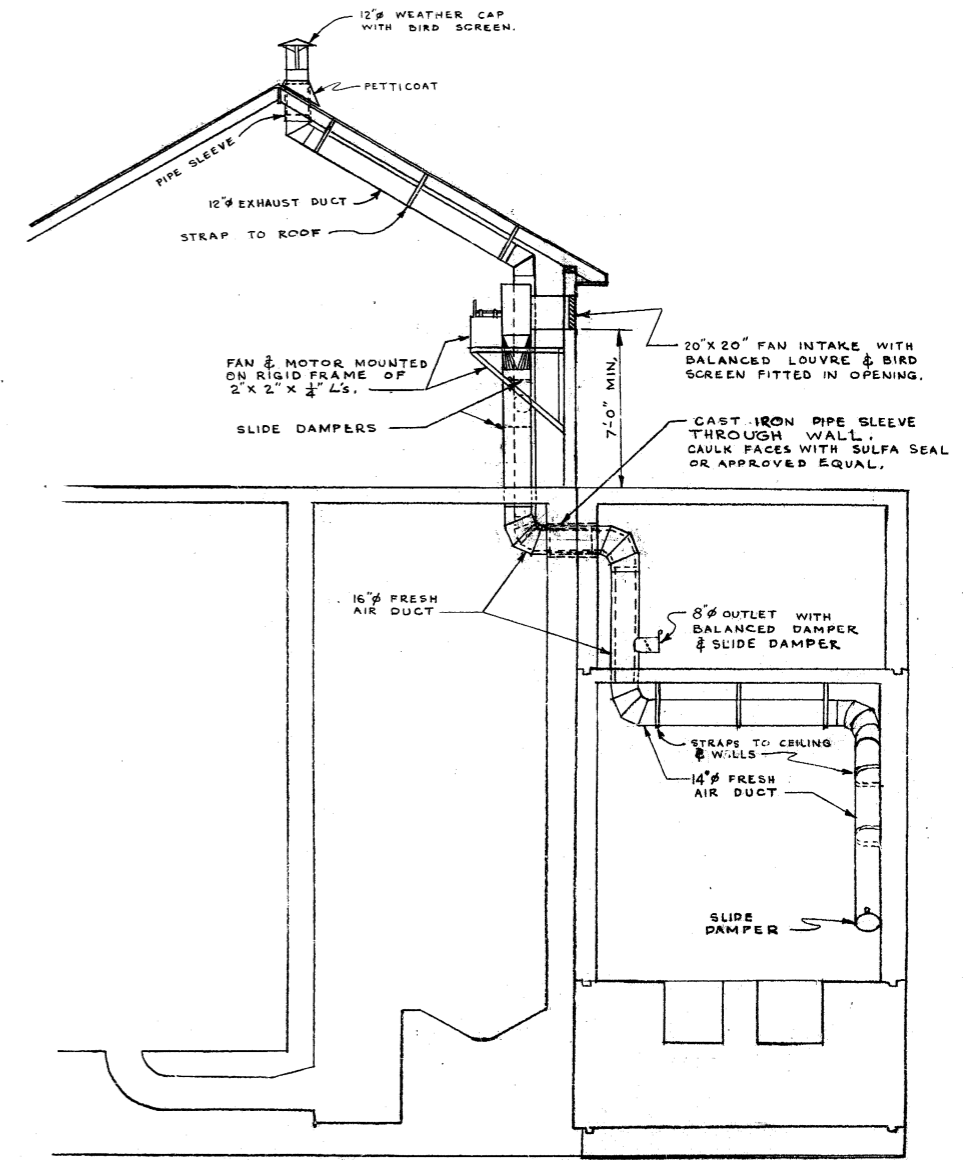
ROOF PLAN



MOTOR RM. FL. PLAN



SEC. A-A.

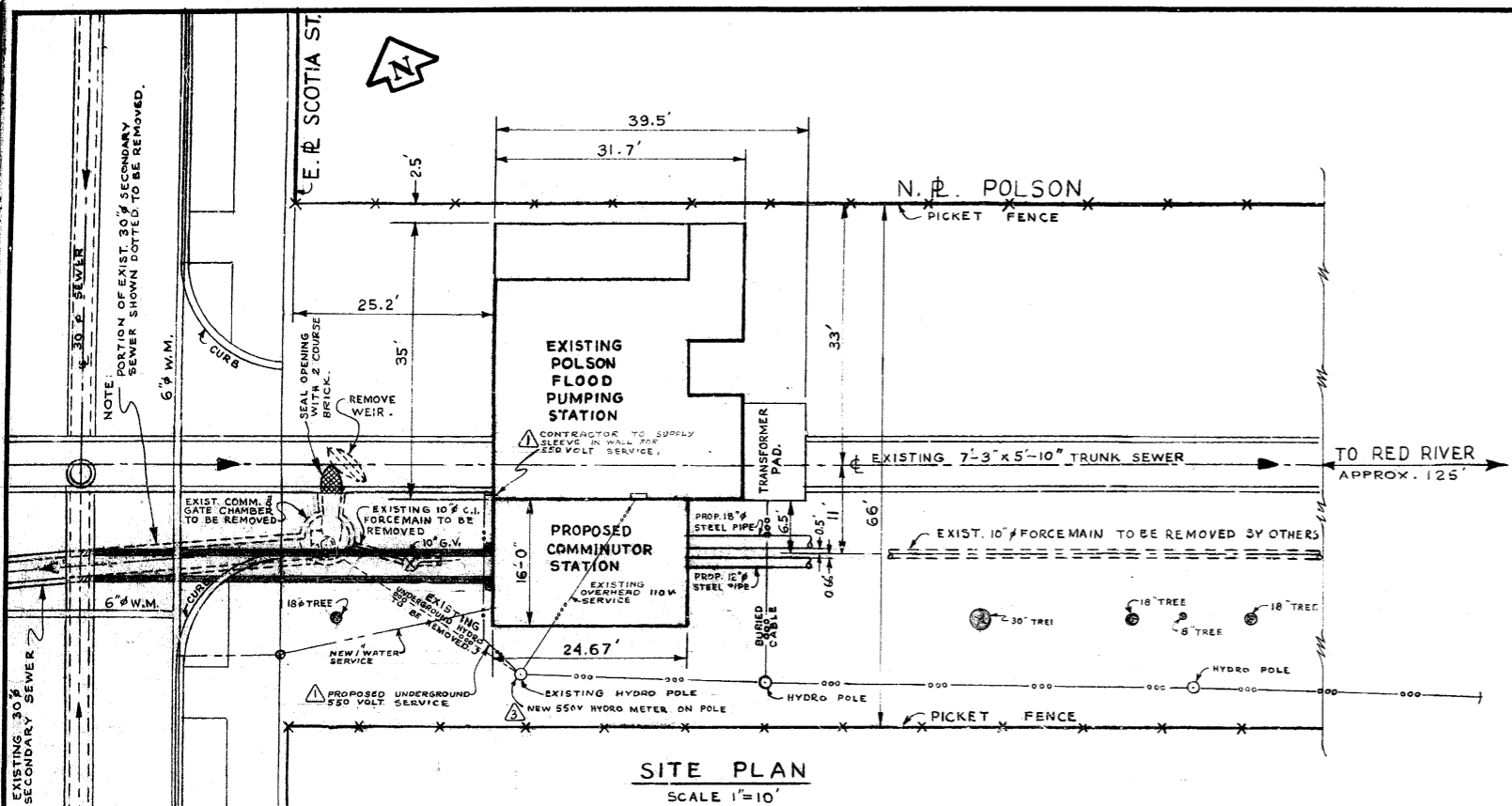


SEC. B-B



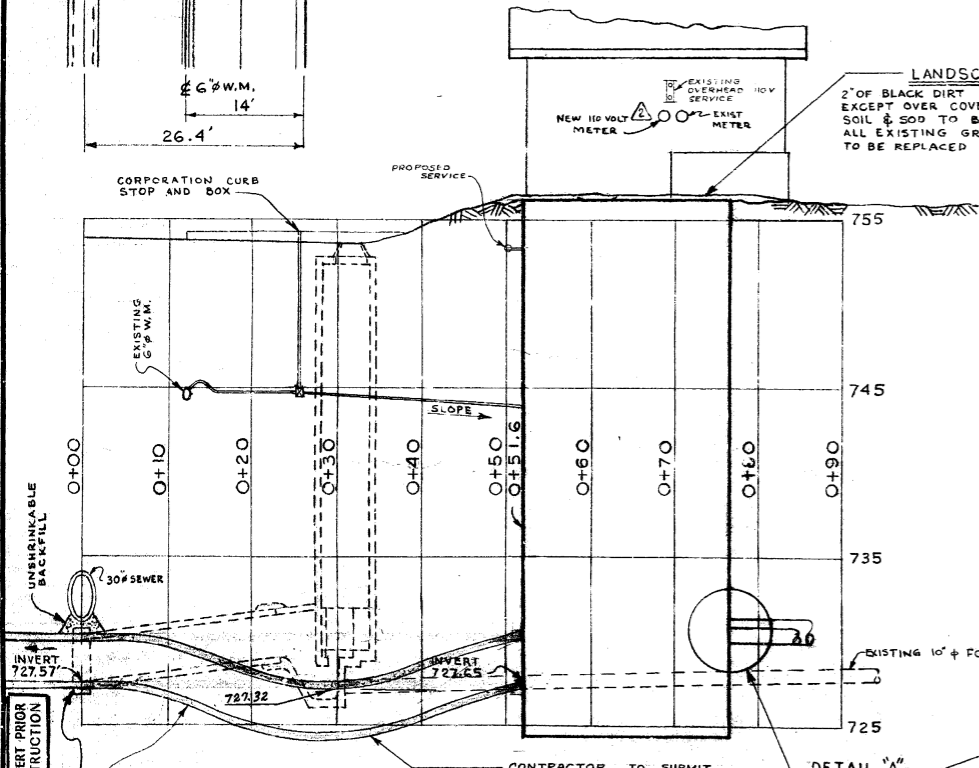
THE METROPOLITAN CORPORATION OF GREATER WINNIPEG <b>WATERWORKS &amp; WASTE          DISPOSAL DIVISION</b> N. S. BUSBIS - DIRECTOR	SEWAGE DISPOSAL DEPT. POLSON COMMINUTOR STA.	DES. R. GIRLING CHK'D. <i>[Signature]</i> ENR. H. BUXTON DATE 28 DEC 64	SCALE $\frac{1}{4} = 1'-0"$
	<b>VENTILATION          DETAILS</b>	ENG. DES. <i>[Signature]</i> ENR. WASTE <i>[Signature]</i>	DRAWING NO. <b>514</b>





**SITE PLAN**  
SCALE 1"=10'

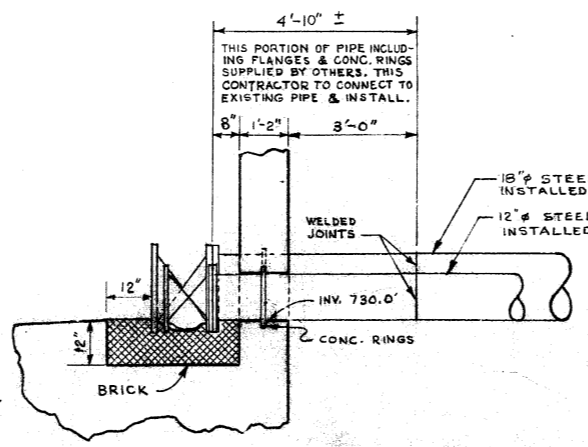
- NOTES**
- 1 PRECAST CONCRETE SEWER PIPE TO HAVE RUBBER GASKET JOINTS
  - 2 550 VOLT SERVICE  
CONTRACTOR TO SUPPLY CONDUIT FROM MAIN BREAKER TO CITY HYDRO TRENCH OUTSIDE WALL OF EXISTING FLOOD PUMPING STATION. CITY HYDRO WILL SUPPLY & INSTALL CABLE FROM POWER SERVICE TO MAIN BREAKER & MAKE CONNECTION.
  - 3 110 VOLT SERVICE  
CONTRACTOR TO SUPPLY & INSTALL CONDUIT & WIRING TO SERVICE HEADS IN SOUTH OUTSIDE WALL OF FLOOD PUMPING STA. SUPERSTRUCTURE. CITY HYDRO TO CONNECT TO 110 VOLT POWER SERVICE.



**PROFILE**

HOR. SCALE 1"=10'  
VERT. " " = 5'

REFERENCE DWG. NO'S. 49, 52, 117 & 161.



**DETAIL "A"**

CONNECTION OF EXISTING 12" & 18" STEEL PIPING TO COMM. CHAMBER  
SCALE 1/2"=1'-0"

NO.	DESCRIPTION	DATE	BY
1	NOTES 2 & 3 ADDED, AS PER ADDENDUM NO. 1	7 JAN 65	IB
2	NOTE CHGD. FROM NEW HYDRO METERS ON POLE TO NEW SUBV HYDRO METER ON POLE, AS PER ADDENDUM NO. 1	6 JAN 65	IB
3	LOCATION OF NEW 110V METER AS PER ADDENDUM NO. 1	6 JAN 65	IB
4	UNDERGROUND POWER SUPPLY AS PER ADDENDUM NO. 1	6 JAN 65	IB



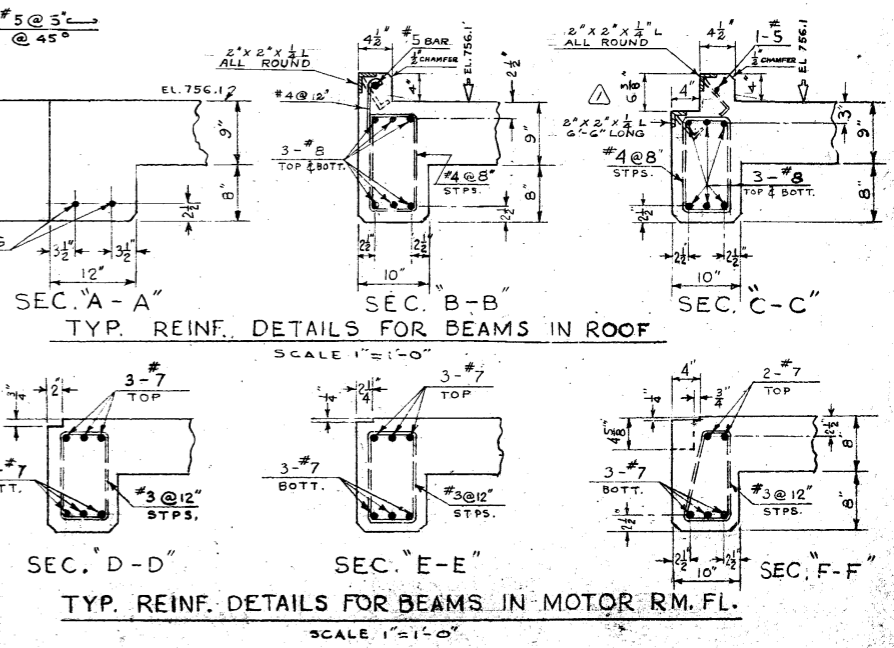
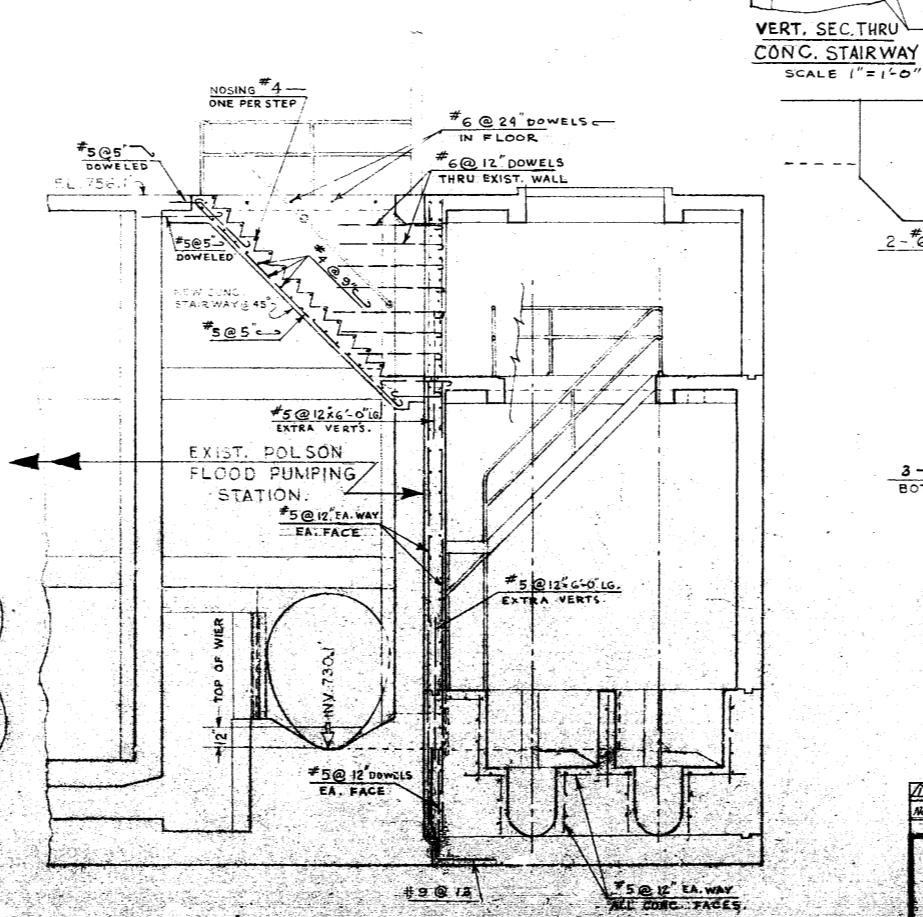
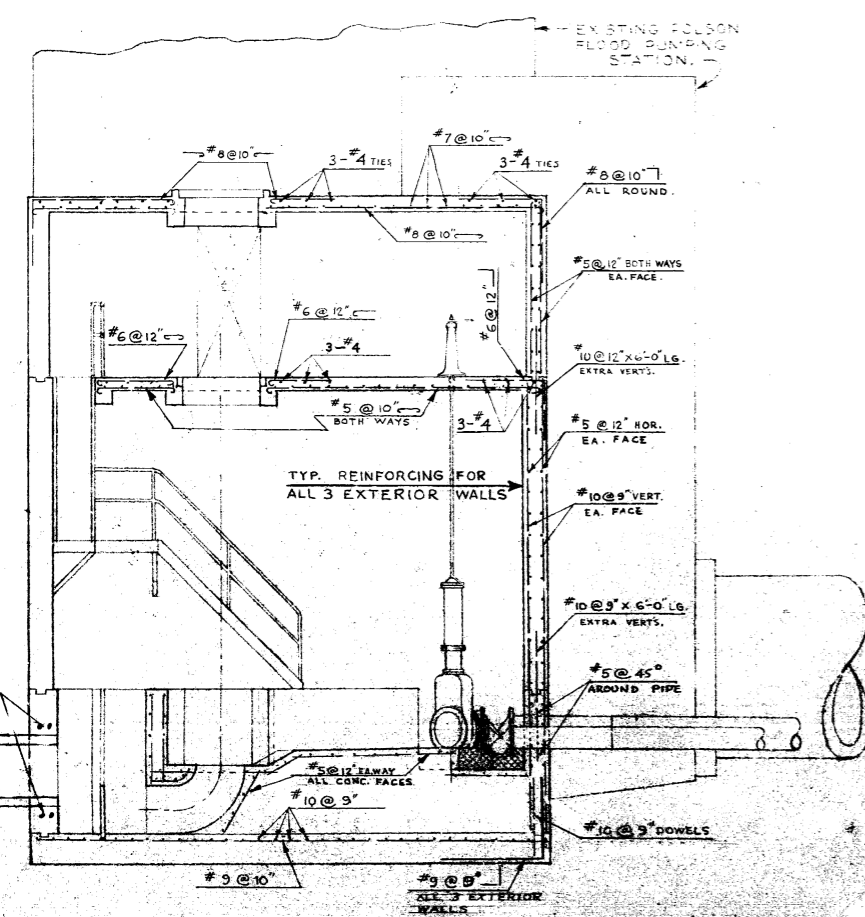
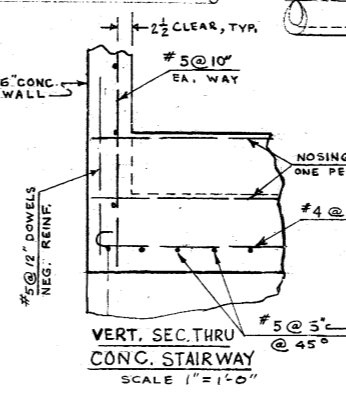
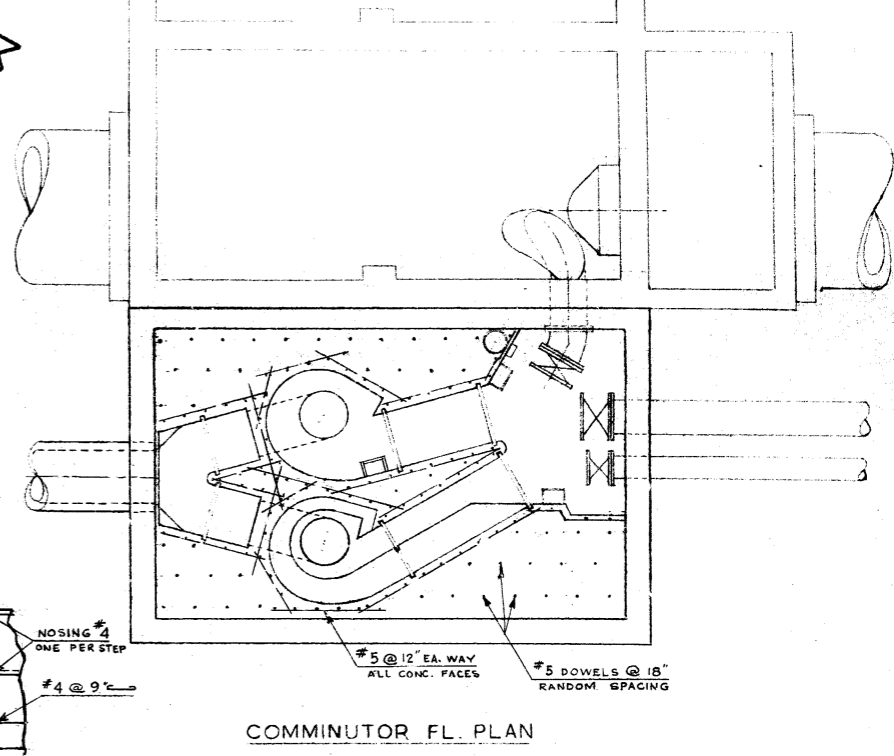
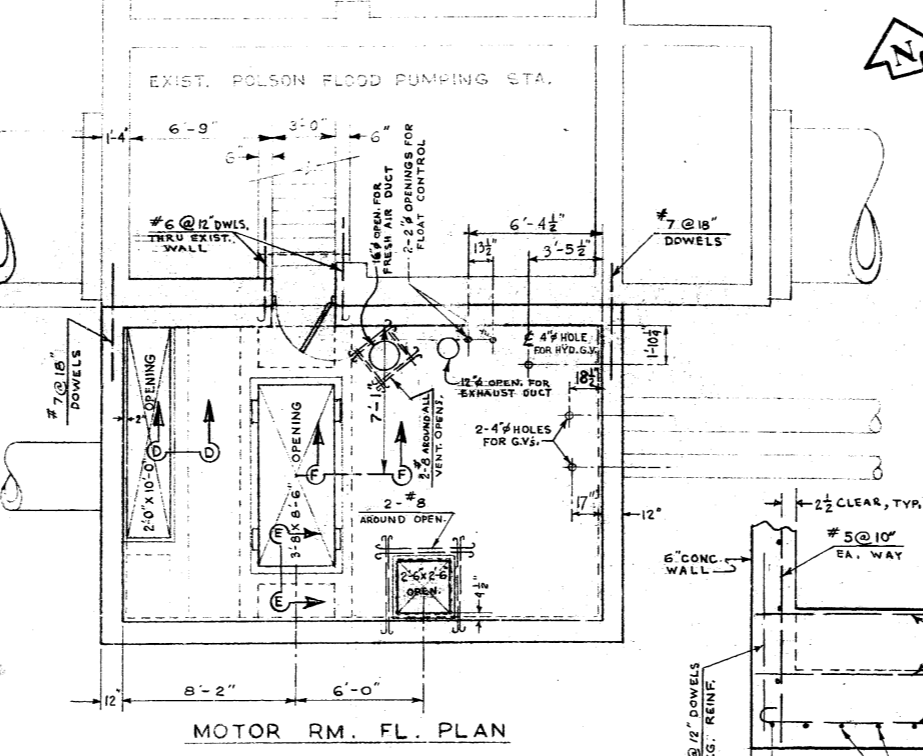
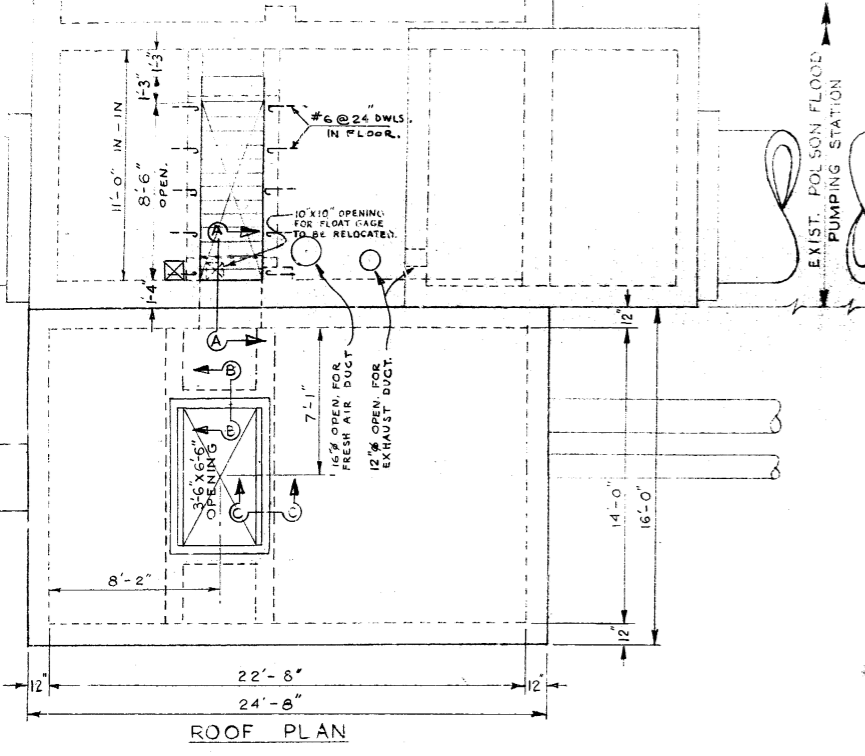
THE METROPOLITAN CORPORATION OF GREATER WINNIPEG  
**WATERWORKS & WASTE DISPOSAL DIVISION**  
N. S. BUBBIS - DIRECTOR

**POLSON COMMUNITOR STA.**  
**SITE PLAN, PROFILE & MISC. DETAILS.**

DR. R. GIRLING CH'ED. 2/27  
DR. H. BURNHAM DATE 28 DEC. 64  
ENG. DES. *[Signature]*  
ENG. WEAVER DES. *[Signature]*

SCALE AS NOTED  
DRAWING NO. **513**



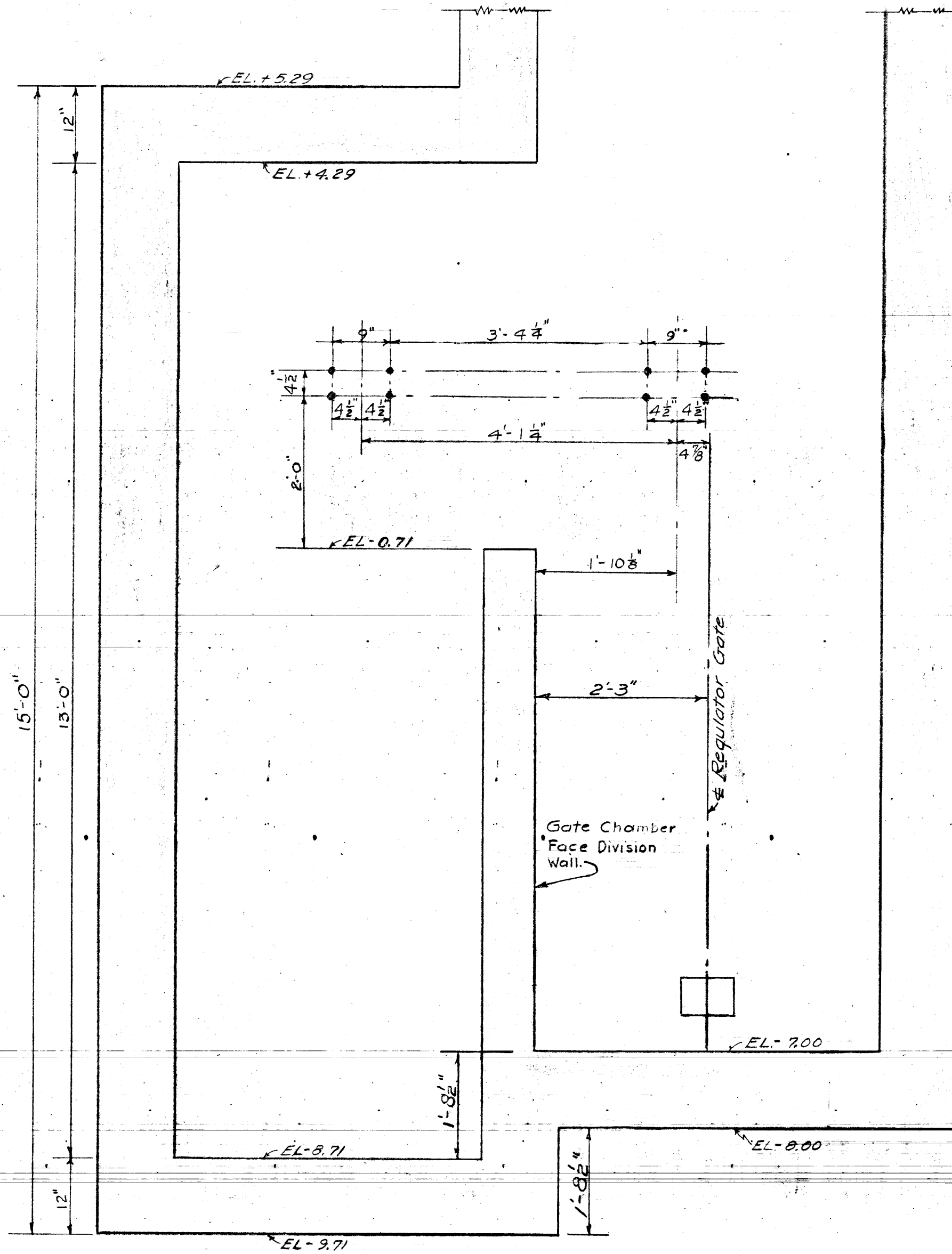


REVISIONS		DATE	
NO.	DESCRIPTION	DATE	BY

THE METROPOLITAN CORPORATION OF GREATER WINNIPEG <b>WATERWORKS &amp; WASTE DISPOSAL DIVISION</b>	SEWAGE DISPOSAL DEPT. <b>POLSON COMMUNUTOR STA</b> <b>REINFORCING STEEL DETAILS</b>	DES. M. GLEZAK DRW. H. BUSMAN ENG. DES. <i>[Signature]</i> ENCL. WASTE DEPT. <i>[Signature]</i>	SHEET NO. 512
---	---	--	---------------

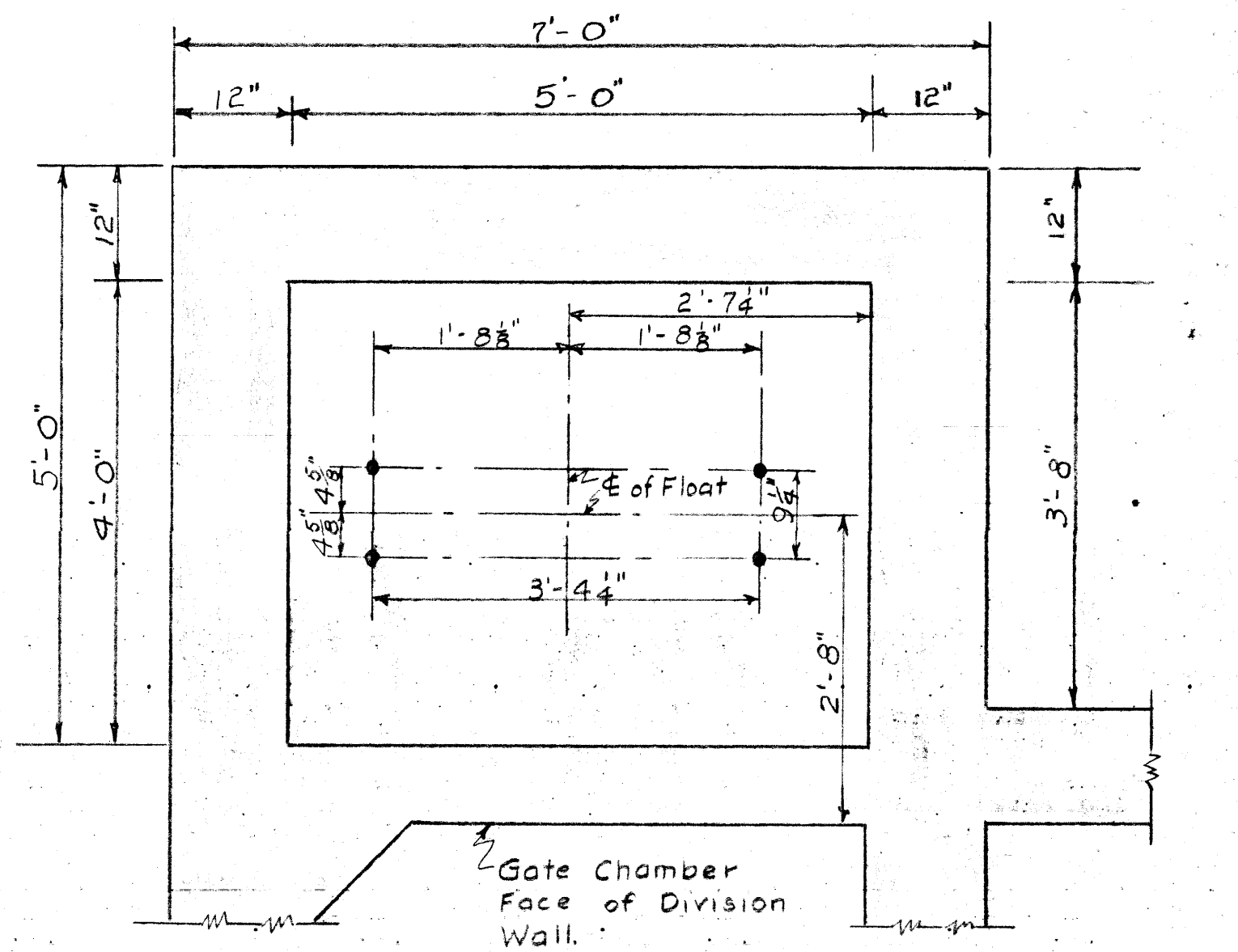
1 DEAN 2 3 4 5 6 7 8 9 10 11 12 13 14 15 16 17 18 19 20



BOLT SETTING DETAIL

East Wall of float and Gate Chamber.  
West Wall similar but opposite hand.

Note: Set all anchor bolts for 5" Wall grip.  
All anchor bolts to be 3/4" Diameter.



BOLT SETTING PLAN FLOAT CHAMBER FLOOR.

APPROVED

*W. S. Lea*  
Consulting Engineer

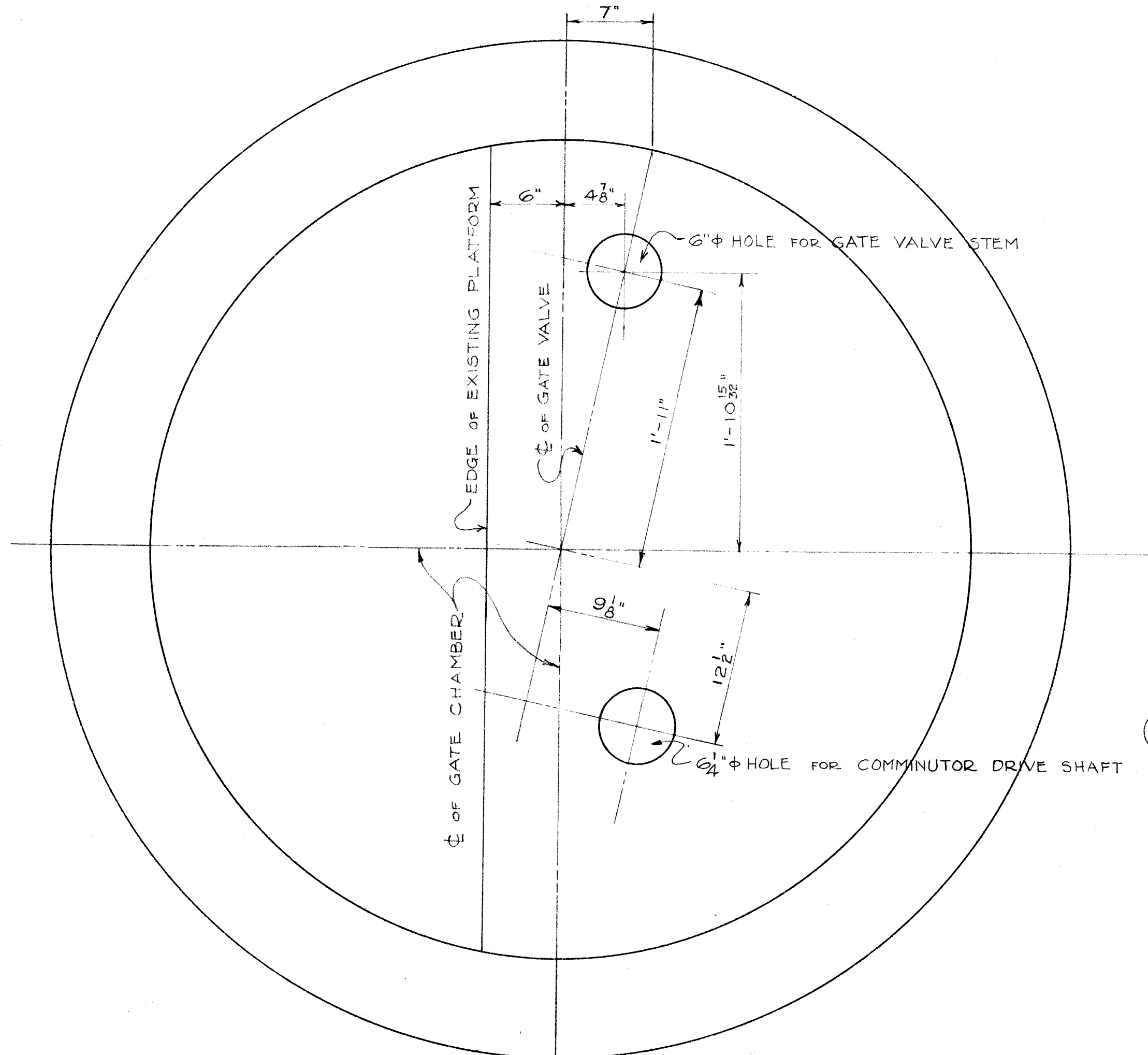
GREATER WINNIPEG SANITARY DISTRICT

W. S. LEA Consulting Engineer		TITLE POLSON AVE.
ENGINEERING BOARD	APPROVED DATE	REGULATOR CHAMBER
W. P. BRADSHAW, Chief Engineer	<i>[Signature]</i>	BOLT SETTING PLAN
R. W. MCKINNON,	<i>[Signature]</i>	SCALE 3/4" = 1'-0" DATE July 23-36
J. W. BATTERSHILL,	<i>[Signature]</i>	DRAWN BY L. R. M.
C. S. LAYDON,	<i>[Signature]</i>	TRACED BY <i>[Signature]</i> PLAN No. M-43
		CHECKED BY <i>[Signature]</i> CONTRACT No. 32
		APPROVED BY <i>[Signature]</i> Office Engineer
W. D. HENRY, Secretary	<i>[Signature]</i>	Asst. Chief Engineer

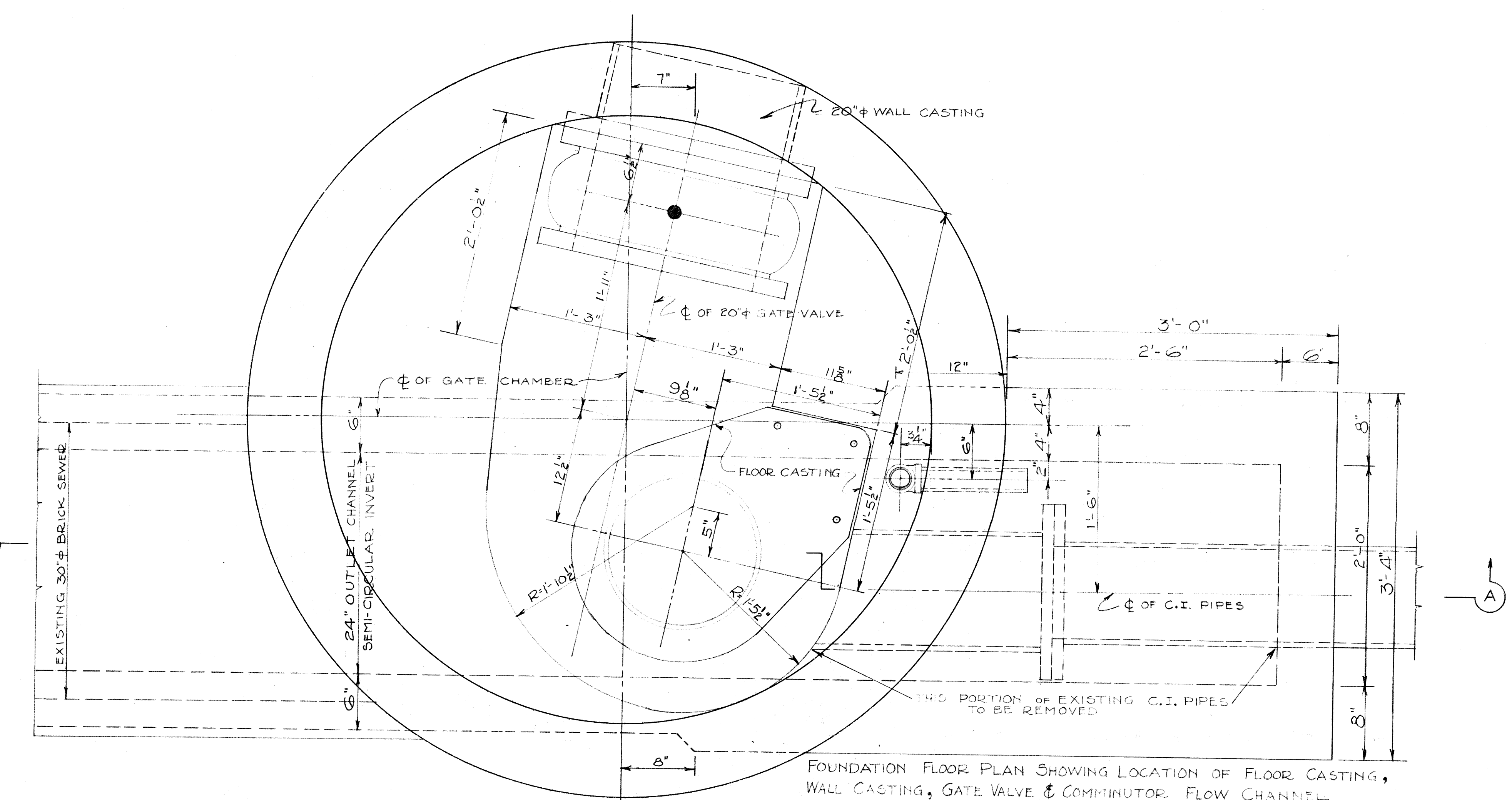
NOTES:

Micro-Filmed 1965

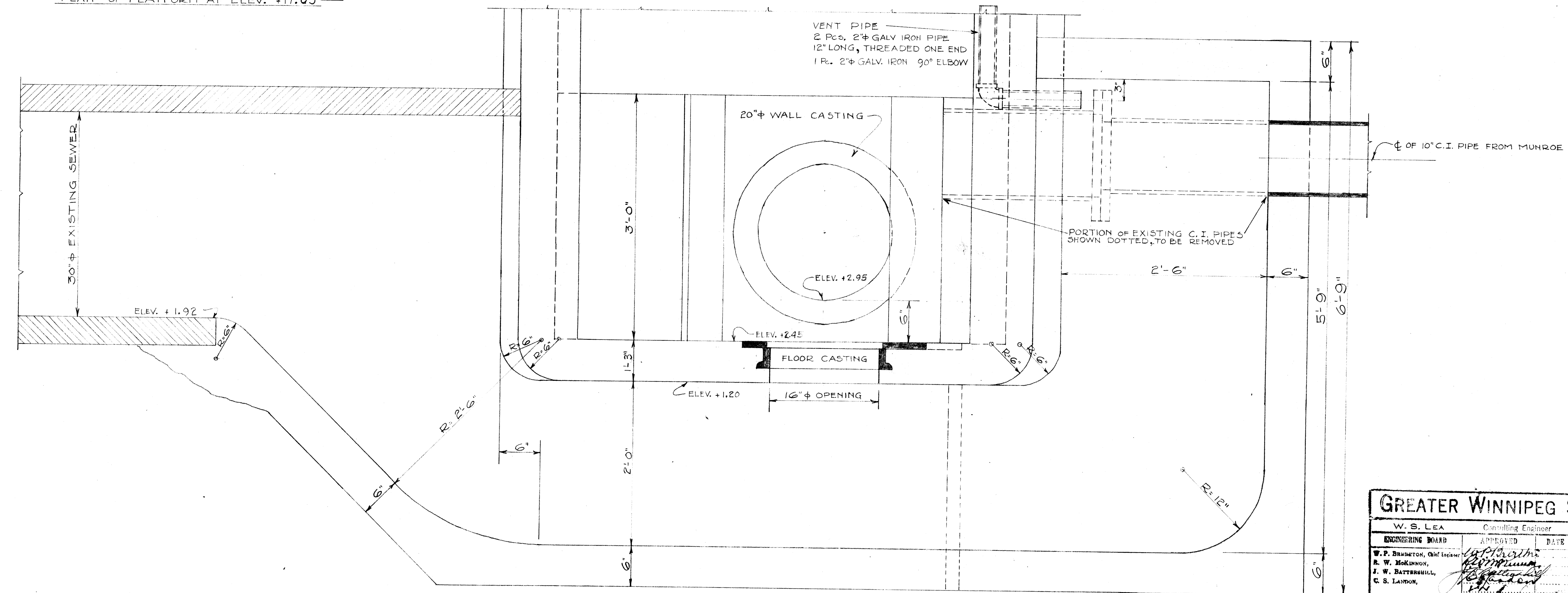
M-043



— PLAN OF PLATFORM AT ELEV. +17.03 —



FOUNDATION FLOOR PLAN SHOWING LOCATION OF FLOOR CASTING, WALL CASTING, GATE VALVE & COMMUNUTOR FLOW CHANNEL



— SECTION A-A —

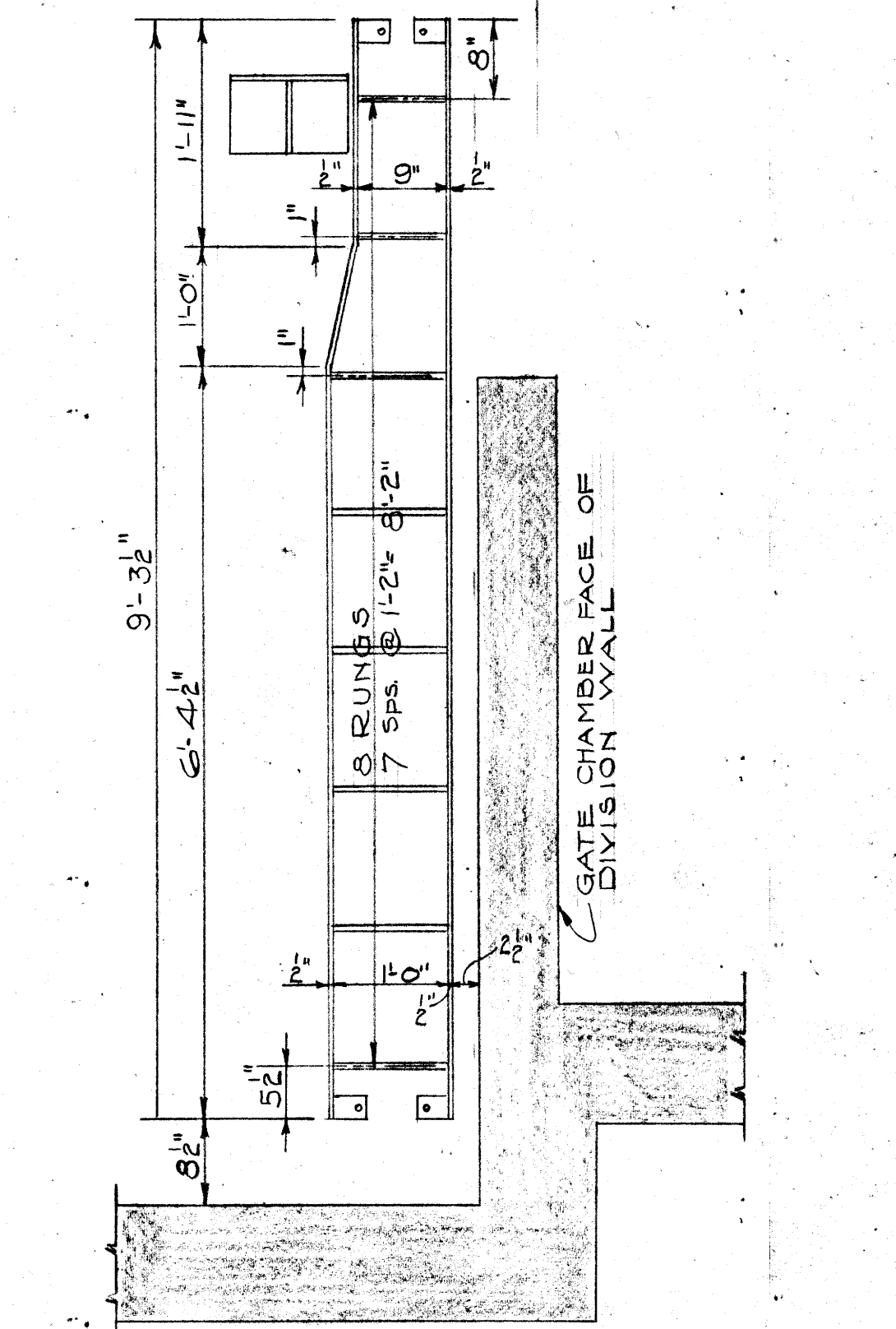
Micro-Filmed 1965

APPROVED  
*[Signature]*  
 Consulting Engineer

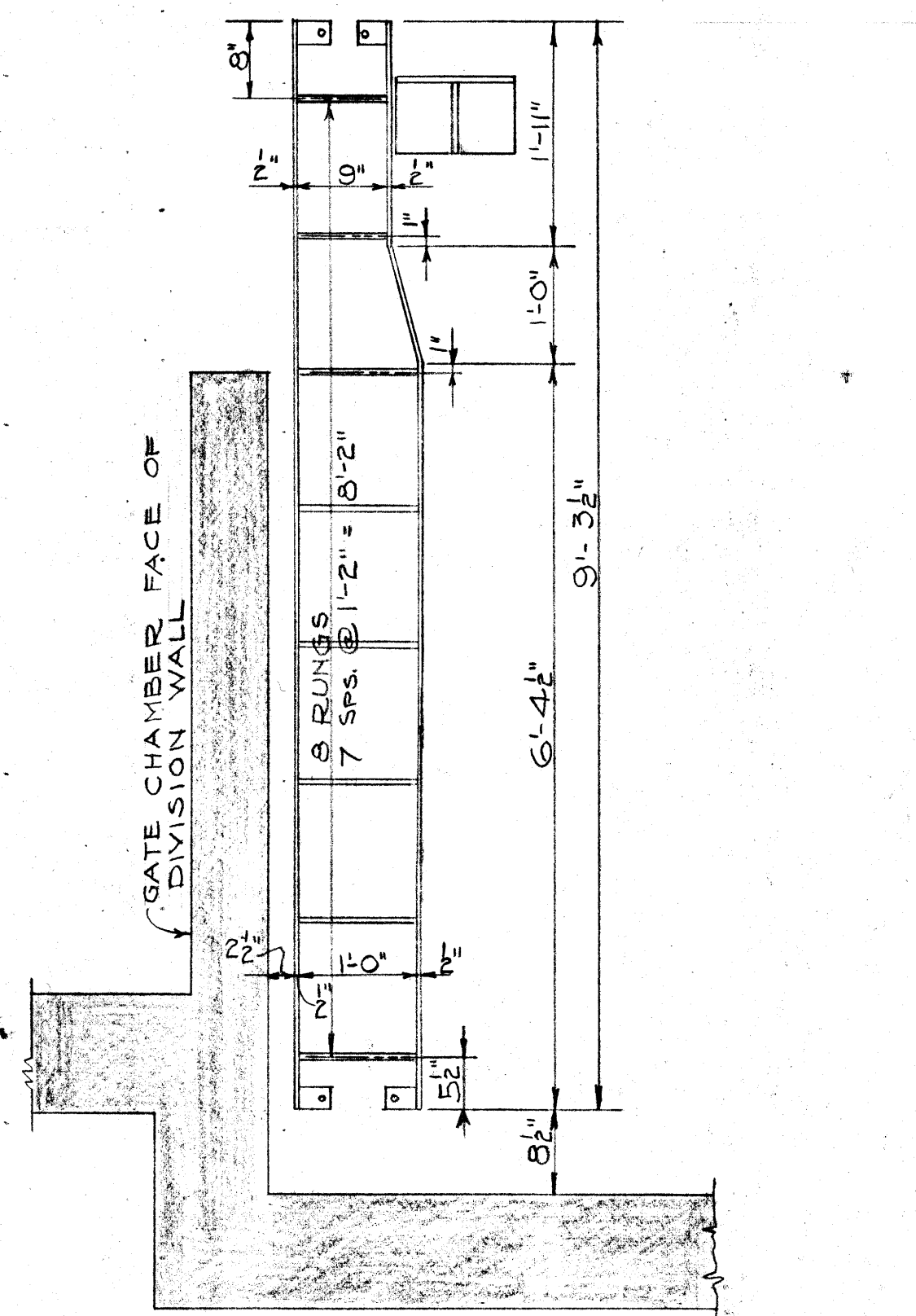
<b>GREATER WINNIPEG SANITARY DISTRICT</b> W. S. LEA, Consulting Engineer APPROVED DATE		TITLE: ROBIN AVE. COMMUNUTOR & GATE CHAMBER
W. F. BRIDGEMAN, Chief Engineer A. W. MCKINNON, J. W. BATTENBULL, C. S. LAYTON,	Scale 1/2" = 1'-0" Drawn by: <i>[Signature]</i> Traced by: <i>[Signature]</i> Checked by: <i>[Signature]</i> Approved by: <i>[Signature]</i>	PLAN No. M-54 CONTRACT No. 31
W. D. HEWITT, Secretary REVISIONS: REV. AUG 24/36 ELEV. OF INVERT OF SECONDARY INTERCEPTOR ADDED REV. DEC. 31/36 Elev's, see A-A, revised. Platform II revised.		Office Engineer Date

M-054

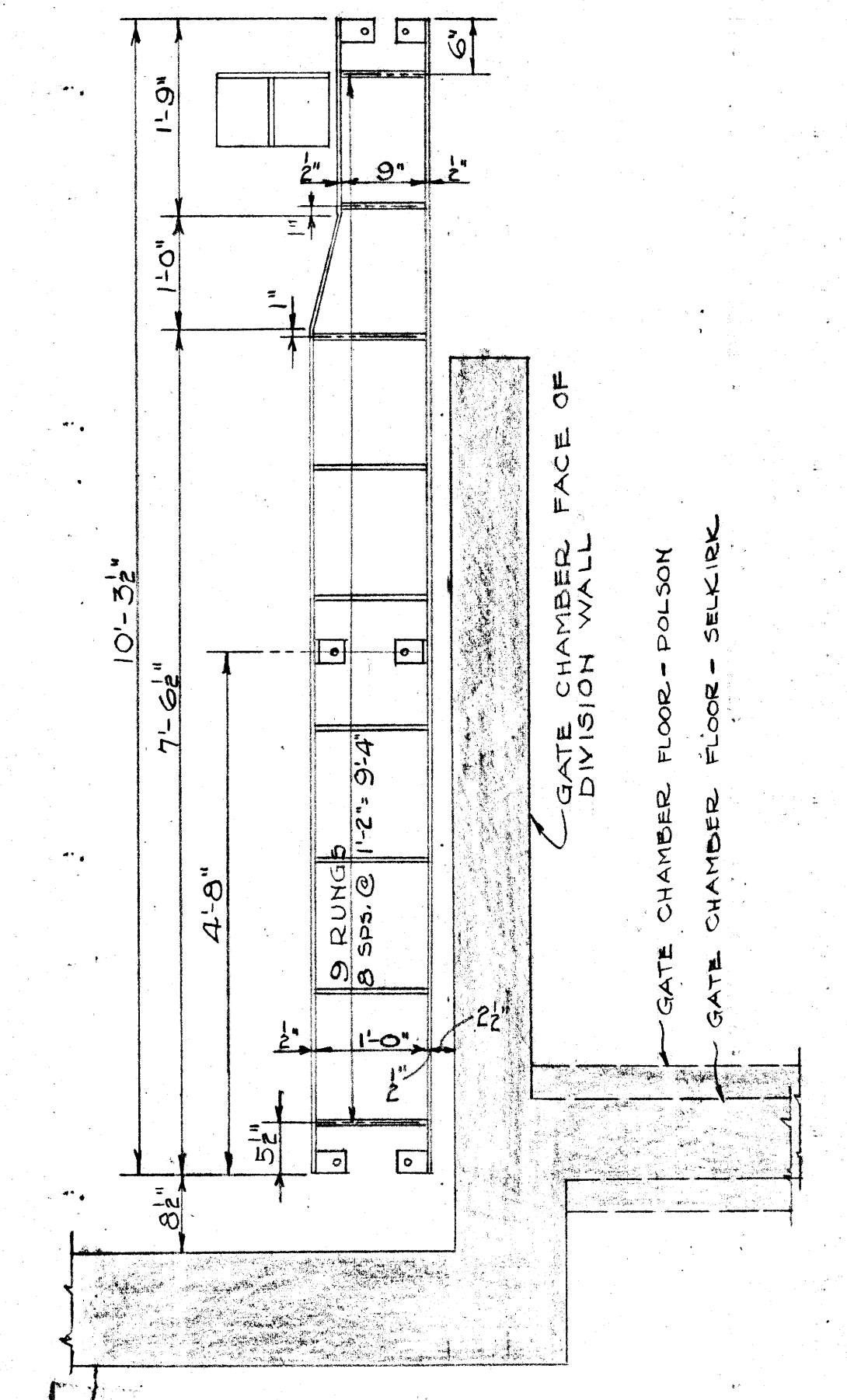




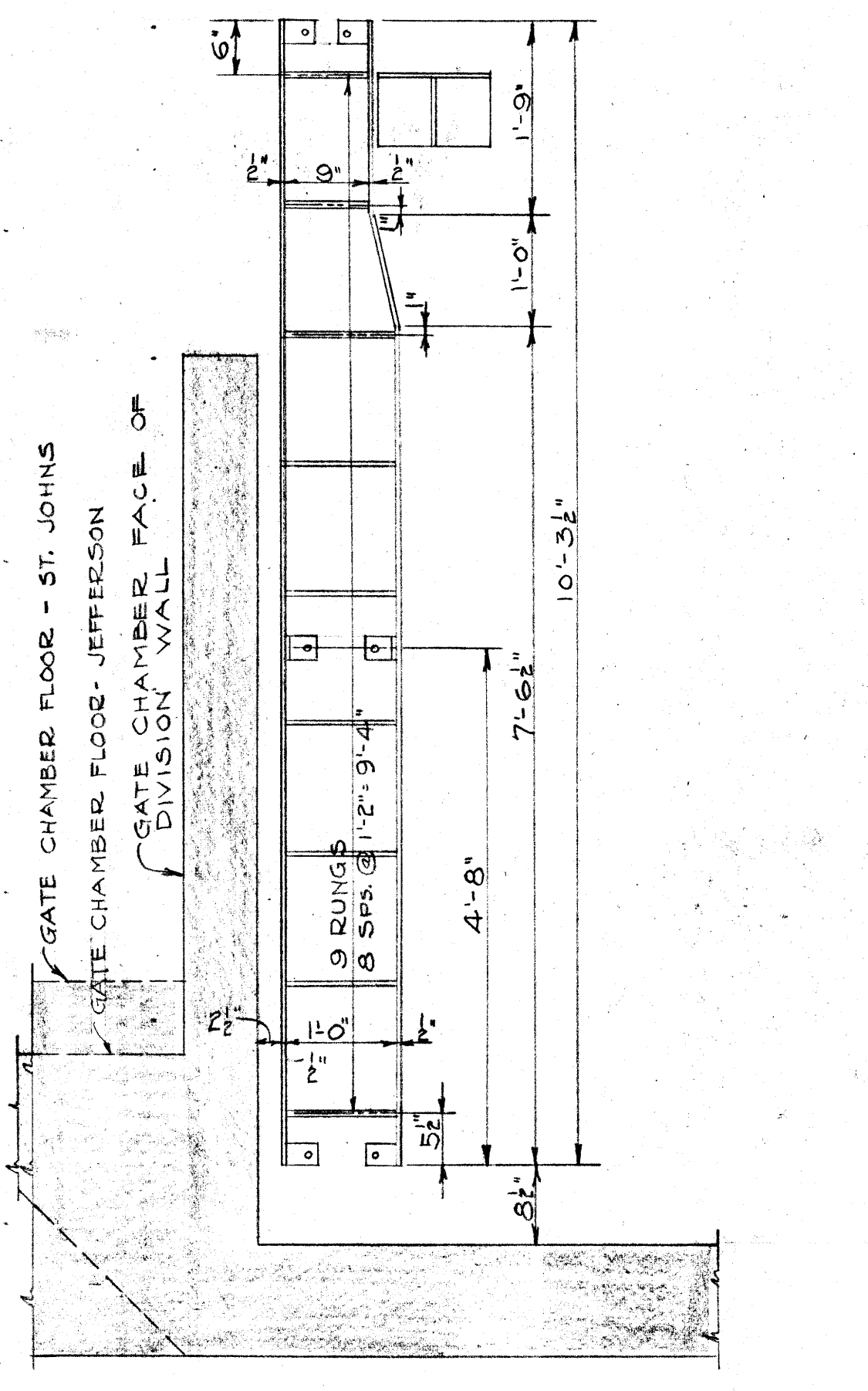
ALEXANDER FLOAT CHAMBER LADDER DETAIL  
1 LADDER REQ'D



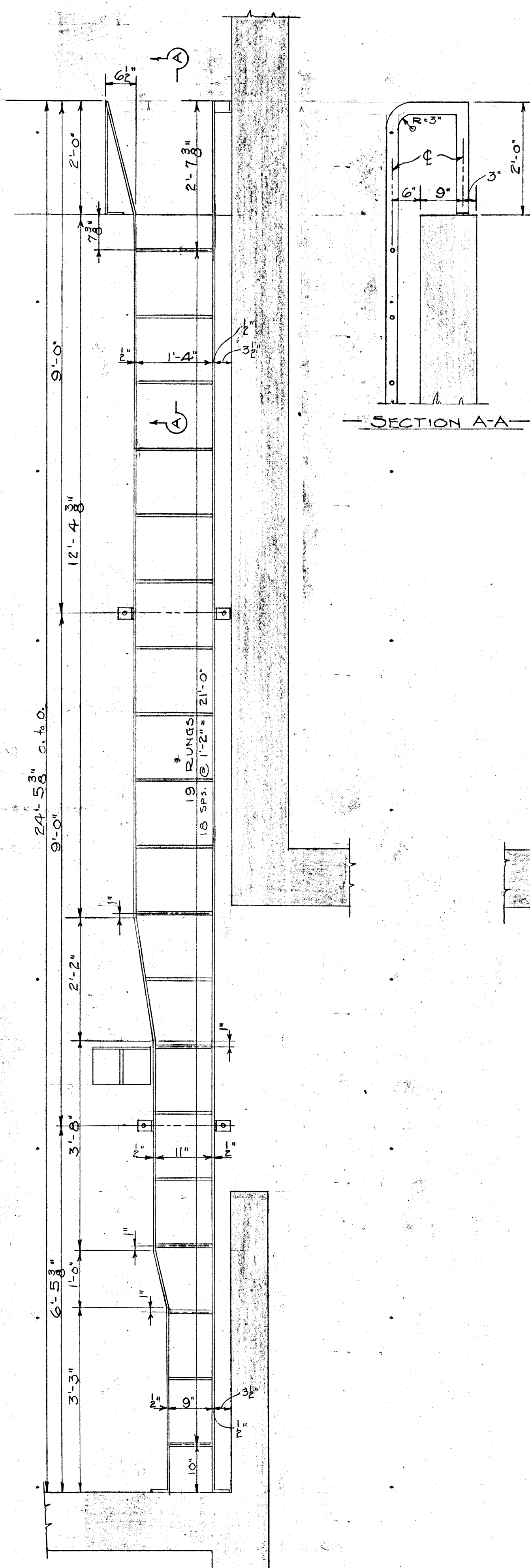
BANNATYNE FLOAT CHAMBER LADDER DETAIL  
1 LADDER REQ'D



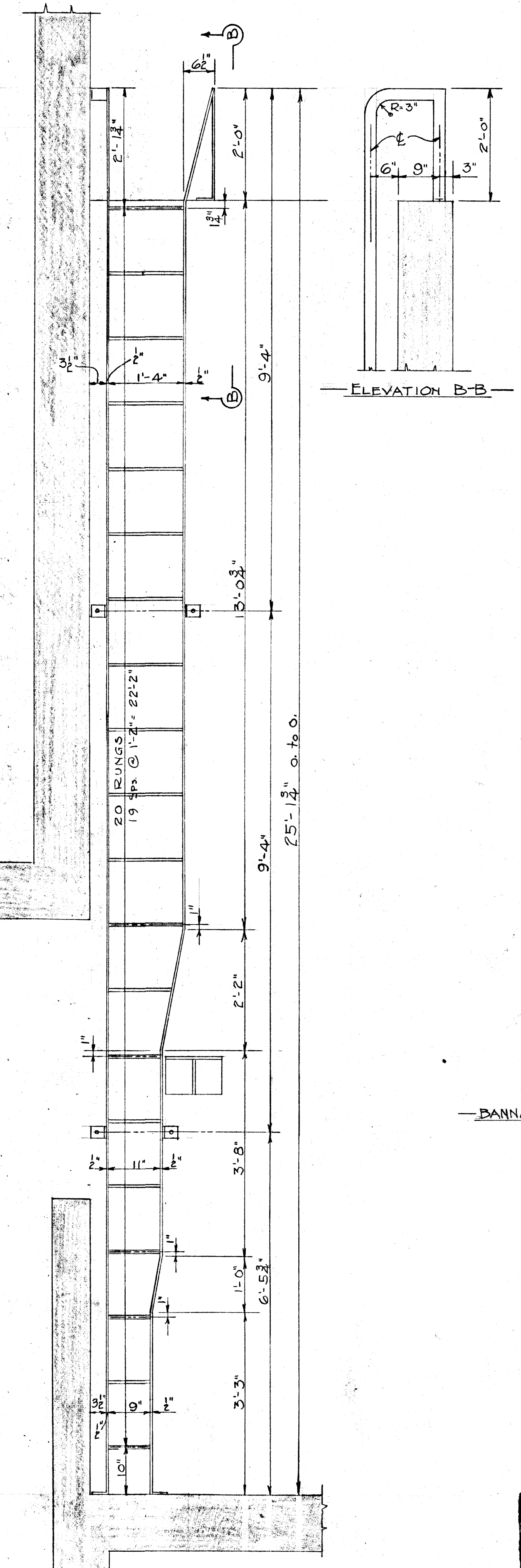
POLSON & SELKIRK CHAMBERS  
FLOAT CHAMBER LADDER DETAIL  
1 LADDER REQ'D AT POLSON  
1 LADDER REQ'D AT SELKIRK



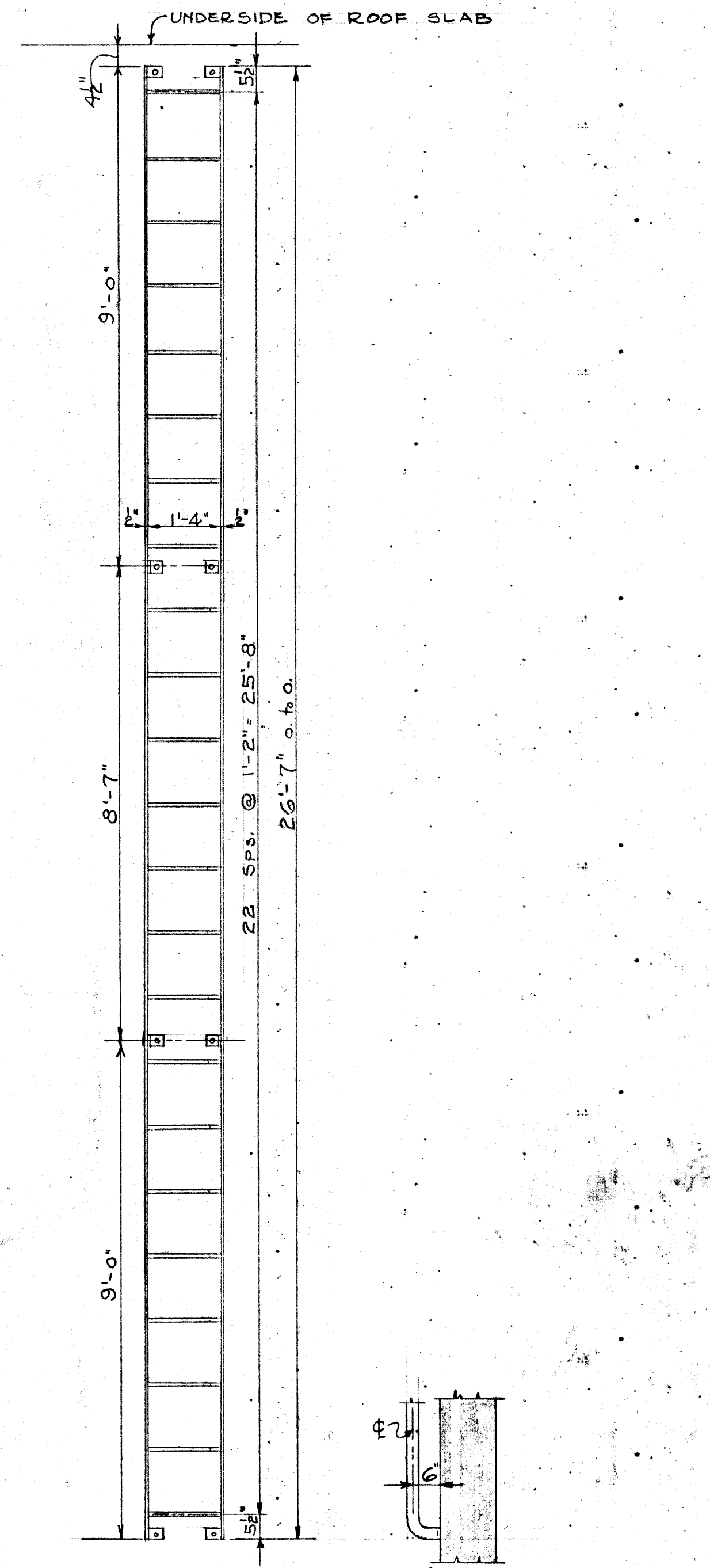
ST. JOHNS & JEFFERSON CHAMBERS  
FLOAT CHAMBER LADDER DETAIL  
1 LADDER REQ'D AT ST. JOHNS  
1 LADDER REQ'D AT JEFFERSON



BANNATYNE GATE CHAMBER LADDER DETAIL  
1 LADDER REQ'D



ALEXANDER GATE CHAMBER LADDER DETAIL  
1 LADDER REQ'D



BANNATYNE & ALEXANDER SURGE CHAMBER LADDER DETAIL  
1 LADDER REQ'D AT BANNATYNE  
1 LADDER REQ'D AT ALEXANDER  
SCALE: 1/2" = 1' 0"

NOTE:  
LADDER SIDES - 2 1/2" x 1/2" FLATS SPACED AS SHOWN  
RUNGS - 3" φ @ 14" o.c.

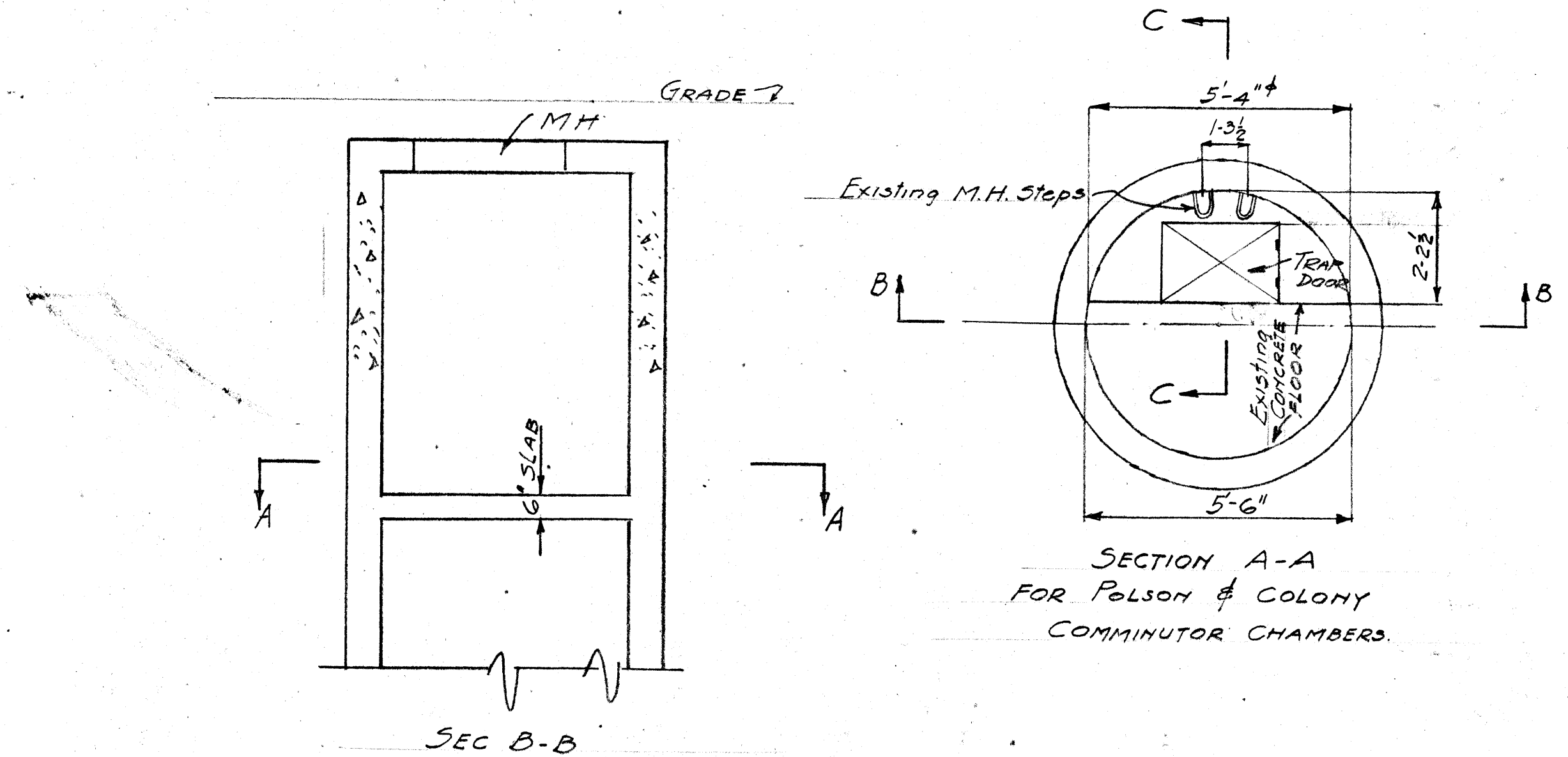
Micro-Filmed 1965

APPROVED  
W. S. LEA  
Consulting Engineer

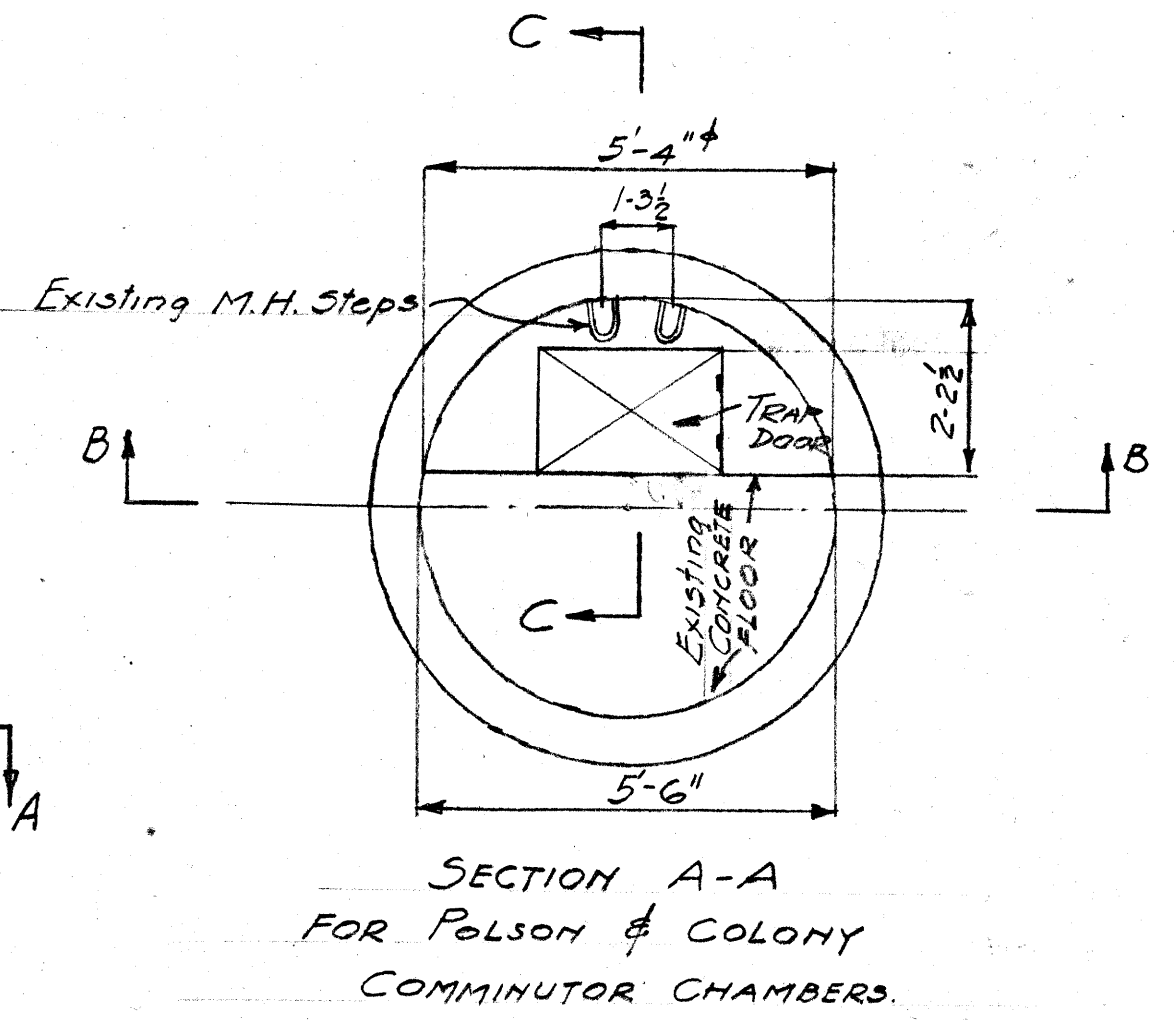
W. S. LEA Consulting Engineer			TITLE: REGULATOR CHAMBERS	
ENGINEERING BOARD	APPROVED	DATE	SCALE: 1/2" = 1' 0" EXCEPT AS NOTED DATE: SEPT. 21, 1932	CONTRACT NO. 1132
W. P. BRIDGTON, CHM. Insp.			DRAWN BY: J. S. L.	PLAN NO. M-58
W. W. MURPHY, CHM. Insp.			CHECKED BY: J. S. L.	
J. W. BAYNEBRIEL, CHM. Insp.			APPROVED BY: J. S. L.	
G. S. LANDON, CHM. Insp.				
D. HURST, Secretary				Office Engineer Asst. Chief Engineer

M-058

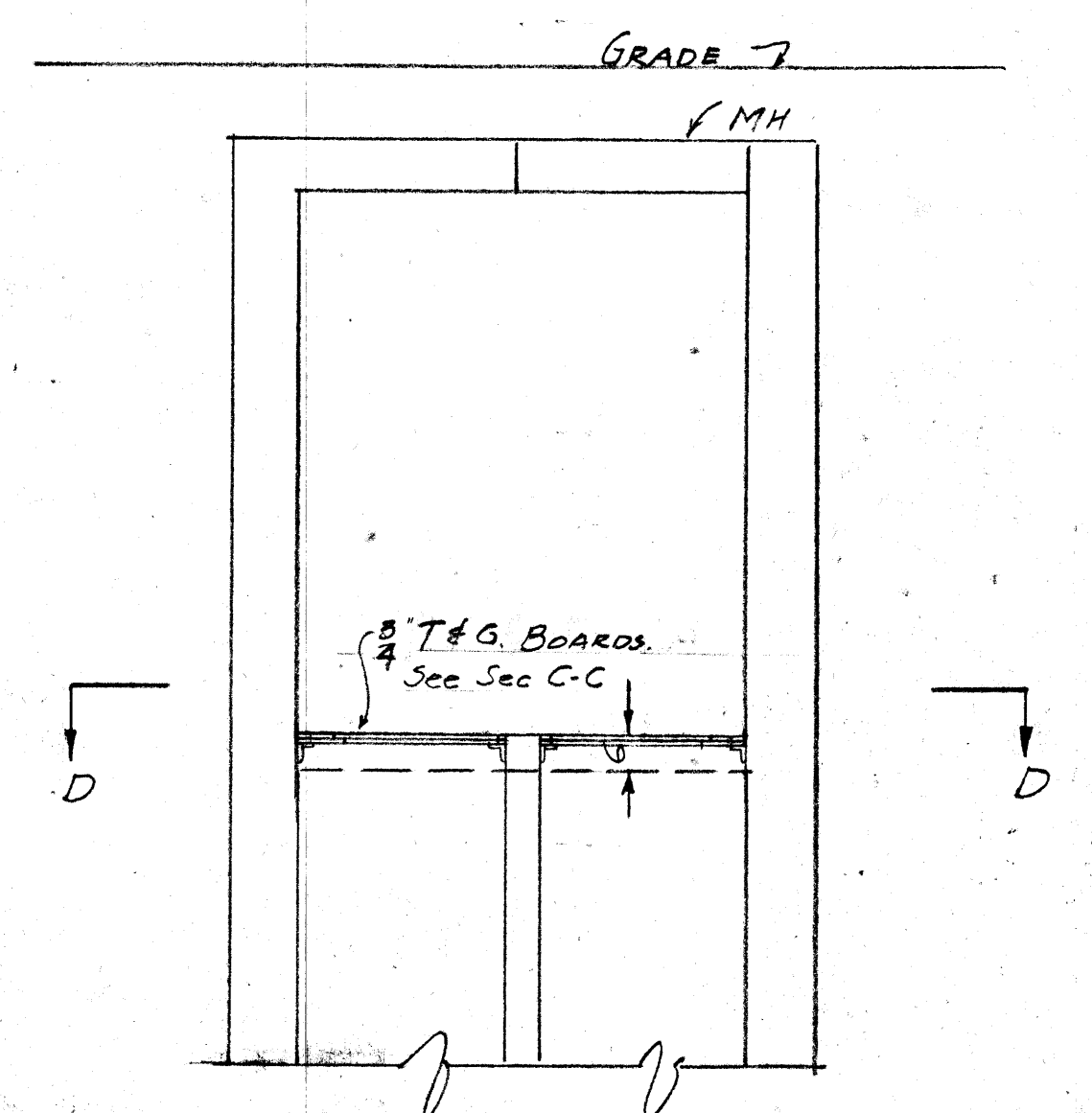




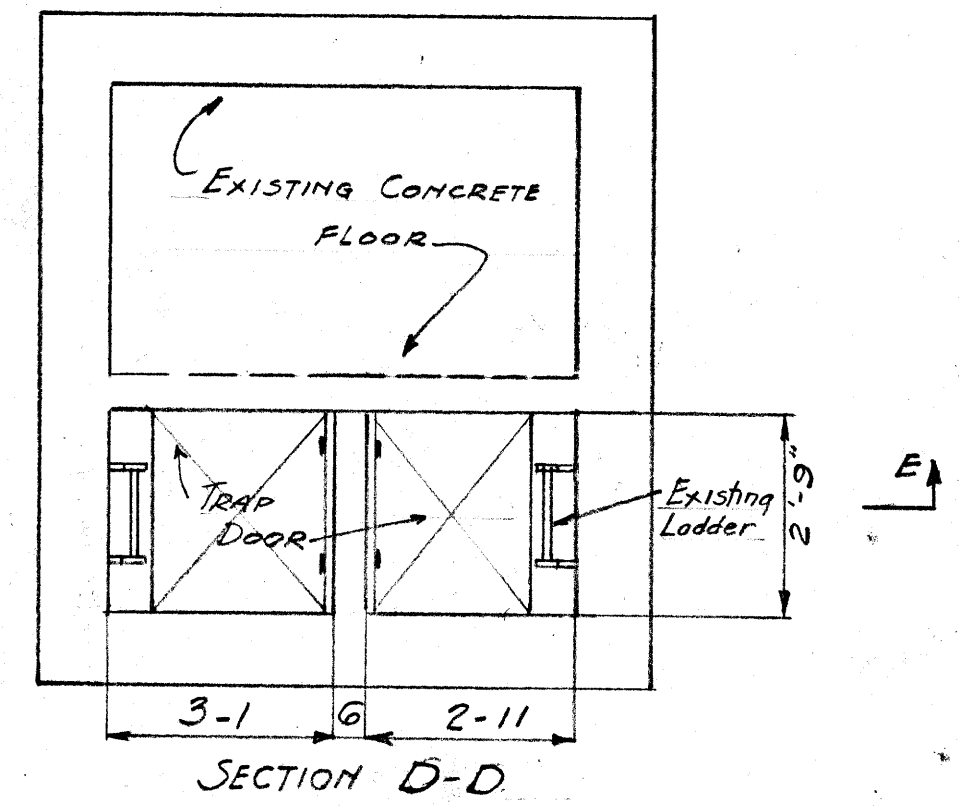
FOR COLONY ALEXANDER SELKIRK  
POLSON BANHATYNE & JEFFERSON  
COMMUNOTOR CHAMBERS



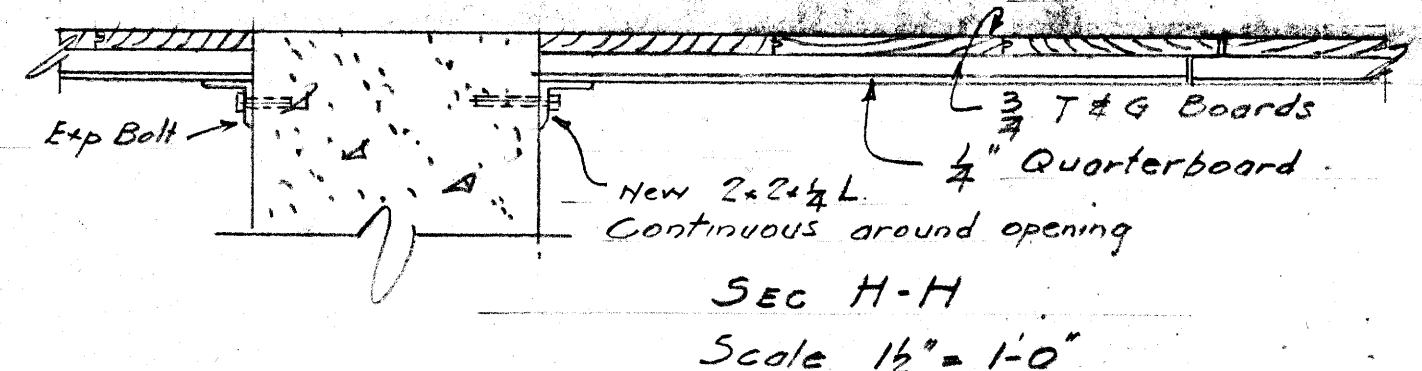
SECTION A-A  
FOR POLSON & COLONY  
COMMUNOTOR CHAMBERS.



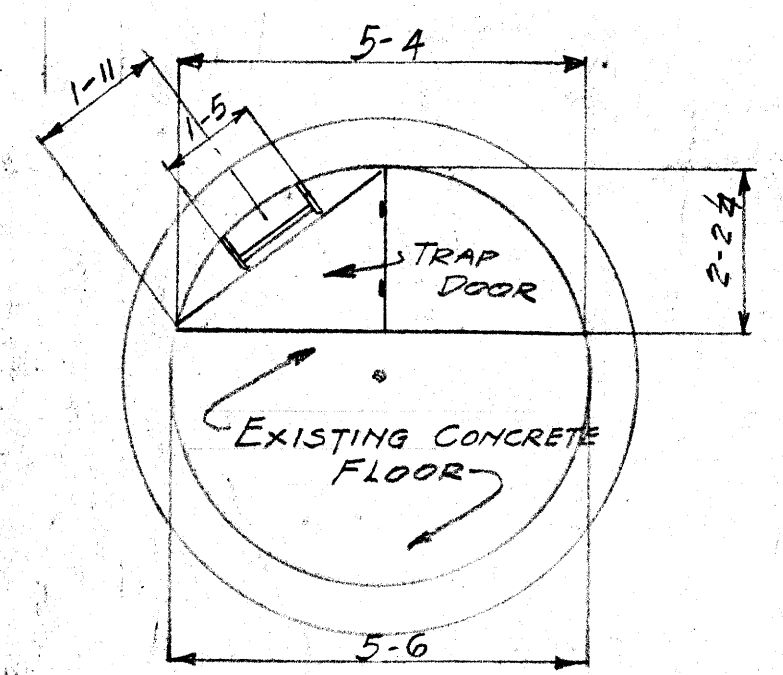
SECTION E-E  
FOR ASSINIBOINE COMMUNOTOR CHAMBER.



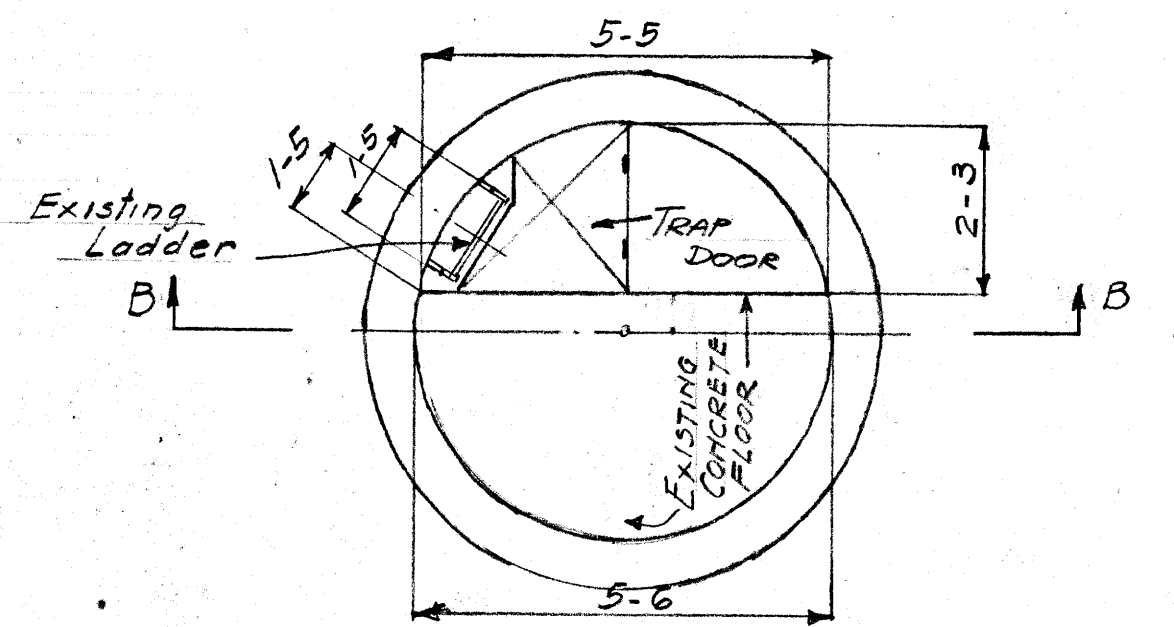
SECTION D-D  
FOR ASSINIBOINE COMMUNOTOR  
CHAMBER.



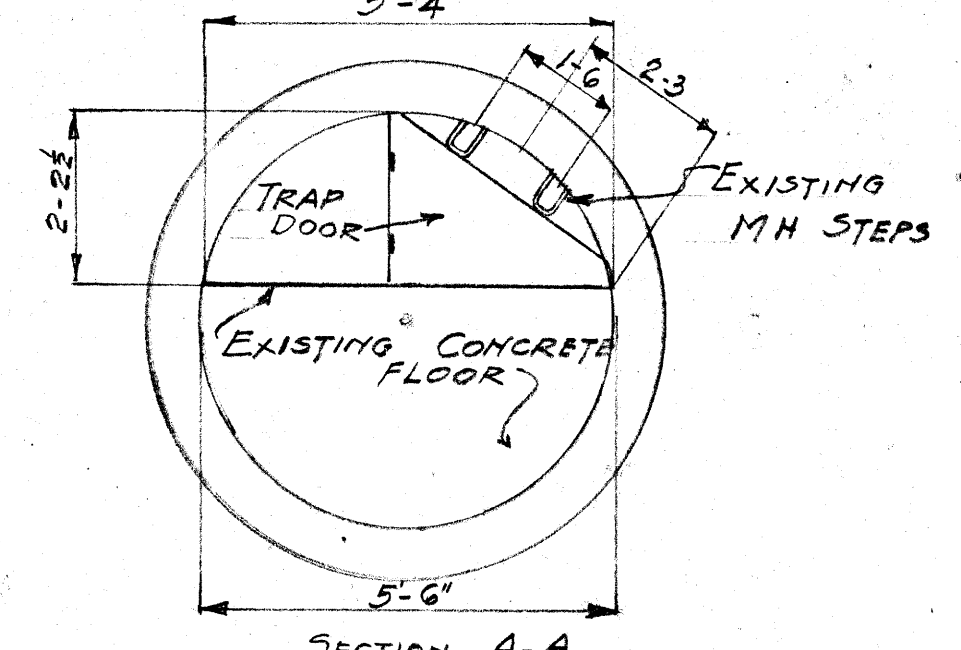
SECTION H-H  
Scale 1/2" = 1'-0"



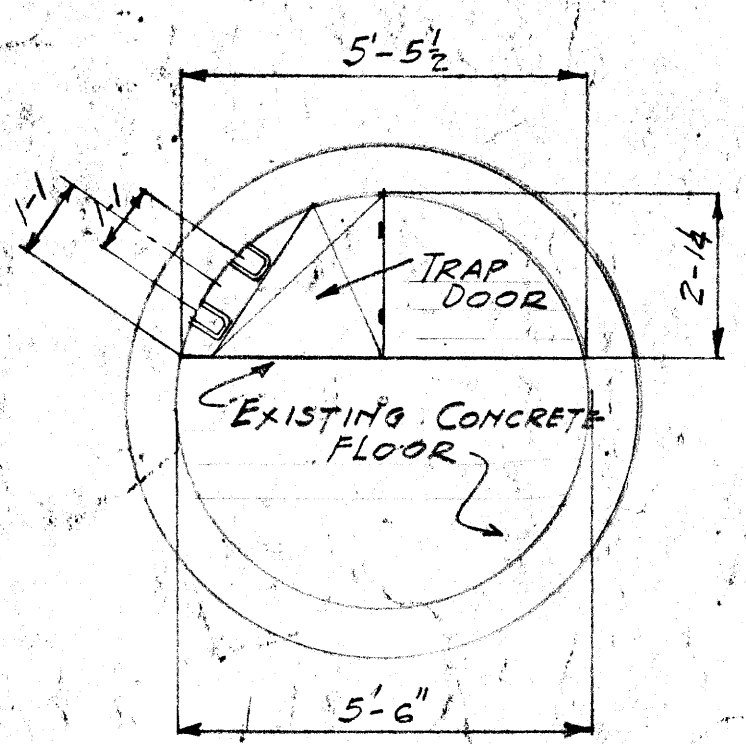
SECTION A-A  
FOR ALEXANDER COMMUNOTOR CHAMBER



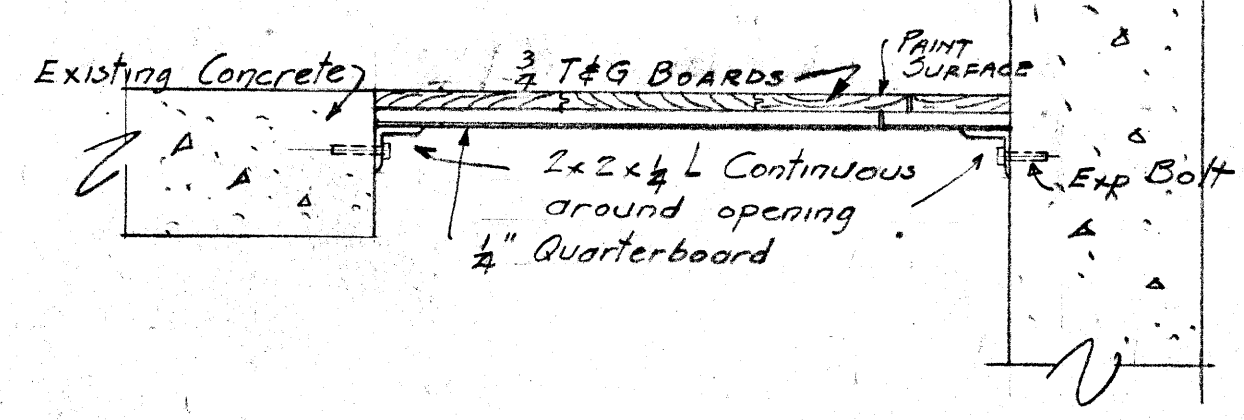
SECTION A-A  
FOR JEFFERSON COMMUNOTOR  
CHAMBER



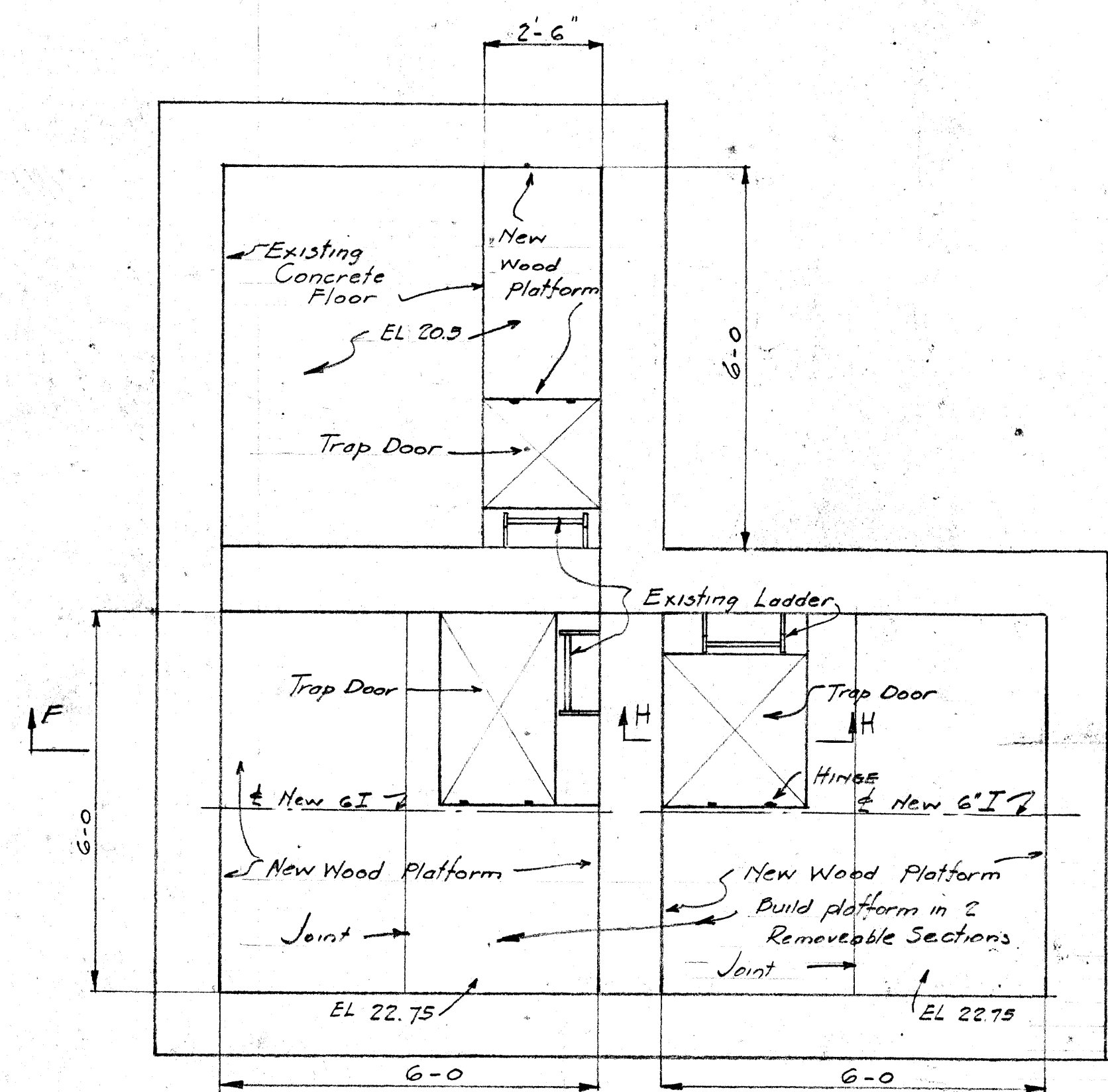
SECTION A-A  
FOR SELKIRK COMMUNOTOR CHAMBER



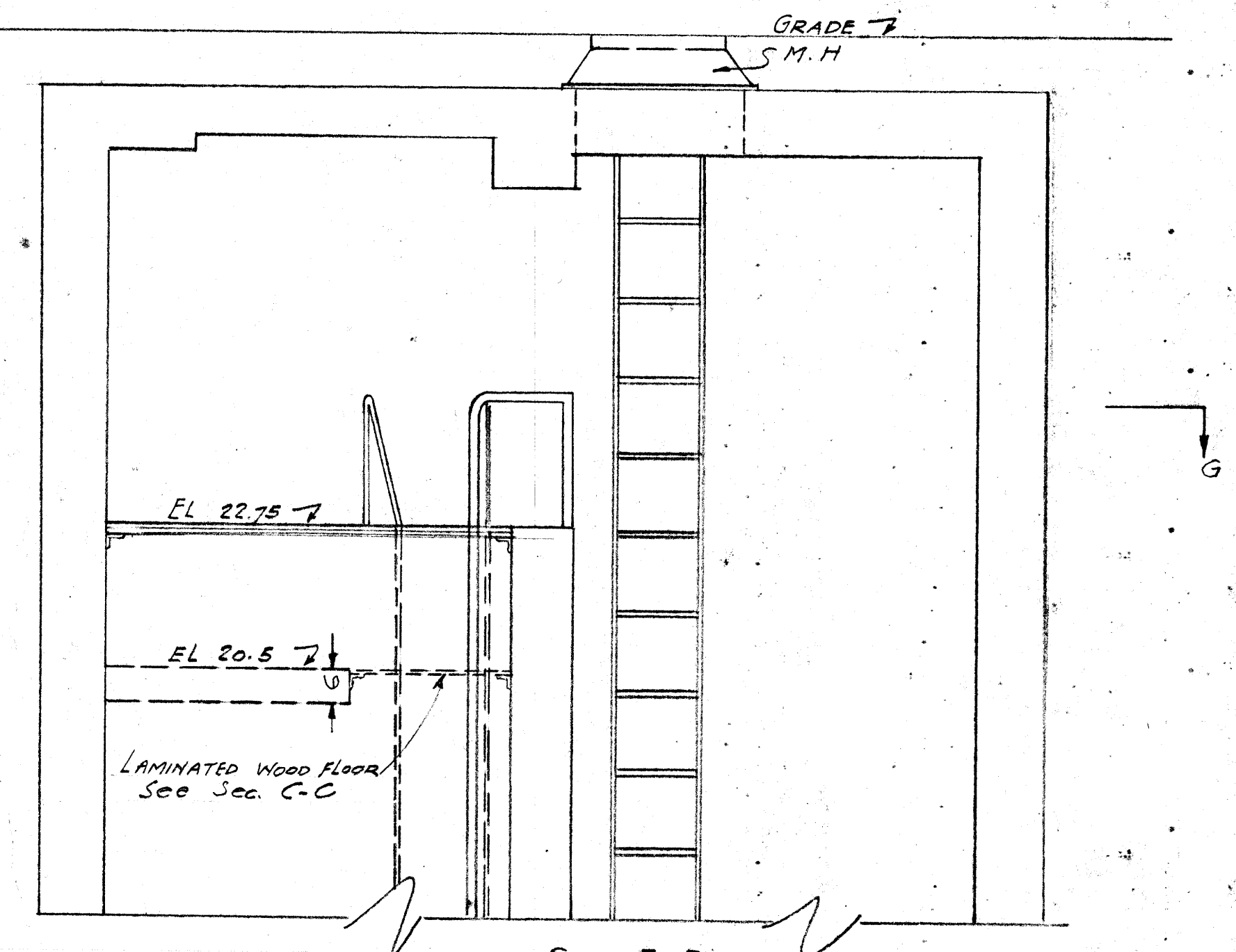
SECTION A-A  
FOR BANHATYNE COMMUNOTOR CHAMBER



SECTION C-C  
SCALE 1/2" = 1'-0"  
TYPICAL DETAIL FOR COMMUNOTOR  
CHAMBERS.



SECTION G-G  
FOR ST. JOHNS COMMUNOTOR  
& REGULATING CHAMBER  
Scale 1/2" = 1'-0"



SECTION F-F  
FOR ST. JOHNS COMMUNOTOR  
& REGULATING CHAMBER  
SCALE 1/2" = 1'-0"

NOTES - ALL MATERIAL TO BE LOWERED INTO PLACE THROUGH MANHOLES. ALL M.H. SAME SIZE AS CITY HYDRO STANDARD EXCEPT ST. JOHNS CHAMBER WHICH HAS 6" WSD STD 24" M.H. WOOD PLATFORMS TO BE BUILT TO COMPLETELY SEAL OPENINGS. DOARDS TO BE TIGHTLY FITTED AROUND LADDERS ALL PLATFORMS TO BE REMOVEABLE.

APPROVED FOR CONSTRUCTION  
DATE.....  
Approval of this drawing covers only the design and arrangement of structural and equipment and does not in any way release the Contractor of any liability or responsibility.

ENGINEERING BOARD			TITLE PLATFORM FOR MOTOR OPERATING FLOORS COMMUNOTOR CHAMBERS	
W. S. L. E. A.	DATE	APPROVED	DATE	SCALE 1/2" = 1'-0"
W. P. DAVENPORT, CHAIRMAN				Drawn By: JEM
NELSON BARRETT				Checked By: JEM
J. W. BACCHETTI				Approved By: V. D. HURST
G. B. LINDEN				PLN No. M-87
V. D. HURST, Secretary				Contract No.

Micro-Film'd 1965

M-087