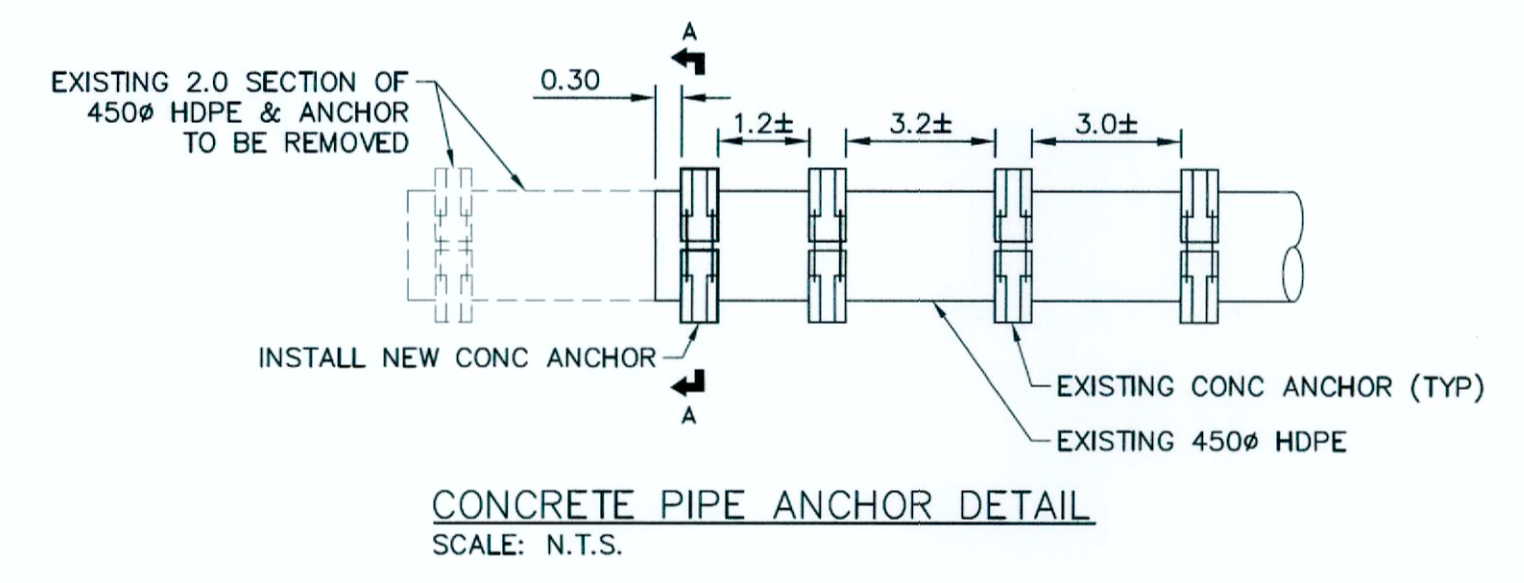
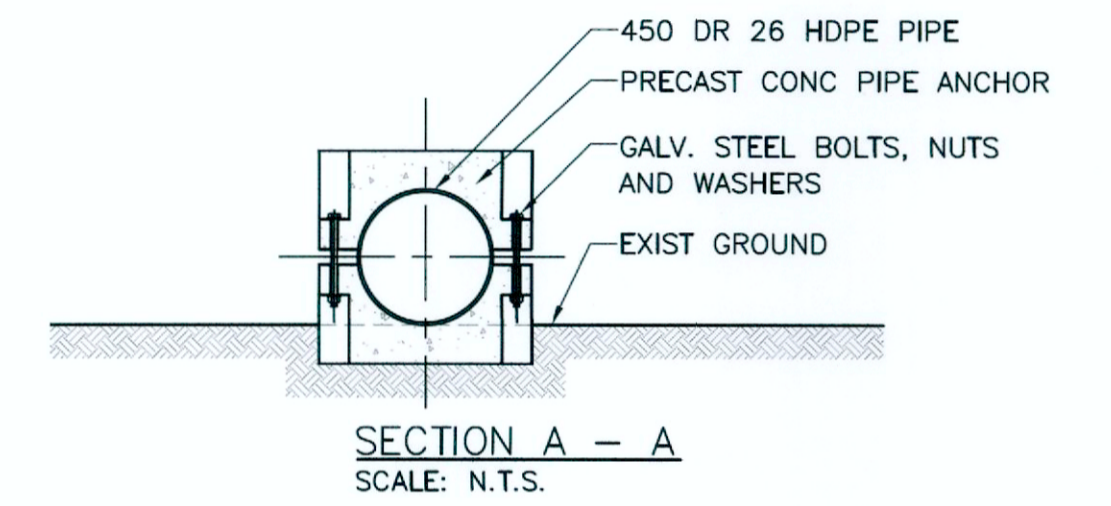


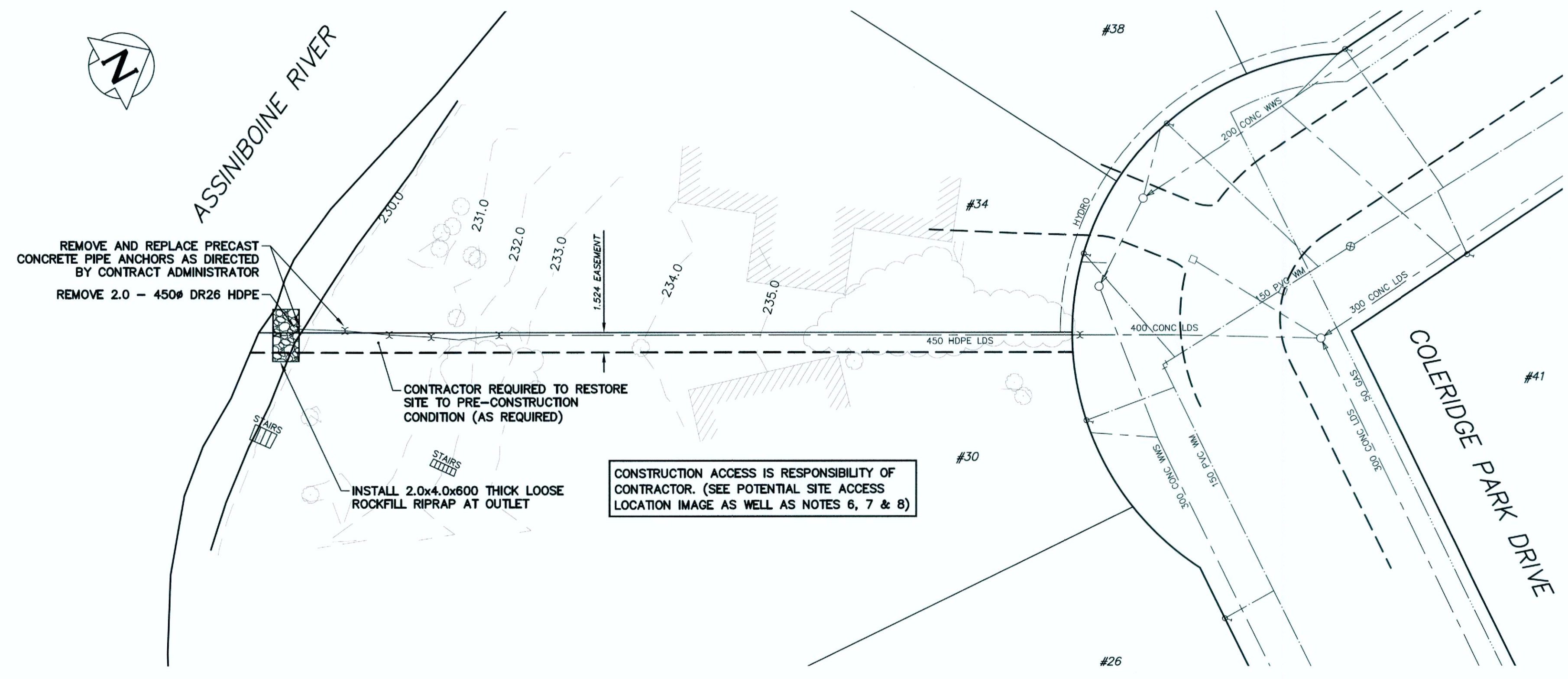
COLERIDGE PARK
POTENTIAL SITE ACCESS LOCATION



- NOTES:**
- ALL EXCAVATED MATERIAL WITHIN 106.7 (350ft) OF THE REGULATED SUMMER RIVER LEVEL (RSRL) MUST BE REMOVED FROM SITE (NO STOCKPILING).
 - CONSTRUCT CLAY COFFERDAM AT CREEK AS REQUIRED (SEE DWG LD-9569).
 - REMOVE AND INSTALL NEW TREES AS DIRECTED BY THE CONTRACT ADMINISTRATOR.
 - CONTRACTOR TO PROTECT ADJACENT PROPERTIES AND RESTORE SITE TO PRE-CONSTRUCTION CONDITION.
 - NEW ASPHALT PAVEMENT PATHWAY INSTALLED IN COLERIDGE PARK IN 2018.
 - CONTRACTOR RESPONSIBLE TO OBTAIN REQUIRED PERMITS AS NECESSARY FOR ACCESS, INCLUDING BUT NOT LIMITED TO FROZEN WATERWAYS PERMIT.
 - CONTRACTOR TO RESTORE PARK AREA/ACCESS SITE TO PRE-CONSTRUCTION CONDITION (AS REQUIRED).
 - POSSIBLE SITE ACCESS POINT EXISTS AT COLERIDGE PARK (SEE SITE POTENTIAL ACCESS LOCATION IMAGE). ACCESS FROM THIS POINT WOULD REQUIRE ICE PERMIT & DEVELOPMENT OF ICE THICKNESS FOR RIVER TO SUPPORT CONSTRUCTION LOADING.

NOTE: CHAINAGES SHOWN ARE ALONG ϕ OF 450 HDPE LDS

FOR INDEX PAGE SEE DWG LD-9566



METRIC
WHOLE NUMBERS INDICATE MILLIMETRES
DECIMALIZED NUMBERS INDICATE METRES

PROPERTY LIMITS DELINEATION
DELINEATION OF PROPERTY LIMITS AS SHOWN ON THIS DWG DOES NOT REPRESENT A "LEGAL SURVEY". KGS GROUP MAKES NO REPRESENTATION OR WARRANTY AS TO THE ACCURACY OF PROPERTY LIMITS DELINEATED ON THIS DWG, NOR ON THE DIMENSIONAL ACCURACY OF DWG FEATURES RELATIVE TO THOSE PROPERTY LIMITS.

WARNING
IF POWER EQUIPMENT OR EXPLOSIVES ARE TO BE USED FOR EXCAVATION ON THIS PROJECT THE CONTRACTOR MUST:
1) NOTIFY THE GAS COMPANY OF THE PROPOSED LOCATION OF EXCAVATION.
2) TAKE PRECAUTION TO AVOID DAMAGE TO GAS COMPANY INSTALLATIONS.
SEE PROVINCIAL REGULATION 210/72 FOR DETAILS

LOCATION APPROVED UNDERGROUND STRUCTURES
SUPV. U/G STRUCTURES COMMITTEE DATE
NOTE:
LOCATION OF UNDERGROUND STRUCTURES AS SHOWN ARE BASED ON THE BEST INFORMATION AVAILABLE BUT NO GUARANTEE IS GIVEN THAT ALL EXISTING UTILITIES ARE SHOWN OR THAT THE GIVEN LOCATIONS ARE EXACT. CONFIRMATION OF EXISTENCE AND EXACT LOCATION OF ALL SERVICES MUST BE OBTAINED FROM THE INDIVIDUAL UTILITIES BEFORE PROCEEDING WITH CONSTRUCTION.

| B.M. ELEV. | NO. | REVISIONS | DATE | BY |
|------------|-----|---------------------|------------|-----|
| | 1 | REISSUED FOR TENDER | 2019 11 25 | RBO |
| | 0 | ISSUED FOR TENDER | 2019 11 15 | RBO |

| | | | | | |
|------------------|--|-------------|-------|---------------------------|------------|
| KGS GROUP | | DESIGNED BY | NGV | CHECKED BY | RBO |
| | | DRAWN BY | GEL | APPROVED BY | RBO |
| SCALE: | | HORIZONTAL | 1:250 | RELEASED FOR CONSTRUCTION | KZ |
| | | VERTICAL | 1:50 | DATE | 2019 11 14 |
| PLOT DATE: | | 2019 11 26 | | | |

ES ENGINEERS GEOSCIENTISTS MANITOBA
Certificate of Authorization
KGS Group
No. 245

ENGINEER'S SEAL
R.B. OFFMAN
Member
24701
PROFESSIONAL ENGINEER

THE CITY OF WINNIPEG
WATER AND WASTE DEPARTMENT
ENGINEERING DIVISION

LODGE AVENUE OUTFALL
RENEWAL AND REHABILITATION
COLERIDGE PARK DRIVE OUTFALL
PLAN AND PROFILE
S-MA70011167

SHEET 6 OF 7
CITY DRAWING NUMBER
LD-9573