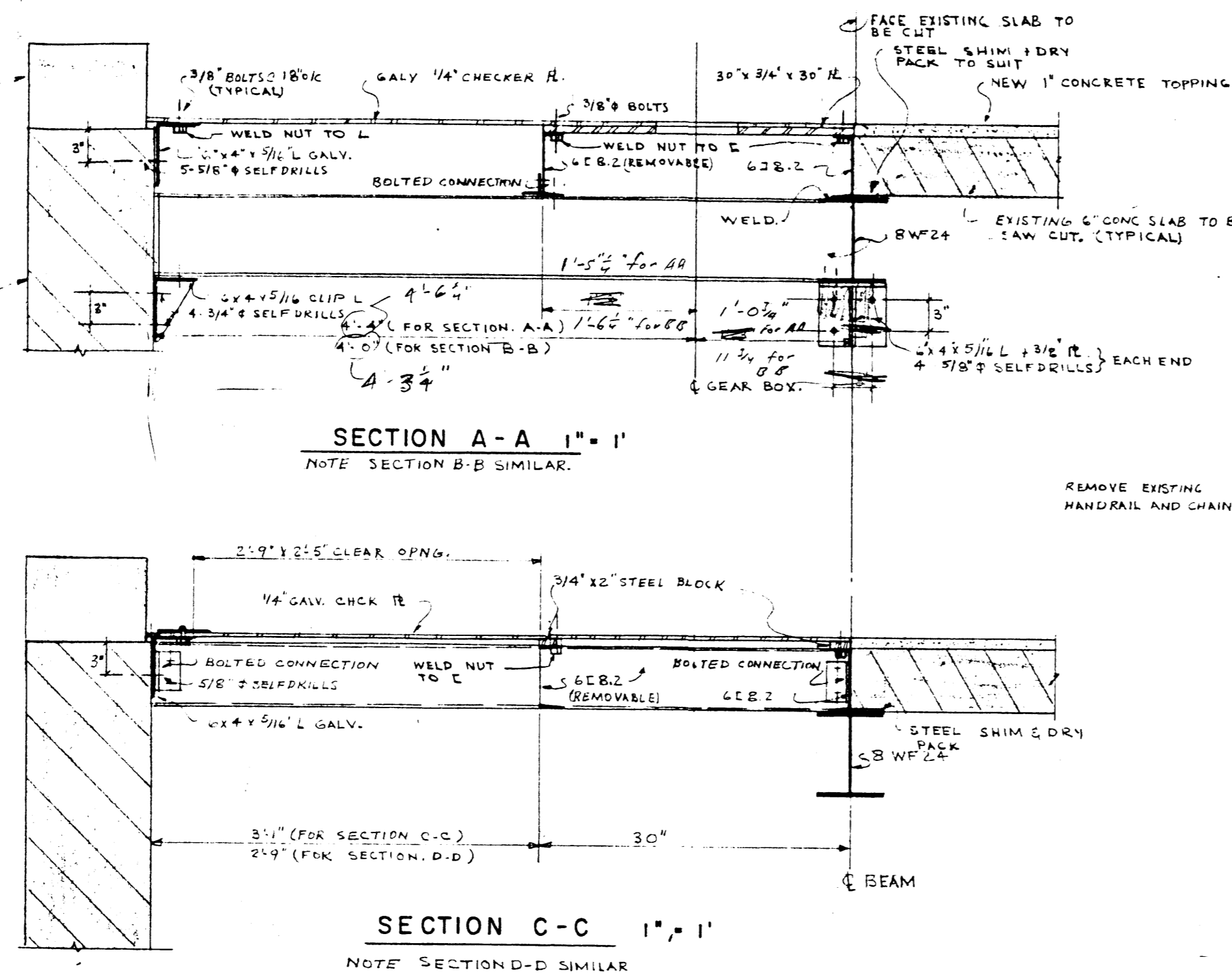
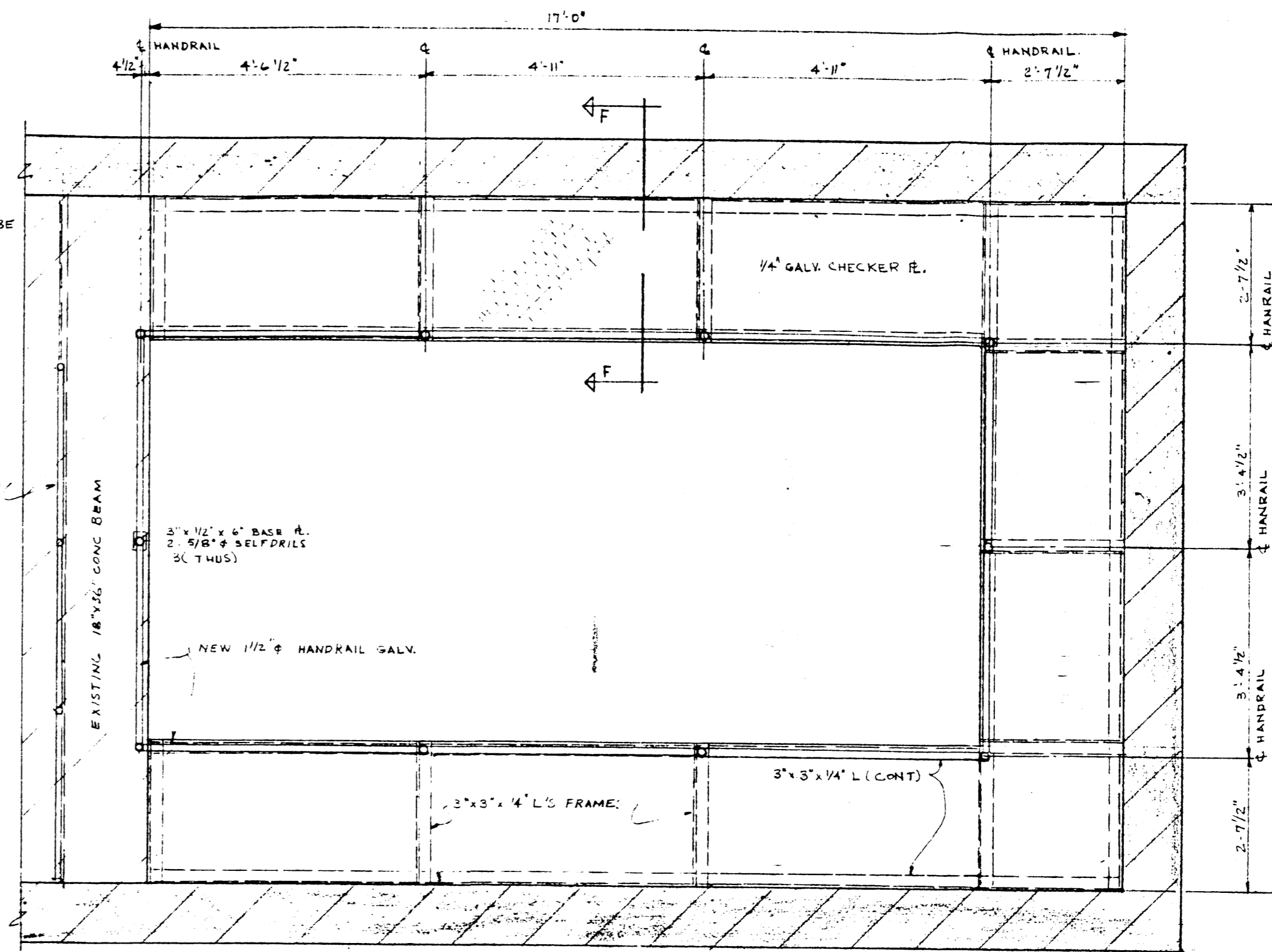


PLAN AT FL. ELEV. 75.78'

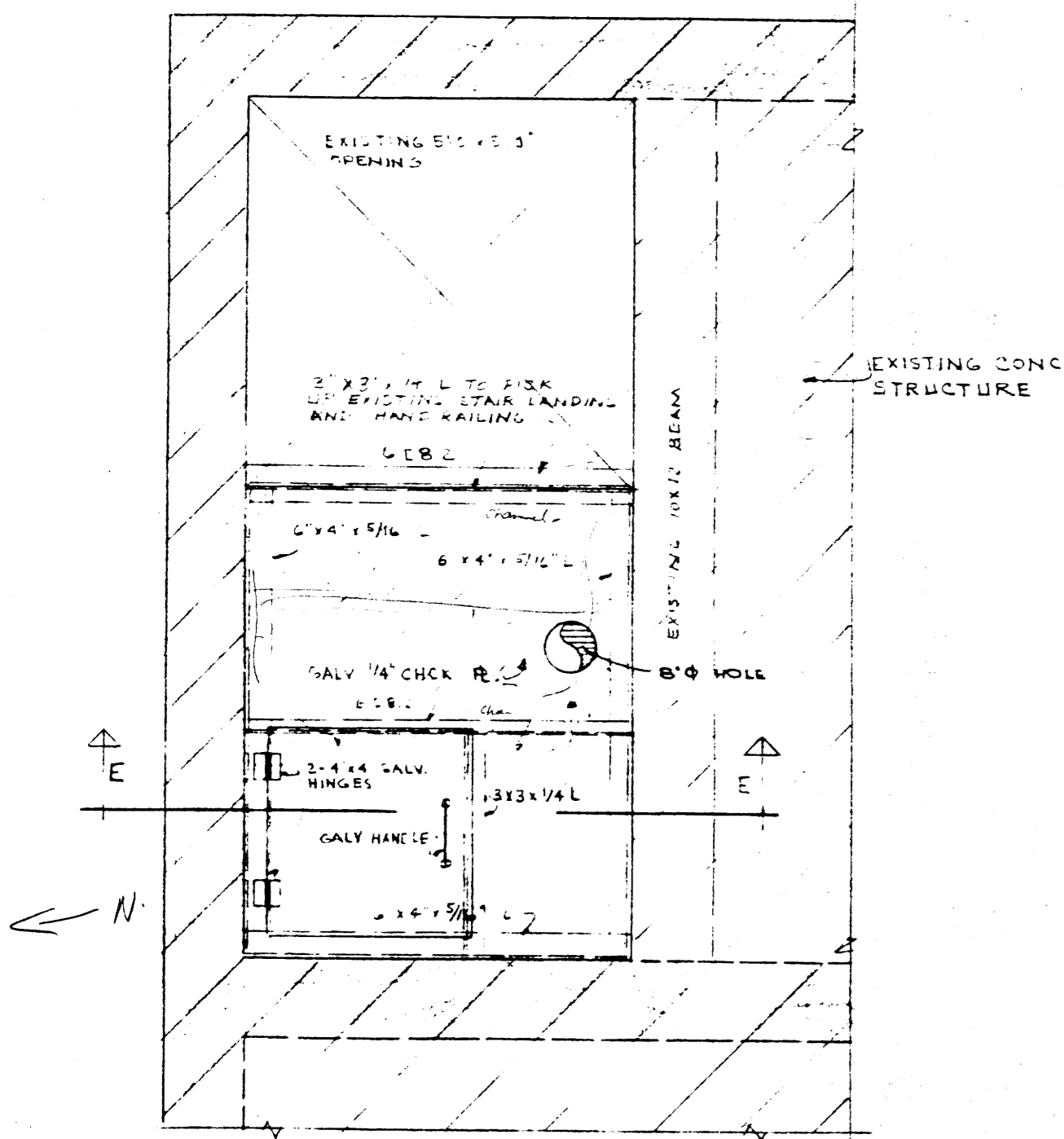


SECTION A-A 1" = 1"
NOTE SECTION B-B SIMILAR.

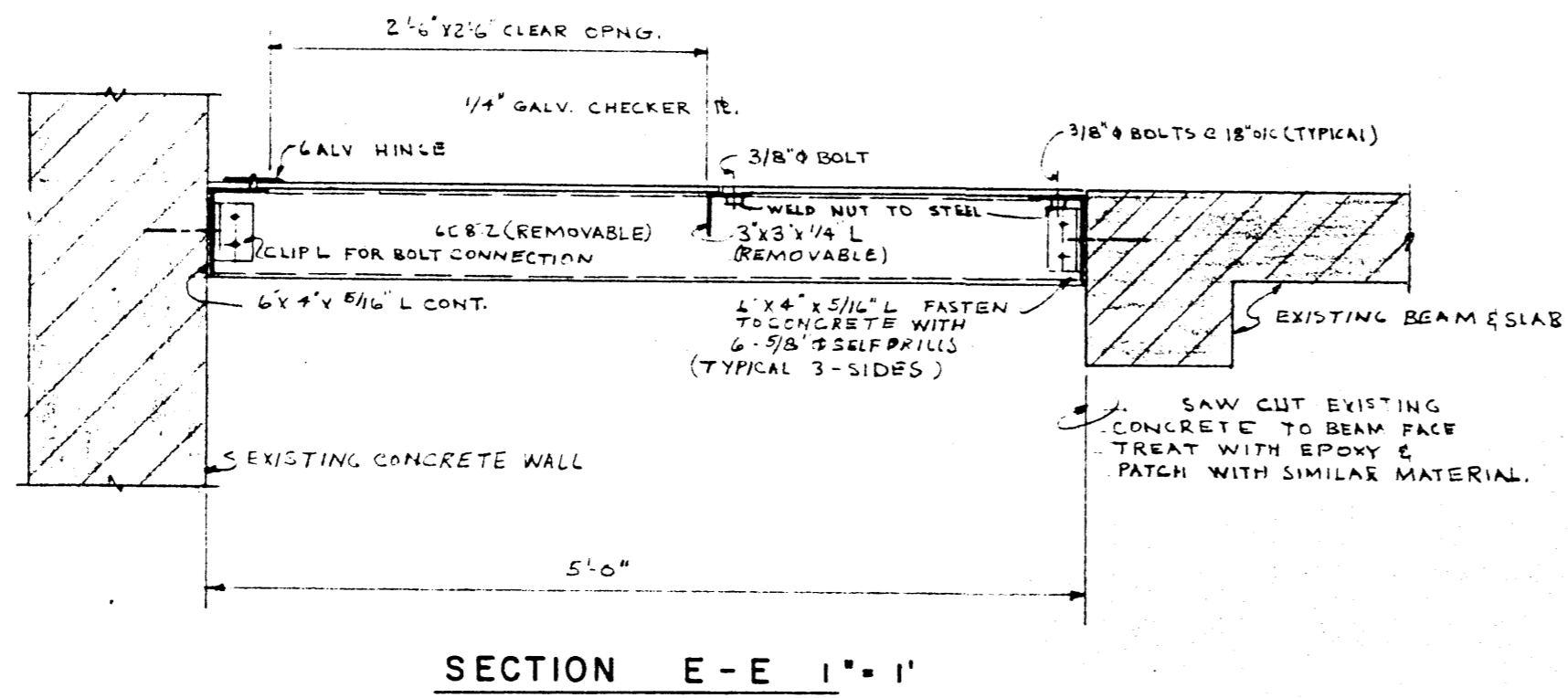
SECTION C-C 1" = 1"
NOTE SECTION D-D SIMILAR.



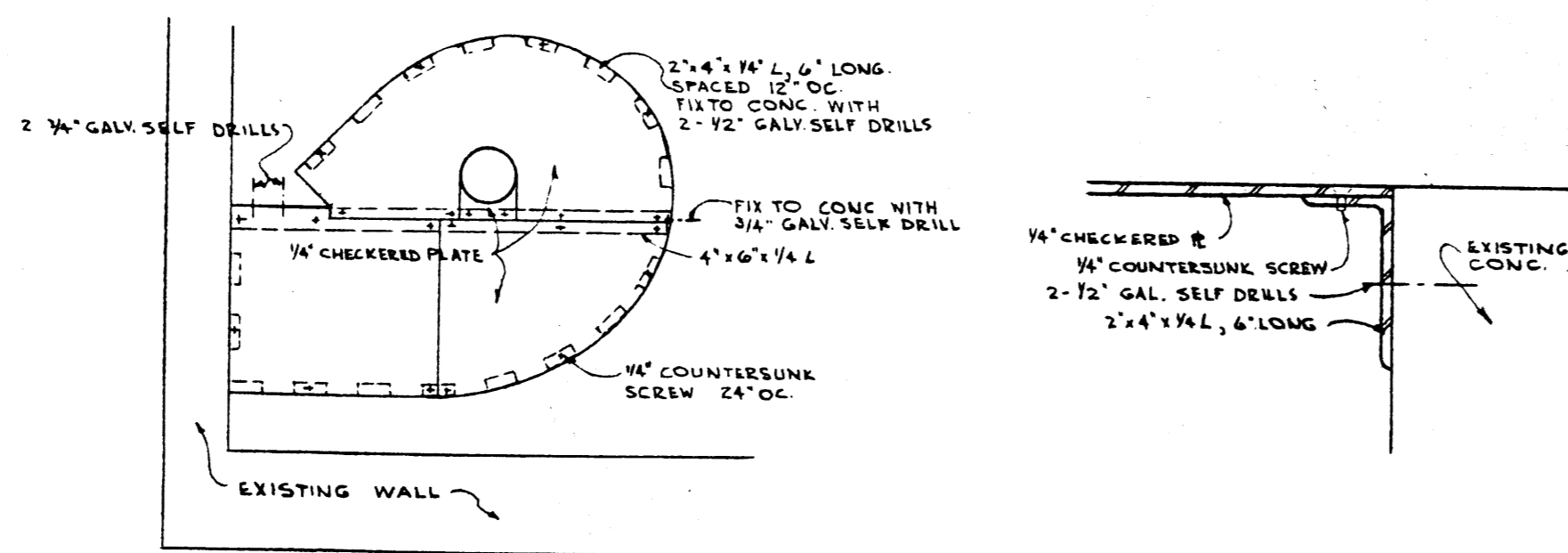
PLAN AT FLOOR ELEV. 53.19'



PLAN AT FL. ELEV. 64.93'



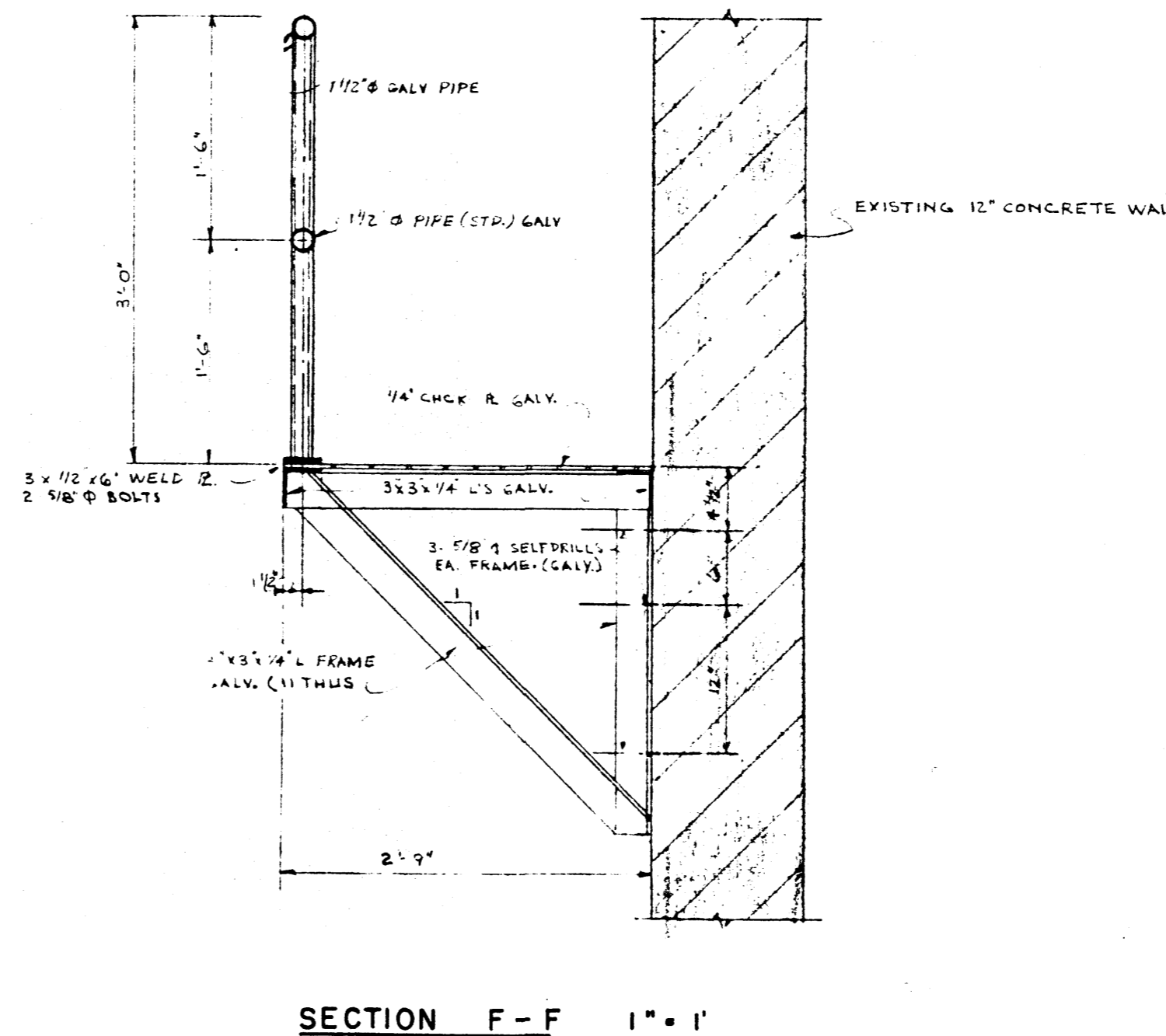
SECTION E-E 1" = 1'



PLAN 3/8" = 1'

DETAIL 3" = 1'

DETAILS OF COMMUNITER COVER



SECTION F-F 1" = 1'

GENERAL NOTES
 1. ALL STRUCTURAL STEEL SHALL BE G40.12
 2. ALL BOLTS SHALL BE HIGH STRENGTH A325 BOLTS
 3. WELDING SHALL CONFORM TO CSA SPECIFICATION W59 AND SHALL BE UNDERTAKEN BY FABRICATORS FULLY APPROVED BY THE CANADIAN WELDING BUREAU TO CSA SPECIFICATION W47.

NO.	DESCRIPTION	DATE	DWN.	CKD.
REVISIONS				

APPROVED BY: *[Signature]* DATE: *[Signature]*

MUNICIPALITY OF ASSINIBOIA
 WESTWOOD DR. SEWAGE PUMPING STATION
 BUILDING SECTIONS & DETAILS

UNDERWOOD McLELLAN & ASSOCIATES LIMITED
 CONSULTING PROFESSIONAL ENGINEERS
 MANITOBA SASKATCHEWAN ALBERTA BRITISH COLUMBIA

DRAWN BY R.T.C.	DESIGNED BY R.T.C.
CHECKED BY	CHECKED BY <i>[Signature]</i>
DATE DRAWN NOV. 25, 1988.	SCALE 1/2" = 1'
JOB NO. 41-02-063-98-01	DRAWING NO.
SHEET 5 OF 6	S-2

file # SP 1025/1108

8011