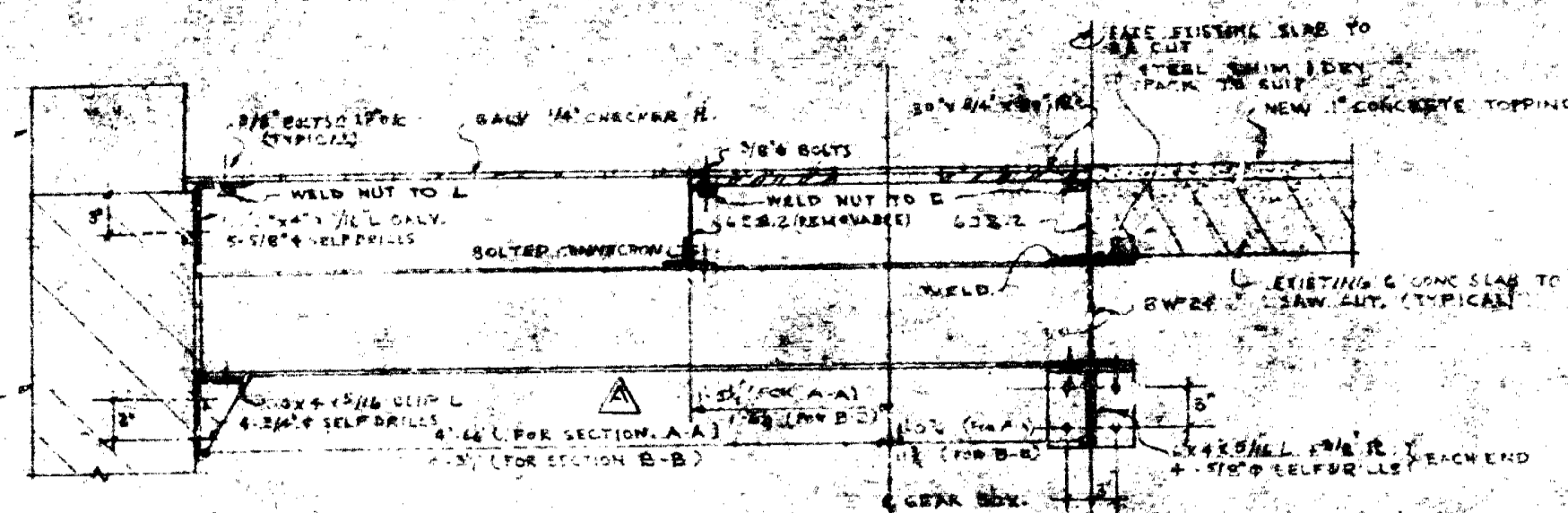
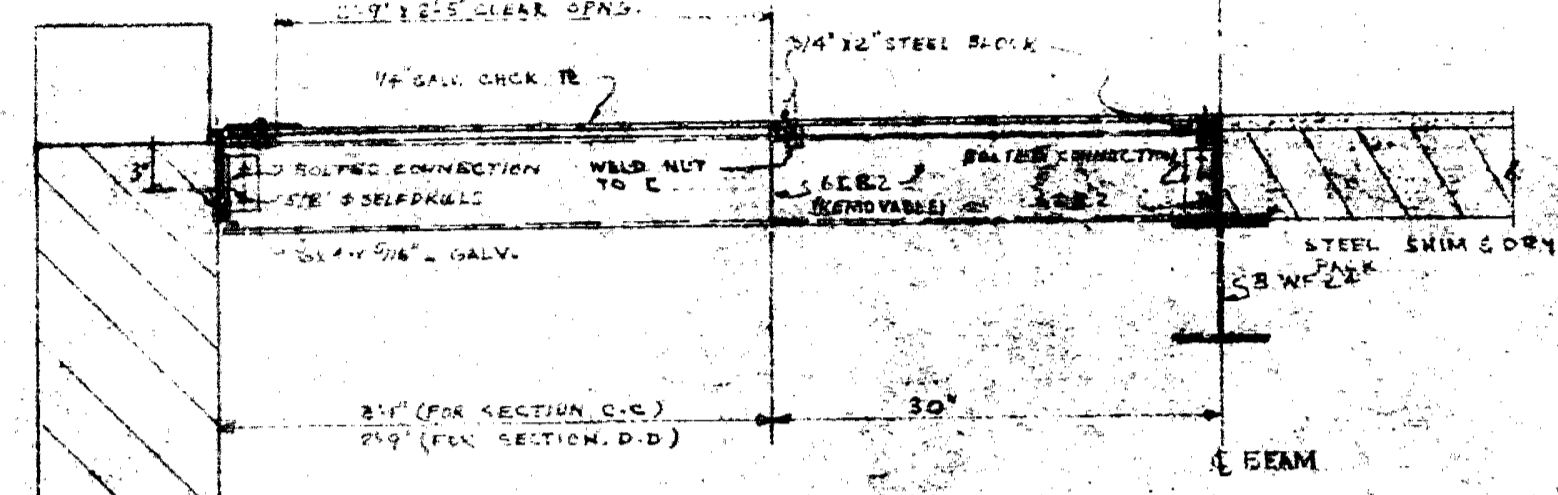


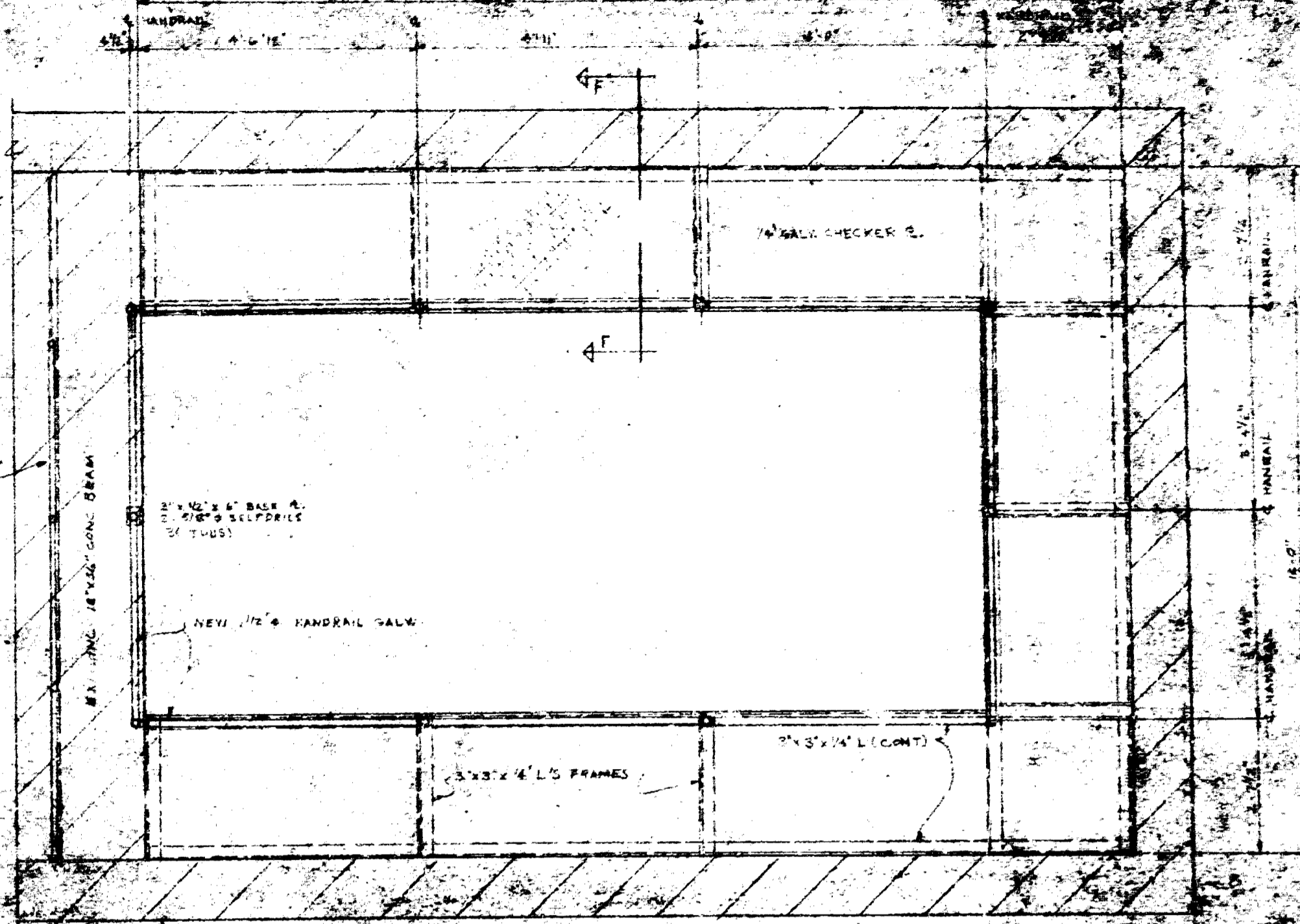
PLAN AT FL. ELEV. 75.78'



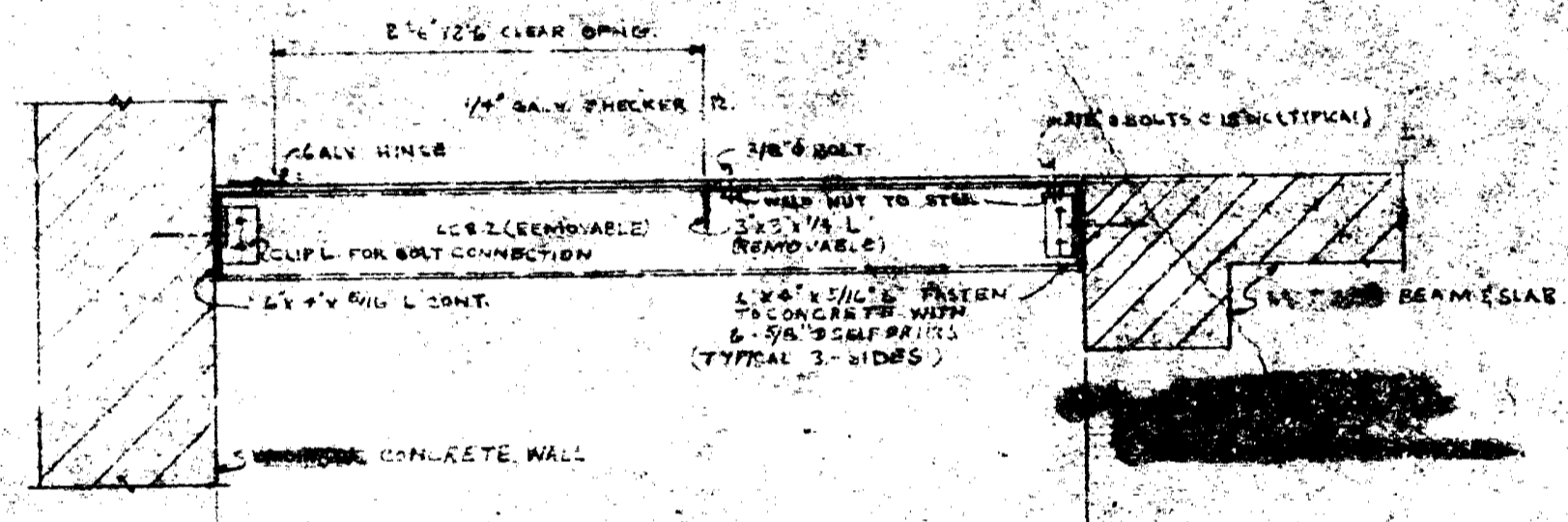
SECTION A-A 1" = 1'
NOTE SECTION B-B SIMILAR.



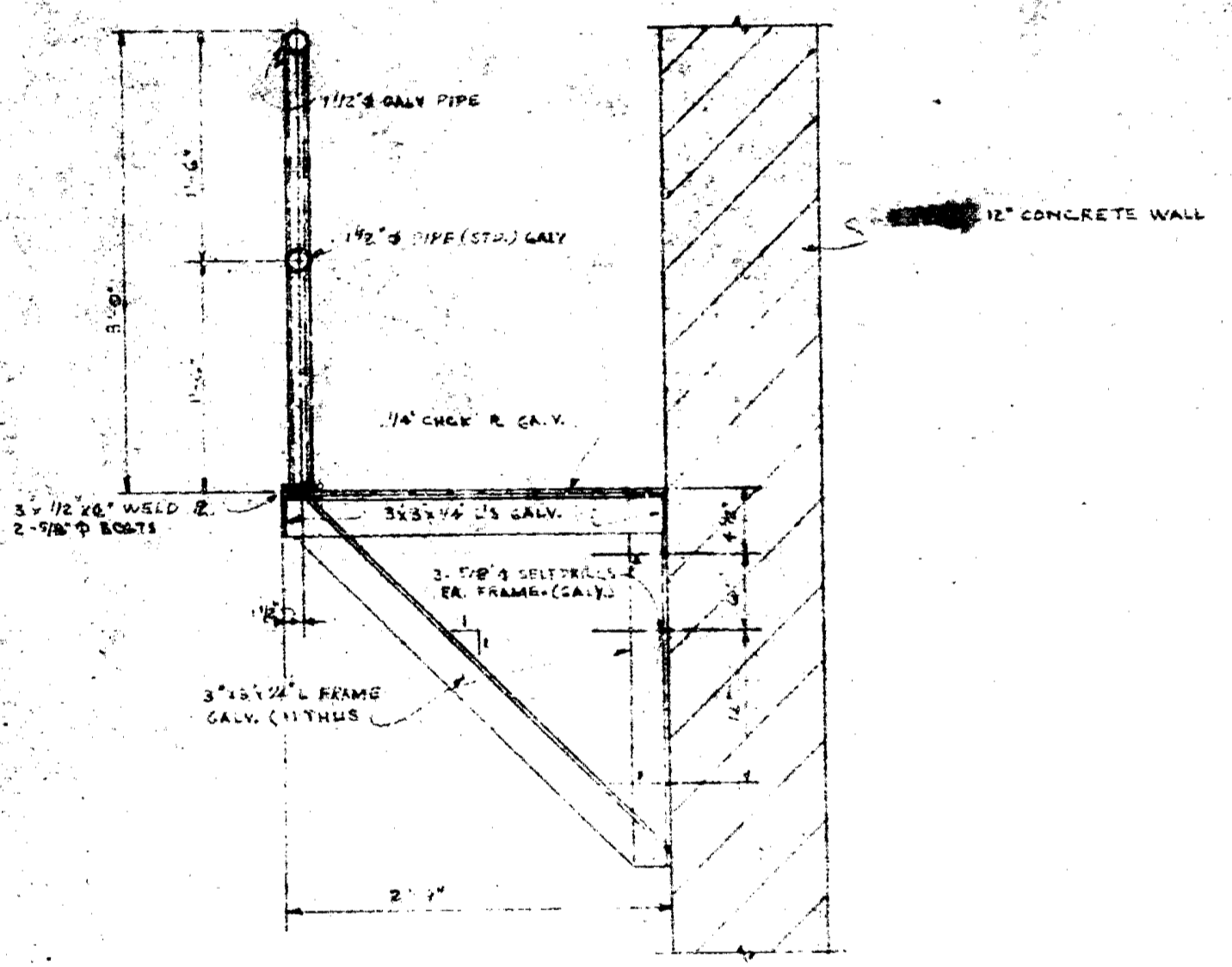
SECTION C-C 1" = 1'
NOTE SECTION D-D SIMILAR.



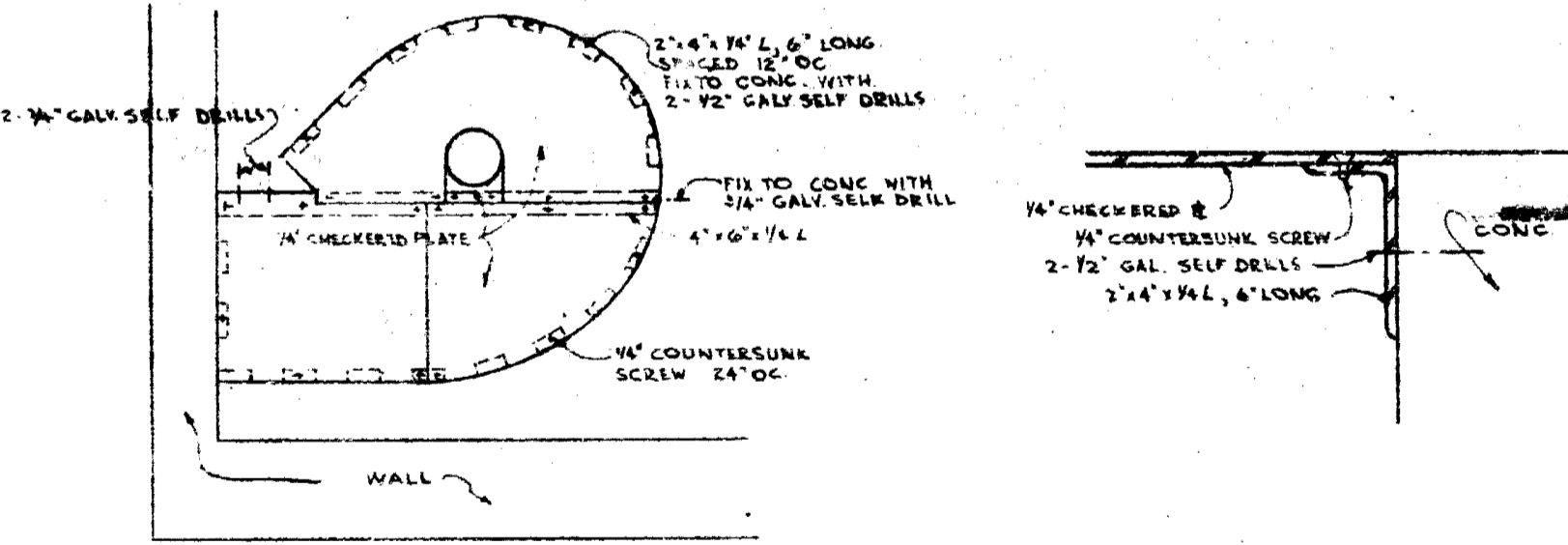
PLAN AT FLOOR ELEV. 53.19'



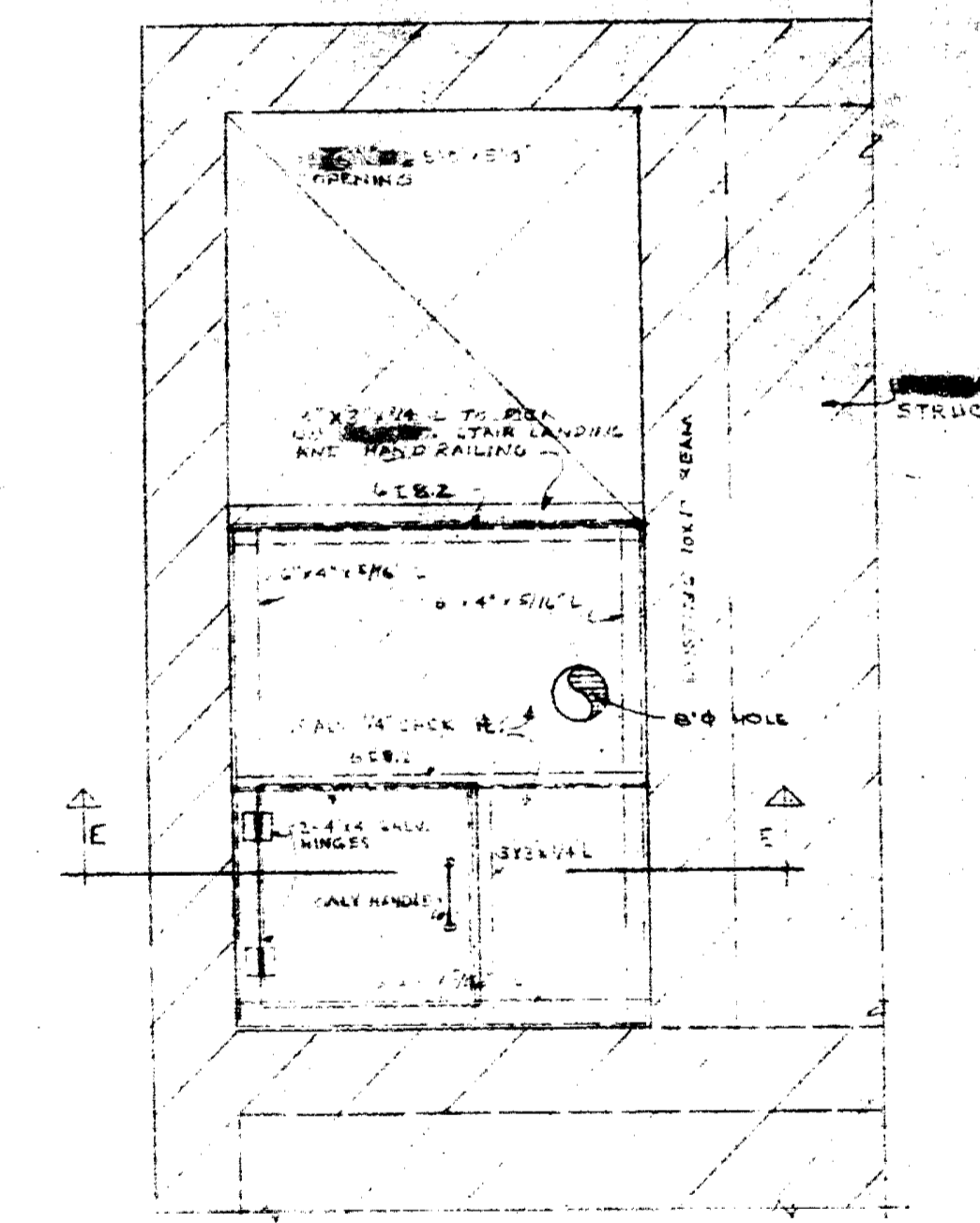
SECTION E-E 1" = 1'



SECTION F-F 1" = 1'



DETAIL 3" = 1'



PLAN AT FL. ELEV. 64.93'

PLAN 5/8" = 1'

DETAILS OF COMMUTER COVER

GENERAL NOTES:
 1. ALL STRUCTURAL STEEL
 2. ALL BOLTS
 3. WELDS

NO.	DESCRIPTION	DATE	OWN	CHK.
REVISIONS				

PROVINCE OF MANITOBA
 A. F. EDWARDS
 REGISTERED ENGINEER

APPROVED BY: _____ DATE: _____

MUNICIPALITY OF ASSINIBOIA
 WESTWOOD DR. SEWAGE PUMPING STATION
 AS BUILT
 BUILDING
 SECTIONS & DETAILS

UNDERWOOD McLELLAN & ASSOCIATES
 LIMITED
 CONSULTING PROFESSIONAL ENGINEERS
 MANITOBA SASKATCHEWAN ALBERTA BRITISH COLUMBIA

DRAWN BY: R.T.C.	DESIGNED BY: C.T.
CHECKED BY: J.H.	CHECKED BY: J.H.
DATE DRAWN: NOV 25, 1968	SCALE: 1/2" = 1'
DWG. NO.: 41-02-063-98-01	DRAWING NO.:

S-2