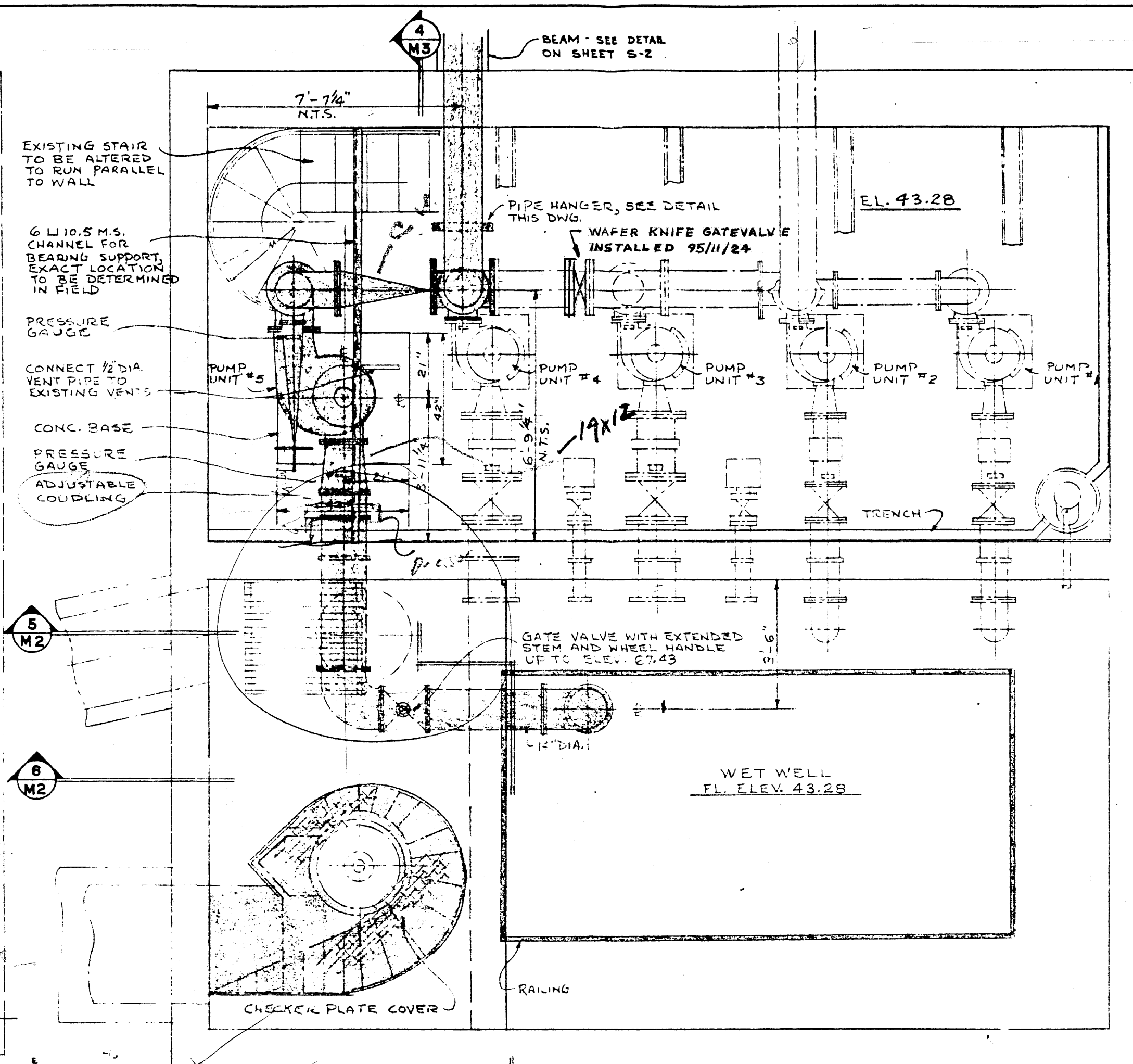
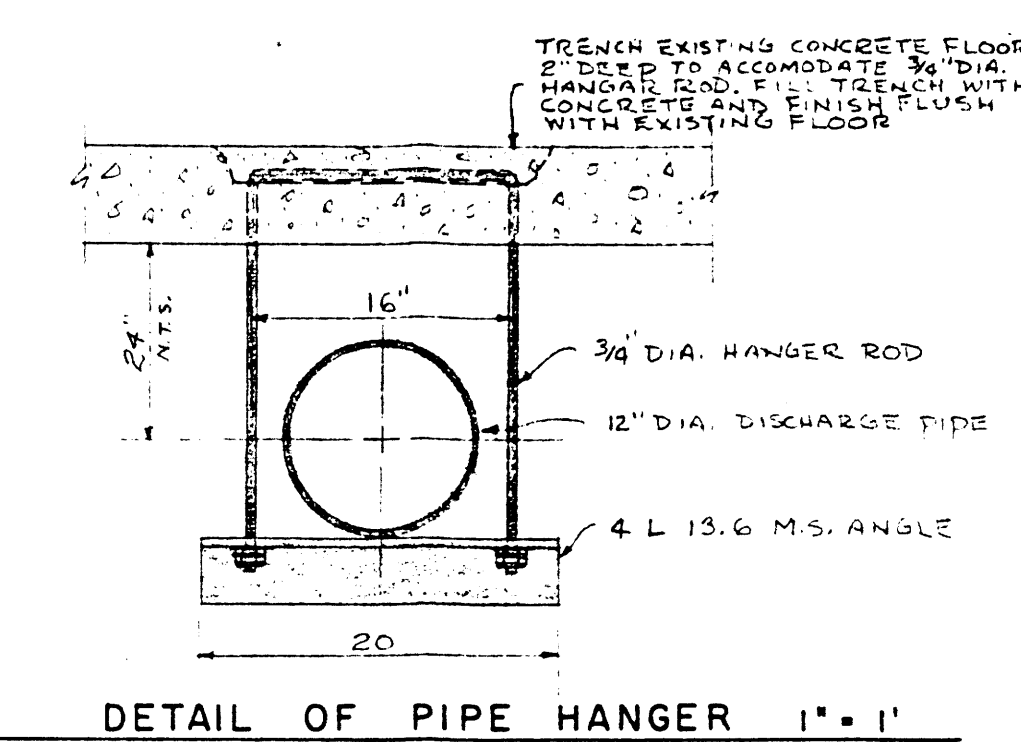


1 PLAN SECTION

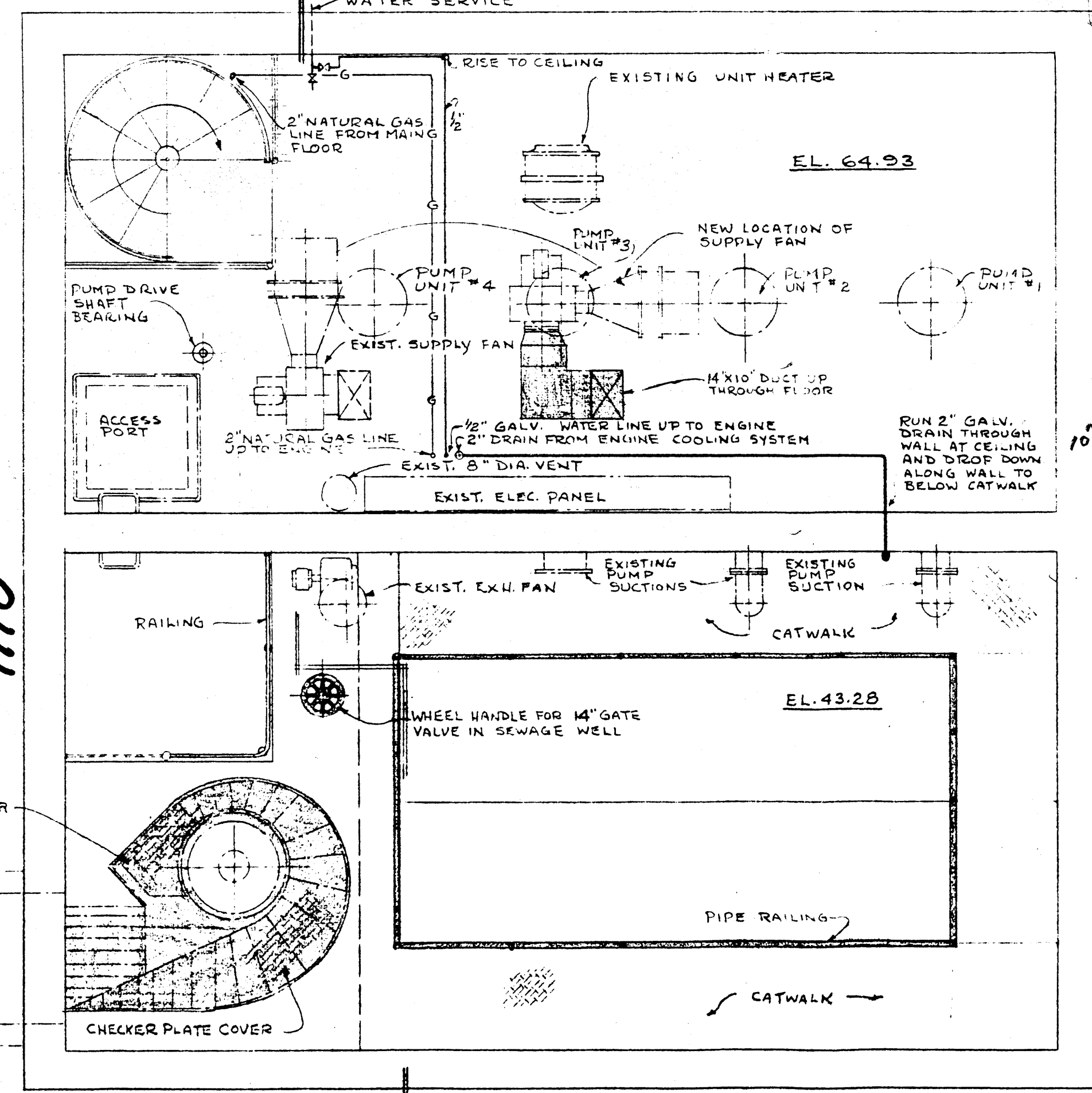


3 PLAN SECTION

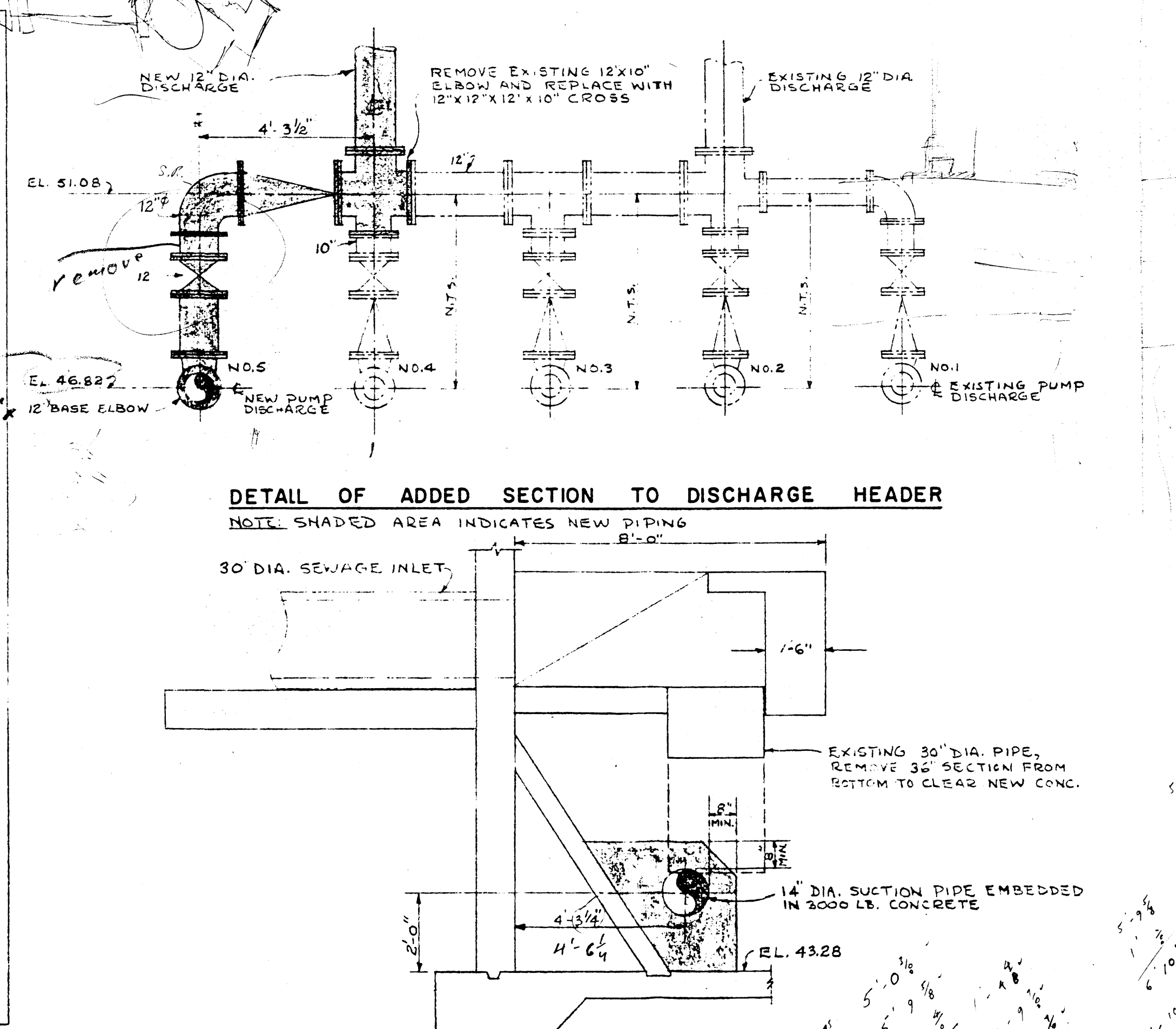


NOTE: ALL MISCELLANEOUS METAL SUCH AS RODS, ANGLES ETC. TO BE GALVANIZED

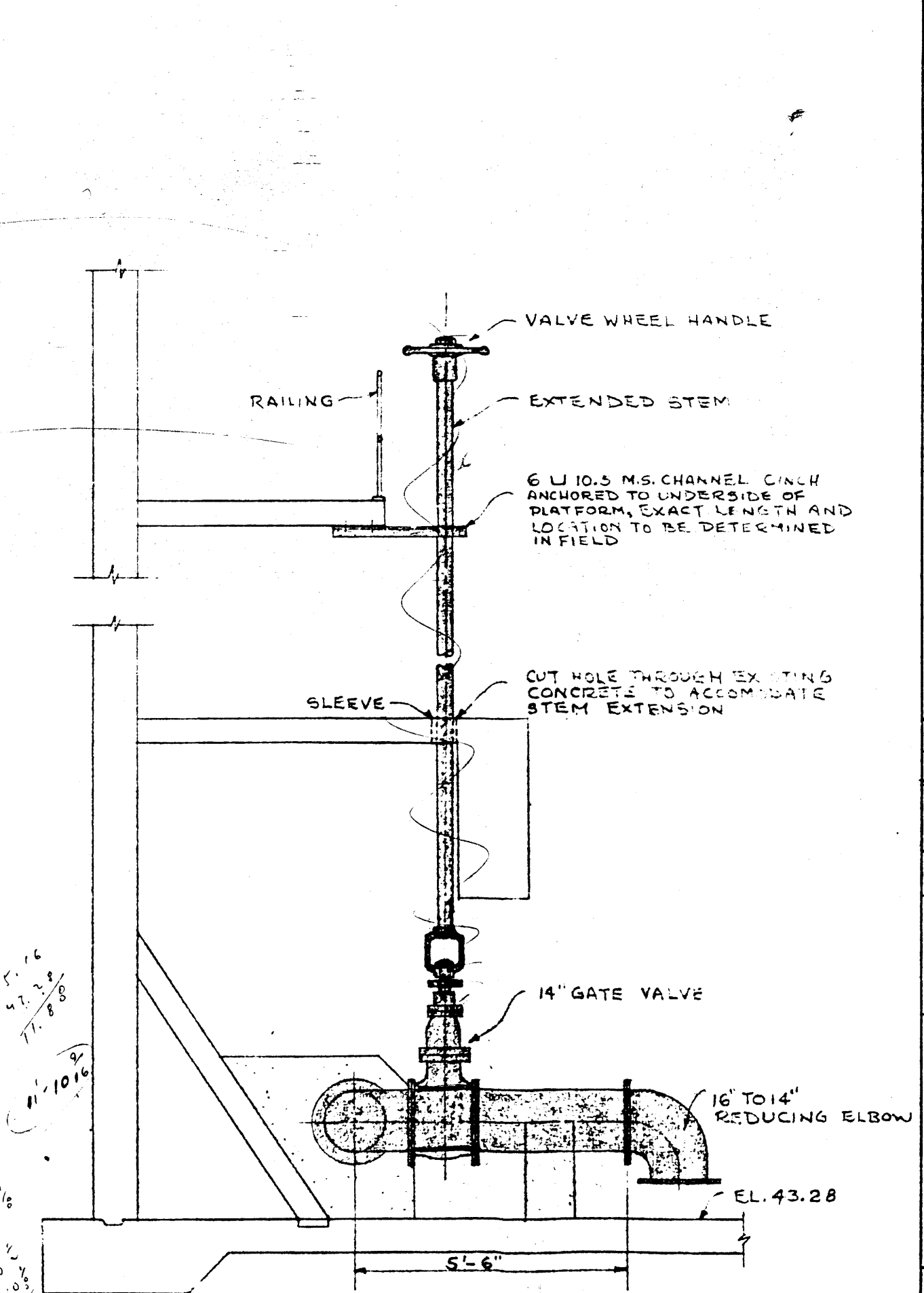
Handwritten notes and calculations:  
 11' 9 1/2"  
 5' 9 1/2"  
 6' 0 1/2"  
 1' 0 1/2"  
 5' 0 1/2"  
 11' 10 1/2"  
 6' 10 1/2"  
 5' 0 1/2"



2 PLAN SECTION



5 SECTION



6 SECTION

NO.	DESCRIPTION	DATE	DWN.	CKD.
REVISIONS				



APPROVED BY: *[Signature]* DATE: *[Date]*

**MUNICIPALITY OF ASSINIBOIA**  
 WESTWOOD DR. SEWAGE PUMPING STATION

MECHANICAL  
 PLANS & DETAILS

**UNDERWOOD McLELLAN & ASSOCIATES**  
 LIMITED

CONSULTING PROFESSIONAL ENGINEERS  
 MANITOBA SASKATCHEWAN ALBERTA BRITISH COLUMBIA

DRAWN BY: E. B.	DESIGNED BY: <i>[Signature]</i>
CHECKED BY: <i>[Signature]</i>	CHECKED BY: <i>[Signature]</i>
DATE DRAWN: NOV. 25, 1988.	SCALE: 3/8" = 1'
JOB NO. 41-02-063-98-01	DRAWING NO.
SHEET 2 OF 6	

M-2

File # SP16287