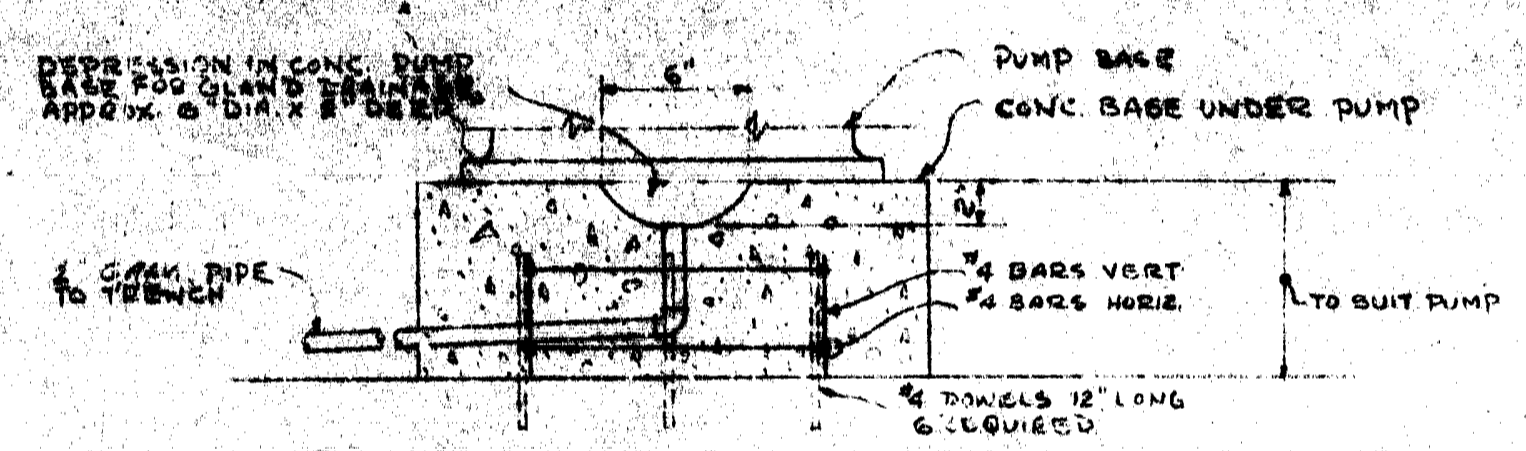
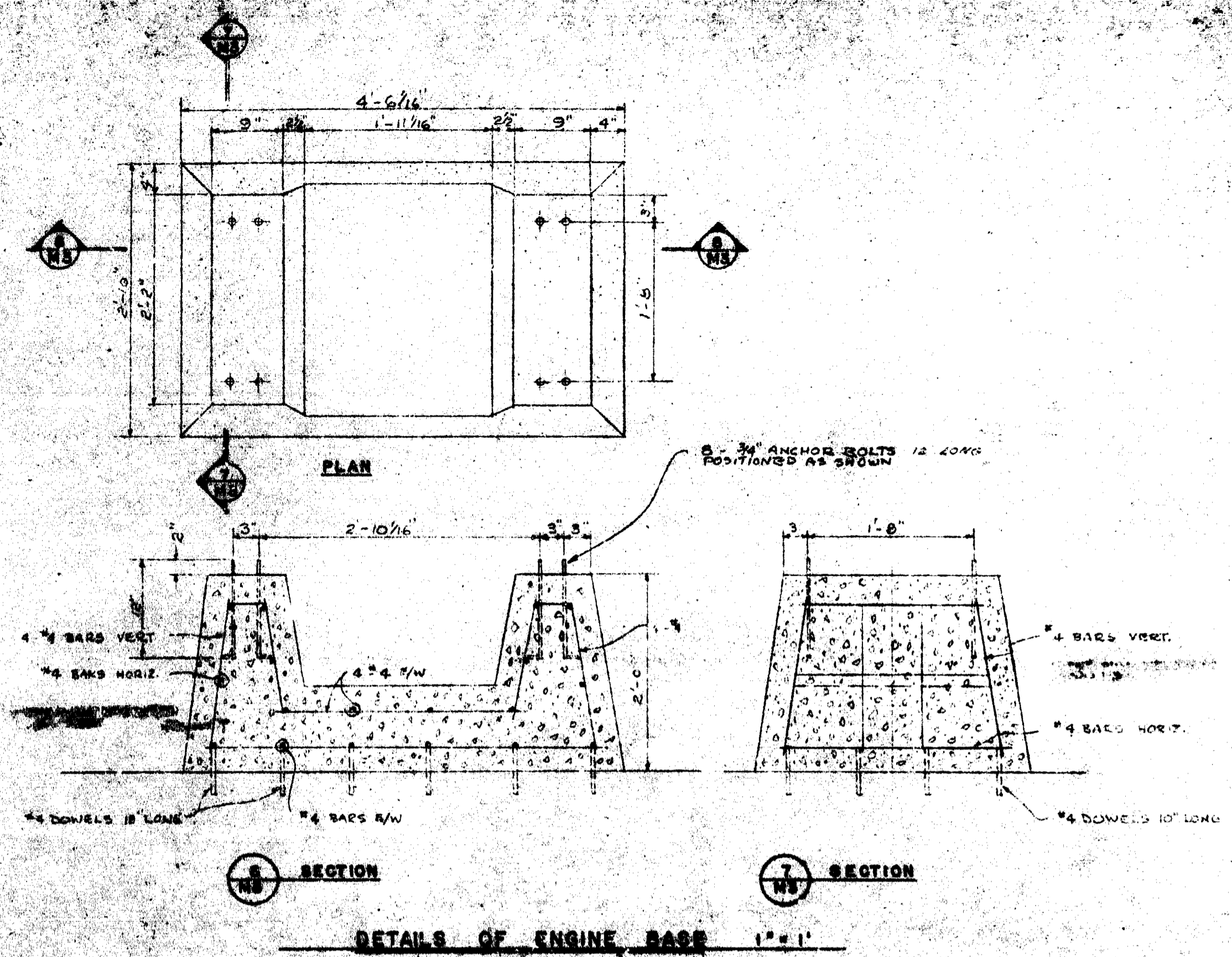
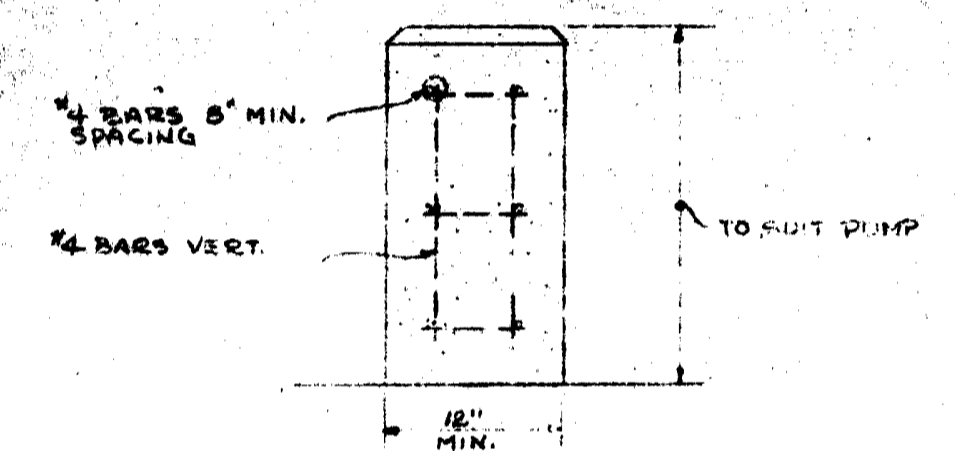


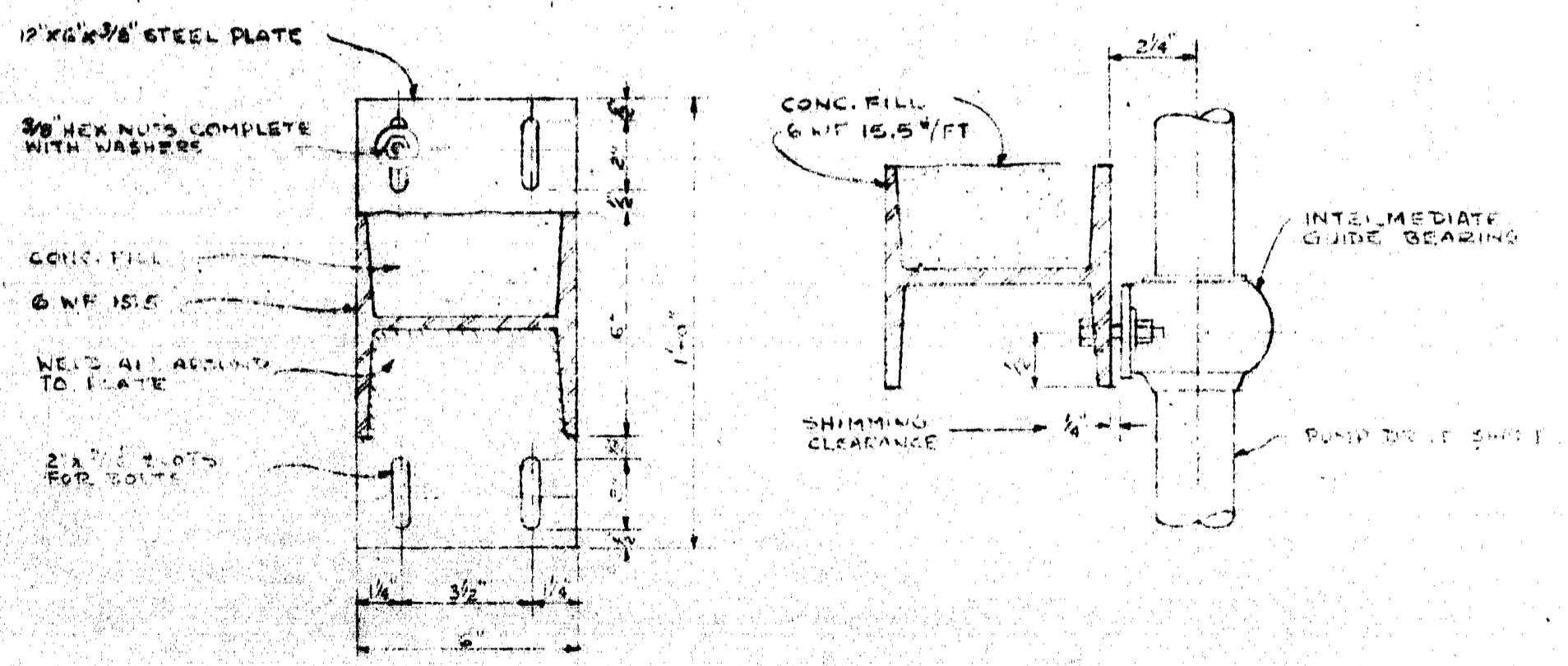
4 SECTION  
M3



DETAIL OF DRAIN UNDER PUMP BASE N.T.S.



DETAIL OF PUMP DISCHARGE ELBOW SUPPORT N.T.S.



BEARING STEADY SUPPORT 3/4\"/>

NO.	REVISION	DESCRIPTION	D/Y/E	D/VN.	CHK.

REVISIONS	

APPROVED BY \_\_\_\_\_ DATE \_\_\_\_\_

**MUNICIPALITY OF ASSINIBOIA**  
 WESTWOOD DR. SEWAGE PUMPING STATION  
 AS BUILT  
 MECHANICAL  
 SECTIONS & DETAILS

**UNDERWOOD McLELLAN & ASSOCIATES**  
 LIMITED

CONSULTING PROFESSIONAL ENGINEERS  
 MANITOBA SASKATCHEWAN ALBERTA BRITISH COLUMBIA

DRAWN BY E. B.	DESIGNED BY
CHECKED BY	CHECKED BY
DATE DRAWN NOV. 25, 1988.	SCALE 3/8" = 1'
JOB NO. 41-02-063-98-01	DRAWING NO.
SHEET 3 OF 6	AB M-3