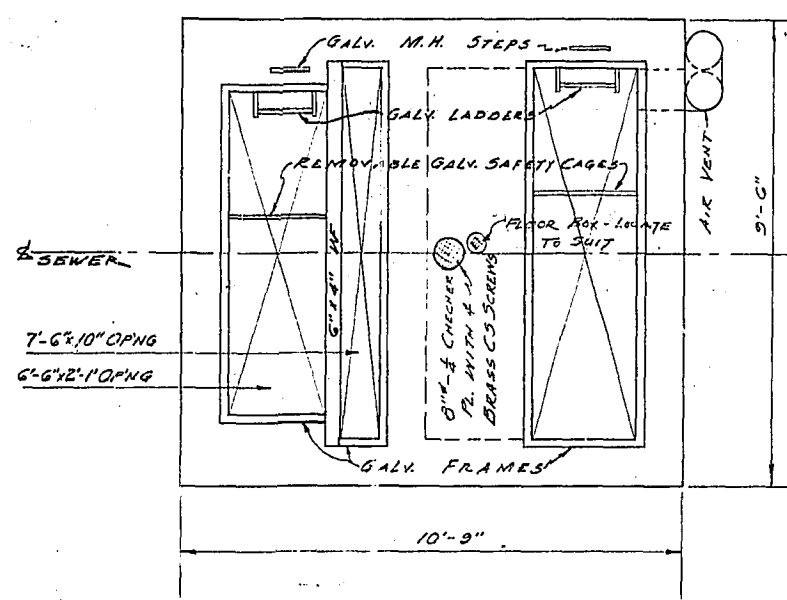
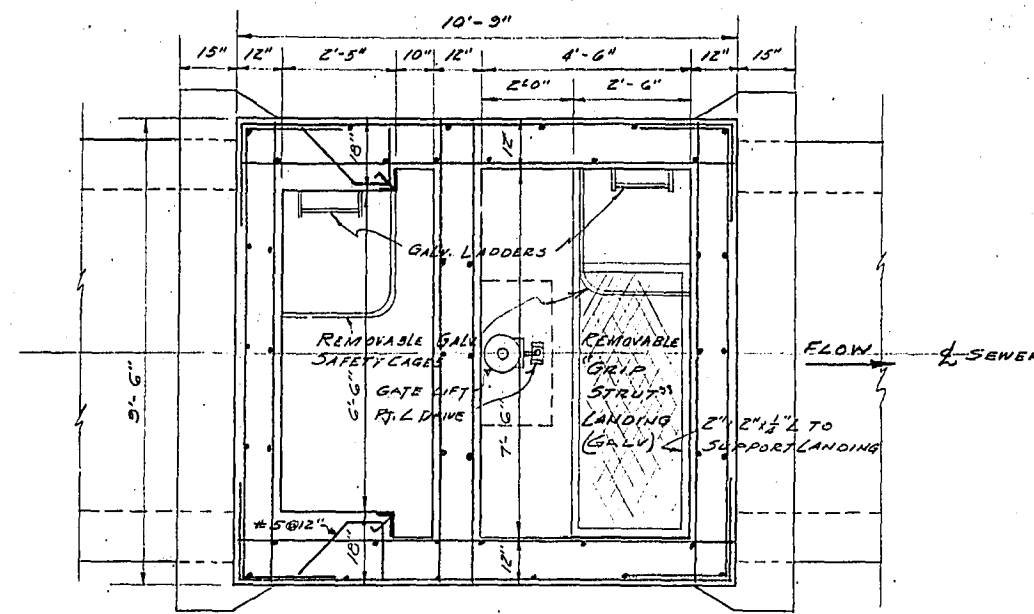


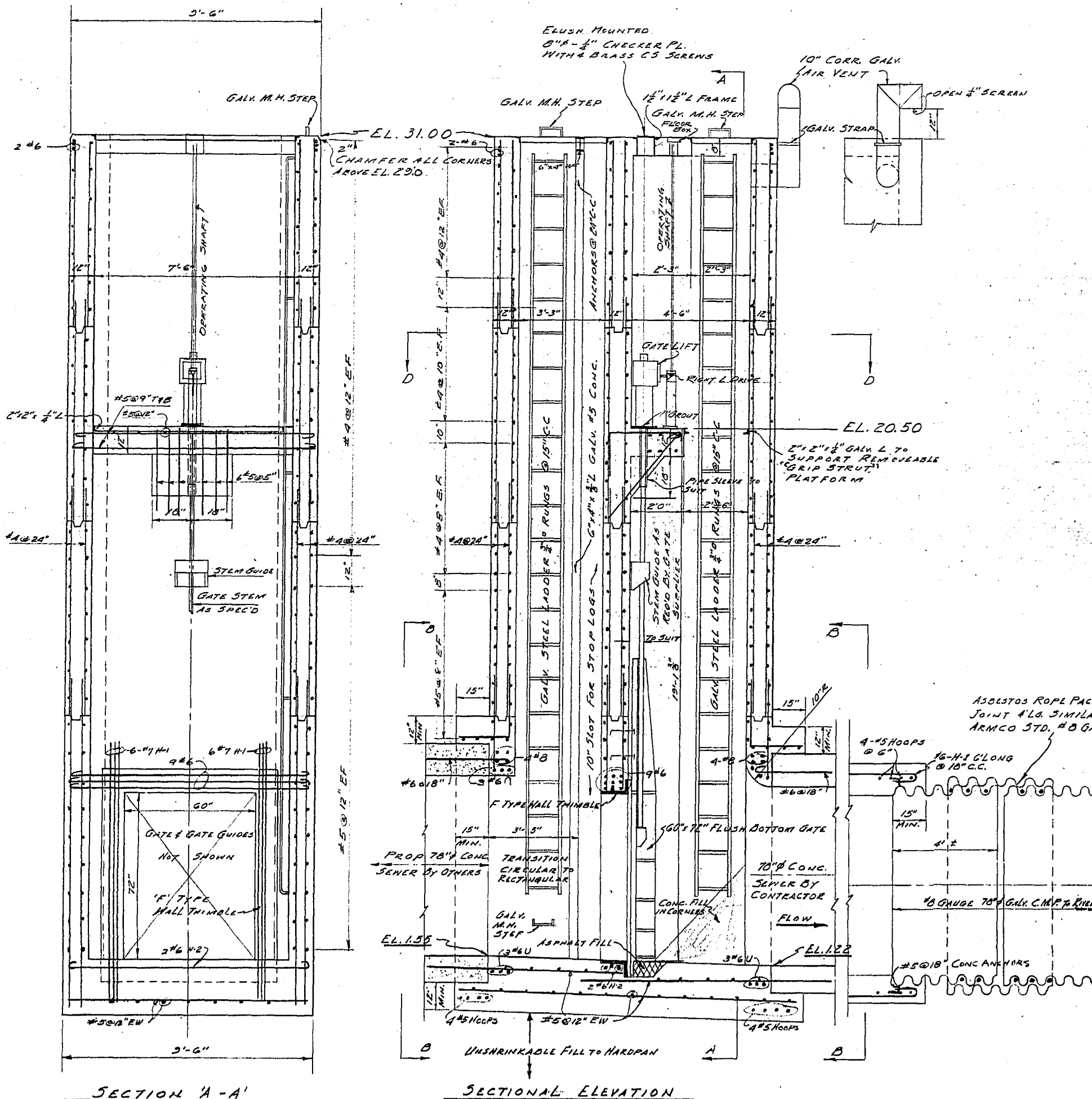
HATCH COVERS & FRAMES



TOP PLAN

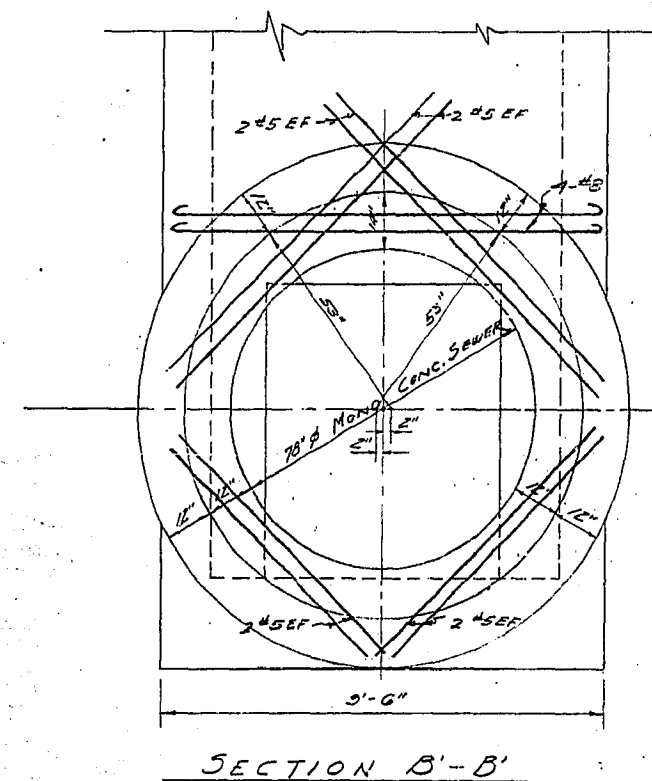


SECTION D-D'

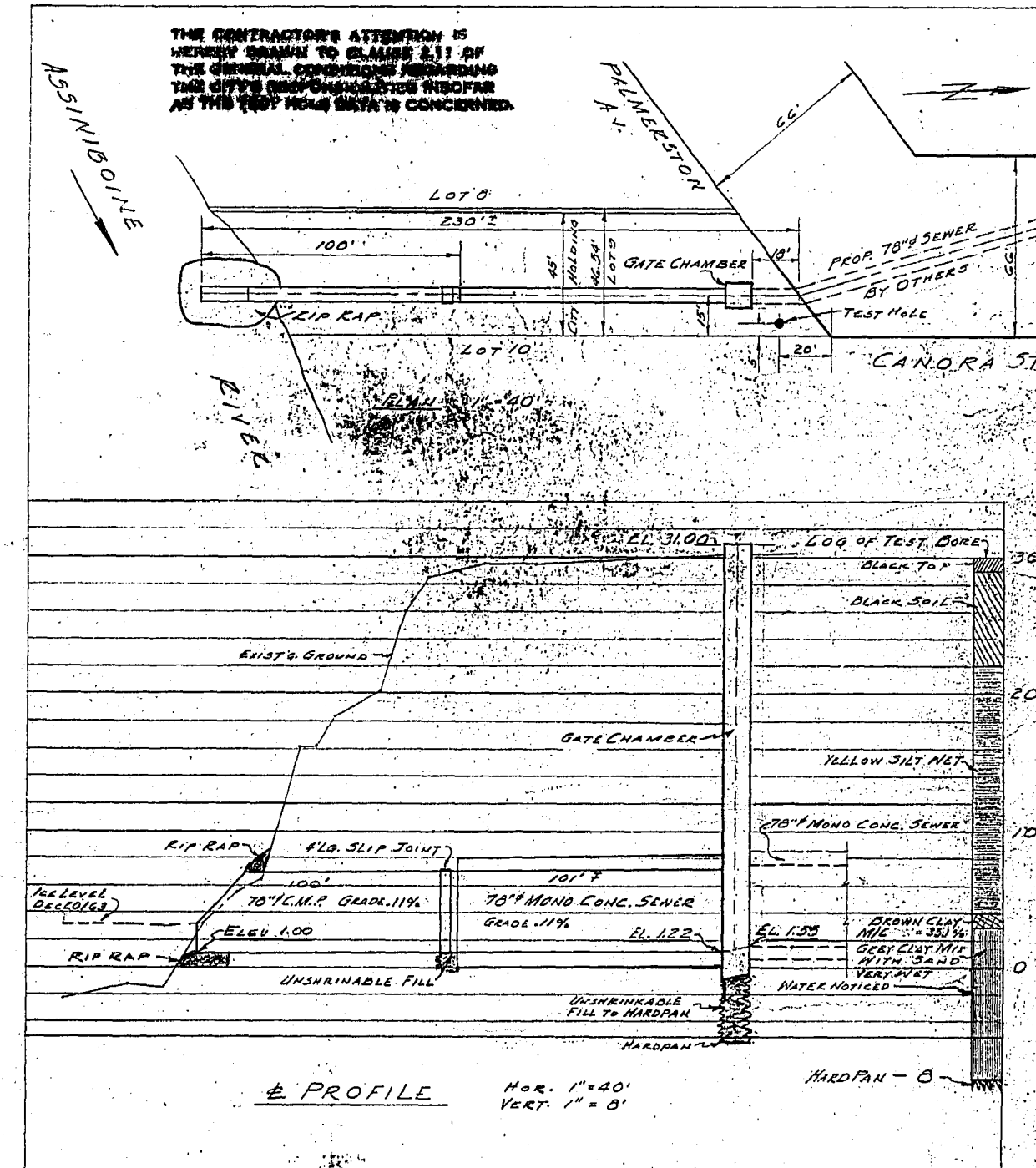


SECTION A-A'

SECTIONAL ELEVATION



SECTION B-B'



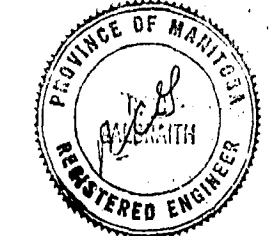
E PROFILE

RIVERS & STREAMS PROTECTION APPROVAL REQ'D.
 H. REIMERS, DATE 10/13/64

PROVINCIAL DYKING BOARD APPROVAL REQ'D.
 H. REIMERS, DATE 10/13/64
 FINAL 25/1/64

N.M. & W.O. JAN 23, 1964 N.R.

NOT TO BE REPRODUCED OR TRANSMITTED IN ANY FORM OR BY ANY MEANS, ELECTRONIC OR MECHANICAL, INCLUDING PHOTOCOPYING, RECORDING, OR BY ANY INFORMATION STORAGE AND RETRIEVAL SYSTEM.



DETAILS, CANORA STREET GATE CHAMBER AND OUTFALL

CITY OF WINNIPEG
 ENGINEERING DEPARTMENT
 DRAWN BY: J.C.G. DATE: 10/13/64
 CHECKED BY: H.C. DATE: 11/11/64
 APPROVED BY: H.C. DATE: 11/11/64
 SCALE: 3\"/>