

APPENDIX 'C'

CONSTRUCTION STAGING SKETCHES

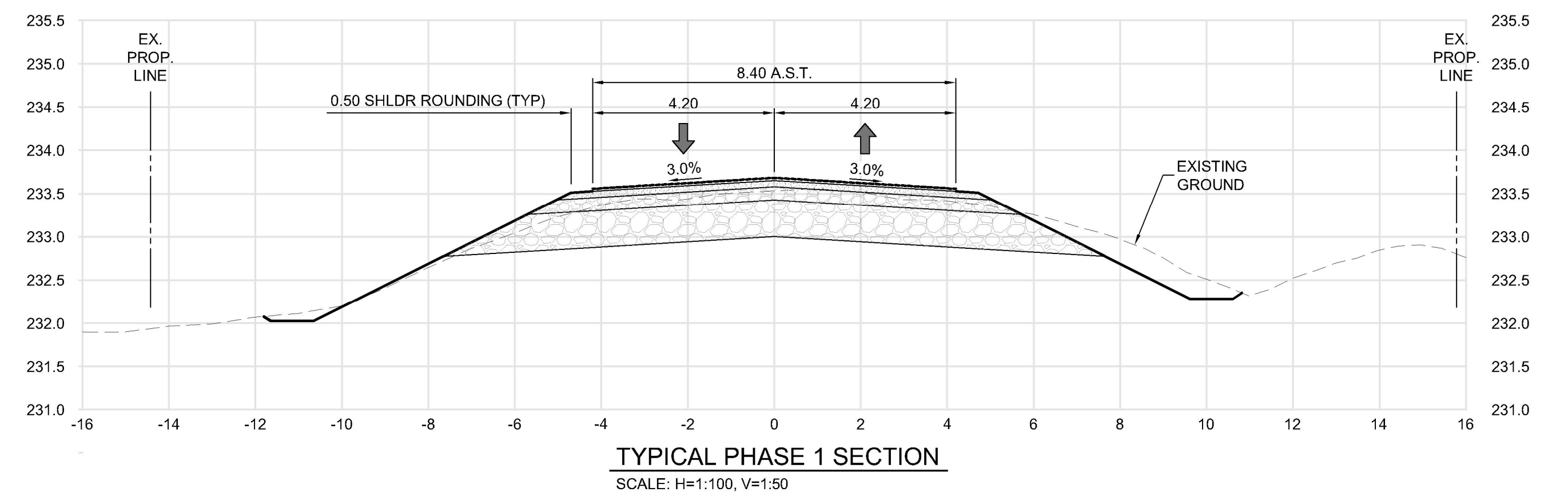


FULL CLOSURE

KEY MAP



PLAN - PHASE 1
SCALE: 1:2000



TYPICAL PHASE 1 SECTION
SCALE: H=1:100, V=1:50

NOTES:

- FULL CLOSURE OF WAVERLEY ST FROM GRANDMONT BLVD TO RUE DES TRAPPISTES
- DETOUR ROUTE VIA RUE DES TRAPPISTES FROM PEMBINA HWY

LEGEND

- DETOUR ROUTE
- TEMPORARY LANE
- PHASE 1 (YEAR 1) - FULL CLOSURE (USE RUE DES TRAPPISTES AS DETOUR ROUTE)
- PHASE 2 (YEAR 1) - FULL CLOSURE (USE MARCHAND ROAD AS DETOUR ROUTE)
- PHASE 3 (YEAR 2) - PARTIAL CLOSURE (CONSTRUCT TEMPORARY SOUTHBOUND LANE FOR RESIDENT/BUSINESS ACCESS)



TITLE

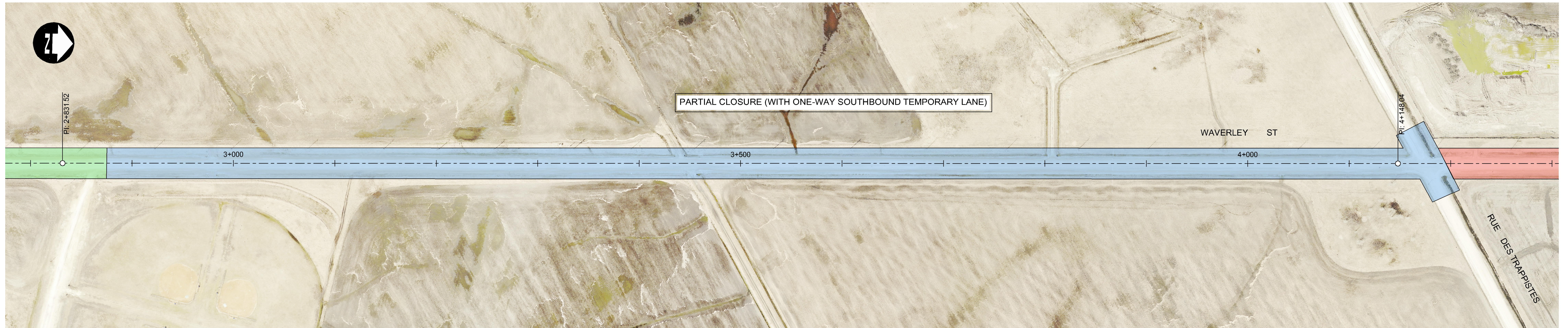
WAVERLEY STREET
CONSTRUCTION STAGING SKETCH - PHASE 1

PROJECT NO.

188859

DRAWING NO.

1



KEY MAP

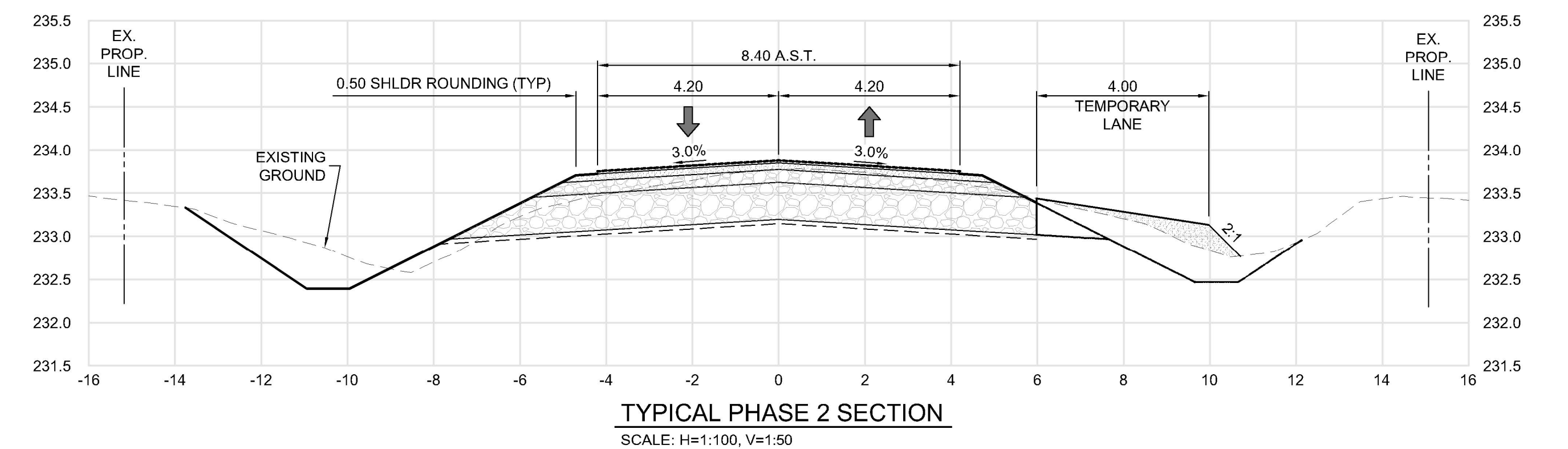


LEGEND

- DETOUR ROUTE
- TEMPORARY LANE
- PHASE 1 (YEAR 1) - FULL CLOSURE (USE RUE DES TRAPPISTES AS DETOUR ROUTE)
- PHASE 2 (YEAR 1) - FULL CLOSURE (USE MARCHAND ROAD AS DETOUR ROUTE)
- PHASE 3 (YEAR 2) - PARTIAL CLOSURE (CONSTRUCT TEMPORARY SOUTHBOUND LANE FOR RESIDENT/BUSINESS ACCESS)

PLAN - PHASE 2

SCALE: 1:2000



TYPICAL PHASE 2 SECTION
SCALE: H=1:100, V=1:50

NOTES:

- PARTIAL CLOSURE OF WAVERLEY ST BETWEEN RUE DES TRAPPISTES AND SLO-PITCH ACCESS
- CONSTRUCT TEMPORARY SOUTHBOUND LANE



TITLE

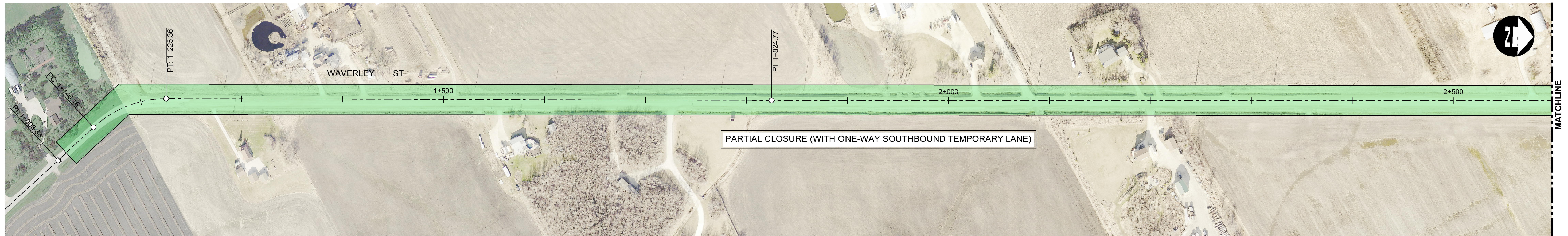
**WAVERLEY STREET
CONSTRUCTION STAGING SKETCH - PHASE 2**

PROJECT NO.

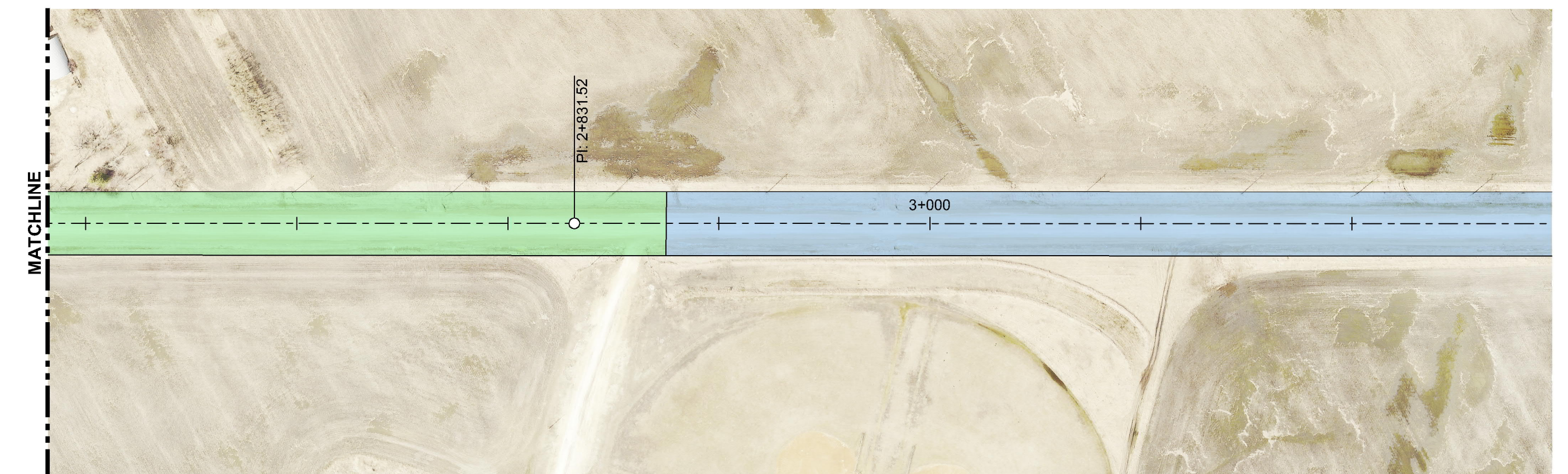
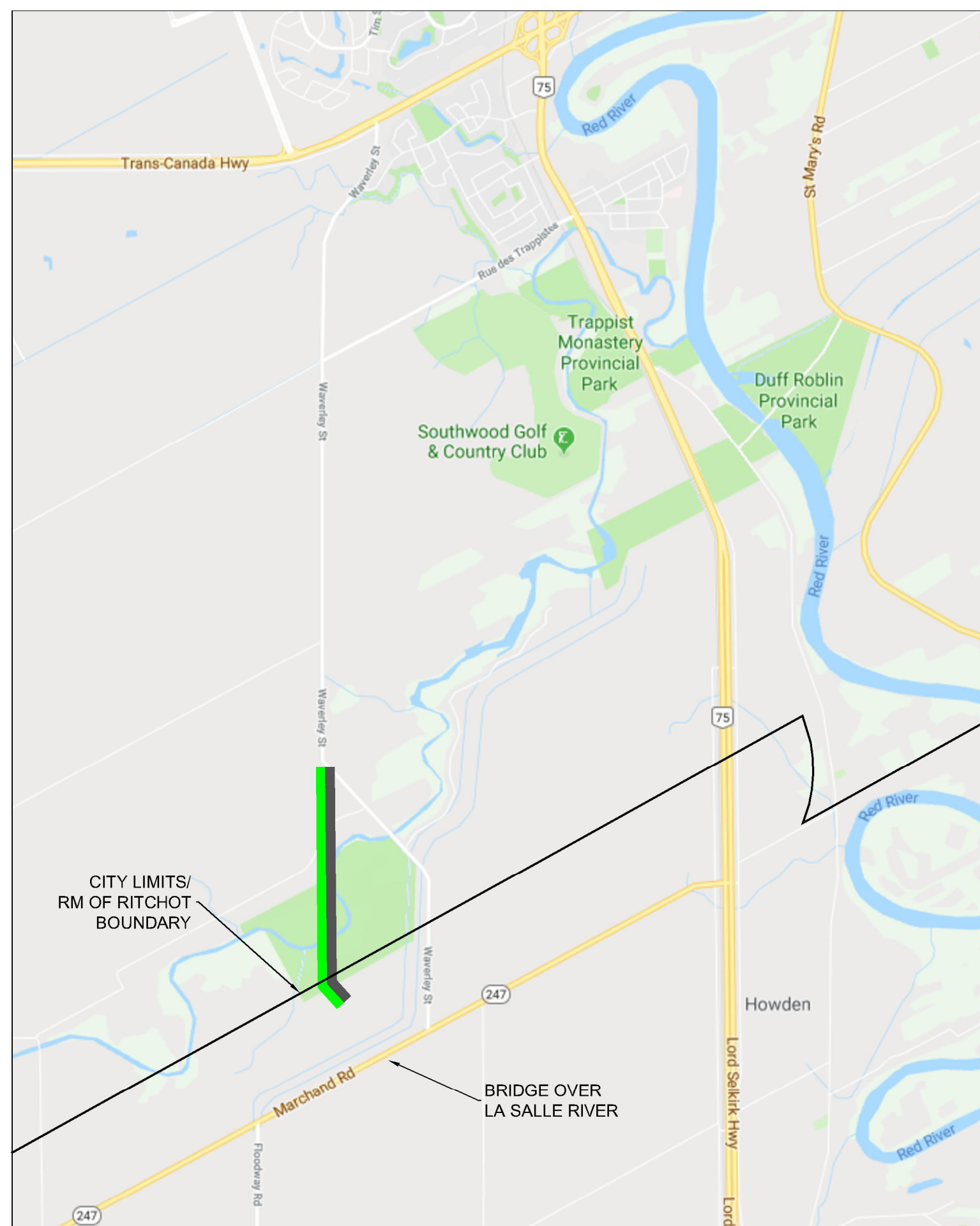
188859

DRAWING NO.

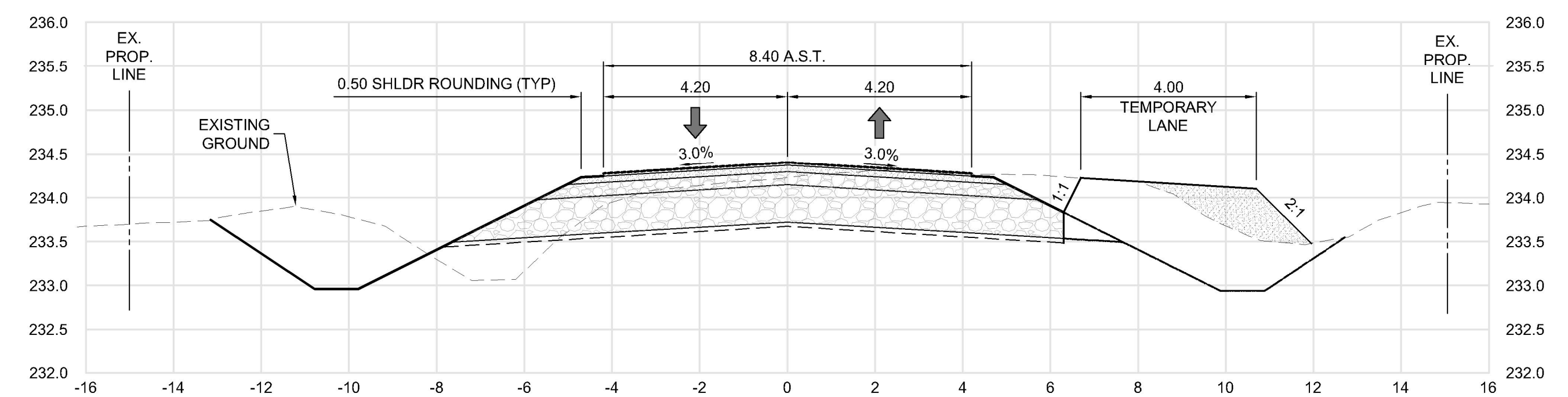
2



KEY MAP



PLAN - PHASE 3
SCALE: 1:2000



TYPICAL OPTION A - PHASE 3 SECTION
SCALE: H=1:100, V=1:50

NOTES:

- PARTIAL CLOSURE OF WAVERLEY STREET FROM SLO-PITCH ACCESS TO SOUTH CITY LIMIT
- CONSTRUCT TEMPORARY SOUTHBOUND LANE

LEGEND

- DETOUR ROUTE
- TEMPORARY LANE
- PHASE 1 (YEAR 1) - FULL CLOSURE (USE RUE DES TRAPPISTES AS DETOUR ROUTE)
- PHASE 2 (YEAR 1) - FULL CLOSURE (USE MARCHAND ROAD AS DETOUR ROUTE)
- PHASE 3 (YEAR 2) - PARTIAL CLOSURE (CONSTRUCT TEMPORARY SOUTHBOUND LANE FOR RESIDENT/BUSINESS ACCESS)



TITLE
WAVERLEY STREET
CONSTRUCTION STAGING SKETCH - PHASE 3

PROJECT NO.
188859

DRAWING NO.
3