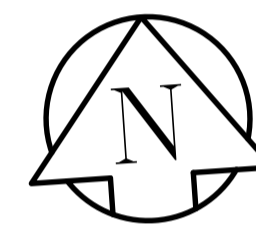
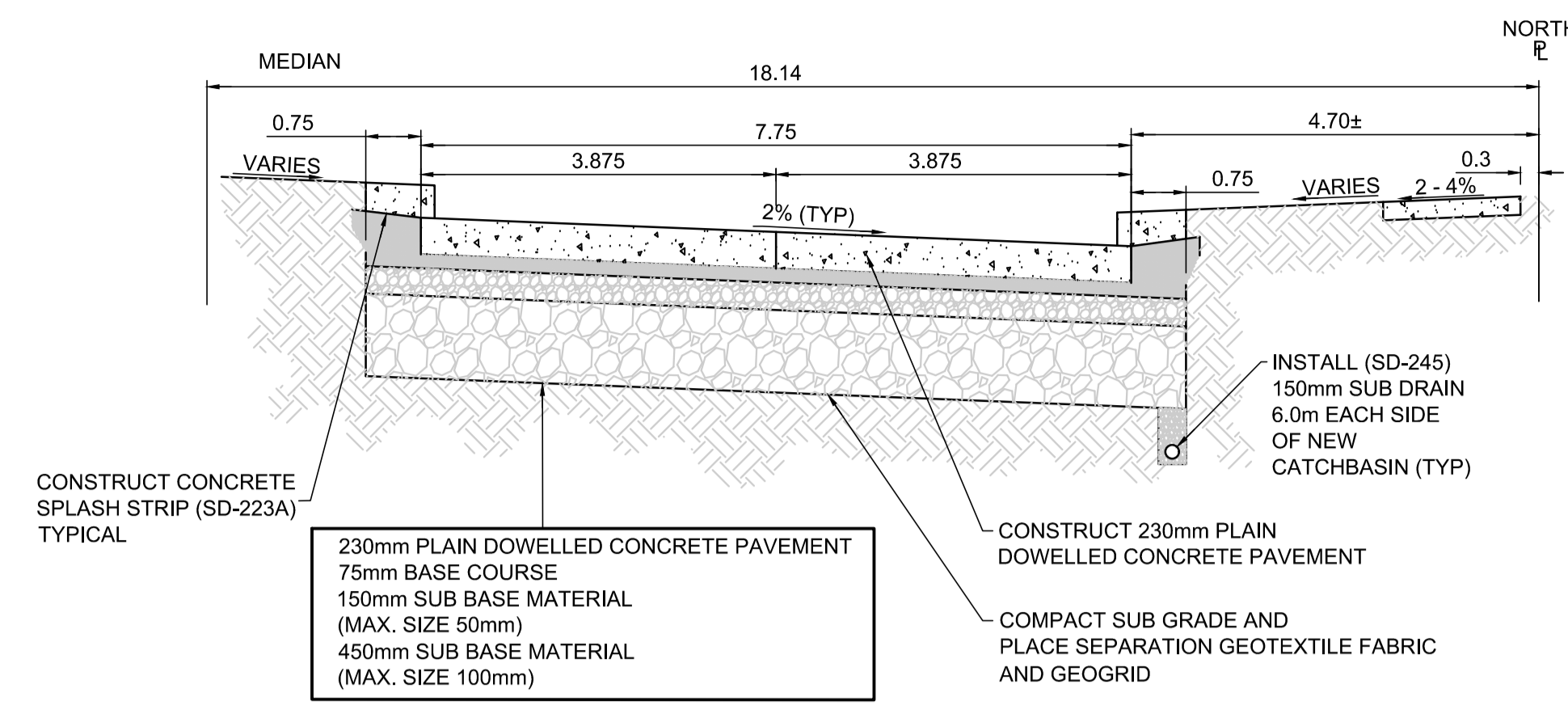


WESTBOUND PROFILE

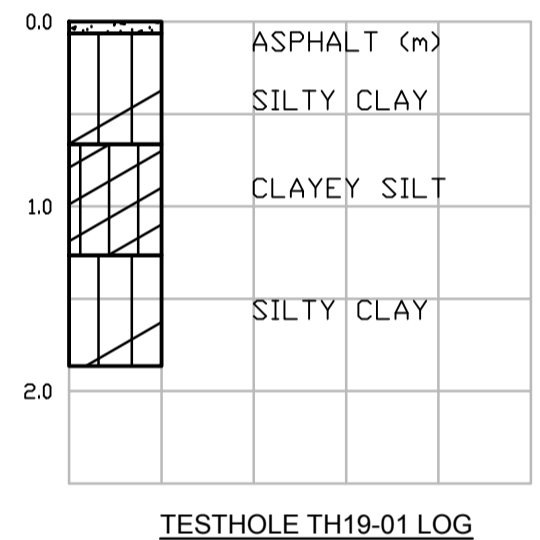


MATCHLINE STATION 0+110



TYPICAL CROSS SECTION

N.T.S.



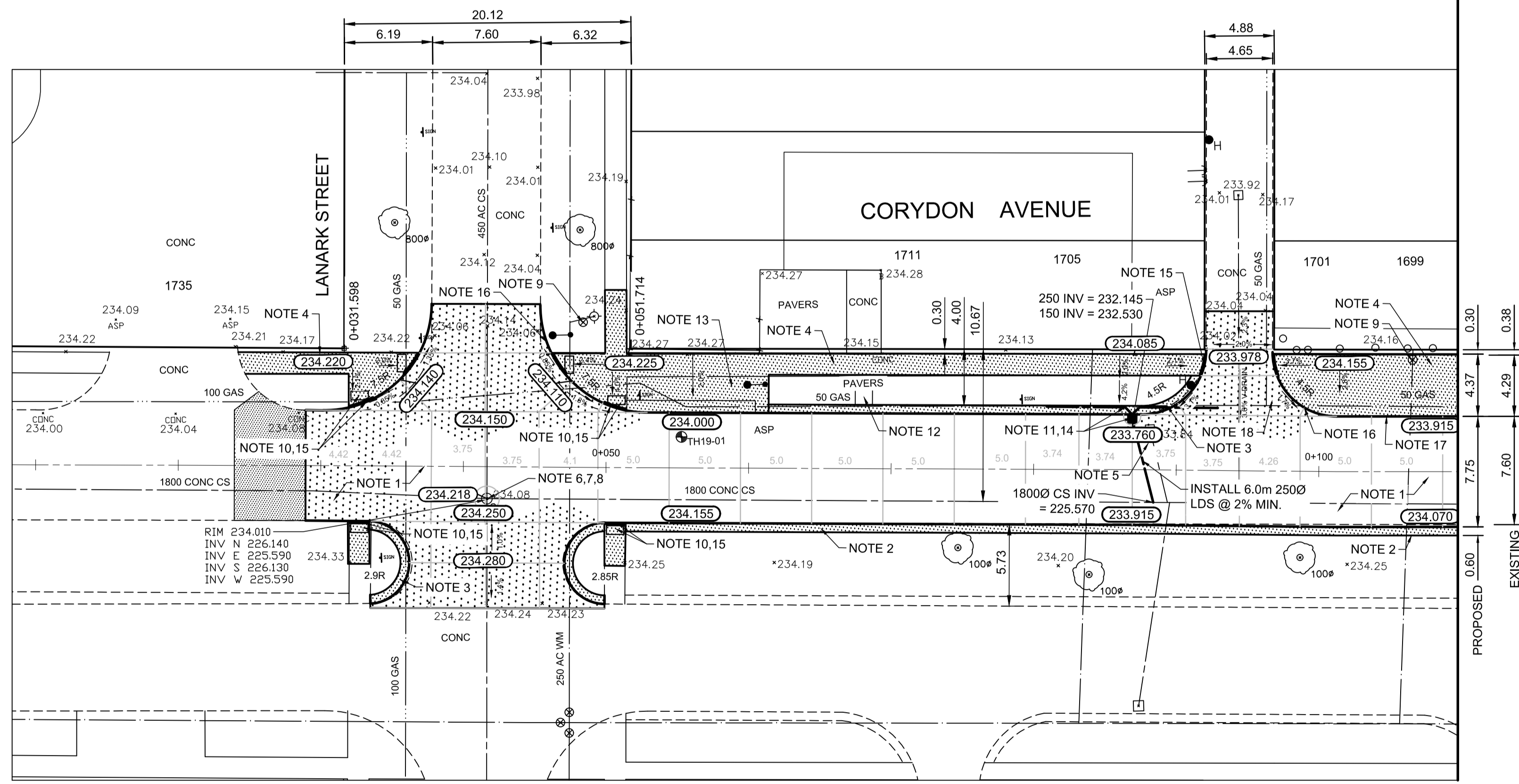
TESTHOLE TH19-01 LOG

REFERENCE NOTES:

- A. PAVEMENT DIMENSIONS ARE TO BACK OF CURB
- B. BASELINE IS CENTRE LINE ROADWAY
- C. PROPERTY LINES OBTAINED FROM CITY OF WINNIPEG L.B.I.S., AND NO SCALE FACTOR WAS APPLIED
- D. REFER TO AECOM FIELD BOOK NO. 5031

CONSTRUCTION NOTES:

1. REMOVE EXISTING PAVEMENT AND CONSTRUCT NEW 230mm PLAIN DOWELLED CONCRETE PAVEMENT
2. CONSTRUCT NEW MONOLITHIC CONCRETE SPLASH STRIP (180mm HT SEPARATE)
3. CONSTRUCT NEW MODIFIED MONOLITHIC CONCRETE SPLASH STRIP (180mm HT, SEPARATE)
4. RENEW EXISTING 100mm CONCRETE SIDEWALK
5. REMOVE EXISTING CATCHBASIN AND PLUG EXISTING LEAD
6. ADJUST EXISTING CATCH BASIN/MANHOLE TO GRADE
7. REMOVE EXISTING FRAME AND COVER AND PLACE NEW FRAME AND COVER (AP-006/AP-007)
8. INSTALL NEW CAST IRON RISER RING
9. ADJUST EXISTING WATERMAIN VALVE BOX TO GRADE
10. INSTALL NEW DETECTABLE SURFACE WARNING TILES
11. INSTALL NEW CURB AND GUTTER INLET c/w CATCHBASIN (SD-024) AND CONNECT NEW 250mm LEAD TO EXISTING 1800 CONCRETE COMBINED SEWER
12. REMOVE EXISTING PAVING STONES
13. CONSTRUCT NEW 100mm CONCRETE BUS STOP
14. INSTALL 150mm SUBDRAIN 6m ON EACH SIDE OF CATCHBASIN
15. CONSTRUCT NEW CURB RAMP (10-12mm REVEAL HT, INTEGRAL)
16. CONSTRUCT NEW MODIFIED BARRIER CURB (180mm HT, INTEGRAL)
17. CONSTRUCT NEW BARRIER CURB (180mm HT, SEPARATE)
18. REMOVE EXISTING PAVEMENT AND CONSTRUCT NEW 200mm REINFORCED CONCRETE PAVEMENT



ENGINEERS
GEOSCIENTISTS
MANITOBA

Certificate of Authorization
AECOM Canada Ltd.
No. 4671 Date: _____

PRELIMINARY
NOT FOR CONSTRUCTION

METRIC
WHOLE NUMBERS INDICATE MILLIMETRES
DECIMALIZED NUMBERS INDICATE METRES

150 mm W.M.	WATERMAIN	150 mm W.M.	HYDRO	— X —	Q PROFILE
150 mm W.M.	HYDRANT	150 mm W.M.	M.T.S.	— X —	NORTH GUTTER
300mm L.D.S.	VALVE	300mm L.D.S.	CONCRETE	— X —	NORTH MEDIAN GUTTER
300mm L.D.S.	LAND DRAINAGE SEWER	300mm L.D.S.	ASPHALT	— X —	N PROPERTY LINE
250mm W.W.S.	WASTEWATER SEWER	250mm W.W.S.	PROPERTY LINE	— X —	S PROPERTY LINE
150 mm W.M.	MANHOLE	150 mm W.M.	SURVEY BAR	— X —	
150 mm W.M.	CATCH BASIN	150 mm W.M.	ELEVATION	— X —	
150 mm W.M.	CATCH PIT	150 mm W.M.	TREE	— X —	
150 mm W.M.	JUNCTIONS	150 mm W.M.	SIDEWALK RAMP	— X —	
150 mm W.M.	CULVERT	150 mm W.M.	CONCRETE SIDEWALK	— X —	
150 mm W.M.	GAS	150 mm W.M.	FENCE	— X —	
EXISTING	LEGEND - PLAN	PROPOSED	EXISTING	LEGEND - PROFILE	PROPOSED

LOCATION APPROVED UNDERGROUND STRUCTURES

SUPV. U/G STRUCTURES COMMITTEE DATE _____

NOTE:
LOCATION OF UNDERGROUND STRUCTURES AS SHOWN ARE BASED ON THE BEST INFORMATION AVAILABLE. BUT NO GUARANTEE IS GIVEN THAT ALL EXISTING UTILITIES ARE SHOWN OR THAT THE GIVEN LOCATIONS ARE EXACT. CONFIRMATION OF EXISTENCE AND EXACT LOCATION OF ALL SERVICES MUST BE OBTAINED FROM THE INDIVIDUAL UTILITIES BEFORE PROCEEDING WITH CONSTRUCTION.

B.M. 23 - N.W. COR. JOHN BREBUIF & RENFEW ST., ELEV. TBTL. IN E. CONC. FOUNDATION OF NO.1707 ST. JOHN BREBUIF SCHOOL, 1.5m N. & 0.2m BELOW BRICK OF S.E. COR. OF SCHOOL. ELEVATION: 233.864

1	ADDENDUM No. 1	05/03/2019	RC
0	ISSUED FOR TENDER	04/24/2019	JT
A	ISSUED FOR REVIEW	04/09/2019	JT
NO.	REVISIONS	DATE	BY

AECOM

DESIGNED BY: JT
CHECKED BY: RC/KWR
DRAWN BY: JT
APPROVED BY: _____
HOR. SCALE: 1:250
VERTICAL: 1:10
ORIGINAL SIGNED BY: _____
DATE: 04/09/2019
DATE: TBD

ENGINEER'S SEAL

PROVINCE OF MANITOBA
REGISTERED PROFESSIONAL ENGINEER
R. T. CUNNINGHAM
Member 24711

CONSULTANT DRAWING NO. CT-01

THE CITY OF WINNIPEG
PUBLIC WORKS DEPARTMENT
ENGINEERING DIVISION

2019 REGIONAL STREET RENEWAL PROGRAM

CORYDON AVENUE WESTBOUND - LANARK STREET TO CORDOVA STREET
CONCRETE PAVEMENT RECONSTRUCTION
LANARK STREET TO STATION 0+110

CITY DRAWING NUMBER P-3507-01
SHEET 01 OF 08