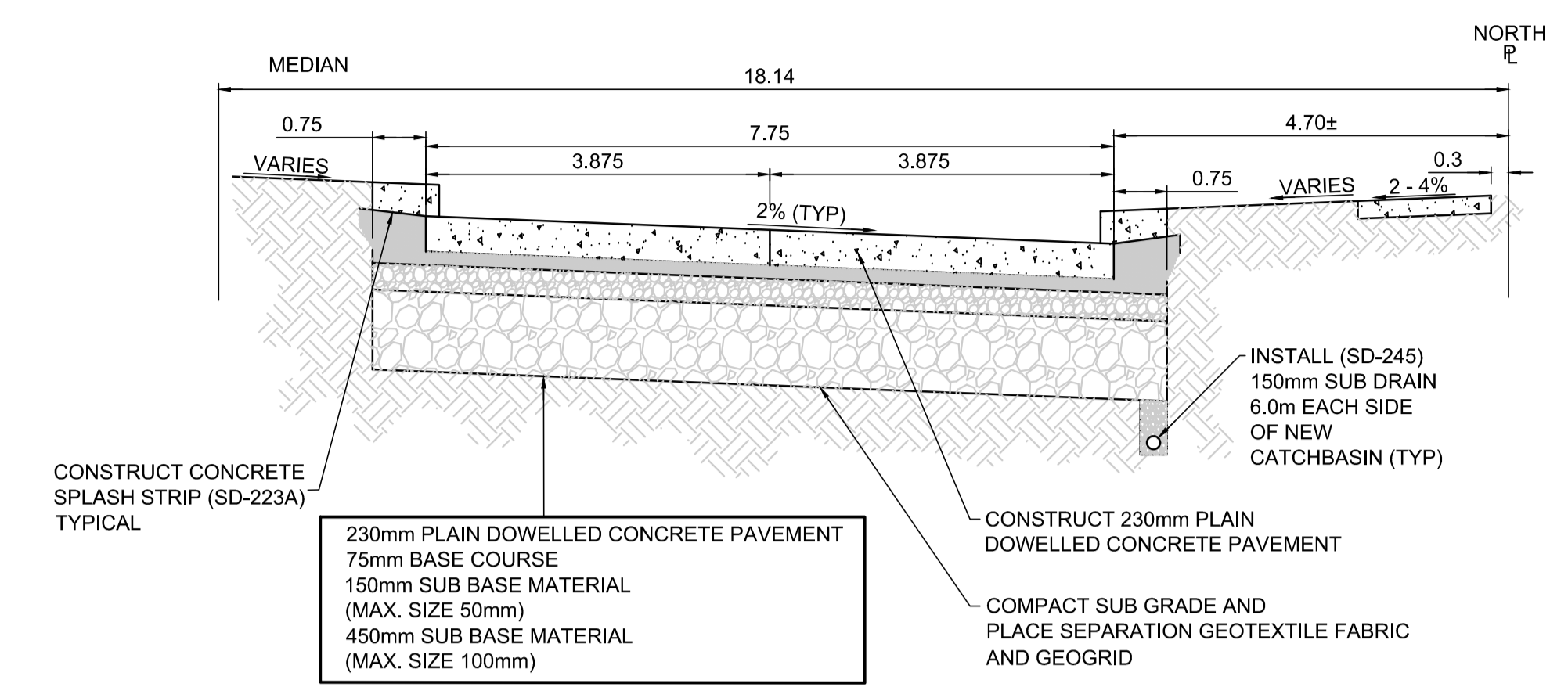
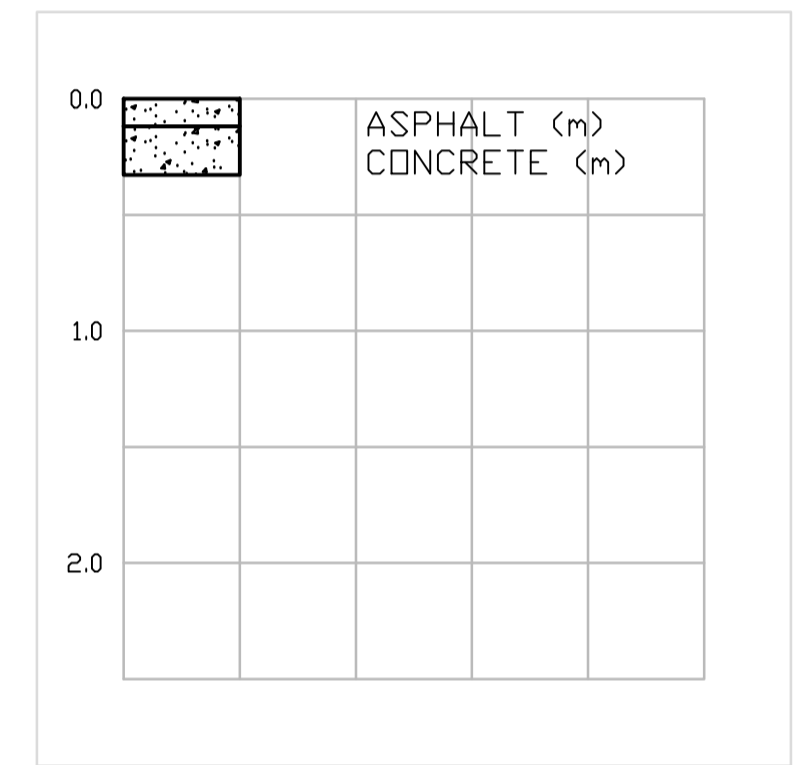


WESTBOUND PROFILE



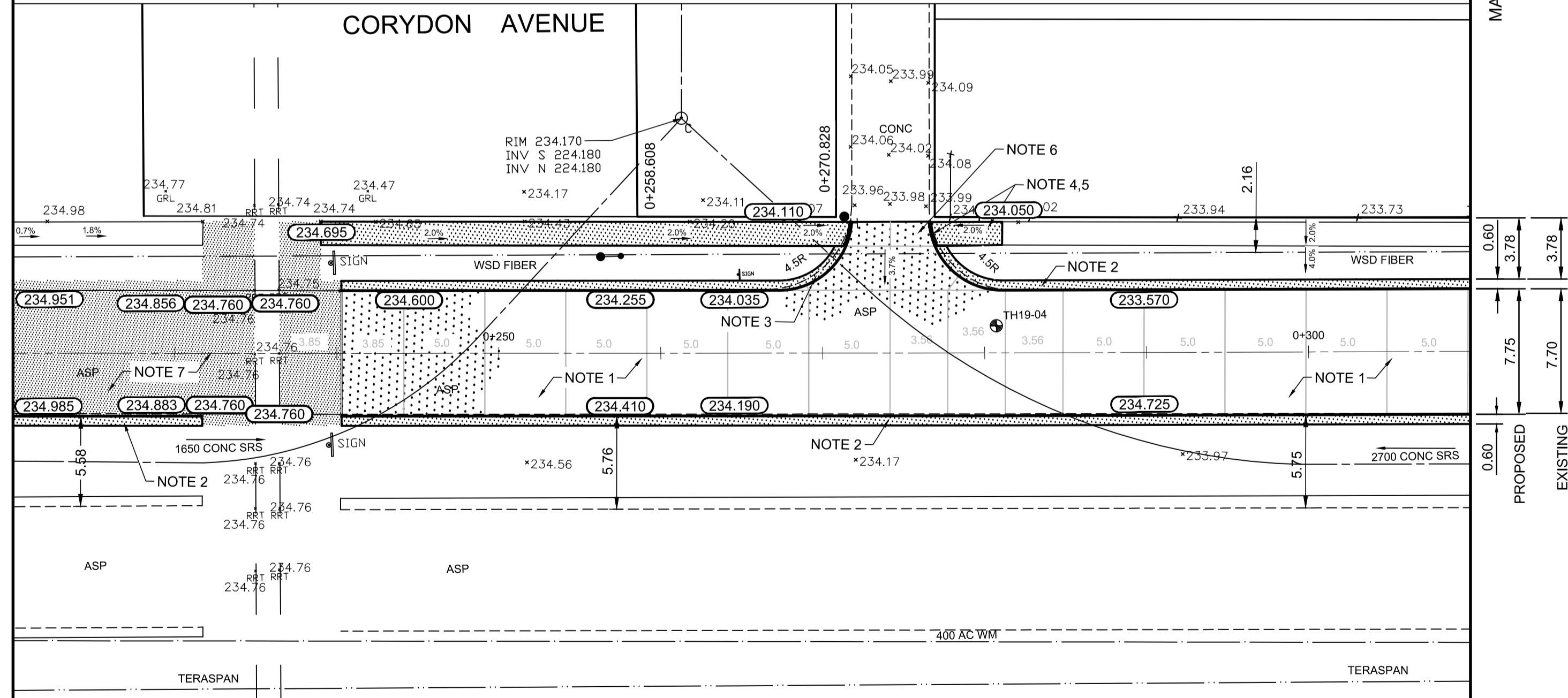
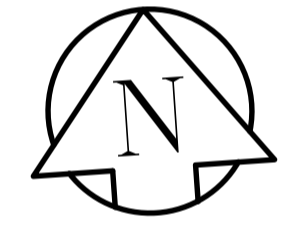
TYPICAL CROSS SECTION
N.T.S.



TESTHOLE TP19-04 LOG

MATCHLINE STATION 0+220

MATCHLINE STATION 0+310



REFERENCE NOTES:

- A. PAVEMENT DIMENSIONS ARE TO BACK OF CURB
- B. BASELINE IS CENTRE LINE ROADWAY
- C. PROPERTY LINES OBTAINED FROM CITY OF WINNIPEG L.B.I.S., AND NO SCALE FACTOR WAS APPLIED
- D. REFER TO AECOM FIELD BOOK NO. 5031

CONSTRUCTION NOTES:

- 1. REMOVE EXISTING PAVEMENT AND CONSTRUCT NEW 230mm PLAIN DOWELLED CONCRETE PAVEMENT
- 2. CONSTRUCT NEW MONOLITHIC CONCRETE SPLASH STRIP (180mm HT SEPARATE)
- 3. CONSTRUCT NEW MODIFIED MONOLITHIC CONCRETE SPLASH STRIP (180mm HT, INTEGRAL)
- 4. RENEW EXISTING 100mm CONCRETE SIDEWALK
- 5. CONSTRUCT NEW CURB RAMP (10-12mm REVEAL HT. INTEGRAL)
- 6. REMOVE EXISTING PAVEMENT AND CONSTRUCT NEW 200mm REINFORCED CONCRETE PAVEMENT
- 7. MILL AND PLACE NEW TYPE 1A ASPHALT PAVEMENT

ENGINEERS GEOSCIENTISTS MANITOBA
 Certificate of Authorization
 AECOM Canada Ltd.
 No. 4671 Date: _____

PRELIMINARY
NOT FOR CONSTRUCTION

METRIC
 WHOLE NUMBERS INDICATE MILLIMETRES
 DECIMALIZED NUMBERS INDICATE METRES

150 mm W.M.	WATERMAIN	150 mm W.M.	HYDRO	— x —	PROFILE
300mm L.D.S.	LAND DRAINAGE SEWER	300mm L.D.S.	CONCRETE	— □ —	NORTH GUTTER
250mm W.W.S.	WASTEWATER SEWER	250mm W.W.S.	ASPHALT	— ◇ —	NORTH MEDIAN GUTTER
○	MANHOLE	○	PROPERTY LINE	— ○ —	N PROPERTY LINE
□	CATCH BASIN	□	SURVEY BAR	— ○ —	S PROPERTY LINE
▽	CATCH PIT	▽	ELEVATION	— ○ —	
+	JUNCTIONS	+	TREE	— ○ —	
—	CULVERT	—	SIDEWALK RAMP	—	
—	GAS	—	CONCRETE SIDEWALK	—	
—	EXISTING	—	FENCE	—	
—	LEGEND - PLAN	—	LEGEND - PLAN	—	LEGEND - PROFILE
—	PROPOSED	—	PROPOSED	—	PROPOSED

LOCATION APPROVED UNDERGROUND STRUCTURES
 SUPV. U/G STRUCTURES COMMITTEE DATE _____
 NOTE:
 LOCATION OF UNDERGROUND STRUCTURES AS SHOWN ARE BASED ON THE BEST INFORMATION AVAILABLE. BUT NO GUARANTEE IS GIVEN THAT ALL EXISTING UTILITIES ARE SHOWN OR THAT THE GIVEN LOCATIONS ARE EXACT. CONFIRMATION OF EXISTENCE AND EXACT LOCATION OF ALL SERVICES MUST BE OBTAINED FROM THE INDIVIDUAL UTILITIES BEFORE PROCEEDING WITH CONSTRUCTION.

B.M. 23 - N.W. COR. JOHN BREBUF & RENFEW ST., ELEV. TBLT. IN E. CONC. FOUNDATION OF NO.1707 ST. JOHN BREBUF SCHOOL, 1.5m N. & 0.2m BELOW BRICK OF S.E. COR. OF SCHOOL. ELEVATION: 233.864

1	ADDENDUM No. 1	05/03/2019	RC
0	ISSUED FOR TENDER	04/24/2019	JT
A	ISSUED FOR REVIEW	04/09/2019	JT
NO.	REVISIONS	DATE	BY

AECOM

DESIGNED BY	JT	CHECKED BY	RC/KWR
DRAWN BY	JT	APPROVED BY	
HOR. SCALE:	1:250	ORIGINAL SIGNED BY:	
VERTICAL:	1:10		
DATE	04/09/2019	DATE	

ENGINEER'S SEAL
 R. T. CUNNINGHAM
 Member
 24711
 REGISTERED PROFESSIONAL ENGINEER

THE CITY OF WINNIPEG
 PUBLIC WORKS DEPARTMENT
 ENGINEERING DIVISION

2019 REGIONAL STREET RENEWAL PROGRAM

CORYDON AVENUE WESTBOUND - LANARK STREET TO CORDVOA STREET
 CONCRETE PAVEMENT RECONSTRUCTION
 STATION 0+220 TO STATION 0+310

CITY DRAWING NUMBER P-3507-03
 SHEET 03 OF 08