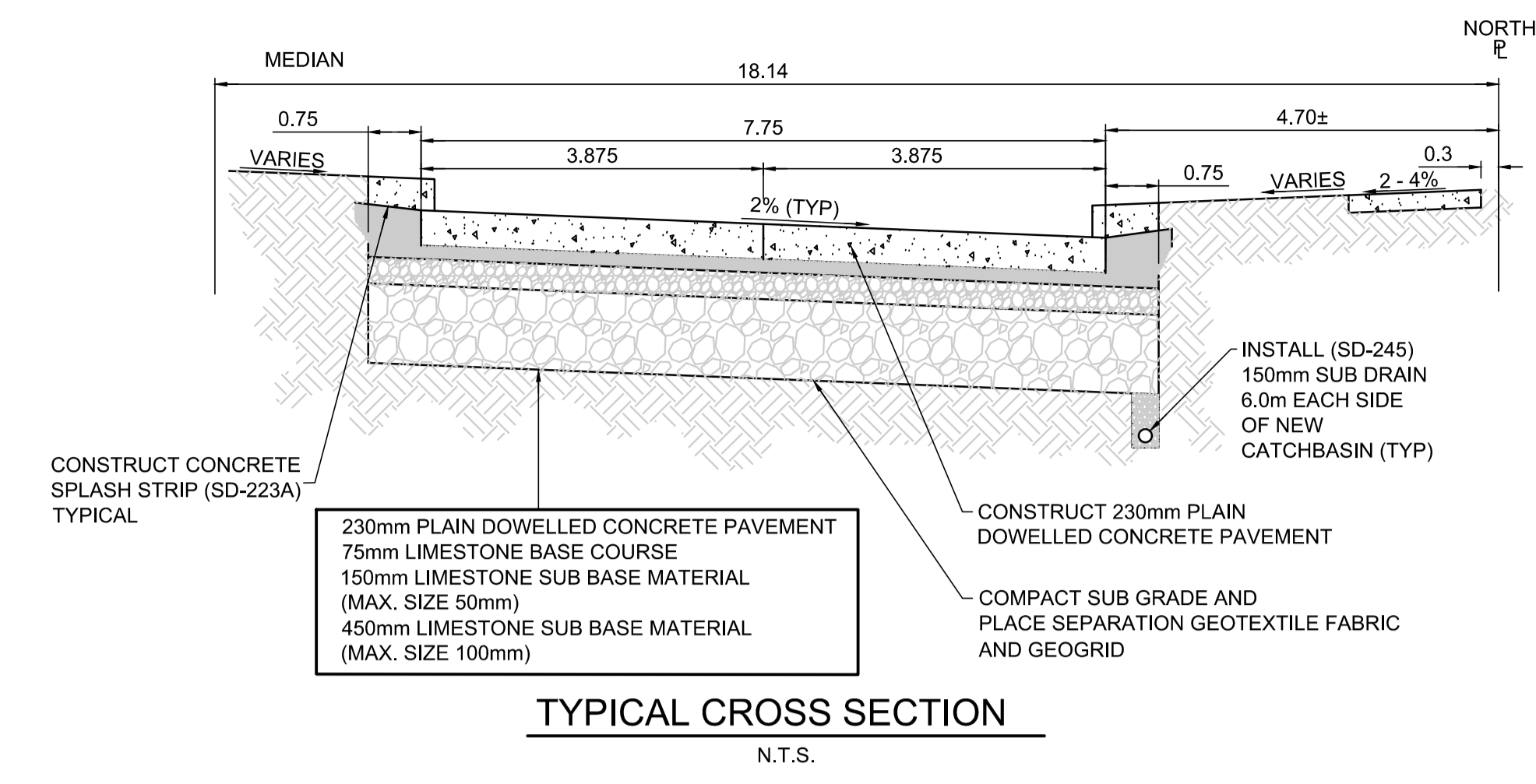
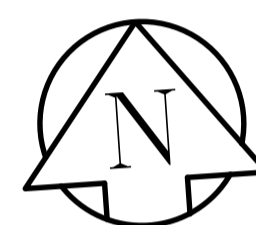


WESTBOUND PROFILE

MATCHLINE STATION 0+110



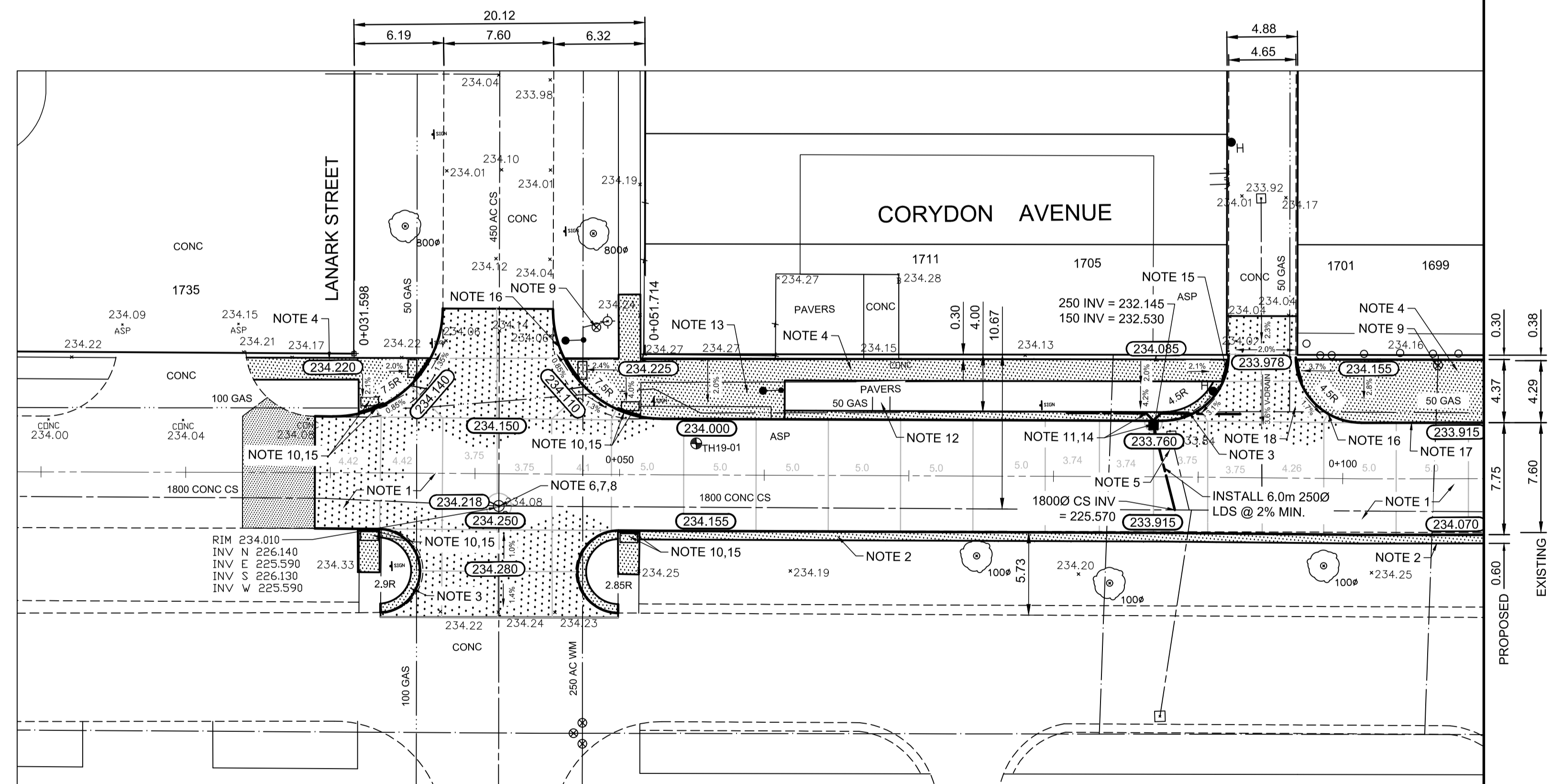
TYPICAL CROSS SECTION
N.T.S.

REFERENCE NOTES:

- A. PAVEMENT DIMENSIONS ARE TO BACK OF CURB
- B. BASELINE IS CENTRE LINE ROADWAY
- C. PROPERTY LINES OBTAINED FROM CITY OF WINNIPEG L.B.I.S., AND NO SCALE FACTOR WAS APPLIED
- D. REFER TO AECOM FIELD BOOK NO. 5031

CONSTRUCTION NOTES:

1. REMOVE EXISTING PAVEMENT AND CONSTRUCT NEW 230mm PLAIN DOWELLED CONCRETE PAVEMENT
2. CONSTRUCT NEW MONOLITHIC CONCRETE SPLASH STRIP (180mm HT SEPARATE)
3. CONSTRUCT NEW MODIFIED MONOLITHIC CONCRETE SPLASH STRIP (180mm HT, SEPARATE)
4. RENEW EXISTING 100mm CONCRETE SIDEWALK
5. REMOVE EXISTING CATCHBASIN AND PLUG EXISTING LEAD
6. ADJUST EXISTING CATCH BASIN/MANHOLE TO GRADE
7. REMOVE EXISTING FRAME AND COVER AND PLACE NEW FRAME AND COVER (AP-006/AP-007)
8. INSTALL NEW CAST IRON RISER RING
9. ADJUST EXISTING WATERMAIN VALVE BOX TO GRADE
10. INSTALL NEW DETECTABLE SURFACE WARNING TILES
11. INSTALL NEW CURB AND GUTTER INLET c/w CATCHBASIN (SD-024) AND CONNECT NEW 250mm LEAD TO EXISTING 1800 CONCRETE COMBINED SEWER (AP-006/AP-007)
12. REMOVE EXISTING PAVING STONES
13. CONSTRUCT NEW 100mm CONCRETE BUS STOP
14. INSTALL 150mm SUBDRAIN 6m ON EACH SIDE OF CATCHBASIN
15. CONSTRUCT NEW CURB RAMP (10-12mm REVEAL HT. INTEGRAL)
16. CONSTRUCT NEW MODIFIED BARRIER CURB (180mm HT. INTEGRAL)
17. CONSTRUCT NEW BARRIER CURB (180mm HT. SEPARATE)
18. REMOVE EXISTING PAVEMENT AND CONSTRUCT NEW 200mm REINFORCED CONCRETE PAVEMENT



**ENGINEERS
GEOLOGISTS
MANITOBA**
Certificate of Authorization
AECOM Canada Ltd.
No. 4671 Date: _____

**PRELIMINARY
NOT FOR CONSTRUCTION**

METRIC
WHOLE NUMBERS INDICATE MILLIMETRES
DECIMALIZED NUMBERS INDICATE METRES

EXISTING	LEGEND - PLAN	PROPOSED	EXISTING	LEGEND - PLAN	PROPOSED	EXISTING	LEGEND - PROFILE	PROPOSED
	WATERMAIN			HYDRO M.T.S.			PROFILE	
	VALVE			CONCRETE				
	LAND DRAINAGE SEWER			ASPHALT				
	WASTEWATER SEWER			PROPERTY LINE				
	MANHOLE			SURVEY BAR				
	CATCH BASIN			ELEVATION (235.750)				
	CATCH PIT			TREE				
	JUNCTIONS			SIDEWALK RAMP				
	CULVERT			CONCRETE SIDEWALK				
	GAS			FENCE				

LOCATION APPROVED UNDERGROUND STRUCTURES

SUPV. U/G STRUCTURES COMMITTEE DATE _____

NOTE:
LOCATION OF UNDERGROUND STRUCTURES AS SHOWN ARE BASED ON THE BEST INFORMATION AVAILABLE. BUT NO GUARANTEE IS GIVEN THAT ALL EXISTING UTILITIES ARE SHOWN OR THAT THE GIVEN LOCATIONS ARE EXACT. CONFIRMATION OF EXISTENCE AND EXACT LOCATION OF ALL SERVICES MUST BE OBTAINED FROM THE INDIVIDUAL UTILITIES BEFORE PROCEEDING WITH CONSTRUCTION.

B.M. ELEV.	23 - N.W. COR. JOHN BREBUIF & RENFEW ST. TBLT. IN E. CONC. FOUNDATION OF NO.1707 ST. JOHN BREBUIF SCHOOL. 1.5m N. & 0.2m BELOW BRICK OF S.E. COR. OF SCHOOL. ELEVATION: 233.864
DESIGNED BY	JT
CHECKED BY	RC/KWR
DRAWN BY	JT
APPROVED BY	
HOR. SCALE:	1:250
VERTICAL:	1:10
ORIGINAL SIGNED BY:	TBD
DATE	04/09/2019
DATE	TBD

ENGINEER'S SEAL
PROVINCE OF MANITOBA
R. T. CUNNINGHAM
Member
24711
REGISTERED PROFESSIONAL ENGINEER

THE CITY OF WINNIPEG
PUBLIC WORKS DEPARTMENT
ENGINEERING DIVISION

2019 REGIONAL STREET RENEWAL PROGRAM

CORYDON AVENUE WESTBOUND - LANARK STREET TO CORDOVA STREET
CONCRETE PAVEMENT RECONSTRUCTION
LANARK STREET TO STATION 0+110

CITY DRAWING NUMBER P-3507-01
SHEET 01 OF 08

CONSULTANT DRAWING NO. CT-01