

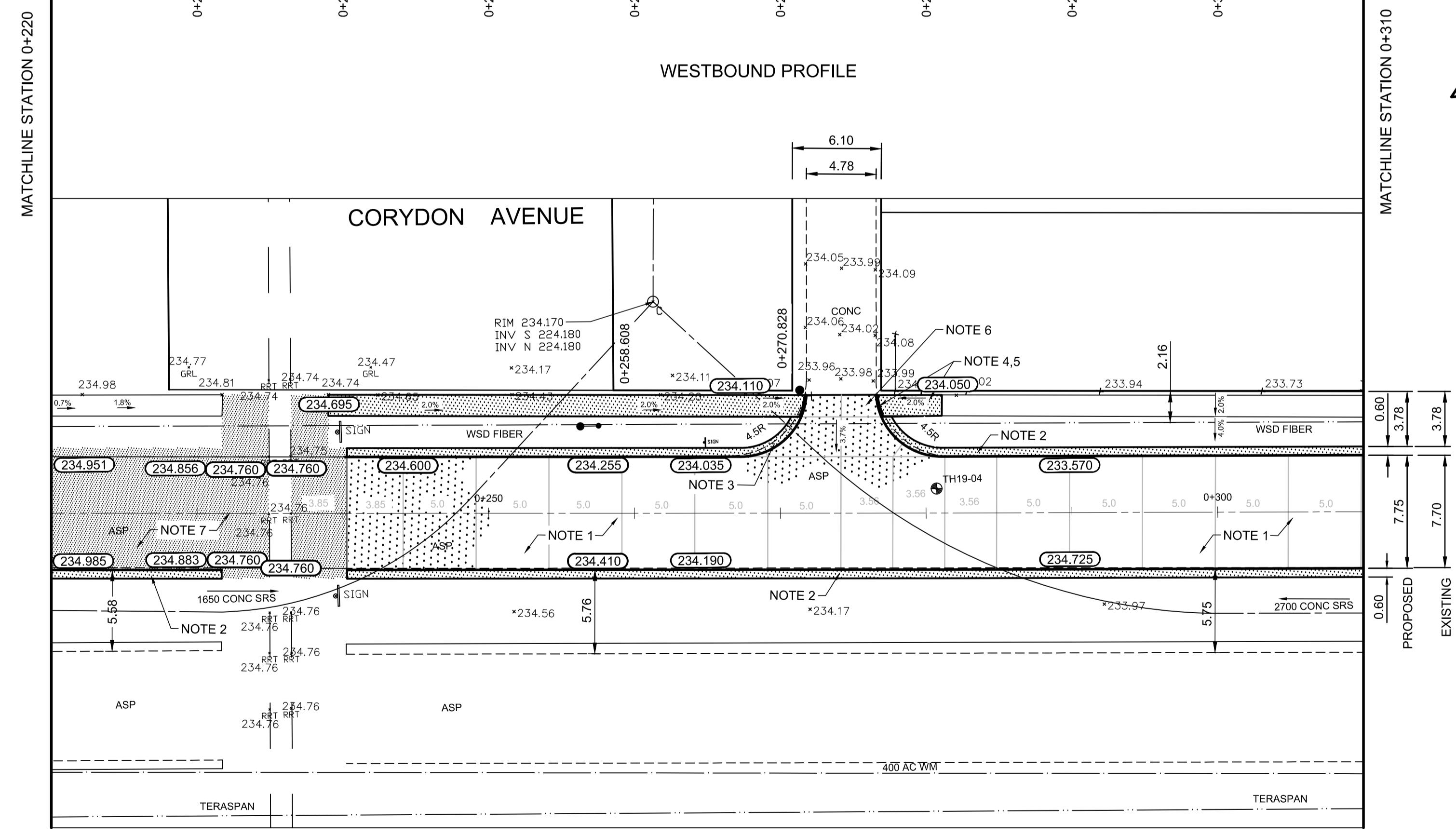
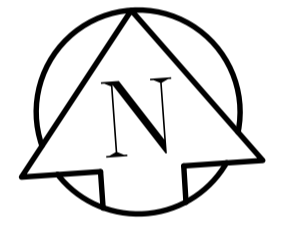
TYPICAL CROSS SECTION
N.T.S.

REFERENCE NOTES:

- A. PAVEMENT DIMENSIONS ARE TO BACK OF CURB
- B. BASELINE IS CENTRE LINE ROADWAY
- C. PROPERTY LINES OBTAINED FROM CITY OF WINNIPEG L.B.I.S., AND NO SCALE FACTOR WAS APPLIED
- D. REFER TO AECOM FIELD BOOK NO. 5031

CONSTRUCTION NOTES:

1. REMOVE EXISTING PAVEMENT AND CONSTRUCT NEW 230mm PLAIN DOWELLED CONCRETE PAVEMENT
2. CONSTRUCT NEW MONOLITHIC CONCRETE SPLASH STRIP (180mm HT SEPARATE)
3. CONSTRUCT NEW MODIFIED MONOLITHIC CONCRETE SPLASH STRIP (180mm HT, INTEGRAL)
4. RENEW EXISTING 100mm CONCRETE SIDEWALK
5. CONSTRUCT NEW CURB RAMP (10-12mm REVEAL HT, INTEGRAL)
6. REMOVE EXISTING PAVEMENT AND CONSTRUCT NEW 200mm REINFORCED CONCRETE PAVEMENT
7. MILL AND PLACE NEW TYPE 1A ASPHALT PAVEMENT



**ENGINEERS
GEOSCIENTISTS
MANITOBA**
Certificate of Authorization
AECOM Canada Ltd.
No. 4671 Date: _____

**PRELIMINARY
NOT FOR CONSTRUCTION**

METRIC
WHOLE NUMBERS INDICATE MILLIMETRES
DECIMALIZED NUMBERS INDICATE METRES

EXISTING	LEGEND - PLAN	PROPOSED	EXISTING	LEGEND - PLAN	PROPOSED	EXISTING	LEGEND - PROFILE	PROPOSED
	WATERMAIN HYDRANT			HYDRO M.T.S.			NORTH GUTTER	
	LAND DRAINAGE SEWER			ASPHALT			N PROPERTY LINE	
	MANHOLE			SURVEY BAR			ELEVATION (235.750)	
	CATCH PIT			SIDEWALK RAMP			CONCRETE SIDEWALK FENCE	
	CULVERT GAS							

LOCATION APPROVED UNDERGROUND STRUCTURES

SUPV. U/G STRUCTURES COMMITTEE DATE _____

NOTE:
LOCATION OF UNDERGROUND STRUCTURES AS SHOWN ARE BASED ON THE BEST INFORMATION AVAILABLE. BUT NO GUARANTEE IS GIVEN THAT ALL EXISTING UTILITIES ARE SHOWN OR THAT THE GIVEN LOCATIONS ARE EXACT. CONFIRMATION OF EXISTENCE AND EXACT LOCATION OF ALL SERVICES MUST BE OBTAINED FROM THE INDIVIDUAL UTILITIES BEFORE PROCEEDING WITH CONSTRUCTION.

NO.	REVISIONS	DATE	BY
0	ISSUED FOR TENDER	04/24/2019	JT
A	ISSUED FOR REVIEW	04/09/2019	JT

B.M. 23 - N.W. COR. JOHN BREBUF & RENFEW ST., ELEV. IN E. CONC. FOUNDATION OF NO.1707 ST. JOHN BREBUF SCHOOL, 1.5m N. & 0.2m BELOW BRICK OF S.E. COR. OF SCHOOL. ELEVATION: 233.864

DESIGNED BY	CHECKED BY
JT	RC/KWR

DRAWN BY	APPROVED BY
JT	

HOR. SCALE: 1:250
VERTICAL: 1:10

ORIGINAL SIGNED BY: _____

DATE: 04/09/2019

ENGINEER'S SEAL
R. T. CUNNINGHAM
Member 24711
REGISTERED PROFESSIONAL ENGINEER

THE CITY OF WINNIPEG
PUBLIC WORKS DEPARTMENT
ENGINEERING DIVISION

2019 REGIONAL STREET RENEWAL PROGRAM

CORYDON AVENUE WESTBOUND - LANARK STREET TO CORDVOA STREET
CONCRETE PAVEMENT RECONSTRUCTION
STATION 0+220 TO STATION 0+310

CITY DRAWING NUMBER P-3507-03
SHEET 03 OF 08

CONSULTANT DRAWING NO. CT-03