

REFERENCE NOTES:

- A. PAVEMENT DIMENSIONS ARE TO BACK OF CURB
- B. BASELINE IS CENTRE LINE ROADWAY
- C. PROPERTY LINES OBTAINED FROM CITY OF WINNIPEG L.B.I.S., AND NO SCALE FACTOR WAS APPLIED
- D. REFER TO AECOM FIELD BOOK NO. 5031

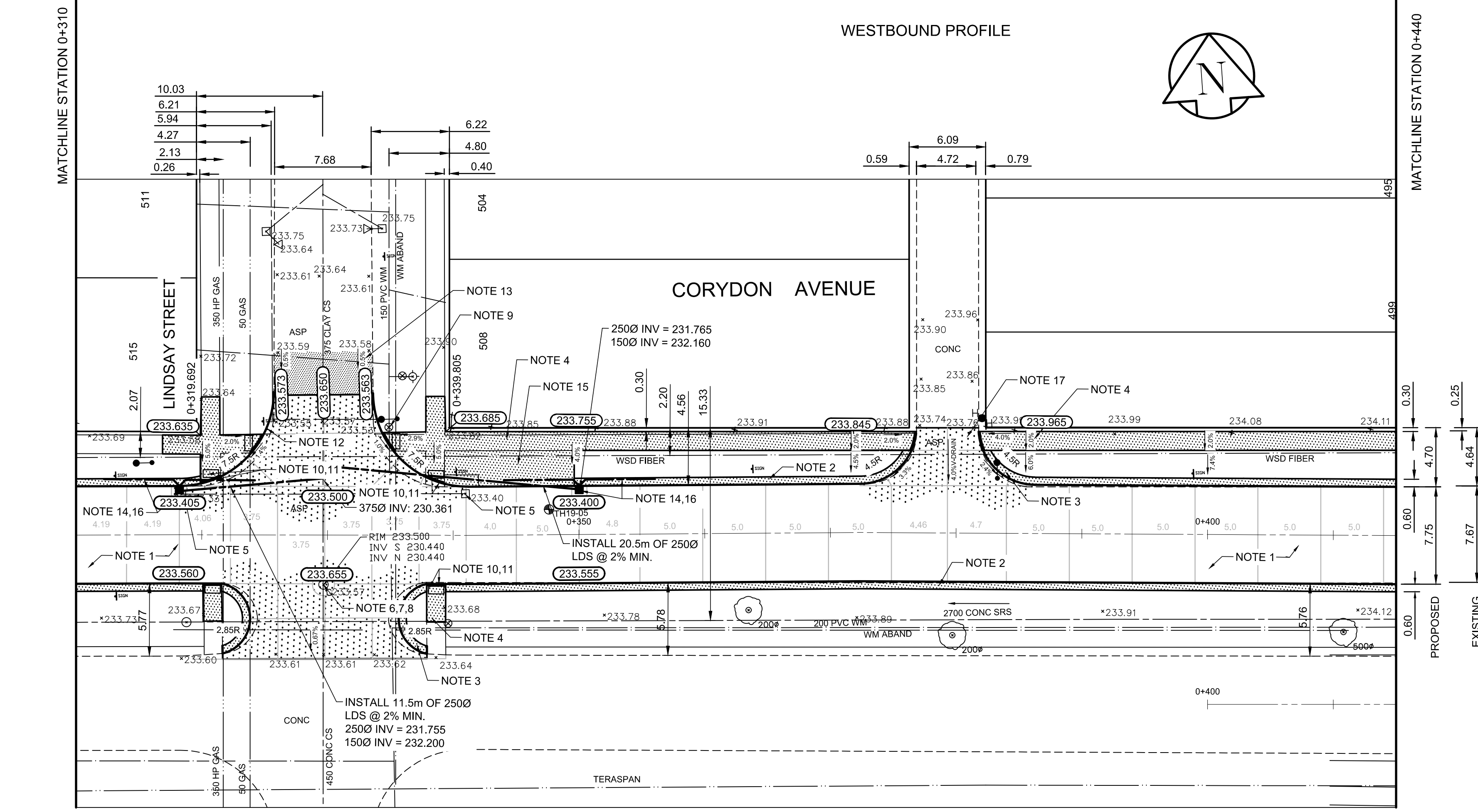
CONSTRUCTION NOTES:

1. REMOVE EXISTING PAVEMENT AND CONSTRUCT NEW 230mm PLAIN DOWELLED CONCRETE PAVEMENT
2. CONSTRUCT NEW MONOLITHIC CONCRETE SPLASH STRIP (180mm HT SEPARATE)
3. CONSTRUCT NEW MODIFIED MONOLITHIC CONCRETE SPLASH STRIP (180mm HT, INTEGRAL)
4. RENEW EXISTING 100mm CONCRETE SIDEWALK
5. REMOVE EXISTING CATCHBASIN/CATCHPIT AND PLUG EXISTING LEAD
6. ADJUST EXISTING CATCH BASIN/MANHOLE TO GRADE
7. REMOVE EXISTING FRAME AND COVER AND PLACE NEW FRAME AND COVER (AP-006/AP-007)
8. INSTALL NEW CAST IRON RISER RING
9. ADJUST EXISTING WATERMAIN VALVE BOX TO GRADE
10. INSTALL NEW DETECTABLE SURFACE WARNING TILES
11. CONSTRUCT NEW CURB RAMP (10-12mm REVEAL HT. INTEGRAL)
12. CONSTRUCT NEW MODIFIED BARRIER CURB (180mm HT. INTEGRAL)
13. MILL AND PLACE NEW TYPE 1A ASPHALT PAVEMENT
14. INSTALL NEW CATCHBASIN (SD-024) AND CONNECT NEW 250mm LEAD TO EXISTING 375 CLAY COMBINED SEWER
15. CONSTRUCT NEW 100mm CONCRETE BUSPAD
16. INSTALL 150mm SUBDRAIN 6m ON EACH SIDE OF CATCHBASIN
17. REMOVE EXISTING PAVEMENT AND CONSTRUCT NEW 200mm REINFORCED CONCRETE PAVEMENT

**ENGINEERS
GEOSCIENTISTS
MANITOBA**
Certificate of Authorization
AECOM Canada Ltd.
No. 4671 Date: _____

**PRELIMINARY
NOT FOR CONSTRUCTION**

METRIC
WHOLE NUMBERS INDICATE MILLIMETRES
DECIMALIZED NUMBERS INDICATE METRES



EXISTING	LEGEND - PLAN	PROPOSED	EXISTING	LEGEND - PLAN	PROPOSED	EXISTING	LEGEND - PROFILE	PROPOSED
150 mm W.M.	WATERMAIN	150 mm W.M.	HYDRO	M.T.S.	---	---	Q PROFILE	---
Valve symbol	VALVE	Valve symbol	CONCRETE	CONCRETE	---	---	NORTH GUTTER	---
300mm L.D.S.	LAND DRAINAGE SEWER	300mm L.D.S.	ASPHALT	ASPHALT	---	---	NORTH MEDIAN GUTTER	---
250mm W.W.S.	WASTEWATER SEWER	250mm W.W.S.	PROPERTY LINE	PROPERTY LINE	---	---	N PROPERTY LINE	---
Manhole symbol	MANHOLE	Manhole symbol	SURVEY BAR	SURVEY BAR	---	---		
Catch basin symbol	CATCH BASIN	Catch basin symbol	ELEVATION	ELEVATION	(235.750)	---		
Catch pit symbol	CATCH PIT	Catch pit symbol	TREE	TREE	---	---		
Junction symbol	JUNCTIONS	Junction symbol	SIDEWALK RAMP	SIDEWALK RAMP	---	---		
Culvert symbol	CULVERT	Culvert symbol	CONCRETE SIDEWALK	CONCRETE SIDEWALK	---	---		
Gas symbol	GAS	Gas symbol	FENCE	FENCE	---	---		

LOCATION APPROVED UNDERGROUND STRUCTURES

SUPV. U/G STRUCTURES COMMITTEE DATE _____

NOTE:
LOCATION OF UNDERGROUND STRUCTURES AS SHOWN ARE BASED ON THE BEST INFORMATION AVAILABLE. BUT NO GUARANTEE IS GIVEN THAT ALL EXISTING UTILITIES ARE SHOWN OR THAT THE GIVEN LOCATIONS ARE EXACT. CONFIRMATION OF EXISTENCE AND EXACT LOCATION OF ALL SERVICES MUST BE OBTAINED FROM THE INDIVIDUAL UTILITIES BEFORE PROCEEDING WITH CONSTRUCTION.

B.M. 23 - N.W. COR. JOHN BREBUF & RENFEW ST. ELEV. T.B.L. IN E. CONC. FOUNDATION OF NO.1707 ST. JOHN BREBUF SCHOOL. 1.5m N. & 0.2m BELOW BRICK OF S.E. COR. OF SCHOOL. ELEVATION: 233.864

DESIGNED BY	JT	CHECKED BY	RC/KWR
DRAWN BY	JT	APPROVED BY	
HOR. SCALE:	1:250	ORIGINAL SIGNED BY:	
VERTICAL:	1:10	DATE	04/09/2019

ENGINEER'S SEAL
PROVINCE OF MANITOBA
R. T. CUNNINGHAM
Member 24711
REGISTERED PROFESSIONAL ENGINEER

THE CITY OF WINNIPEG
PUBLIC WORKS DEPARTMENT
ENGINEERING DIVISION

2019 REGIONAL STREET RENEWAL PROGRAM

CORYDON AVENUE WESTBOUND - LANARK STREET TO CORDOVA STREET
CONCRETE PAVEMENT RECONSTRUCTION
STATION 0+310 TO STATION 0+440

CITY DRAWING NUMBER P-3507-04
SHEET 04 OF 08