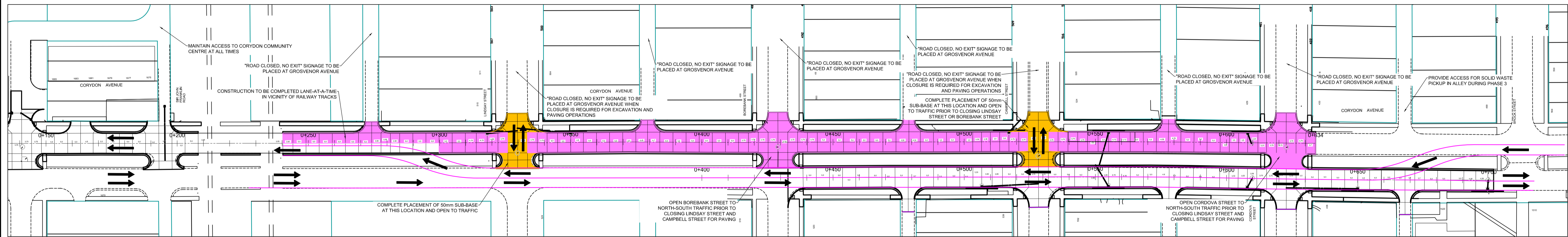
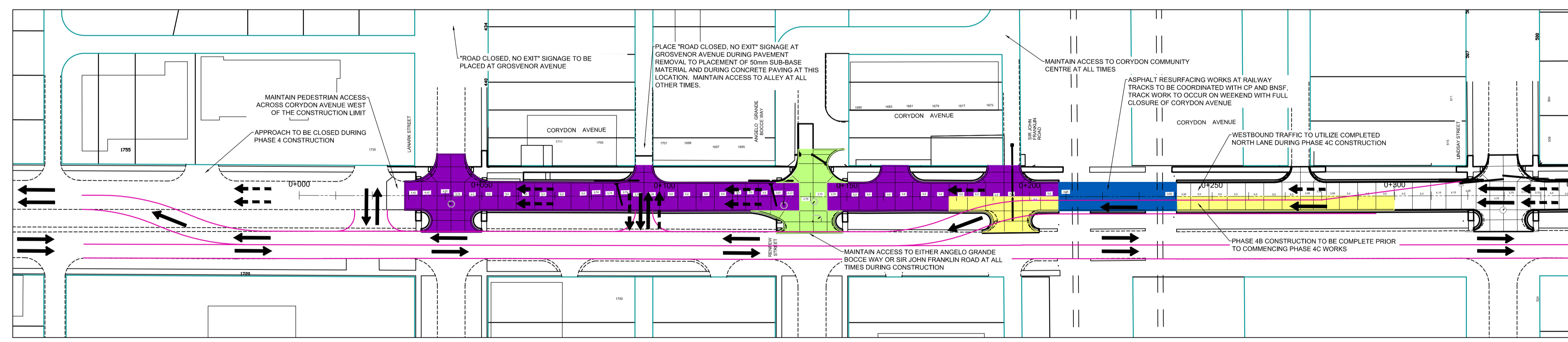


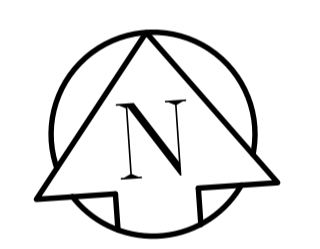
█ PHASE 2 CONSTRUCTION LIMITS
 █ PHASE 2 CONSTRUCTION LIMITS
PHASE 2
 ← PHASE 2 CONSTRUCTION TRAFFIC FLOW



█ PHASE 3 CONSTRUCTION LIMITS
█ PHASE 3 CONSTRUCTION LIMITS
PHASE 3
 ← PHASE 3 CONSTRUCTION TRAFFIC FLOW



█ PHASE 4A CONSTRUCTION LIMITS
█ PHASE 4B CONSTRUCTION LIMITS
PHASE 4
 ← PHASE 4A & 4B CONSTRUCTION TRAFFIC FLOW
█ PHASE 4C CONSTRUCTION LIMITS
█ PHASE 4D CONSTRUCTION LIMITS
 ← - - PHASE 4C CONSTRUCTION TRAFFIC FLOW



- NOTES**
- CONSTRUCTION STAGING PLAN DENOTES CONSTRUCTION OF CONCRETE PAVEMENT (ASPHALT PAVEMENT AT RAILWAY TRACKS). CONTRACTOR IS PERMITTED TO COMPLETE PAVEMENT REMOVAL, EXCAVATION, GEOTEXTILE PLACEMENT AND SUB-BASE AND BASE COURSE PLACEMENT IN ONE CONTINUOUS OPERATION FOR EACH OF PHASES 2, 3 AND 4 PROVIDED ACCESS IS MAINTAINED AS PER THE DRAWINGS AND TENDER DOCUMENT.
 - MAINTAIN PEDESTRIAN ACCESS AT ANGELO GRANDE BOCCO WAY/SIR JOHN FRANKLIN ROAD, LINDSAY STREET, CAMPBELL STREET AND THE SIGNALIZED CORRIDOR AT BROCK STREET AT ALL TIMES UNTIL PAVING OPERATIONS DO NOT PERMIT SAFE ACCESS.

ENGINEERS GEOSCIENTISTS MANITOBA
 Certificate of Authorization
 AECOM Canada Ltd.
 No. 4671 Date: _____

PRELIMINARY
NOT FOR CONSTRUCTION

METRIC
 WHOLE NUMBERS INDICATE MILLIMETRES
 DECIMALIZED NUMBERS INDICATE METRES

150 mm W.M.	WATERMAIN	150 mm W.M.	HYDRO	—X—	PROFILE	LOCATION APPROVED	B.M. ELEV.		ENGINEER'S SEAL 	THE CITY OF WINNIPEG PUBLIC WORKS DEPARTMENT ENGINEERING DIVISION	2019 REGIONAL STREET RENEWAL PROGRAM CITY DRAWING NUMBER P-3507-08 SHEET 08 OF 08
300mm L.D.S.	VALVE	300mm L.D.S.	M.T.S.	—□—	UNDERGROUND STRUCTURES		DESIGNED BY: RC CHECKED BY: BC/KWR DRAWN BY: JT APPROVED BY: HOR. SCALE: 1:500 VERTICAL: RELEASED FOR CONSTRUCTION BY: CONSULTANT DRAWING NO. CT-08				
250mm W.W.S.	LAND DRAINAGE SEWER	250mm W.W.S.	CONCRETE	—○—	NORTH GUTTER	SUPV. U/G STRUCTURES COMMITTEE	0	ISSUED FOR TENDER	04/24/2019	JT	CORYDON AVENUE CONCRETE PAVEMENT RECONSTRUCTION CONSTRUCTION STAGING/TRAFFIC MANAGEMENT PHASE 2, 3 AND 4
300mm L.D.S.	WASTEWATER SEWER	300mm L.D.S.	ASPHALT	—◇—	SOUTH GUTTER	DATE	A	ISSUED FOR REVIEW	04/09/2019	JT	
250mm W.W.S.	MANHOLE	250mm W.W.S.	PROPERTY LINE	—◇—	N/W PROPERTY LINE	NOTE:					
300mm L.D.S.	CATCH BASIN	300mm L.D.S.	SURVEY BAR	—○—	S/E PROPERTY LINE	LOCATION OF UNDERGROUND STRUCTURES AS SHOWN ARE BASED ON THE BEST INFORMATION AVAILABLE. BUT NO GUARANTEE IS GIVEN THAT ALL EXISTING UTILITIES ARE SHOWN OR THAT THE GIVEN LOCATIONS ARE EXACT. CONFIRMATION OF EXISTENCE AND EXACT LOCATION OF ALL SERVICES MUST BE OBTAINED FROM THE INDIVIDUAL UTILITIES BEFORE PROCEEDING WITH CONSTRUCTION.					
300mm L.D.S.	JUNCTIONS	300mm L.D.S.	ELEVATION	—○—							
300mm L.D.S.	CULVERT	300mm L.D.S.	TREE	—○—							
300mm L.D.S.	GAS	300mm L.D.S.	SIDEWALK RAMP	—○—							
300mm L.D.S.		300mm L.D.S.	CONCRETE SIDEWALK	—○—							
300mm L.D.S.		300mm L.D.S.	FENCE	—○—							
EXISTING	LEGEND - PLAN	PROPOSED	EXISTING	LEGEND - PLAN	PROPOSED	EXISTING	LEGEND - PROFILE	PROPOSED			